

NEWSLETTER



WWW.TRANSLANDLLC.COM | WWW.SATLOC.COM | WWW.CPNOZZLES.COM

TOP NEWS INSIDE :

- Transland Weldless Booms
- Satloc Falcon Update 1.12
- Satloc AgLaser
- Did You Know?
- CP Nozzles Helicopter Use

TRANSLAND
1206 HATTON RD.
WICHITA FALLS, TX 76302

NEWLY PATENTED WELDLESS BOOMS.

We're proud to announce that Transland's **Weldless** stainless steel spray boom design is now officially **patented**, reinforcing our commitment to smarter engineering and longer-lasting ag aviation solutions.

Unlike traditional booms that rely on welded-on nozzle couplings, Transland's **Weldless Boom Technology** forms each nozzle coupling directly from the stainless-steel boom itself. This patented

process creates a single, unitary structure, eliminating welds that can crack, fatigue, or fail over time.

The result is a boom that's stronger, cleaner, and more durable, with improved resistance to stress, pressure, and long-term wear. With no added fittings and no welded outlets, **operators benefit** from increased reliability, extended service life, and reduced maintenance concerns in demanding spray environments.

Now **standard** on all Transland stainless steel booms, this patented weldless design is another way we're delivering proven innovation that works as hard as you do, flight after flight.

Explore all Transland stainless steel boom options at www.Translandllc.com/booms



PRECISION ALTITUDE PERFECTED



REAL-TIME HEIGHT MEASUREMENTS EXACTLY WHERE PILOTS NEED IT

Designed specifically for agricultural aviation, the Satloc AgLaser integrates seamlessly with Satloc Falcon and Bantam 2 systems, providing reliable altitude data without adding extra screens or cockpit clutter. Height information can be viewed live on the cockpit screen or lightbar and optionally logged for mapping and post-flight review.

With an operating range of up to **900 ft (274 m)**, the AgLaser supports both precise spray height control and safe ferry-height monitoring. Its solid-state,

eye-safe laser delivers **accurate readings** over crops, water, and ground, helping pilots maintain consistent application performance in changing conditions.

Built tough for demanding environments, the AgLaser features a rugged, lightweight housing with an IP67 rating, making it resistant to dust, moisture, and **pressure washing**.

The Satloc AgLaser adds another layer of confidence to every pass, giving pilots the height awareness they need to apply with accuracy and efficiency. www.Satloc.com/Ag-Laser



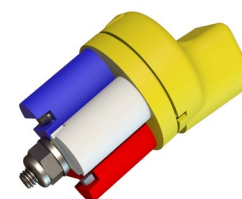
CP-11TT NOT JUST FOR FIXED WING AIRCRAFT

When it comes to **helicopter aerial applications**, precision, flexibility, and reliability are critical. The CP Nozzles **CP-11TT** Poly Aerial Triple Tip Nozzle, paired with 80-degree spray tips, delivers a proven solution that meets the demanding needs of helicopter operators while maintaining the versatility required across ag aviation operations.

The CP-11TT's triple-tip design allows operators to **fine-tune spray patterns** for optimal coverage and control, an essential advantage in helicopter applications where variable speeds, altitudes, and tight treatment areas are common. With **80-degree** tips installed, pilots can achieve a more uniform spray pattern.

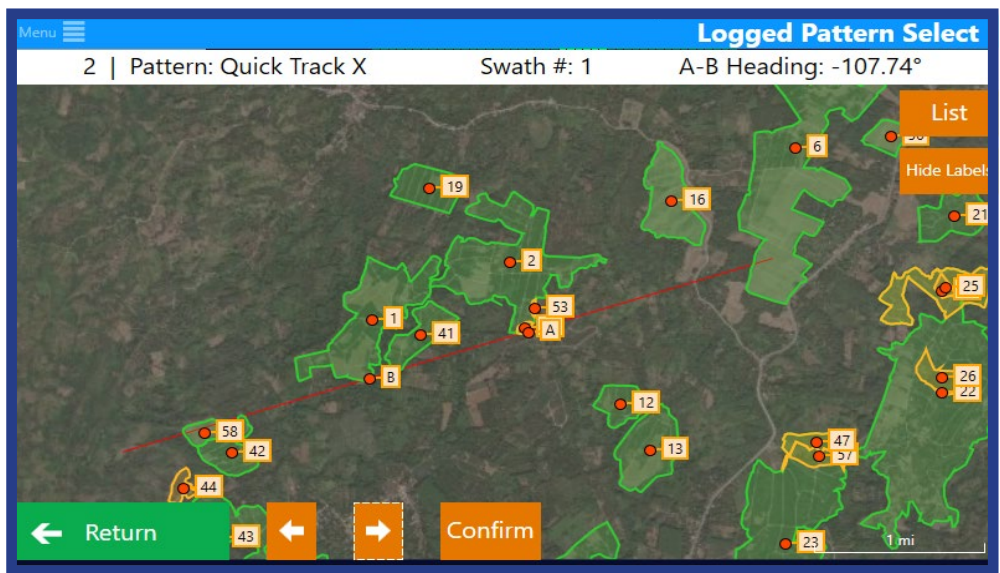
One of the key benefits of the CP-11TT for helicopter use is its adaptability. Whether applying fertilizers, herbicides, insecticides, or fungicides, the nozzle can be configured to match specific **flow rates and droplet sizes**, supporting both efficacy and environmental stewardship. This flexibility makes it an excellent choice for operators who work across diverse application types and conditions.

To learn more about the CP-11TT Poly Aerial Triple Tip Nozzle and available tip options, visit cpnozzles.com.



CP 11-TT
The Original
Triple Tip Nozzle

MORE CONTROL, MORE CLARITY, BETTER PERFORMANCE



SATLOC FALCON SOFTWARE UPDATE 1.12

Built from real pilot feedback, the [Satloc Falcon](#) 1.12 update introduces a wide range of enhancements that make the system even more pilot-driven and easier to use. Every improvement is focused on refining the in-cockpit experience, improving workflow efficiency, situational awareness, and overall system performance—while adding powerful new pattern options, expanded hotkeys, and visual upgrades that give operators more control when it matters most.



IMPROVED DATA & APPLICATION FEEDBACK

SMARTER MAPPING & VISUAL ENHANCEMENTS

- **New Flex and Multi Back-to-Back** patterns expand application flexibility.
- **Obstacle mapping**, including imported FAA obstacle data, improves safety and awareness.
- **Polygon upgrades** now allow color changes, searchable selection, column numbering, and on-screen area display.
- **Visual map menus** make it easier to select Go-To Polygons and Logged Patterns.
- **Marks now display directional arrows**, clearly showing heading.
- **Moving Map improvements** now display guidance destination names and polygon areas.
- Optional **on-screen Virtual Lightbar** provides additional visual guidance aid.
- **Waypoints** can now be set to always show or hide, based on operator preference.

Ready to Update?

Falcon 1.12 delivers meaningful improvements that enhance usability, efficiency, and cockpit confidence. We encourage all operators to update and take advantage of these new features.

ENHANCED AUTOMATION & HOTKEYS

Falcon 1.12 adds multiple new hotkeys to speed up in-flight and ground operations.

- Enable/disable **Auto Dispersal**
- Calculate **Liquid Cal Factor correction** and update automatically
- Import/export **Jobs and Dry Profiles**
- Toggle **Auto Zoom** with adjustable min/max levels
- Show or hide **polygon labels**
- View **unapplied swaths** at a glance

These shortcuts help reduce workload and keep operators focused on the task at hand.



- Added **swath volume and weight counters**, plus a load area display counter, for better tracking.
- Updated L8 data now includes **IF2/3 boom pressure, flow standard deviation, and swath heading**.
- Polygon Selection and Moving Map now both show **polygon area**, improving planning accuracy.

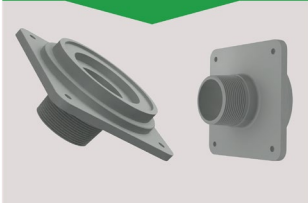
SYSTEM REFINEMENTS & RELIABILITY

- **AB Line Up** now functions correctly regardless of screen orientation.
- Ability to ignore partner **ADS-B callsigns** reduces unwanted traffic clutter.
- Option to **keep or reset** trim when appropriate.
- **Imported jobs can now be renamed** automatically if a name conflict exists.
- **Fixed an issue** where the encoder knob could fail after navigating certain menus.
- Faster encoder knob dimming, **cleaner menus**, and overall visual improvements.
- Significant **performance enhancements** for smoother operation.
- Falcon software now **opens automatically** on system startup, saving time every day.

DID YOU KNOW ?

Did You Know? Transland offers a range of specialized products and configurations that aren't always widely known, but can make a big difference in performance, durability, and ease of operation. Alongside these lesser-known solutions, we also continue to refine existing products based on customer feedback and real-world use. Below are a few product highlights and recent updates worth knowing about.

2" NPT Loader Valve Cap



2" NPT LOADER VALVE CAP

The 42300 Aluminum cap has been updated with a 2" NPT thread (previously 3") to better accommodate customers **connecting a 2" DryBrake**. This change eliminates the need for a custom cap, customers can now simply order the standard 42300. For those using a 3" load valve, a special cap is still available upon request to allow connection to a 2" DryBrake.

Loader Valve Adapter



DELTRIN LOADER VALVE ADAPTER

Transland's Delrin loader valve adapters help protect loader valve threading, reduce wear, and improve efficiency during frequent loading operations. Designed to **support dry-break connections**, these lightweight, durable adapters offer a corrosion-resistant, cost-effective solution for agricultural aerial applications. Available options include 44331 (**2" NPT female to 2" NPT male adapter**) and 44330 (**3" NPT female to 2" NPT male adapter**), providing flexible connection solutions while extending equipment life in the field.

Hopper Fill Adaptor



HOPPER FILL ADAPTOR

The 50440 2" Hopper Fill Adaptor is now available for **Air Tractor 402 and 502** aircraft and is designed for use with a **Transland Dump Plate**. This adaptor provides a proper 2" fill connection while maintaining compatibility with dump plate configurations commonly used in aerial firefighting operations.

When ordering, customers should specify the aircraft model to ensure proper fit and compatibility with the dump plate setup.

CPA310V Viton Diaphragm



VITON DIAPHRAGM MATERIAL CHANGE

The CPA310V diaphragm, used in CP-04 Poly and CP-02 SS check valves, has been upgraded from the previous black material to a more durable Viton diaphragm. This change addresses tearing issues and improves reliability in demanding applications. The new diaphragm features a **Kevlar fabric** weave for added strength and longer service life.

To identify the updated version, look for yellow striping on the diaphragm—this marking is not present on the previous design.