

NEWSLETTER

WWW.TRANSLANDLLC.COM | WWW.SATLOC.COM | WWW.CPNOZZLES.COM



2025
FALL
ISSUE

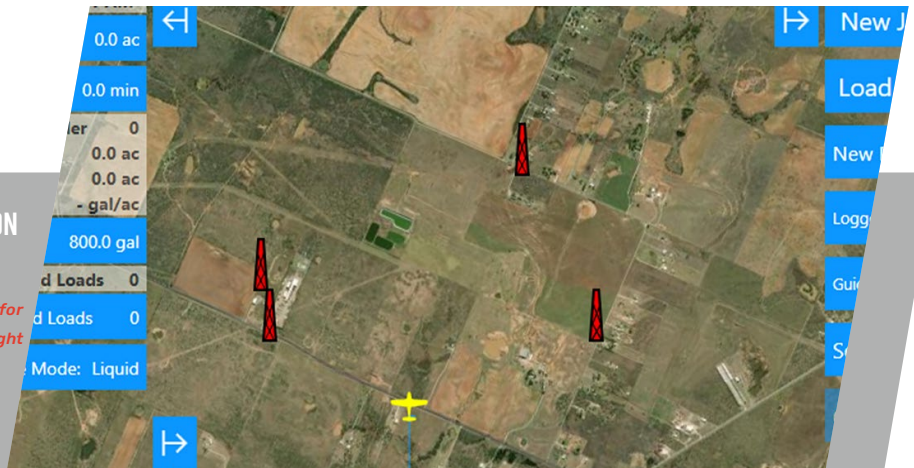
Content

- Obstacle Awareness in Satloc Falcon
- Know Your Nozzles
- Employee Spotlight
- Dry Dispersal Tips
- Bantam 2 KML File Integration

TRANSLAND
1206 HATTON RD.
WICHITA FALLS, TX 76302

OBSTACLES DISPLAYED ON FALCON MAP SCREEN

Note: ADS-B In and Obstacle Awareness are advisory tools for situational awareness. They do not replace pilot judgement, preflight planning, ATC guidance, or see-and-avoid procedures.



**Obstacle Awareness
Now Available in
Satloc Falcon**

What's New in Falcon Version 1.12.2

Falcon now offers **obstacle awareness**. From **Mapping>Obstacles**, turn on **Obstacle Awareness Active** to see FAA Digital Obstacle File (DOF) points on the moving map and receive proximity alerts. No internet connection? Load the DOF with an **offline import**. You can also add your own **Point** and **Line** obstacles; choose a type (tower, wire, turbine, etc.) for reference. What's even better is that

pilots can touch a hotkey for obstacles and the obstacle is **instantly added**.

Alerts are color-coded—yellow, orange, red—and all point obstacles render with the tower symbol for easy recognition. **Adjustable settings** include Height (AMSL) buffer, Minimum Height (AGL) threshold, Display Radius (map draw distance), and Forward Warning Radius (Lightbar). **Choose the Lightbar circle pattern:** Standard (chasing) or No Chasing (dot). Visit www.satloc.com/falcon-and-falcon-pro/ for more information about Obstacle in Satloc Falcon.

Dry Dispersal Tips

Field Proven Advice

Simple, field-proven setup steps are noticeable in the field – uniform patterns, consistent rates, efficient product dispersal. Here's a condensed, field-tested checklist drawn from Dr. Dennis Gardisser's guidance and Transland setup experience, so you can lock in a clean pattern before the season (and each job).

Tip One: *The 25 lb/ac rule of thumb*

Using a wide-intake spreader on a 38" or 41" gate? For every +25 lb/ac, reduce swath width by ~3 ft. For -25 lb/ac, increase ~3 ft. With 25" gate boxes, many operators find the adjustment is closer to ~1½ "gate steps" per 25 lb/ac change (treat this as a starting point, then confirm with testing).

This is a practical baseline—not a substitute for formal pattern testing.

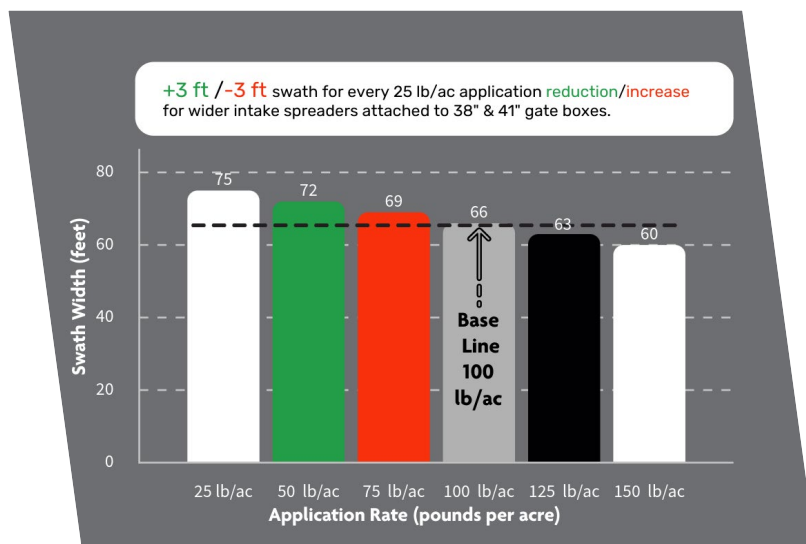
Tip Two: *Set the spreader angle to match the wing*

Aim for the spreader's bottom surface to be 0–4° higher at the rear than the wing's angle of attack—often ~1–3° less than the wing. In many installs, that lands you within ~2° of the wing's bottom skin. This alignment supports smooth material flow, minimizes drag, and lowers the chance of product striking the tailwheel or piling on the spreader.

Product assist: Transland Tail Deflector Kit to shield the tail from granular products.

Tip Three: *Keep hopper pressure positive*

Unpressurized hoppers can wander ±20 lb/ac over a load—e.g., a 100 lb/ac target starts near 120 and ends near 80 as the hopper empties. Positive hopper pressure stabilizes delivery across the load.



Do:

- Use ram-air scoops and a sealed hopper lid; keep lid seals in good repair.
- Face the hopper vent forward to build pressure.

Product assist: Transland hopper vent and scoop options.

Pre-application setup is **not a substitute for formal pattern testing**. Transland highly encourages operators to attend pattern-testing clinics.

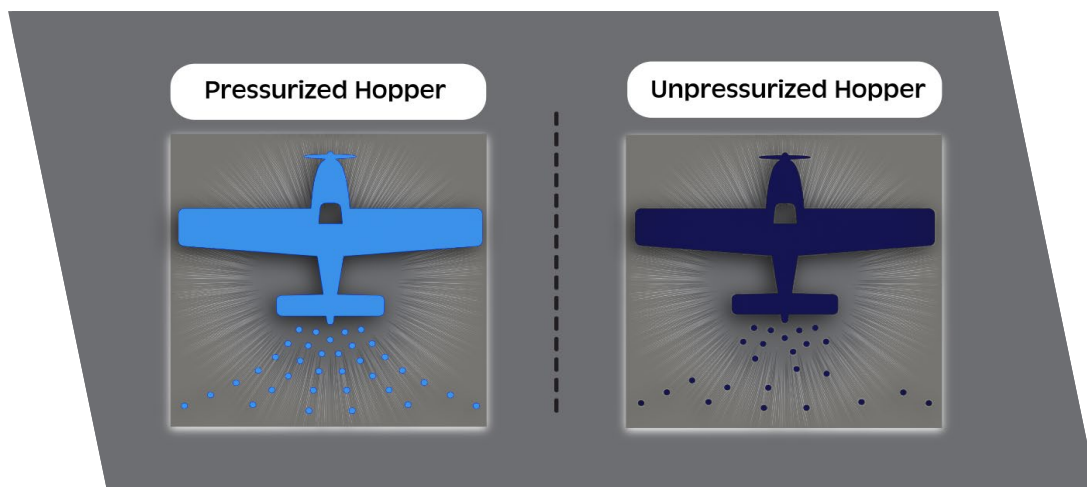
Visit www.Translandllc.com/referenceguides/ for more dry dispersal tips.

References:

- Gardisser, D. R., Walker, J. T., & Kuhlman, D. K. (1993). Agricultural Aircraft Spreader Setup (MP-351).

Cooperative Extension Service, University of Arkansas.

- Gardisser, D. (2024, November 19). Cover Crop Seeding & Spreader Tips (Transland Breakfast Seminar handout, pp. 1–2). WRK of Arkansas, LLC.
- Transland. (2023, November). Transland SwathMaster® & Spreaders Information (Rev. C). Transland LLC.



Visualization of what happens to dispersal material when a hopper is pressurized and unpressurized. Correlates with Tip Three.

Know Your Nozzles:

Comparison of CP Standard Nozzles

Information overload happens.

Below is a breakdown of the CP Standard Nozzles to help you pick the right setup for your job.

Remember: All parts are replaceable.



KNOW YOUR NOZZLE



CP STANDARD NOZZLES



Model	Body	Selector	Deflector	Shut Off	Key notes	Airspeed Guide
CP-01-03	Stainless steel	Stainless, 4-orifice (.062, .078, .125, .172)	Stainless, 3-way (30°, 55°, 90°)	Yes	Longterm durability; handles abrasive/corrosive materials; 'can take a beating'.	under 120 mph
CP-03	Polypropylene	Poly, 4-orifice (.062, .078, .125, .172)	Poly, 3-way (30°, 55°, 90°)	Yes	Lightweight & affordable; good for mild/not highly corrosive materials; simple adjustments.	under 120 mph
CP-03-SD	Polypropylene	Poly, 4-orifice (.062, .078, .125, .172)	Stainless, 3-way (30°, 55°, 90°)	Yes	Use if deflector takes the most abuse in your operations; pattern depends on deflector shape; use if uneven swaths often trace back to worn deflectors; middle ground nozzle without full stainless weight/cost.	under 120 mph
CP-03-SDS	Polypropylene	Stainless, 4-orifice(.062, .078, .125, .172)	Stainless, 3-way (30°, 55°, 90°)	Yes	Upgrades only high wear parts but keeps the poly body for reduced cost and weight; ideal for operators who've experienced wear at both the selector and deflector; resists coarse/corrosive materials.	under 120 mph
CP-03-SS	Polypropylene	Stainless, 4-orifice (.062, .078, .125, .172)	Poly, 3-way (30°, 55°, 90°)	Yes	Selector upgrade adds durability; stainless orifices improve rate and repeatable flow; using high pressure and need the selector to be strong.	under 120 mph
CP-03-05	Polypropylene	Poly, 5-orifice (.062, .078, .093, .125, .172)	Poly, 3-way ((30°, 55°, 90°	No	Use if you want more rate options and don't need shutoff at selector; includes .093 orifice not found in 4-hole models	under 120 mph

Bantam 2

The Easy Upgrade

Upgrade your existing Bantam system effortlessly, keep your original installation and swap just three parts:

- **Upgraded Bantam 2 CPU**
- **New L8 or H8 Lightbar.**
- **Lightbar Cabeling**

This can be purchased all bundled in one easy kit.

The Bantam 2 pairs seamlessly with the compact H8 Lightbar, creating the perfect solution for helicopters and other aircraft where space matters.



Bantam 2 with H8 in Helicopter

Enjoy Enhanced GPS Accuracy, WiFi Connectivity, Increased Memory, and Satloc Cloud Integration. Visit www.Satloc.com for more information about Bantam 2.

Employee Spotlight

Meet Michelle Parrent, Senior Design Specialist



When Transland acquired CP Products, Michelle Parrent made a bold move—leaving Arizona for Wichita Falls, Texas, without family or friends. That leap set the stage for a standout career built on grit, curiosity, and deep product expertise.

Michelle began in production, managing the many moving parts of CP nozzles. She then transitioned to sales and later to marketing, gaining a rare end-to-end perspective on how CP products are built, specified, and used in the field. Today, as a Senior Design Specialist, she is one of the industry's most trusted voices on CP Nozzles. With 20+ years of hands-on experience, her knowledge of CP Nozzles rivals—and

often exceeds—what you'll find anywhere in ag aviation.

After transitioning out of managing CP Products, Michelle dove headfirst into learning the broader Transland product lines—and then Satloc. That curiosity is her hallmark. She doesn't just learn new things; she learns them deeply. It's that passion for understanding that sets her apart.

Among Michelle's recent accomplishments, she is a key contributor to the new CP app, which uniquely brings together CP nozzle data with USDA data—an integration that hadn't been achieved before. The result: practical decision tools that help applicators choose confidently and work more efficiently.

Customers and colleagues alike know Michelle for more than her technical chops. Her smile lights up a room, her quick wit puts people at ease, and she's the first to jump in and help. She also holds a business degree with an emphasis in marketing and advertising, the result of determined late nights and steady dedication.

Wichita Falls has become Michelle's home in the best possible way. Michelle met the love of her life here, and together they're raising a beautiful daughter. They share a love of cooking and making memories as a family. With both sides of the family now in Wichita Falls, holidays and everyday get-togethers are a reminder of what matters most to Michelle: **family, community, and caring for the people she loves.**