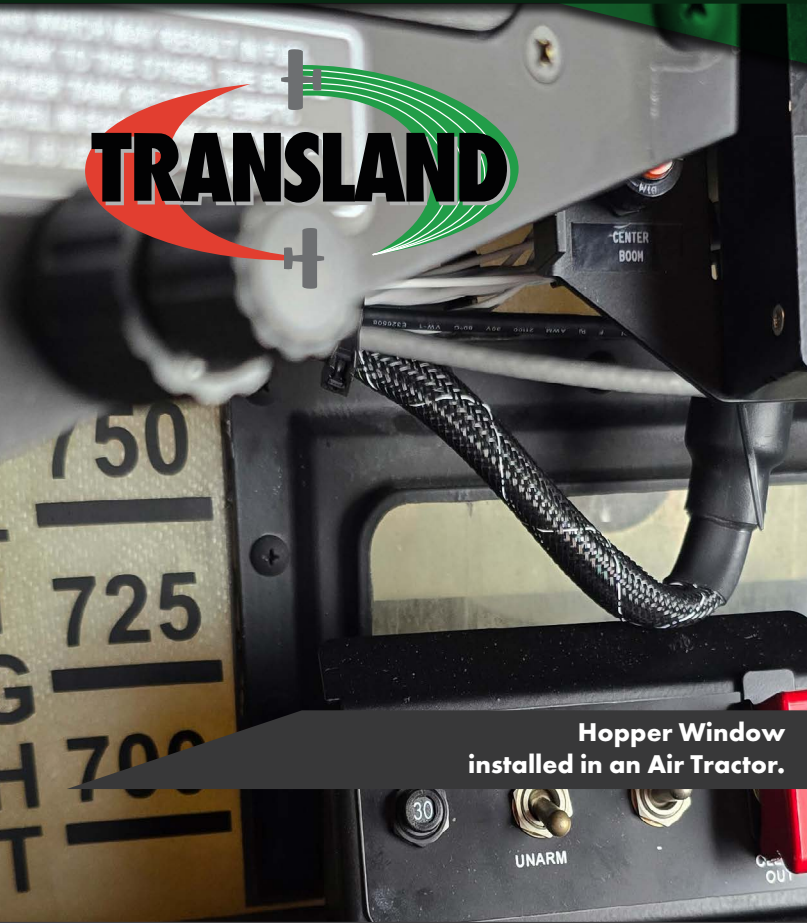


Transland Miscellaneous Parts Guide



● 1.1
Pg. 1

Adapters



● 1.3
Pg. 4

Dust Caps



● 1.5
Pg. 6

Fittings



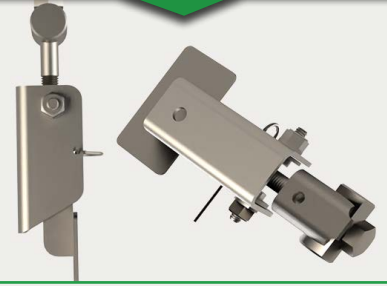
● 1.7
Pg. 12

Micrometers & Spray Control Handle



● 1.2
Pg. 3

Clamps & Latches



● 1.4
Pg. 5

Gate Box Q.D. Adapter



● 1.6
Pg. 9

Hopper Accessories



● 1.8
Pg. 14

Tail Deflector Kits



1.1 ADAPTERS

Quick Disconnect (Q.D.) adapters provide fast, tool-free connections for pumps, valves, booms, and gate boxes. General adapters speed up transitions, while swivel-style options allow flexible positioning—ideal for tight spaces between pumps and plumbing.

Q.D. Adapters (General Replacement Use)

These fittings are commonly used as replacements for quick disconnect (Q.D.) adapters on pumps, valves, booms and gate boxes. Whether you're replacing a worn part or stocking spares, these aluminum adapters help maintain system integrity with minimal downtime.

Male QD to Female Threaded



PN	Description	Material
85050	1" Male Q.D. to Female NPT	Aluminum
85051	1.25" Male Q.D. to Female NPT	Aluminum
85052	1.5" Male Q.D. to Female NPT	Aluminum
85053	2" Male Q.D. to Female NPT	Aluminum
85054	2.5" Male Q.D. to Female NPT	Aluminum

Male QD to Male Threaded



PN	Description	Material
85057	1" Male Q.D. to Male NPT	Aluminum
85058	1.25" Male Q.D. to Male NPT	Aluminum
85059	1.5" Male Q.D. to Male NPT	Aluminum
85060	2" Male Q.D. to Male NPT	Aluminum
85061	2.5" Male Q.D. to Male NPT	Aluminum

BENEFITS AT A GLANCE

01 Fits standard pump, valve, and boom setups

Quick-connect convenience **02**

03 Inexpensive replacement

Helps maintain system integrity with minimal downtime **04**

Swivel-Style Q.D. Adapters

Designed for installations between the pump and gate box, these adapters allow for rotational positioning. Ideal when angled or offset configurations are needed to accommodate space or alignment requirements. These are used primarily on pumps and side plumbing on gate boxes.

Swivel Q.D. to Hose Barb (Angled):



PN	Description	Degree of Angle	Material
20761	2" Female Q.D. to Hose Barb Fitting	75°	Aluminum
50761	2" Female Q.D. to Hose Barb Fitting	75°	Stainless Steel
56569	2.5" Female Q.D. to Hose Barb Fitting	90°	Stainless Steel
56599	3" Female Q.D. to Hose Barb Fitting	90°	Stainless Steel

BENEFITS AT A GLANCE

01 Great for tight spaces or offset plumbing

Rotates for alignment flexibility **02**

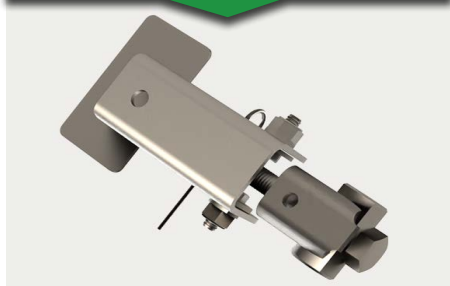
03 Stainless steel strength

A low-cost solution for complex routing challenges **04**

1.2 CLAMPS & LATCHES

These clamp and latch assemblies are critical for securing equipment to the aircraft's gate box. They help maintain alignment and reduce the risk of vibration-related movement during flight, supporting smoother operation and safer application.

Stainless Steel Latch & Hook Assembly



PN	Description	Note
50217	Stainless Steel Latch Assembly	Quick-Disconnect (QD) style latch for attaching a SwathMaster or spreader to the gate box. Constructed from stainless steel for corrosion resistance in agricultural environments.
54102	Stainless Steel Latch & Hook Assembly	This latch is identical to Latch Assembly PN 50217, except that it features an added hook. Quick-Disconnect (QD) style latch for attaching a SwathMaster or spreader to any 25" gate box. Constructed from stainless steel for corrosion resistance in agricultural environments.
85154	Knu-Vise Clamp	A small, vertical-handle toggle clamp designed for hold-down applications. Commonly used when a compact, locking hold is required on equipment or mounting brackets.
85170	De-Sta-Co Clamp	Heavy-duty vertical hold-down clamp, commonly used on fire door and frame assembly. Works with a 38" and 41" gate. Provides a strong grip to hold key components in place during operation.

BENEFITS AT A GLANCE

01 Low-cost hardware that delivers high-value stability

Strong hold, even under stress **02**

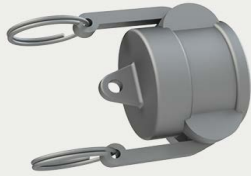
03 Durable Equipment

Keeps your gear where it belongs — locked in and ready **04**

1.3 DUST CAPS

Quick Disconnect (Q.D.) Dust Caps with Gaskets are designed to seal and protect liquid system connections on aerial application aircraft when not in use. These caps help prevent debris, dust, and moisture from entering the system, safeguarding pumps, valves, and booms from contamination.

Q.D. Dust Cap



PN	Description	Material
85319	1" Dust Cap with Gasket	Aluminum
85320	1.25" Dust Cap with Gasket	Aluminum
85321	1.5" Dust Cap with Gasket	Aluminum
85322	2" Dust Cap with Gasket	Aluminum
85323	2.5" Dust Cap with Gasket	Aluminum
85207	3" Dust Cap with Gasket	Aluminum
80067	1" Dust Cap with Gasket	Stainless Steel
56508	1.5" Dust Cap with Gasket	Stainless Steel
56509	2" Dust Cap with Gasket	Stainless Steel
56511	2.5" Dust Cap with Gasket	Stainless Steel
56504	3" Dust Cap with Gasket	Stainless Steel
56501	4" Dust Cap with Gasket	Stainless Steel

BENEFITS AT A GLANCE

01 Available in multiple sizes and materials

Seals system ports when not in use **02**

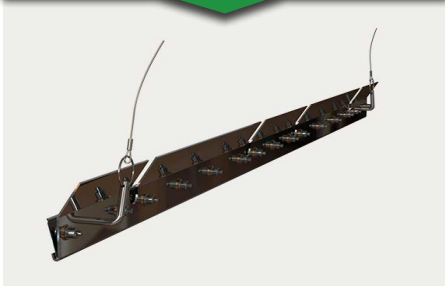
03 Reduces risk of internal corrosion

Inexpensive protection for expensive parts **04**

1.4 GATE BOX Q.D. ADAPTER

If you're switching between wet and dry application systems throughout the season, a Gate Box Q.D. Adapter can save you serious time. These quick-release plates eliminate the need for repeated disassembly, letting you swap equipment faster and get back in the air.

Gate Box Q.D. Adapter



PN	Fits Gate Box Type
23499	25" Gate Boxes for Ag Cat
23504	41" Gate Boxes for Thrush & Dromader
23505	38" Gate Boxes for Air Tractor & Ag Cat (old style)
23507	All 25" Gate Boxes for Air Tractor
25505	38" Gate Boxes for Air Tractor & Ag Cat (new style with studs)

BENEFITS AT A GLANCE

01 Speeds up equipment swaps between wet and dry systems

Reduces downtime **02**

03 Lessens wear on equipment

Quick-release design for easy spreader attachment **04**

Quick Disconnect Gate Opening Setup

- To set the gate, measure from the outside edge of the QD plate to the inside edge of the door gasket. *(Do not measure from the gate box to the inside edge of the door gasket.)*
- Once the QD plate is attached to the gate, slide the spreader in place and insert pins. Latch your latches on the side, and you're ready to go.

1.5 FITTINGS

Quick Disconnect (Q.D.) fittings help streamline hose, pump, valve, and boom connections across your liquid system. Designed for fast assembly and reliable sealing, these parts support efficient setup, easy maintenance, and reduced downtime. From flange fittings to gaskets, every component in this section plays a role in keeping your application system tight, secure, and field-ready.

Q.D. Fittings

Used to connect hoses to pumps, valves, or booms, these adapters provide flexibility in configuring boom setups.

Female QD to Female Threaded



PN	Description	Material
85255	1" Female Q.D. x 1" Female NPT	Aluminum
85256	1.25" Female Q.D. x 1.25" Female NPT	Aluminum
85257	1.5" Female Q.D. x 1.5" Female NPT	Aluminum
85258	2" Female Q.D. x 2" Female NPT	Aluminum
85259	2.5" Female Q.D. x 2.5" Female NPT	Aluminum

Female QD to Male Threaded



PN	Description	Material
87600	3/4" Female Q.D. to Male NPT	Aluminum
85286	1" Female Q.D. to Male NPT	Aluminum
85287	1.25" Female Q.D. to Male NPT	Aluminum
85289	2" Female Q.D. to Male NPT	Aluminum
85290	2.5" Female Q.D. to Male NPT	Aluminum

Female QD to Hose Barb

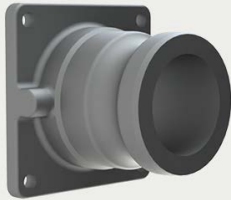


PN	Description	Material
85280	1" Female Q.D. to Hose Coupling	Aluminum
85281	1.25" Female Q.D. to Hose Coupling	Aluminum
85282	1.5" Female Q.D. to Hose Coupling	Aluminum
85283	2" Female Q.D. to Hose Coupling	Aluminum
85284	2.5" Female Q.D. to Hose Coupling	Aluminum
85034	3" Female Q.D. to Hose Coupling	Aluminum
55282	1.5" Female Q.D. to Hose Coupling	Stainless Steel
55283	2" Female Q.D. to Hose Coupling	Stainless Steel
55284	2.5" Female Q.D. to Hose Coupling	Stainless Steel
55285	3" Female Q.D. to Hose Coupling	Stainless Steel
50903	4" Female Q.D. to Hose Coupling	Stainless Steel

Q.D. Flange Fittings

Typically installed between the pump and gate box, these adapters simplify the transition from liquid to dry systems. The Q.D. feature allows for faster changeouts without unbolting components. *Primarily used on gate boxes, but also compatible with some valve configurations.*

Male Q.D. Flange Fitting



PN	Description	Material
42618	1.5" Male Q.D. Flange Fitting	Aluminum
42619	2" Male Q.D. Flange Fitting	Aluminum
42620	2.5" Male Q.D. Flange Fitting	Aluminum
40909	3" Male Q.D. Flange Fitting	Aluminum
52618	1.5" Male Q.D. Flange Fitting	Stainless Steel
52619	2" Male Q.D. Flange Fitting	Stainless Steel
56620	2.5" Male Q.D. Flange Fitting	Stainless Steel
50909	3" Male Q.D. Flange Fitting	Stainless Steel

Angled Male Q.D. Flange Fitting



PN	Description	Degree of Angle	Material
40317	Angled 2" Male Q.D. Flange Fitting	64°	Aluminum
40271	Angled 2.5" Male Q.D. Flange Fitting	14°	Aluminum
50317	Angled 2" Male Q.D. Flange Fitting	64°	Stainless Steel
50271	Angled 2.5" Male Q.D. Flange Fitting	14°	Stainless Steel

BENEFITS AT A GLANCE

01 Connects quickly to standard aerial ag spray systems

Flexible connection options **02**

03 Low-cost part, high-value uptime

Durable materials for repeated use **04**

Gaskets for Q.D. Fittings

These gaskets provide a secure seal between Q.D. fittings, helping to reduce leaks and maintain system integrity under pressure.



PN	Description
85362	1" Buna-N Gasket
85366	1.25" Buna-N Gasket
85364	1.5" Buna-N Gasket
85363	2" Buna-N Gasket
85365	2.5" Buna-N Gasket
86186	3", .25" Thick Buna-N Gasket (Used with Center Booms & Strainers)
86188	3" Buna-N Gasket
86190	3.31" Buna-N Gasket Thick
86195	4" Buna-N Gasket

BENEFITS AT A GLANCE

01 Maintains consistent system pressure for smooth operation

Leak-resistant seal **02**

03 Quick to replace — no tools required

Inexpensive part — high-value protection **04**

1.6 HOPPER ACCESSORIES

Small parts that make a big difference in flight. This section includes components designed to improve visibility, airflow, fill control, and material stability inside the hopper. Whether you're managing dry or liquid loads, these accessories help support safer, smoother operation from loading to application.

Hopper Baffle for Thrush Aircraft

Reinforce your fiberglass hopper with a part designed to handle the pressure — on the ground and in the air. Transland's stainless steel hopper baffle helps diffuse the force of high-speed fills and reduce shifting of dry or liquid materials in flight.



PN	Description	Aircraft Compatibility
56716	Stainless Steel Hopper Baffle	Thrush 510

BENEFITS AT A GLANCE

01 Helps protect fiberglass hoppers from cracking during loading

Inexpensive hopper protection **02**

03 Supports consistent performance

Reduces in-flight movement of dry and liquid materials **04**

Hopper Demand Vent

Demand Vents help equalize pressure within the hopper as materials are dispensed during flight. When material is released, the internal pressure inside the hopper can decrease, potentially creating a vacuum effect that disrupts the smooth flow of materials. By allowing air to enter the hopper, Demand Vents maintain consistent internal pressure, preventing the formation of a vacuum and allowing materials to flow smoothly and evenly.



Note: Regular maintenance and inspection of Demand Vents are essential to ensure optimal performance. Blockages, wear and tear, or damage to the vents can lead to operational disruptions and safety risks.

PN	Description
22711	4" Aluminum Demand Vent
22702	4" Delrin Demand Vent
22701	4" Stainless Steel Demand Vent
22706	8" Aluminum Demand Vent
22706	8" Delrin Demand Vent

Hopper Overflow Tubes

Hopper Inside and Outside Overflow Tubes work together to manage liquid levels efficiently and protect both the aircraft and applicator from risks related to overfilling.

Hopper Inside Overflow Tube



Hopper Inside Overflow Tube

Located within the hopper, this tube intercepts rising liquid before it reaches the breather or lid — directing overflow away from internal components and reducing the risk of chemical exposure or damage.

PN	Description	Aircraft Compatibility
56717	Hopper Inside Overflow Tube, Stainless Steel	400/500 gal Thrush

Hopper Outside Overflow Tube

Mounted externally, this tube provides a safe discharge path for excess fluid — keeping chemicals off sensitive areas like wiring or fuselage panels. It also gives ground crews a visual cue that the hopper is full.

Hopper Outside Overflow Tube



PN	Description	Aircraft Compatibility
56718	Contains three different tubes for versatility, Stainless Steel	400/500 gallon Thrush

BENEFITS AT A GLANCE

01 Diverts overflow before it reaches sensitive components

Reduces risk of chemical spillage **02**

03 Adds an extra layer of safety

Low-cost components that protect high-cost equipment **04**

Hopper Scoop Vent

Sometimes the smallest part makes the biggest difference. Hopper scoop vents may not look like much, but they play a critical role in maintaining smooth, consistent flow of dry material. By allowing air to enter as product exits, they help your system breathe easier — and work better.



PN	Description	Aircraft Compatibility
28971	Hopper Scoop Vent	Thrush

BENEFITS AT A GLANCE

01 Small, affordable part with a big impact on system performance

Supports consistent flow **02**

03 Reduces risk of clogging

Helps your system work as intended **04**

Hopper Window Kits

Hopper window kits provide pilots with clear visibility of hopper contents, allowing real-time monitoring of material levels and flow conditions during flight.



Kit PN	Description	Frame Size	Aircraft Compatibility
54109	Hopper Window Kit	13" x 6"	Air Tractor
54415	Hopper Window Kit	17" x 6"	Air Tractor
54421	Hopper Window Kit	9" x 9.375"	Weatherly
54486	Hopper Window Kit	Approx. 6"x7" Frame; 4"x5" glass	Ag Cat

BENEFITS AT A GLANCE

01 Supports more accurate application decisions mid-flight

Real-time visibility **02**

03 Budget-friendly upgrade

Helps spot material flow issues before they become problems **04**

1.7 MICROMETERS & SPRAY CONTROL HANDLE

Fine-tune your application with mechanical precision. Micrometer assemblies and spray control handles offer reliable, repeatable ways to adjust gate opening limits on Air Tractor and Thrush aircraft. Whether calibrating for different materials or making in-flight adjustments, these tools help dial in consistent performance — with built-in safeguards for emergency jettison and manual control when needed.

Micrometers

Micrometer assemblies offer a mechanical means for adjusting how far the gate on a hopper can open, which directly affects how much product is released. This screw and stop mechanism permits fine metering of both solids and liquids. Safety equipped to permit opening dump gate fully in emergency, jettisoning load. Comes complete with all mounting hardware.

Air Tractor Models

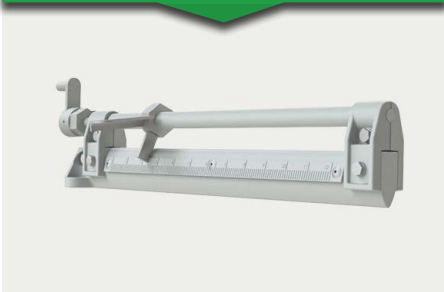
This version uses a micrometer screw mechanism, allowing incremental adjustments to the gate stop position. It's commonly used to help dial in preferred settings during calibration or fieldwork. Once the desired gate opening is found, pilots or loaders can use the screw mechanism to return to that position more easily.

Thrush Aircraft

The Thrush-style micrometer includes a 12-inch graduated scale. With five turns per inch, the mechanism allows operators to track changes more easily over a broader range. The scale is especially useful when working with different gate openings for varied materials.

Reminder: These tools aid with repeatability but do not account for all variables—product type, aircraft speed, and pilot input all affect real-world application.

Micrometer - PN 20875



PN	Description
20875	Micrometer Assembly Air Tractor
20884	Micrometer Assembly Thrush (includes 12" graduated scale, 5 turns per inch)

Micrometer - PN 20884



BENEFITS AT A GLANCE

01 Cost-effective solution for gate adjustment without electronics

Repeatable gate opening settings **02**

03 Fine-tune gate positions

Includes safety override to fully open gate in emergency dumps **04**

Spray Control Handle

This screw-type control handle is designed for use on Air Tractor and Thrush aircraft, allowing the operator to mechanically adjust the gate stop from inside the cockpit.

The control handle lets the pilot restrict how far the gate opens by setting a stop position. This feature can support in-flight changes or fine-tuning based on field conditions. It is especially helpful when digital flow control is unavailable or during backup operation modes.

Caution: Adjustments made with the spray control handle influence flow but should always be evaluated alongside GPS feedback, pilot awareness, and field conditions. A visual check or calibration pass is recommended when settings are changed.



PN	Description	Aircraft Compatibility
21611	Spray Control Handle	Air Tractor and Thrush

BENEFITS AT A GLANCE

01 Mechanical cockpit control of gate

Mechanical cockpit control **02**

03 Simple, low-cost tool

Useful when digital systems are unavailable or as a backup **04**

1.8 TAIL DEFLECTOR KITS

Transland's tail deflectors for Thrush and Air Tractor aircraft are designed to shield your tail—literally! These durable additions help protect your tail spring and steering assembly by deflecting granules, seeds, and other materials from the spreader before they can cause damage. They also help guard against debris kicked up from the landing strip. Think of them as your aircraft's rear-end defense system.



PN	Description	Aircraft Compatibility
22461	Tail Deflector Kit	AT-502
22463	Tail Deflector Kit	AT-602/802
97501	Tail Deflector Kit	Thrush 510

BENEFITS AT A GLANCE

01 Helps reduce wear on tail spring and steering assembly

Shields tail **02** from granules

03 Built for rough runways

Practical investment as a **04** defense for critical components

Transland Miscellaneous Parts Guide



Transland
1206 Hatton Rd.
Wichita Falls, TX 76302

www.TranslandLLC.com