

Transland Booms Guide

Transland Booms and Center Booms

Strength and Durability make a Transland Boom a cut above the rest.



Transland Boom Shut-Off Kits

Run sensitive jobs with confidence.



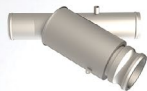
Transland Boom Clamps & Hangers

Clamp it and support it with our Clamps & Hangers.

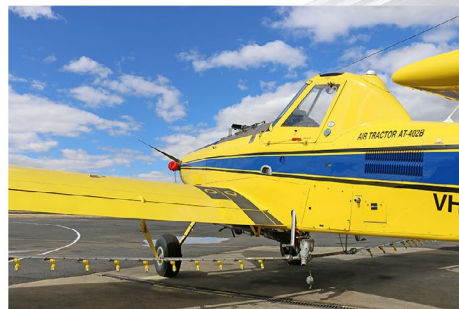


Transland Strainers

Excellent filtration keeps the spray system running smoothly.



Miscellaneous Parts



● 1.1
Pg. 1



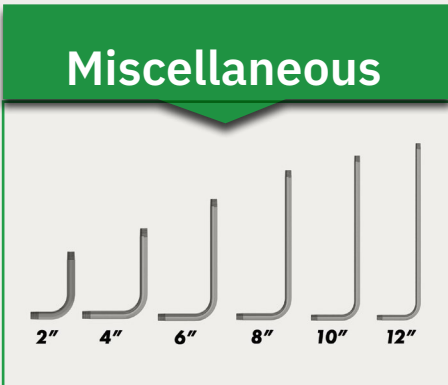
● 1.3
Pg. 6



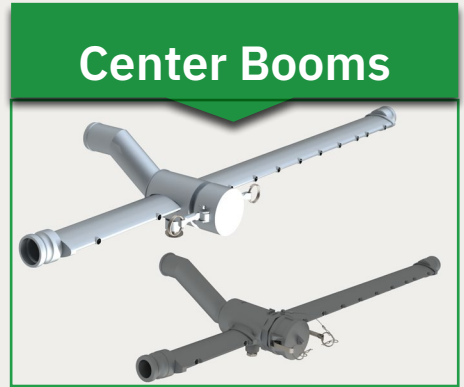
● 1.5
Pg. 14



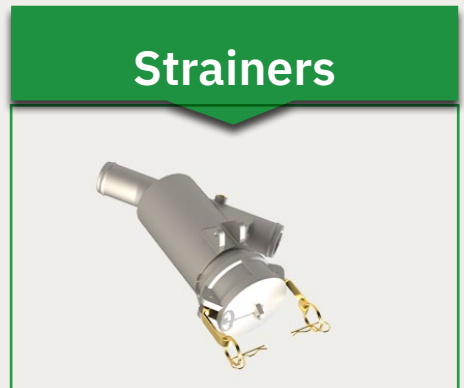
1.7
Pg. 15



● 1.2
Pg. 3



● 1.4
Pg. 12



● 1.6
Pg. 14



● 1.8
Pg. 16

Aluminum Custom Booms	Stainless Steel Custom Booms
<p>Gather Key Measurements:</p> <ul style="list-style-type: none"> Overall Boom Length Inboard End to First Fitting Distance Between Fitting Centers Boom Hanger Spacing <p>Choose: Tubing Sizes: 2.68" or 3.38" Shape Option: Available in streamline shape (only)</p> <p>Choose Inboard Fitting: Sizes: 1", 1 1/2", or 2" Type: NPT or OD Gender: Male or Female</p>	<p>Gather Key Measurements:</p> <ul style="list-style-type: none"> Overall Boom Length Inboard End to First Fitting Distance Between Fitting Centers Boom Hanger Spacing <p>Choose: Tubing Sizes: 1.99", 2.65", or 3.33" Shape Options: Round, streamline, and airfoil (airfoil only available in 2.65")</p> <p>Choose Inboard Fitting: Sizes: 1", 1 1/2", or 2" Type: OD or Hose Fitting Gender: Male or Female</p>

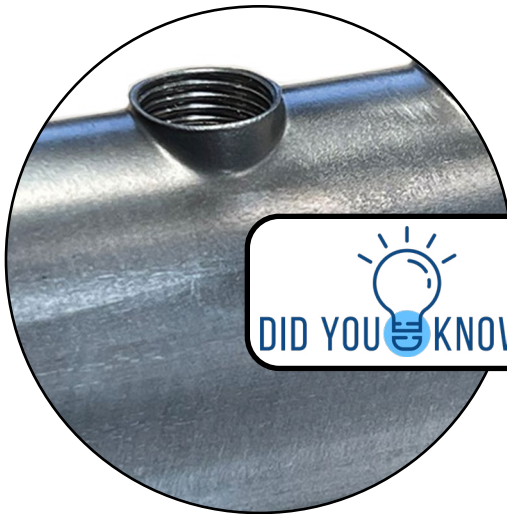
1.1 STREAMLINE BOOMS

Transland manufactures a variety of booms in both stainless steel and aluminum. All our booms come standard with a bleed back tube built inside the boom. This allows any air bubbles that would trap liquid inside the boom to be released quickly and easily.



Aluminum Streamline Booms

PN	Description	Length (inches)	Outlets	Inboard Connection	Outboard Connection	Aircraft Compatibility
26407	2" Aluminum Streamline Boom	183"	1/8" NPT, factory spacing	1.5" Female Q.D.	1" NPT Brass Plug	Thrush 510
26408	2" Aluminum Streamline Boom	223"	1/8" NPT, factory spacing	1.5" Female Q.D.	1" NPT Brass Plug	Thrush 510
26405	2" Aluminum Streamline Boom, for standard and drop systems	191"	1/8" NPT, factory spacing	1.5" Female Q.D.	1" NPT Plug	AT-402/502
26404	2.5" Aluminum Streamline Boom, for standard and drop systems	217"	1/4" NPT, factory Spacing	2" Female Q.D.	1" NPT Brass Plug	AT-602, Thrush 660 & 710
26406	2.5" Aluminum Streamline Boom, for standard and drop systems	234"	1/4" NPT, factory spacing	2" Female Q.D.	1" NPT Brass Plug	AT-802, Thrush 660 & 710



DID YOU KNOW?

- Weldless outlets = **Fewer crack initiation points**, improving durability.
- **Constructed with thicker material**, making boom **more rigid and durable**.
- **Less maintenance** required, reducing costs and maximizing uptime.

Stainless Steel Streamline Booms

PN	Description	Length (inches)	Outlets	Inboard Connection	Outboard Connection	Aircraft Compatibility
56520	2" Stainless Steel Streamline Boom	224"	1/8" NPT, factory spacing	1.5" Female Q.D.	1" Stainless Plug	Thrush 510
55404	2" Stainless Steel Streamline Boom	185"	38 total, 1/8" female fittings, 5 3/8" spacing	2" Female Q.D.	1.5" Female with plug	AT-401, AT-402 & AT-502
56521	2" Stainless Steel Streamline Boom	209"	1/8" female fittings, 38 at factory spacing	1.5" Female Q.D.	1" Female Plug	AT-401B & AT-402A
56524	2" Stainless Steel Streamline Boom	210"	1/8" female fittings, 6" spacing	1.5" Hose Barb	1" NPT Female	Ag Cat Aircraft
56525	2" Stainless Steel Streamline Boom	200"	1/8" female fittings, 6" spacing	1.5" Hose Barb	1" NPT Female	PA-36 Aircraft
56543	2" Stainless Steel Streamline Boom	192"	1/8" female fittings, 5.5" spacing	1.5" Female Q.D.	1" Male Q.D. with Dust Cap	Cessna Aircraft
55402	2" Stainless Steel Streamline Boom, for standard and drop systems	188"	1/8" female fittings, factory spacing	2" Female Q.D.	1.5" Female Plug	AT-401, AT-402 & AT-502
55403	2" Stainless Steel Streamline Boom	184"	1/8" NPT, factory spacing	1.5" Female Q.D.	1" Female Stainless Plug	Thrush 510
56595	2.5" Stainless Steel Streamline Boom, for standard and drop systems	217"	1/4" NPT, factory spacing	2" Female Q.D.	1" Stainless Plug	AT-602, Thrush 660 & 710
56460	2.5" Stainless Steel Streamline Boom, for standard and drop systems	233"	1/4" NPT, factory spacing	2" Female Q.D.	1" Stainless Plug	AT-802, Thrush 660 & 710

1.2 CENTER BOOMS

Transland manufactures a variety of center booms to fit all types of aircraft. Many of our standard center booms are made to match our streamline booms. Center booms with filter screens and without filter screens are available. Filter mesh sizes available from 20-100 mesh.

Aluminum Center Booms

PN	Description	Length (inches)	Fittings	Inlet	Outlet	Strainer	Aircraft Compatibility
25416	Aluminum Center Boom for Drop System	46"	1/4" NPT	2" Hose Barb	1.5" Male Q.D.	40 Mesh Filter, 3" Dust Cap	AT-401/402
25414	Aluminum Center Boom for Drop System	54"	1/4" NPT	2" Hose Barb	1.5" Male Q.D.	40 Mesh Filter, 3" Dust Cap	AT-502
25412	Aluminum Center Boom for Drop System	55"	1/4" NPT	2.5" Hose Barb	2" Male Q.D.	40 Mesh Filter, 3" Dust Cap	AT-602
25410	Aluminum Center Boom for Drop System	58"	1/4" NPT	2.5" Hose Barb	2" Male Q.D.	40 Mesh Filter, 3" Dust Cap	AT-802
25413	Aluminum Center Boom for Standard System	55"	1/4" NPT	2.5" Hose Barb	2" Male Q.D.	40 Mesh Filter, 3" Dust Cap	AT-602
25411	Aluminum Center Boom for Standard System	58"	1/4" NPT	2.5" Hose Barb	2" Male Q.D.	40 Mesh Filter, 3" Dust Cap	AT-802
25417	Aluminum Center Boom for Standard System	46"	1/4" NPT	2" Hose Barb	1.5" Male Q.D.	40 Mesh Filter, 3" Dust Cap	AT-401/402
25415	Aluminum Center Boom for Standard System	54"	1/4" NPT	2" Hose Barb	1.5" Male Q.D.	40 Mesh Filter, 3" Dust Cap	AT-502
26522	Aluminum Center Boom No Strainer	46"	1/8" NPT	2" Hose Barb	1.5" Male Q.D.	N/A	Thrush 510
26058	Aluminum Center Boom with Strainer	46"	1/4" NPT	2" Hose Barb	1.5" Male Q.D.	40 Mesh Filter, 3" Dust Cap	Thrush 510
29085	Aluminum Center Boom with Strainer	48"	1/4" NPT	2.5" Hose Barb	2" Male Q.D.	40 Mesh Filter, 3" Dust Cap	Thrush 660 & 710

Stainless Steel Center Booms

PN	Description	Length (inches)	Fittings	Inlet	Outlet	Strainer	Aircraft Compatibility
56522	Stainless Center Boom No Strainer	45"	1/8" NPT	2" Hose Barb	1.5" Male Q.D.	N/A	Thrush 510
57522	Stainless Center Boom No Strainer	48"	1/8" NPT	2" Hose Barb	1.5" Male Q.D.	N/A	Thrush 660
59102	Stainless Steel Center Boom for Drop System	40.77"	1/8" NPT	2" Hose Barb	1.5" Male Q.D.	40 Mesh Filter, 3" Dust Cap	AT-401/402
59106	Stainless Steel Center Boom for Drop System	45.87"	1/8" NPT	2" Hose Barb	1.5" Male Q.D.	40 Mesh Filter, 3" Dust Cap	AT-401/402
59104	Stainless Steel Center Boom for Drop System	54"	1/8" NPT	2" Hose Barb	1.5" Male Q.D.	30 Mesh Filter, 3" Dust Cap	AT-502
59202	Stainless Steel Center Boom for Drop System	48.38"	1/8" NPT	2" Hose Barb	1.5" Male Q.D.	40 Mesh Filter, 3" Dust Cap	AT-502
59094	Stainless Steel Center Boom for Drop System	55"	1/4" NPT	2.5" Hose Barb	2" Male Q.D.	40 Mesh Filter, 3" Dust Cap	AT-602
59194	Stainless Steel Center Boom for Drop System	54"	1/8" NPT	2.5" Hose Barb	2" Male Q.D.	30 Mesh Filter, 3" Dust Cap	AT-602
59002	Stainless Steel Center Boom for Drop System	58"	1/4" NPT	2.5" Hose Barb	2" Male Q.D.	40 Mesh Filter, 3" Dust Cap	AT-802
59192	Stainless Steel Center Boom for Drop System	58"	1/4" NPT	2.5" Hose Barb	2" Male Q.D.	40 Mesh Filter, 3" Dust Cap	AT-802
59029	Stainless Steel Center Boom for Standard System	46.3"	1/8" NPT	2" Hose Barb	1.5" Male Q.D.	40 Mesh Filter, 3" Dust Cap	AT-401/402
59105	Stainless Steel Center Boom for Standard System	46"	1/8" NPT	2" 45° Hose Barb	1.5" Male Q.D.	30 Mesh Filter, 3" Dust Cap	AT-401/402
59003	Stainless Steel Center Boom for Standard System	53.76"	1/8" NPT	2" Hose Barb	1.5" Male Q.D.	40 Mesh Filter, 3" Dust Cap	AT-502
59103	Stainless Steel Center Boom for Standard System	54"	1/8" NPT	2" Hose Barb	1.5" Male Q.D.	40 Mesh Filter, 3" Dust Cap	AT-502
59096	Stainless Steel Center Boom for Standard System	50.5"	1/4" NPT	2.5" Hose Barb	2" Male Q.D.	40 Mesh Filter, 3" Dust Cap	AT-602
59196	Stainless Steel Center Boom for Standard System	54.53"	1/4" NPT	2.5" Hose Barb	2" Male Q.D.	30 Mesh Filter, 3" Dust Cap	AT-602
59090	Stainless Steel Center Boom for Standard System	54"	1/4" NPT	2.5" Hose Barb	2" Male Q.D.	40 Mesh Filter, 3" Dust Cap	AT-802
59190	Stainless Steel Center Boom for Standard System	54"	1/4" NPT	2.5" Hose Barb	2" Male Q.D.	40 Mesh Filter, 3" Dust Cap	AT-802
59058	Stainless Steel Center Boom with Strainer	45"	1/8" NPT	2" Hose Barb	1.5" Male Q.D.	40 Mesh Filter, 3" Dust Cap	Thrush 510
59085	Stainless Steel Center Boom with Strainer	48"	1/8" NPT	2.5" Hose Barb	2" Male Q.D.	40 Mesh Filter, 3" Dust Cap	Thrush 660 & 710

'Classic' Center Booms

Classic Center Booms



These classic center booms are often mistaken for Y-strainers, but they serve a different purpose. Designed for fixed-wing aircraft with smaller fuselages, they accommodate 2" booms. Aluminum versions are available upon request, though supply is limited.

PN	Description	Length	Inlet	Outlet	Filter	Aircraft Compatibility
50849	Stainless Steel Classic Center Boom with 3" QD	11.75"	2" Hose Barb	1 1/2" Q.D. (Male)	30 Mesh Screen (PN 29540)*	Piper Aircraft
59241	Stainless Steel Classic Center Boom with 3" QD	13 7/8"	2" Hose Barb	1 1/2" Q.D. (Male)	40 Mesh Screen (PN 29539)*	AT-402, AT-502 & Cessna Aircraft
59043	Stainless Steel Classic Center Boom with 3" QD	8" (center to end of inlet)	2" Hose Barb	1 1/2" Q.D. (Male)	30 Mesh Screen (PN 29530)**	Ag Wagon, Brave, Cessna, Pawnee Aircraft
59045	Stainless Steel Classic Center Boom with 3" QD	9"	2" Hose Barb	1 1/2" Q.D. (Male)	40 Mesh Screen (PN 29529)**	Ag Wagon, Brave, Cessna, Pawnee Aircraft

*Customer can request these mesh screens:

- 20 mesh screen, PN 29541
- 30 mesh screen, PN 29540
- 40 mesh screen, PN 29539
- 50 mesh screen, PN 29538
- 80 mesh screen, PN 29545
- 100 mesh screen, PN 29537

These measure 8.79" in length.

**Customer can request these mesh screens:

- 20 mesh screen, PN 29531
- 30 mesh screen, PN 29530
- 40 mesh screen, PN 29529
- 50 mesh screen, PN 29528
- 100 mesh screen, PN 29527

These measure 6.97" in length.

See page 13 about choosing the right strainer and maintenance.

1.3 BOOM SHUT-OFF KITS

Transland engineers created a compact design for the partial boom shut-off to reduce drag and effect on spray pattern. Sectional control is done with electric valves. As a way to meet the various pilots' needs, the shut-off kits work with classic Transland booms and the new, patent-pending weldless stainless steel booms.

Shut-Off Kits WITHOUT the Booms

50% or 60% and RH Shut-Off without Booms



These kits come with:

- Valve OR Valves (depends upon kit option)
- Electrical Kit
- Cables
- Control Panel

This is designed for customers who DO NOT require new booms.

PN	Description	Aircraft Compatibility
24744	50% & RH Shut-Off Kit, for an existing Aluminum Boom	AT-502/Thrush 510
54744	50% & RH Shut-Off Kit, for an existing Stainless Steel Boom	AT-502/Thrush 510
24745	50% & RH Shut-Off Kit, for an existing Aluminum Boom	AT-602/802/Thrush 660
54745	50% & RH Shut-Off Kit, for an existing Stainless Steel Boom	AT-602/802/Thrush 660
24746	50% Shut-Off Kit, for an existing Aluminum Boom (no right-hand shut-off)	AT-502/602/802/Thrush
54746	50% Shut-Off Kit, for an existing Stainless Steel Boom (no right-hand shut-off)	AT-502/602/802/Thrush
53057	Right-Hand Shut-Off Only Kit, for an Existing Boom, Fits a 2" Boom	Air Tractor & Thrush
53056	Right-Hand Shut-Off Only Kit, for an Existing Boom, Fits a 2.5" Boom	Air Tractor & Thrush

All 50% and 60% Shut-Off Kits include a pancake valve (55051) with a **standard operating pressure of 45psi or below.**

If pressures **exceeding 45psi are required**, please **notify your dealer** when ordering a shut-off kit. The **pancake valve will be switched to a ball valve (55052)** capable of accommodating higher pressures.

Right-hand shut-off kits use a ball valve that can accommodate all pressure ranges.

Boom Shut-Off Kits with Right-Hand (RH) Shut-Off

50% or 60% and RH Shut-Off with Booms



These kits come with:

- 2 Weldless Booms
- Electrical kit with Valve
- Electrical kit with RH Valve
- Pilot Control Panel
- Cables

PN	Description	Material	Aircraft Compatibility
24724	50% Boom Kit & Right-Hand Shut-Off	Aluminum	AT-502
24725	60% Boom Kit & Right-Hand Shut-Off	Aluminum	AT-502
24726	50% Boom Kit & Right-Hand Shut-Off	Aluminum	AT-602
24727	60% Boom Kit & Right-Hand Shut-Off	Aluminum	AT-602
24728	50% Boom Kit & Right-Hand Shut-Off	Aluminum	AT-802/Thrush
24729	60% Boom Kit & Right-Hand Shut-Off	Aluminum	AT-802/Thrush
24730	50% Boom Kit & Right-Hand Shut-Off	Aluminum	Thrush 510
24731	60% Boom Kit & Right-Hand Shut-Off	Aluminum	Thrush 510
54724	50% Boom Kit & Right-Hand Shut-Off	Stainless Steel	AT-502
54725	60% Boom Kit & Right-Hand Shut-Off	Stainless Steel	AT-502
54726	50% Boom Kit & Right-Hand Shut-Off	Stainless Steel	AT-602
54727	60% Boom Kit & Right-Hand Shut-Off	Stainless Steel	AT-602
54728	50% Boom Kit & Right-Hand Shut-Off	Stainless Steel	AT-802/Thrush
54737	60% Boom Kit & Right-Hand Shut-Off	Stainless Steel	AT-802/Thrush
54730	50% Boom Kit & Right-Hand Shut-Off	Stainless Steel	Thrush 510
54731	60% Boom Kit & Right-Hand Shut-Off	Stainless Steel	Thrush 510

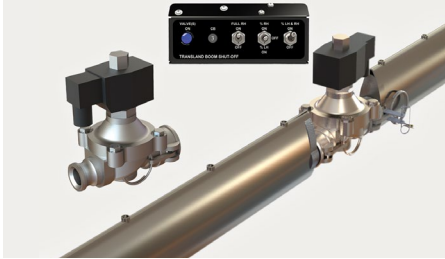
All 50% and 60% Shut-Off Kits include a pancake valve (55051) with a **standard operating pressure of 45psi or below**.

If pressures **exceeding 45psi are required**, please **notify your dealer** when ordering a shut-off kit. The **pancake valve will be switched to a ball valve (55052)** capable of accommodating higher pressures.

Right-hand shut-off kits use a ball valve that can accommodate all pressure ranges.

Boom Shut-Off Kits with No Right-Hand Shut-Off

50% or 60% Shut-Off with Booms



These kits come with:

- 2 Weldless Booms
- Electrical kit with Valve
- Pilot Control Panel
- Cables

Right-Hand Shut-Off is **NOT** included.

PN	Description	Material	Aircraft Compatibility
24732	50% Boom Kit	Aluminum	AT-502
24733	60% Boom Kit	Aluminum	AT-502
24734	50% Boom Kit	Aluminum	AT-602
24735	60% Boom Kit	Aluminum	AT-602
24736	50% Boom Kit	Aluminum	AT-802/Thrush
24737	60% Boom Kit	Aluminum	AT-802/Thrush
24738	50% Boom Kit	Aluminum	Thrush 510
24739	60% Boom Kit	Aluminum	Thrush 510
51133	50% Boom Kit	Stainless Steel	AT-502
54733	60% Boom Kit	Stainless Steel	AT-502
54734	50% Boom Kit	Stainless Steel	AT-602
54735	60% Boom Kit	Stainless Steel	AT-602
54720	50% Boom Kit	Stainless Steel	AT-802/Thrush
54737	60% Boom Kit	Stainless Steel	AT-802/Thrush
54738	50% Boom Kit	Stainless Steel	Thrush 510
54739	60% Boom Kit	Stainless Steel	Thrush 510

All 50% and 60% Shut-Off Kits include a pancake valve (55051) with a **standard operating pressure of 45psi or below**.

If pressures **exceeding 45psi are required**, please **notify your dealer** when ordering a shut-off kit. The **pancake valve will be switched to a ball valve (55052)** capable of accommodating higher pressures.

Right-Hand Shut-Off Only Boom Shut-Off Kits

Right-Hand Shut-Off Only with Booms



These kits come with:

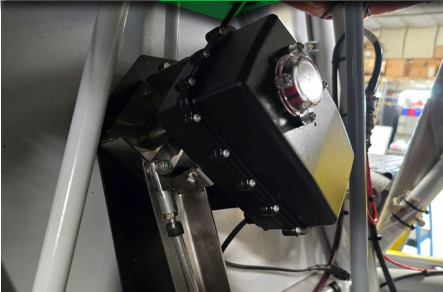
- 2 Weldless Booms
- Electrical kit with RH Valve
- Pilot Control Panel
- Cables

PN	Description	Material	Aircraft Compatibility
24740	Boom Kit with Right-Hand Shut-Off Only	Aluminum	AT-502
24741	Boom Kit with Right-Hand Shut-Off Only	Aluminum	AT-602
24742	Boom Kit with Right-Hand Shut-Off Only	Aluminum	AT-802/Thrush
24743	Boom Kit with Right-Hand Shut-Off Only	Aluminum	Thrush 510
54740	Boom Kit with Right-Hand Shut-Off Only	Stainless Steel	AT-502
54741	Boom Kit with Right-Hand Shut-Off Only	Stainless Steel	AT-602
54742	Boom Kit with Right-Hand Shut-Off Only	Stainless Steel	AT-802/Thrush
54743	Boom Kit with Right-Hand Shut-Off Only	Stainless Steel	Thrush 510

Right-hand shut-off kits use a ball valve that can accommodate all pressure ranges.

Remote Mount Actuator

Actuator



Remote Mount Actuator (PN 58291) for **Manual Right-Hand Valve Shut-Off**

Customer Benefits:

- Minimizes the disruption to the spray system
- The actuator uses a toggle switch, reducing pilot fatigue

Kit PN	Components of Kit	Aircraft Compatibility
58291	- Electric Motor for Electric Boom RH Valve - Remote Mount Brace - Push-Pull Cable Assembly - Pilot Control Panel (Switch)	AT-802

Rinsing the Boom



1. Safety Measures

Wear appropriate personal protective equipment (PPE) such as gloves, goggles, and respirators.

2. Drain Residual Chemicals

Ensure that all leftover chemicals are completely drained from the tank and lines.

3. Rinse Out the Hopper

Rinse out the hopper with water. It is important to wash it for as long as it takes to get out the chemical residues.

4. Flush the Boom

Connect a hose to the end of the boom. Turn on the water and allow the water to run through all the boom and nozzles. Allow the water to flush through the system for an adequate time to help ensure that all remaining chemical residues are removed from the system.

5. Visual Inspection

Check the boom and nozzles for any remaining residues or blockages.

6. Functional Test

Conduct a test spray with water to ensure that the system operates correctly, and spray patterns are uniform.

This information is only intended as reference material. Before applying any product/material, check with manufacturer labels for information about specific cleaning solutions to use after using their products.

1.4 STRAINERS

The efficiency of the entire spray system depends upon the strainer. Transland quality gives its strainers excellent filtration. Most Transland strainers feature quick disconnects (QD) for faster, easier maintenance. This user-friendly design simplifies removal and cleaning, helping minimize downtime in the field while maintaining effective system filtration. Transland offers several types and sizes of strainers and replacement screens.

Line Strainers

PN	Description	Length	Inlet	Outlet	Filter	Aircraft Compatibility
20619	Aluminum Line Strainer with 3" QD	11.25"	2" Hose Barb	2" Hose Barb	20 Mesh Screen (PN 29541)*	AT-301, AT-402, & AT-502
59118	Stainless Steel Line Strainer with 3" QD	11.54"	2" Hose Barb	2" Hose Barb	30 Mesh Screen (PN 29540)*	AT-402, AT-502, Dromader, Thrush 400/550 series, & Thrush 600 series
59120	Stainless Steel Line Strainer with 3" QD	12.16"	2 1/2" Hose Barb	2 1/2" Hose Barb	30 Mesh Screen (PN 29540)*	AT-602
59121	Stainless Steel Line Strainer with 3" QD	13.72"	2 1/2" Tube Weld In	2 1/2" Tube Weld In	30 Mesh Screen (PN 29540)*	AT-602/802
59122	Stainless Steel Line Strainer with 3" QD	13.10"	2" Tube Weld In	2" Tube Weld In	30 Mesh Screen (PN 29540)*	AT-301, AT-402, AT-502, & Thrush 510
59136	Stainless Steel Line Strainer with 3" QD	12.54"	3" Tube Weld In	3" Tube Weld In	30 Mesh Screen (PN 29540)*	AT-802

*Customer can request these mesh screens:

- 20 mesh screen, PN 29541
- 30 mesh screen, PN 29540
- 40 mesh screen, PN 29539
- 50 mesh screen, PN 29538
- 80 mesh screen, PN 29545
- 100 mesh screen, PN 29537

These measure 8.79" in length.

See next page about choosing the right strainer and maintenance.



- **Debris Filtration:** Strainers are designed to filter out debris, particulates, and contaminants from the liquid being sprayed. This **helps prevent clogging in the nozzles**, which can cause uneven spray patterns and reduce the effectiveness of the application.
- **Protecting Equipment:** By **filtering out debris**, strainers **protect more sensitive components of the spray system**, such as pumps, valves, and nozzles, from damage or wear. This **can extend the lifespan** of the equipment and **reduce maintenance costs**.

Y-strainers are often confused with classic center booms. If you don't see what you are looking for in this section, please refer to the 'Classic' Center Booms section.

PN	Description	Length	Inlet	Outlet	Filter	Aircraft Compatibility
20841	Aluminum Y-Strainer with over-center latch	10"	2" Hose Barb	1 1/2" Hose Barb	40 Mesh Screen (PN 21524)*	Cessna Aircraft

*Customer can request these mesh screens:

- 20 mesh screen, PN 21518
- 30 mesh screen, PN 21521
- 40 mesh screen, PN 21524
- 100 mesh screen, PN 21557

These measure 6.75" in length.

See below about choosing the right strainer and maintenance.

CHOOSING THE RIGHT STRAINER

- The **mesh size of the strainer is critical** and should be chosen based on the **type of liquid** being applied and the **size of the particles** that need to be filtered out.
- **Finer mesh sizes can filter out smaller particles but may require more frequent cleaning or replacement.**

MAINTENANCE

- **Regular Cleaning:** Strainers require regular inspection and cleaning to ensure they are not clogged, as a **clogged strainer** can restrict flow and cause pressure issues in the boom system, **leading to uneven application or even system failure.**
- **Replacement:** Over time, strainers can wear out or become damaged, especially if they are exposed to harsh chemicals or large amounts of debris. **Regular replacement is necessary to maintain optimal performance.**

1.5 BOOM CLAMPS

Transland boom clamps make switching from dry to liquid quick and easy — just a few clicks and the switch is complete. Transland Boom Clamps are available in aluminum and stainless steel.

Boom Clamps



PN	Description	Material	Boom Size	Features
26104	Small Boom Clamp	Aluminum	2"	Rubber silicon padding, stainless steel safety pin for protection and locking
26105	Large Boom Clamp	Aluminum	2.5"	Rubber silicon padding, stainless steel safety pin for protection and locking
51856	Small Boom Clamp	Stainless Steel	2"	Stainless steel safety pin for protection and locking
51857	Large Boom Clamp	Stainless Steel	2.5"	Stainless steel safety pin for protection and locking

1.6 BOOM HANGERS

Transland stainless steel boom hangers resist corrosion that often occurs in aluminum hangers. When installing these hangers, tighten the hangers so that there is no rattling. In addition, it is important to keep everything tight on the boom system because this will avoid vibrations that lead to cracking.

Boom Hangers



All boom hanger kits include:

- Boom Hanger (single hanger)
- Boom Mounting Pad

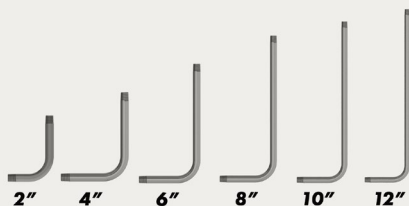
Boom Hanger Kit PN	Aircraft Compatibility
50504	AT402
50505	AT502/602
50506	AT802

1.7 MISCELLANEOUS

This category includes essential accessories like J-Tubes, nipples, and elbows—key fittings designed to support proper installation, connectivity, and performance across various boom configurations.

J-Tubes

J-Tubes

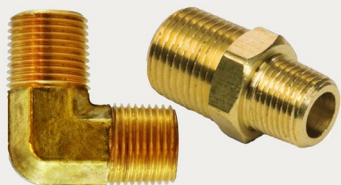


J-Tubes' shape helps improve canopy penetration, reduce drift potential, and enhance overall spray coverage—especially in taller crops or under variable wind conditions. Commonly paired with CP nozzles, J-Tubes are a simple yet effective addition for operators aiming to fine-tune their application pattern.

PN	Description	Pipe Thread
16099	2" J-Tube	1/8" NPT
16100	4" J-Tube	1/8" NPT
16101	6" J-Tube	1/8" NPT
16102	8" J-Tube	1/8" NPT
16103	10" J-Tube	1/8" NPT
16104	12" J-Tube	1/8" NPT
16141	6" J-Tube	1/4" NPT
16142	8" J-Tube	1/4" NPT
16143	50% Boom Kit	1/4" NPT
16144	10" J-Tube	1/4" NPT
16145	12" J-Tube	1/4" NPT

Elbows and Nipples

Elbows and Nipples



CP offers a variety of brass or stainless elbows and nipples in 1/8" male NPT. Reducer nipple 1/4" x 1/8" male NPT and Reducer Elbow 1/4" x 1/8" male NPT.

PN	Description
CP306-BR	Brass Reducer Nipple 1/4" male to 1/8" female
CP307-B	Brass Hex Nipple 1/8" Male/Male
CP307-BR	Brass Hex Reducer Nipple 1/4" x 1/8" Male/Male
CP307-P	1/4" Plug
CP307-SS	Stainless Hex Nipple 1/8" Male/Male
CP308-B	Brass 90° Elbow 1/8" Male/Male
CP308-BR	Brass 90° Elbow Reducer 1/4" x 1/8" Male/Male
CP308-SS	Stainless 90° Elbow 1/8" Male/Male

1.8 CUSTOM BOOMS

If your aircraft requires a boom configuration outside of our standard offerings, we've got you covered. Contact your dealer or Transland's officer for more details.

Transland Boom Guide



Transland
1206 Hatton Rd.
Wichita Falls, TX 76302

www.TranslandLLC.com