

# Transland Valves Guide



Handle locking mechanism installed at Air Tractor.



Available in Aluminum & Stainless Steel

# OVERVIEW

## Spray Valves

Transland offers high-quality spray valve options in both stainless steel and aluminum. Our three-way ball spray valves give pilots control over the spray system. When switched off, liquid recirculates to the hopper, while the venturi in the recirculating port connects to the discharge port, creating negative pressure on the boom to reduce nozzle pressure and mitigating trailing. Not looking to buy a new spray valve? No problem—Transland offers a variety of rebuild kits to help keep your equipment in working order.

## Loader Valves

Transland loader valves support efficient chemical loading with aluminum options for lightweight durability and stainless steel for strength and corrosion resistance. Available in multiple sizes and configurations, they feature quick-connect inlets, left- and right-hand options, and service kits for easy maintenance.

## Butterfly Valves

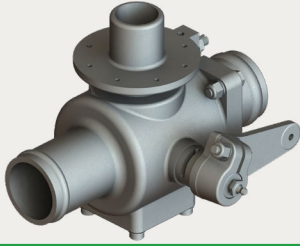
Transland Butterfly valves attached to the gate box can serve as an emergency shut-off mechanism. They are compact and suitable when space is limited. Durable and reliable butterfly valves can quickly and effectively stop the flow of material. Transland offers aluminum and stainless steel options.

## Boom Shut-Off Valves

Transland offers aluminum and stainless steel ball boom shut-off valves. Butterfly boom shut-off valves only come in stainless steel and are designed for Air Tractor models.

● 1.1  
Pg. 1

## Spray Valves



● 1.3  
Pg. 7

## Butterfly Valves



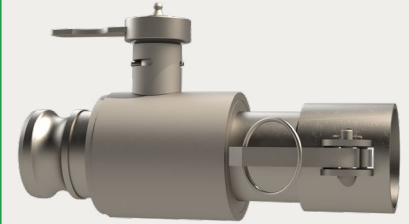
● 1.2  
Pg. 4

## Loader Valves



● 1.4  
Pg. 8

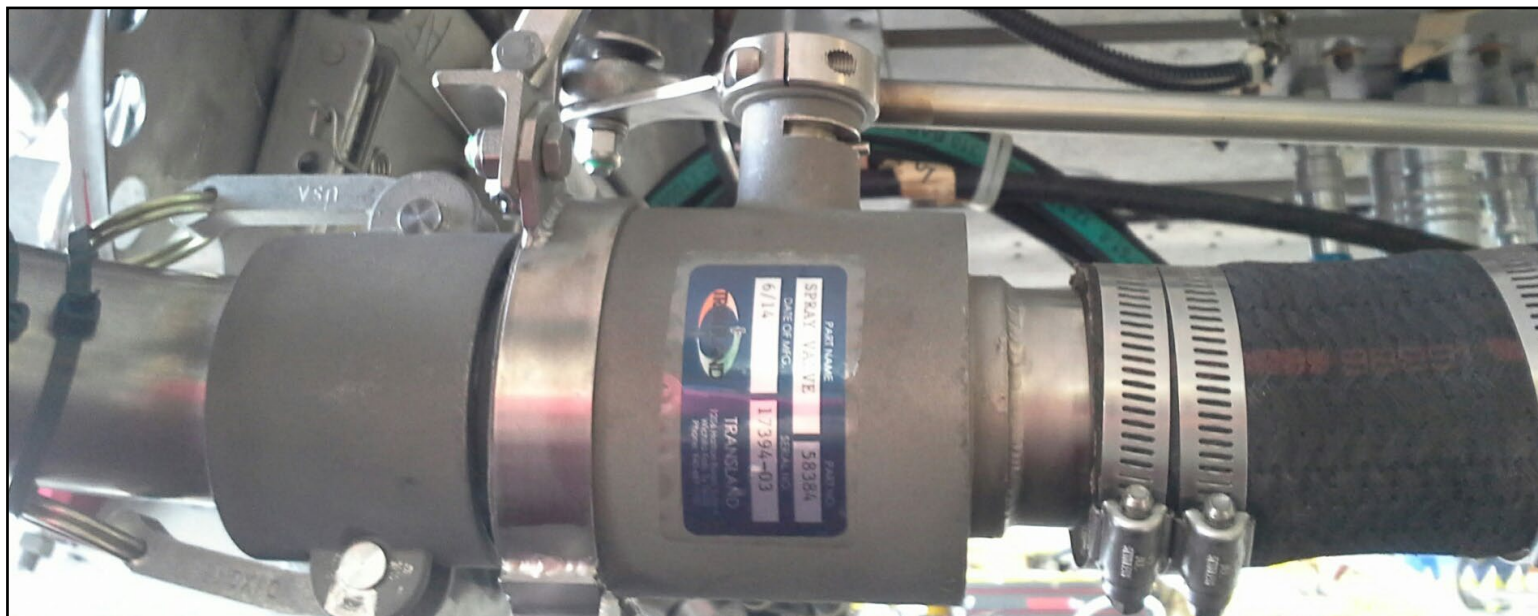
## Boom Shut-Off Valves



## 1.1 SPRAY VALVES

Transland offers a variety of spray valves designed for aerial application systems, allowing pilots to manage liquid dispersal efficiently. The spray valve section is divided into three parts:

- Direct Replacements for Basic Spray Valves Installed on Aircraft at Factory
- Not Direct Replacements
- Pre-Season Spray Valve Inspection Checklist



### Direct Replacements for Basic Spray Valves Installed on Aircraft at Factory

PN	Description	Inlet Type	Outlet Type	Aircraft Compatibility	Service Kit
20384	2" Aluminum Spray Valve	Quick Disconnect	Hose Barb	AT-402/502	54001
22384	2" Aluminum Spray Valve	Quick Disconnect	Quick Disconnect	AT-402/502	54001
58384	2" Stainless Steel Spray Valve	Quick Disconnect	Hose Barb	AT-402/502	53390
58384Q	2" Stainless Steel Spray Valve	Quick Disconnect	Quick Disconnect	AT-402/502	53390
20385	2.5" Aluminum Spray Valve	Quick Disconnect	Hose Barb	AT-602/802	54508
20385Q	2.5" Aluminum Spray Valve	Quick Disconnect	Quick Disconnect	AT-602/802	54508
58483	2.5" Stainless Steel Spray Valve	Quick Disconnect	Hose Barb	AT-602/802	54527
58483Q	2.5" Stainless Steel Spray Valve	Quick Disconnect	Quick Disconnect	AT-602/802	54527

## Not Direct Replacements

PN	Description	Inlet Type	Outlet Type	Aircraft Compatibility	Hand Orientation	Service Kit
20380	2" Aluminum Spray Valve	Hose Barb	Hose Barb	Ag Cat	Not specified	54002
20383	2" Aluminum Spray Valve	Hose Barb	Hose Barb	Cessna	Not specified	54001
21589	2" Aluminum Spray Valve	Quick Disconnect	Hose Barb	Piper Brave	Not specified	54001
22324	2" Aluminum Spray Valve (25° angle)	Quick Disconnect	Hose Barb	Piper Brave, Ag Cat	Not specified	54507
20882	2" Aluminum Spray Valve	Quick Disconnect	Hose Barb	Thrush	Not specified	54001
58324	2" Stainless Steel Spray Valve (25°)	Quick Disconnect	Quick Disconnect	Ag Cat	Not specified	53390
58380	2" Stainless Steel Spray Valve	Hose Barb	Hose Barb	Ag Cat	Not specified	53390
58383	2" Stainless Steel Spray Valve	Quick Disconnect	Hose Barb	Cessna	Not specified	53390
57789	2" Stainless Steel Spray Valve	Quick Disconnect	Hose Barb	Piper Brave	Not specified	53390
58882	2" Stainless Steel Spray Valve	Quick Disconnect	Hose Barb	Thrush	Not specified	53390
59589	2" Stainless Steel Spray Valve	Quick Disconnect	Hose Barb	Weatherly, 1965 Pawnee or later	Not specified	53390
53882	2.5" Stainless Steel Spray Valve	Quick Disconnect	Hose Barb	Thrush	Left Hand	54474
53382	3" Stainless Steel Spray Valve	Quick Disconnect	Hose Barb	Thrush 710	Not specified	54474
53383	3" Stainless Steel Spray Valve	Quick Disconnect	Hose Barb	Thrush, Cessna	Not specified	54474
53384	3" Stainless Steel Spray Valve	Quick Disconnect	Hose Barb	Air Tractor	Right Hand	54474

## Pre-Season Spray Valve Inspection Checklist

### Visual Inspection

- Check for cracks, corrosion, or wear on the valve body (stainless steel or aluminum).

### Functional Check

- Operate the valve manually to ensure smooth movement.

### Connections & Fittings

- Inspect hoses and fittings for leaks or damage.
- Verify that clamps and connections are secure.

### Pressure & Flow Test

- Run liquid through the system and check for proper flow direction. Placing a vacuum gauge on the boom allows you to check for negative flow.
- Confirm that the venturi effect creates negative pressure on the boom when the valve is OFF.

### Rebuild or Replace if Needed

- If any seals, seats, or components show wear, use a Transland rebuild kit.
- When ordering a rebuild kit for a stainless steel spray valve, provide the serial number and part number.
- If rebuilding isn't an option, consider replacing the valve.

## 1.2 LOADER VALVES

Transland offers aluminum and stainless steel loader valves designed for efficient chemical loading in agricultural aircraft. Aluminum loader valves are lightweight yet durable, available in 2", 2.5", and 3" sizes, with left-hand and right-hand options for compatibility with Air Tractor, Thrush, Piper, and Cessna aircraft. Stainless steel loader valves provide enhanced strength and corrosion resistance, making them ideal for high-pressure loading systems and aircraft like all Air Tractor models. Both types feature quick-connect inlets for fast loading, aircraft-specific compatibility, and available service kits for maintenance and longevity.

### Stainless Steel Loader Valves

PN	Description	Inlet Type	Outlet Type	Hand Orientation	Aircraft Compatibility	Service Kit
50391	2" Stainless Steel Load Valve	2" Hose Barb	2" NPT	Left Hand	Air Tractor, Ag Cat, Piper, Cessna	54009
52395	2" Stainless Steel Load Valve	N/A	2" NPT	Left Hand	Air Tractor, Thrush	54014
52313	3" Stainless Steel Load Valve	3" Hose Barb	3" NPT	Left Hand	Thrush	54531
54445	3" Stainless Steel Load Valve	3" Quick Disconnect	N/A	Left Hand	Air Tractor 802 and 602; AT502 (Right)	54532
54446	3" Stainless Steel Load Valve	3" Quick Disconnect	N/A	Right Hand	Air Tractor 802 and 602; AT502 (Left)	54532
54803	3" Stainless Steel Load Valve	3" Quick Disconnect 45°	N/A	Left Hand	Air Tractor 802 and 602; AT502 (Right)	54532
54804	3" Stainless Steel Load Valve	3" Quick Disconnect 45°	N/A	Right Hand	Air Tractor 802 and 602; AT502 (Left)	54532

## Aluminum Loader Valves

PN	Description	Inlet Type	Outlet Type	Hand Orientation	Aircraft Compatibility	Service Kit
20391	2" Aluminum Load Valve	2" Hose Barb	2" NPT	Left Hand	Air Tractor, Ag Cat, Piper, Cessna	54009
22395/ 22395-1	2" Aluminum Load Valve	N/A	2" NPT	Left Hand	Air Tractor, Thrush	54014
22396	2" Aluminum Load Valve	N/A	2" NPT	Right Hand	Air Tractor, Thrush	54014
20395	2.5" Aluminum Load Valve	N/A	2.5" NPT	Left Hand	Thrush	54014
22310	3" Aluminum Load Valve	3" Hose Barb	3" NPT	Right Hand	Thrush	54531
22313	3" Aluminum Load Valve	3" Hose Barb	3" NPT	Left Hand	Thrush	54531
24445	3" Aluminum Load Valve	3" Quick Disconnect	N/A	Left Hand	Air Tractor 802 and 602; AT502 (Right)	54532
24446	3" Aluminum Load Valve	3" Quick Disconnect	N/A	Right Hand	Air Tractor 802 and 602; AT502 (Left)	54532
24803	3" Aluminum Load Valve	3" Quick Disconnect 45°	N/A	Left Hand	Air Tractor 802 and 602; AT502 (Right)	54532
24804	3" Aluminum Load Valve	3" Quick Disconnect 45°	N/A	Right Hand	Air Tractor 802 and 602; AT502 (Left)	54532

## Loader Valve Adapters

Transland's Delrin loader valve adapters are engineered to support dry break connections, making them an excellent choice for aerial applicators. These adapters help protect loader valve threading, reduce wear and tear, and improve operational efficiency during material loading. Replacing the adapter is far more economical than repairing or replacing a damaged loader valve.

### Loader Valve Adapter



PN	Description
44330	3" NPT Female to 2" NPT Male Adapter
44331	2" NPT Female to 2" NPT Male Adapter

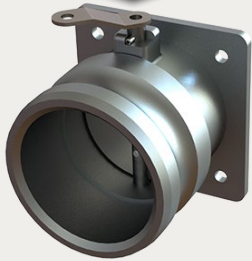
### Key Benefits

- **Protects Loader Valve Threading:** By acting as a barrier, the Delrin adapter absorbs threading wear and tear, extending the lifespan of your loader valve.
- **Cost-Effective Maintenance:** Replacing the adapter is far more economical than repairing or replacing a damaged loader valve.
- **Lightweight and Durable:** Manufactured from high-grade Delrin material, these adapters offer excellent durability without adding significant weight.
- **Streamlined Connections:** Transition between different sizes or maintain consistent sizing with ease, thanks to the precision-designed NPT threading.
- **Resistant to Corrosion:** Delrin's chemical-resistant properties make it highly effective in agricultural settings.
- **Perfect for Aerial Applicators:** These adapters provide a reliable, practical solution for the frequent loading demands of agricultural aerial application.

## 1.3 BUTTERFLY VALVES

Transland Butterfly Valves provide a compact and reliable solution for quick shut-off in aerial application systems. Mounted to the gate box, they act as an emergency shut-off mechanism, effectively stopping material flow when needed. Designed for limited-space installations, these valves are available in aluminum and stainless steel for durability and performance.

Butterfly Valve



PN	Description	Material
50879	2.5" Q.D. Butterfly Valve for Thrush models	Stainless Steel
53623	2" Q.D. Butterfly Valve	Stainless Steel
53624	2.5" Q.D. Butterfly Valve	Stainless Steel
53626	2.5" Q.D. Butterfly Valve	Stainless Steel
53625	3" Q.D. Butterfly Valve	Stainless Steel
53627	4" Q.D. Butterfly Valve	Stainless Steel
20879	2.5" Q.D. Butterfly Valve for Thrush models	Aluminum
23626	2.5" Q.D. Butterfly Valve	Aluminum
23625	3" Q.D. Butterfly Valve	Aluminum

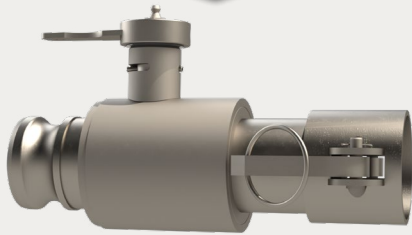
## 1.4 BOOM SHUT-OFF VALVES

Transland offers aluminum and stainless steel ball boom shut-off valves designed for installation between the gate box and pump, providing precise flow control. These valves are also placed between the center and outboard booms, allowing operators to shut off the right boom when needed.

**Additionally, Transland provides full right-hand, 50%, and 60% shut-off kits, which include both valves and booms for streamlined installation.**

### Ball Boom Shut-Off Valves

#### Ball Boom Shut-Off Valve



PN	Description	Material
56801	1.5" Butterfly Boom Shut-Off Valve	Stainless Steel
56802	2" Butterfly Boom Shut-Off Valve	Stainless Steel
58301	1.5" Ball Boom (Right) Shut-Off Valve	Stainless Steel
58302	2" Ball Boom (Right) Shut-Off Valve	Stainless Steel

### Boom Shut-Off Valve Cables

Boom Shut Off Valve Cables are used for opening and closing the boom shut-off valve. Cables with T-handles are available in a variety of lengths, from 4.5 ft to 8 ft long. Cables with a round handle are available in 5ft or 6ft lengths.

PN	Description	Length
25119	Push/Pull Round Knob Cable	5 feet
25122	Push/Pull Round Knob Cable	6 feet
25118	Push/Pull T-Handle Cable	4.5 feet
25124	Push/Pull T-Handle Cable	7 feet
25120	Push/Pull T-Handle Cable	5 feet
25123	Push/Pull T-Handle Cable	8 feet
25121	Push/Pull T-Handle Cable	6 feet

# Transland Valves Guide



Transland  
1206 Hatton Rd.  
Wichita Falls, TX 76302

[www.TranslandLLC.com](http://www.TranslandLLC.com)