

DEALER NAME: _____

DATE: _____

CUSTOMER NAME: _____

ADDRESS: _____

PHONE: _____

FAX: _____

EMAIL: _____

OUTBOARD FITTING

SIZE:

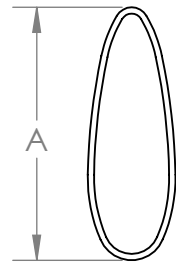
- 1/2"
- 3/4"
- 1"

FITTING TYPE:

- NPT
- QD
- MALE
- FEMALE

TUBING

SIZE: A



- 1.99"
- 2.69"
- 3.33"

SHAPE:

- ROUND
- AIRFOIL
- STREAMLINE

NOTE: AIRFOIL ONLY AVAILABLE IN 2.69"

INBOARD FITTING:

SIZE:

- 1"
- 1 1/2"
- 2"

FITTING TYPE:

- Q.D.
- HOSE FITTING
- MALE
- FEMALE

NIPPLES

SIZE:

- 1/8"
- 1/4"

NIPPLE TYPE:

- MALE
- FEMALE

BLEEDBACK:

- YES
- NO

BILL OF MATERIALS - TRANSLAND USE ONLY:

ITEM NO.	PART NO.	DESCRIPTION	QTY
1		INBOARD FITTING	1
2		TUBE	1
3		OUTBOARD FITTING	1
4		NIPPLE	

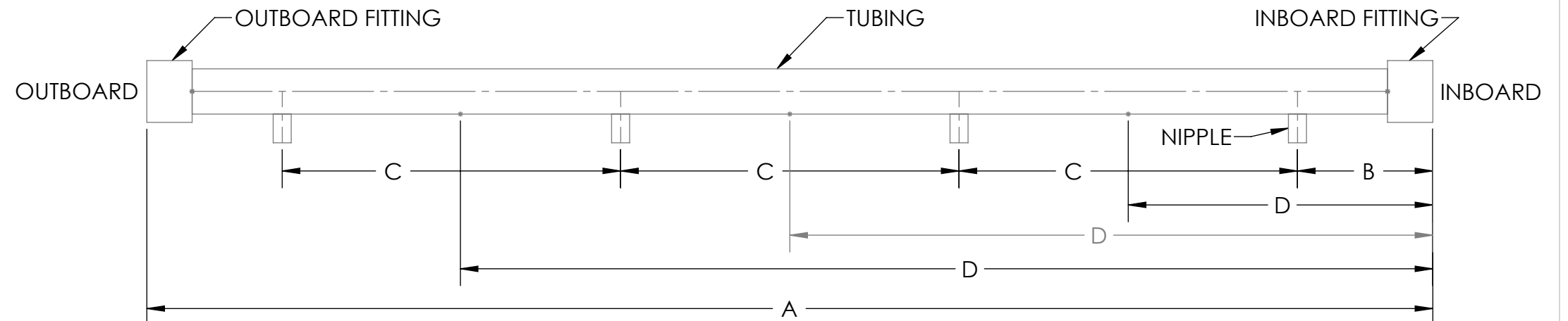
DIMENSIONS:

A - OVERALL LENGTH:

B - INBOARD END TO FIRST FITTING:

C - DISTANCE BETWEEN FITTING CENTERS:

D - BOOM HANGER SPACING:



	NAME	DATE	UNLESS OTHERWISE SPECIFIED: DIMENSIONS ARE IN INCHES	
DRAWN	JMV	5/6/10	TOLERANCES:	
CHECKED			FRACTIONS	±1/16
ENG APPR.			.XX	±.03
			.XXX	±.010
			ANGLE	± 1/2°
REMOVE ALL BURRS AND SHARP EDGES			HOLE DIA:	
INTERPRET DRAWING PER ANSI Y14.5M-1982			.0135 - .125 DIA.	+ .004 - .001
SURFACE ROUGHNESS PER MIL-STD-10			.1260 - .250 DIA.	+ .005 - .001
ALL MACHINED SURFACES NOT TO EXCEED 63 MICROINCHES PER MIL-STD-10 UNLESS NOTED			.2510 - .500 DIA.	+ .006 - .001
			.5010 - .750 DIA.	+ .008 - .001
			.7510 - 1.000 DIA.	+ .010 - .001
SolidWorks			 THIRD ANGLE PROJECTION	

1206 HATTON ROAD, WICHITA FALLS, TX 76302

TITLE: **CUSTOM S.S. BOOMS**

SIZE **B** DWG. NO. **56600** REV **B**

SCALE: NTS

SHEET 1 OF 1