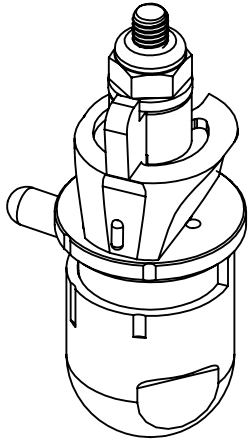
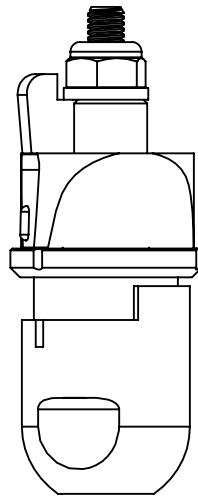
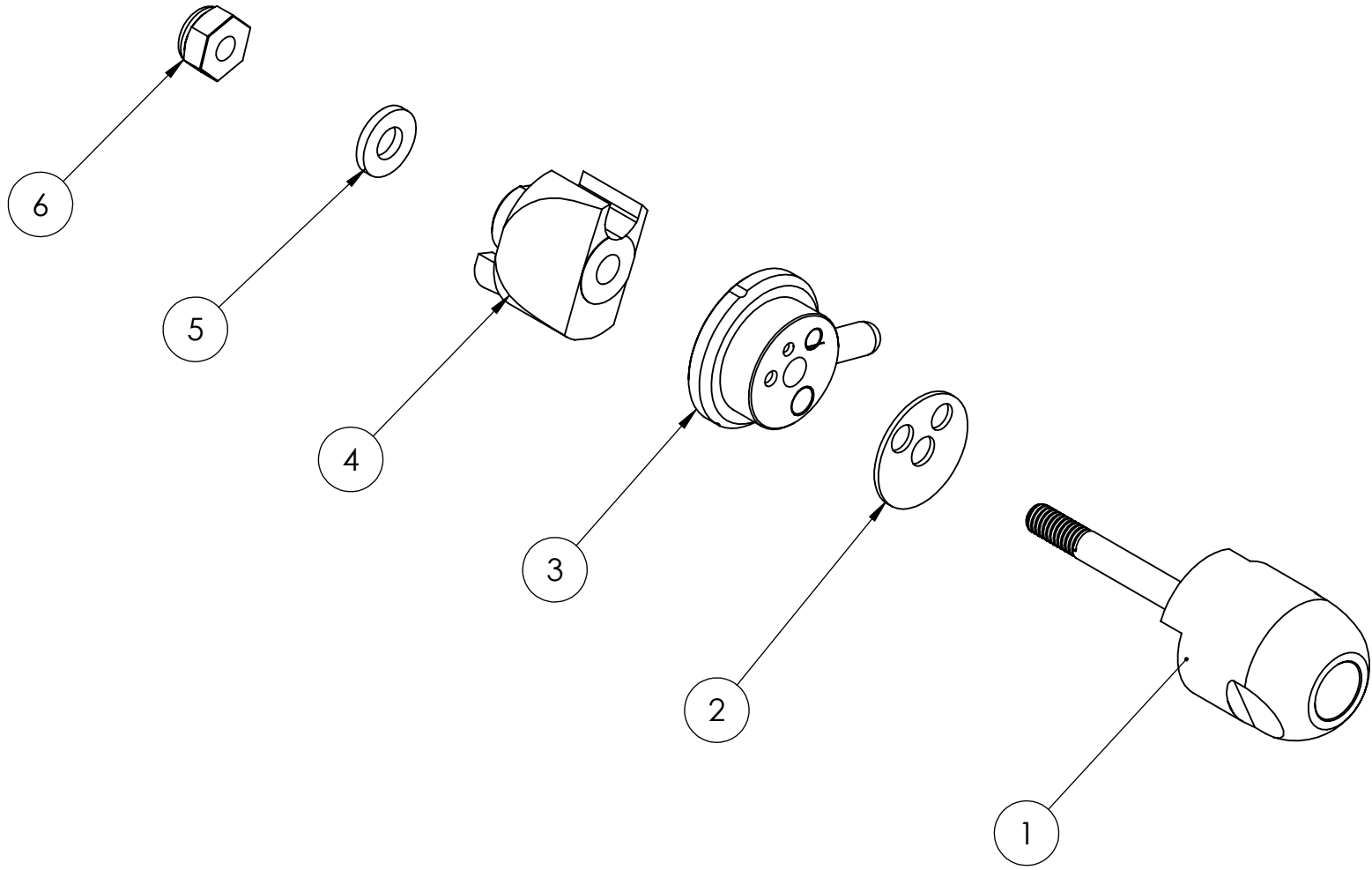


ITEM NO.	PART NUMBER	DESCRIPTION	QTY.
1	CPA201	STAINLESS STEEL AERIAL BODY	1
2	CPA230	AERIAL TEFLON SEAL	1
3	CPA217E	S/S STRAIGHT STREAM SELECTOR	1
4	CPA228P	POLY STRAIGHT STRM DEFLECTOR	1
5	CP388	S/S WASHER	1
6	CP387	S/S LOCKING NUT	1



PROPRIETARY AND CONFIDENTIAL
 THE INFORMATION CONTAINED IN THIS DRAWING IS THE SOLE PROPERTY OF CP PRODUCTS. ANY REPRODUCTION IN PART OR AS A WHOLE WITHOUT THE WRITTEN PERMISSION OF CP PRODUCTS IS PROHIBITED.

	NAME	DATE
DRAWN	CLK	10/12/15
CHECKED	RR	10/15/15
ENG APPR.	CLK	

REMOVE ALL BURRS AND SHARP EDGES
 INTERPRET DRAWING PER ANSI Y14.5M-1982
 SURFACE ROUGHNESS PER MIL-STD-10

ALL MACHINED SURFACES NOT TO EXCEED 63 MICROINCHES PER MIL-STD-10 UNLESS NOTED

SolidWorks

UNLESS OTHERWISE SPECIFIED:
 DIMENSIONS ARE IN INCHES

TOLERANCES:

FRACTIONS	±1/16
.XX	±.010
.XXX	±.005
ANGLE	± 1/2°

HOLE DIA:

.0135 - .125 DIA.	+0.04	-.001
.1260 - .250 DIA.	+0.05	-.001
.2510 - .500 DIA.	+0.06	-.001
.5010 - .750 DIA.	+0.08	-.001
.7510 - 1.000 DIA.	+0.10	-.001

THIRD ANGLE PROJECTION



TITLE: SST STRAIGHT STREAM W/POLT DEF		REV NC
SIZE B	DWG. NO. CP-07-3P	
SCALE: 1:2	WEIGHT:	SHEET 1 OF 1