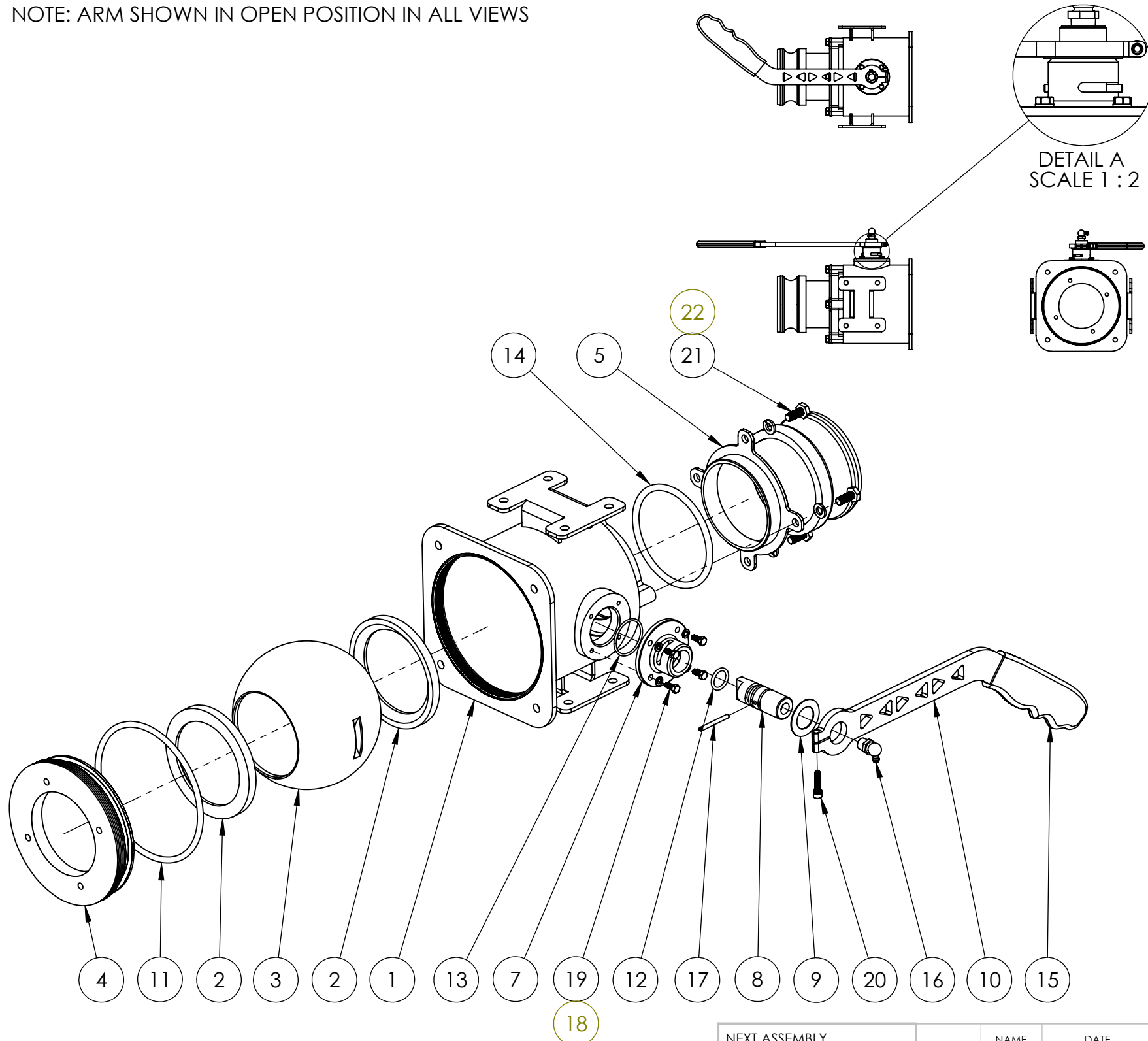
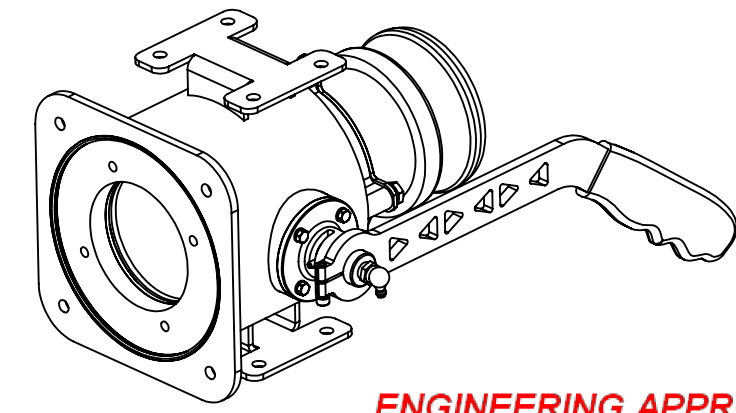


NOTE: ARM SHOWN IN OPEN POSITION IN ALL VIEWS



ITEM NO.	PART NO.	DESCRIPTION	QTY
1	52949	3" SST LOADER VALVE BODY FINAL WELDMENT	1
2	60803	TEFLON SEAT	2
3	57015	BALL	1
4	56398	RING SEAT	1
5	59947	ENDCAP	1
6			
7	54366	VALVE STEM HOUSING	1
8	48118	VALVE STEM	1
9	60049	WASHER	1
10	15785	ARM	1
11	81631	O-RING	1
12	81603	O-RING	1
13	81632	O-RING	1
14	81633	O-RING	1
15	82326	GRIP	1
16	86180	GREASE FITTING	1
17	86310	ROLL PIN	1
△C 18	80778	WASHER, LOCK	4
19	80373	BOLT, HX HD	4
20	80180	SCREW	1
△D 21	80104	BOLT, HX HD	4
△C 22	81195	WASHER, LOCK	4



**ENGINEERING APPROVED COPY
FOR MANUFACTURE**

REV.	DESCRIPTION	DATE	BY
E	REDRAWND & UPDATED GEOMETRY TO REFLECT CHANGES TO PARTS	12/14/2009	JMV
D	80104 WAS 80108	12/9/2009	JMV
C	81195 WAS 81203 ; 80778 WAS 81202	10/13/09	JMV
B	REDESIGN	7/28/09	JMV
REV.	DESCRIPTION	DATE	BY


REVISIONS

NEXT ASSEMBLY	NAME	DATE
FINAL	LDT	7/28/09
	RR	8/14/09
FINAL ASSEMBLY		
FINAL	SEE BOM	
	MATERIAL	
	FINISH	

UNLESS OTHERWISE SPECIFIED:
 DIMENSIONS ARE IN INCHES
 TOLERANCES:
 .XX ±.03
 .XXX ±.010
 ANGLE ± 1/2°

REMOVE ALL BURRS AND SHARP EDGES
 INTERPRET DRAWING PER ANSI Y14.5M-1982

THIRD ANGLE PROJECTION
SolidWorks



TITLE: 3" SST LH, A/T LOAD VALVE

SIZE **B** DWG. NO. **54445** REV **E**

SCALE: 1:8 WEIGHT: ?? SHEET 1 OF 1