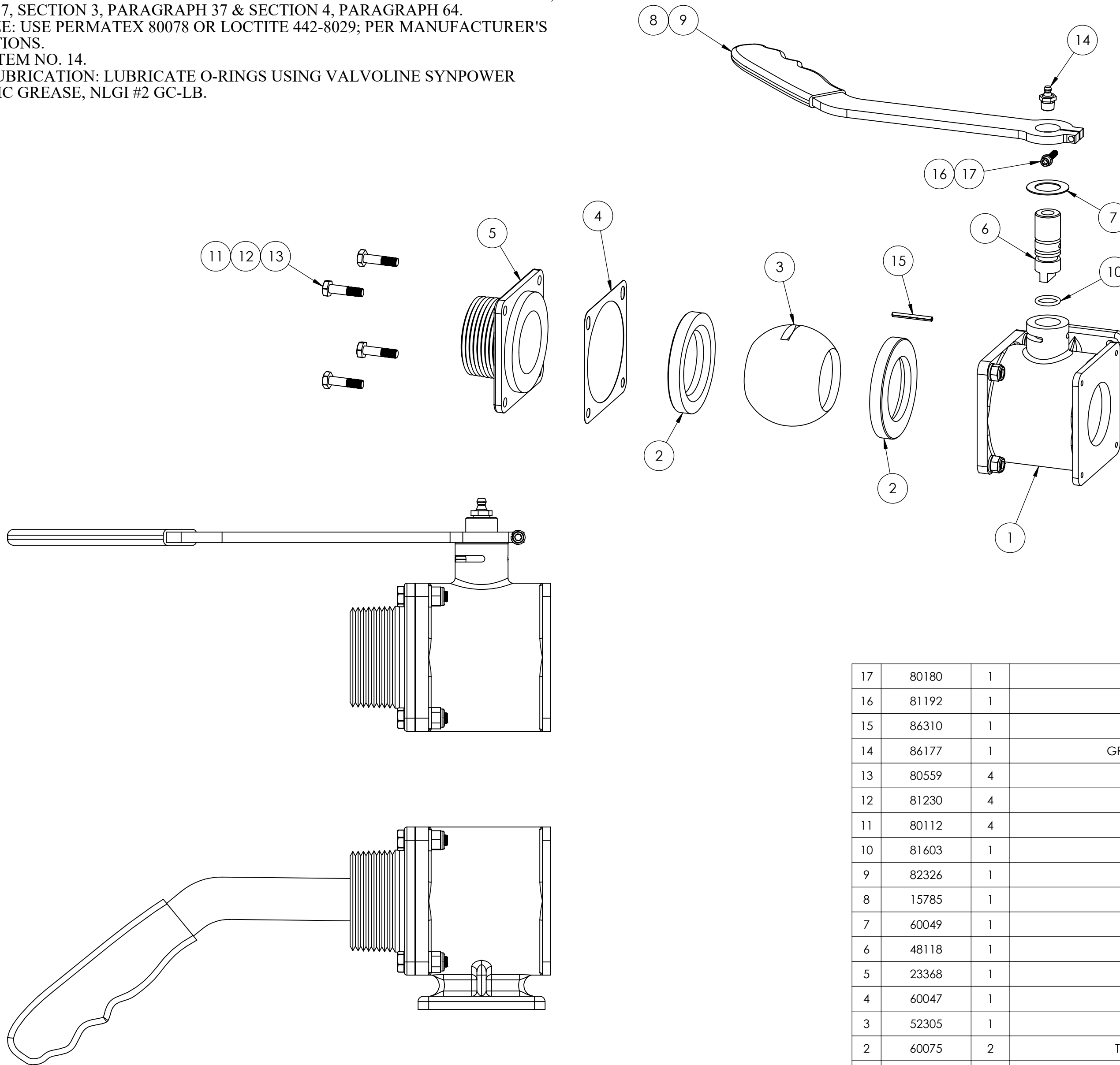


**NOTES** (UNLESS OTHERWISE SPECIFIED)

1. ARM IS SHOWING IN OPEN POSITION IN ALL VIEWS.
2. BOLT LENGTH: HARDWARE MAY BE SUBSTITUTED FOR LENGTH PER AC43.13-1B, CHAPTER 7, SECTION 3, PARAGRAPH 37 & SECTION 4, PARAGRAPH 64.
3. ANTI-SEIZE: USE PERMATEX 80078 OR LOCTITE 442-8029; PER MANUFACTURER'S INSTRUCTIONS.
4. GREASE ITEM NO. 14.
5. O-RING LUBRICATION: LUBRICATE O-RINGS USING VALVOLINE SYNPOWER SYNTHETIC GREASE, NLGI #2 GC-LB.

**ENGINEERING APPROVED COPY  
FOR MANUFACTURE**



ITEM NO.	PART NO.	NO. REQD	DESCRIPTION	SIZE	SPEC.	NO. REQD	NEXT ASSEMBLY	FINAL ASSEMBLY
17	80180	1	SCREW					
16	81192	1	WASHER					
15	86310	1	ROLL PIN					
14	86177	1	GREASE FITTING					
13	80559	4	NUT					
12	81230	4	WASHER					
11	80112	4	BOLT					
10	81603	1	O RING					
9	82326	1	GRIP					
8	15785	1	ARM					
7	60049	1	WASHER					
6	48118	1	SHAFT					
5	23368	1	SS CAP					
4	60047	1	GASKET					
3	52305	1	BALL					
2	60075	2	TEFLON SEAL					
1	42608	1	BODY - MACHINED, SS 2" LOADER VALVE					

REV.	EO#	DESCRIPTION	BY	DATE	APPR'D	DATE
K	11819	REDRAWN & REVISED	RC	7/18/18	CLK	7/20/18
J	7552	ITEM #21 CHANGED 80007 TO 80004, QTY 4	RC	11/16/15	JMV	11/16/15
H	6698	ADDED ITEM NO 23 (15695)	KGR	5/29/15	JMV	5/29/15
G	1967	ITEM 22 (81192) WAS 80777	PK	10/14/11	JMV	10/14/11
F	1589	REDRAWN D SIZE ; ROLLBACK TO REVISION D ; REMOVED ITEM 27 WAS 13388 QTY 2; REMOVED ITEM 28 WAS 85956 QTY4	JMV	7/18/11	JMV	7/18/11
E	1248	ADDED ITEMS 6, 23 & 26 ; ITEM 27 WAS 13388 ; ITEM 28 WAS 85956 ; ITEM 5 WAS 23387 ; ITEM 21 WAS 80007	JMV	5/4/11	JMV	10/13/11
D	-	REMOVED ITEM 29 DUE TO REVISION OF ITEM 1 ; 85956 WAS 85958	JMV	2/23/10	JMV	2/23/10
C	-	ITEM 1 WAS 23407	JMV	11/24/09	JMV	11/24/09
B	-	ITEM 22 WAS 81202 NOW 80777 ; ITEM 18 WAS 80202 NOW 80778	JMV	10/13/09	JMV	10/13/09
A	-	REDESIGN	JMV	8/20/09	JMV	8/20/09

DRAWN <b>JMV</b> 7/18/11 CHECKED <b>RR</b> 11/19/15 ENG APPR:	NAME DATE <b>JMV</b> 7/18/11 <b>RR</b> 11/19/15	UNLESS OTHERWISE SPECIFIED: DIMENSIONS ARE IN INCHES TOLERANCES: FRACTIONS ±1/16 .XX ±.03 .XXX ±.010 ANGLE ± 1/2° HOLE DIA: .0135 - .125 DIA. +.004 -.001 .1260 - .250 DIA. +.005 -.001 .2510 - .500 DIA. +.006 -.001 .5010 - .750 DIA. +.008 -.001 .7510 - 1.000 DIA. +.010 -.001	<p>1206 HATTON ROAD, WICHITA FALLS, TX 76302</p> <p><b>2" SS LOADER VALVE</b> <b>2" THREAD INLET, NO OUTLET</b></p>
REMOVE ALL BURRS AND SHARP EDGES INTERPRET DRAWING PER ANSI Y14.5M-1982 SURFACE ROUGHNESS PER MIL-STD-10 ALL MACHINED SURFACES NOT TO EXCEED 63 MICROINCHES PER MIL-STD-10 UNLESS NOTED	TITLE: <b>2" SS LOADER VALVE</b> 2" THREAD INLET, NO OUTLET	SIZE <b>C</b> DWG. NO. <b>52395</b> REV <b>K</b>	SCALE: NTS MODEL: SHEET 1 OF 1