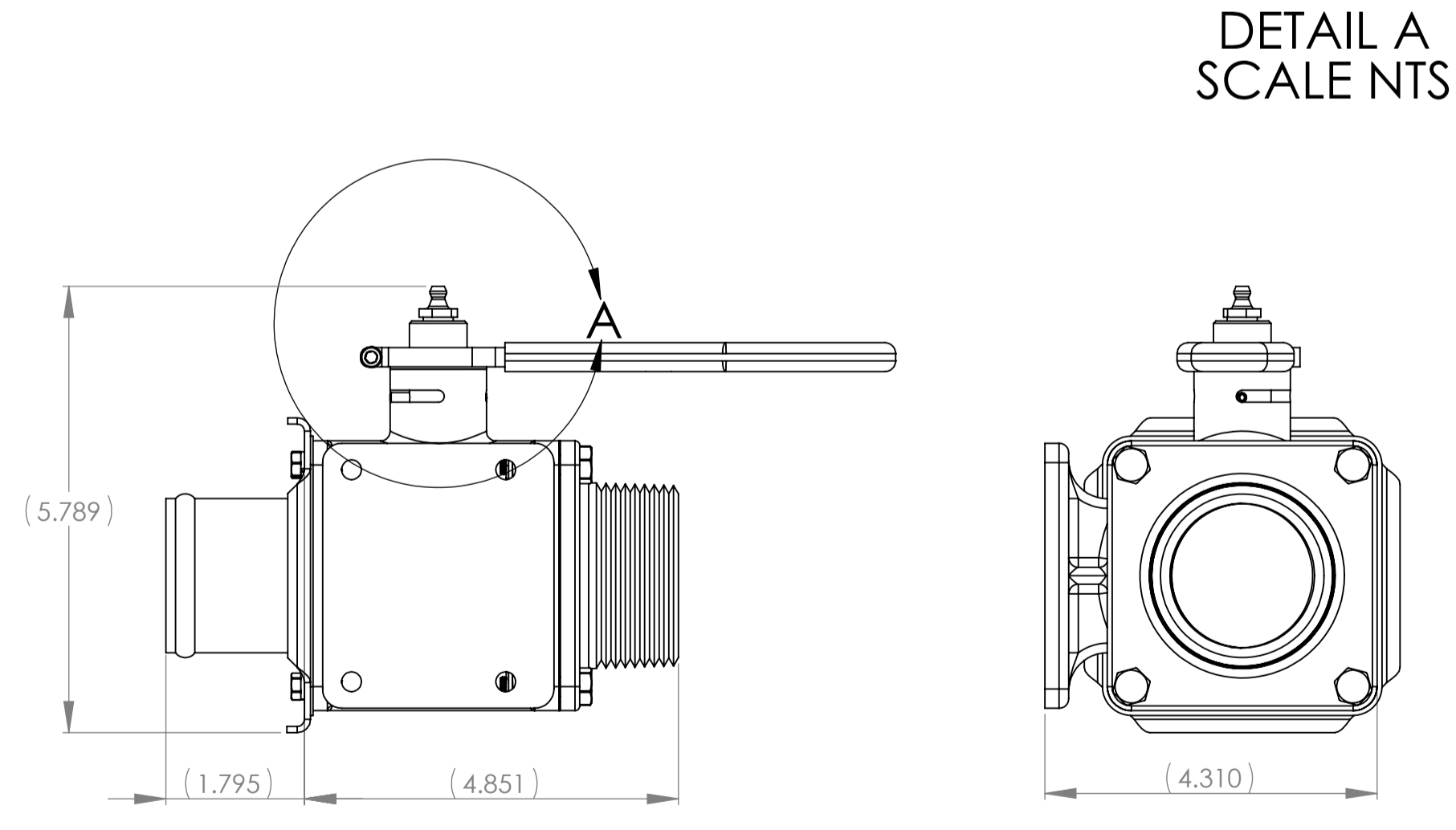
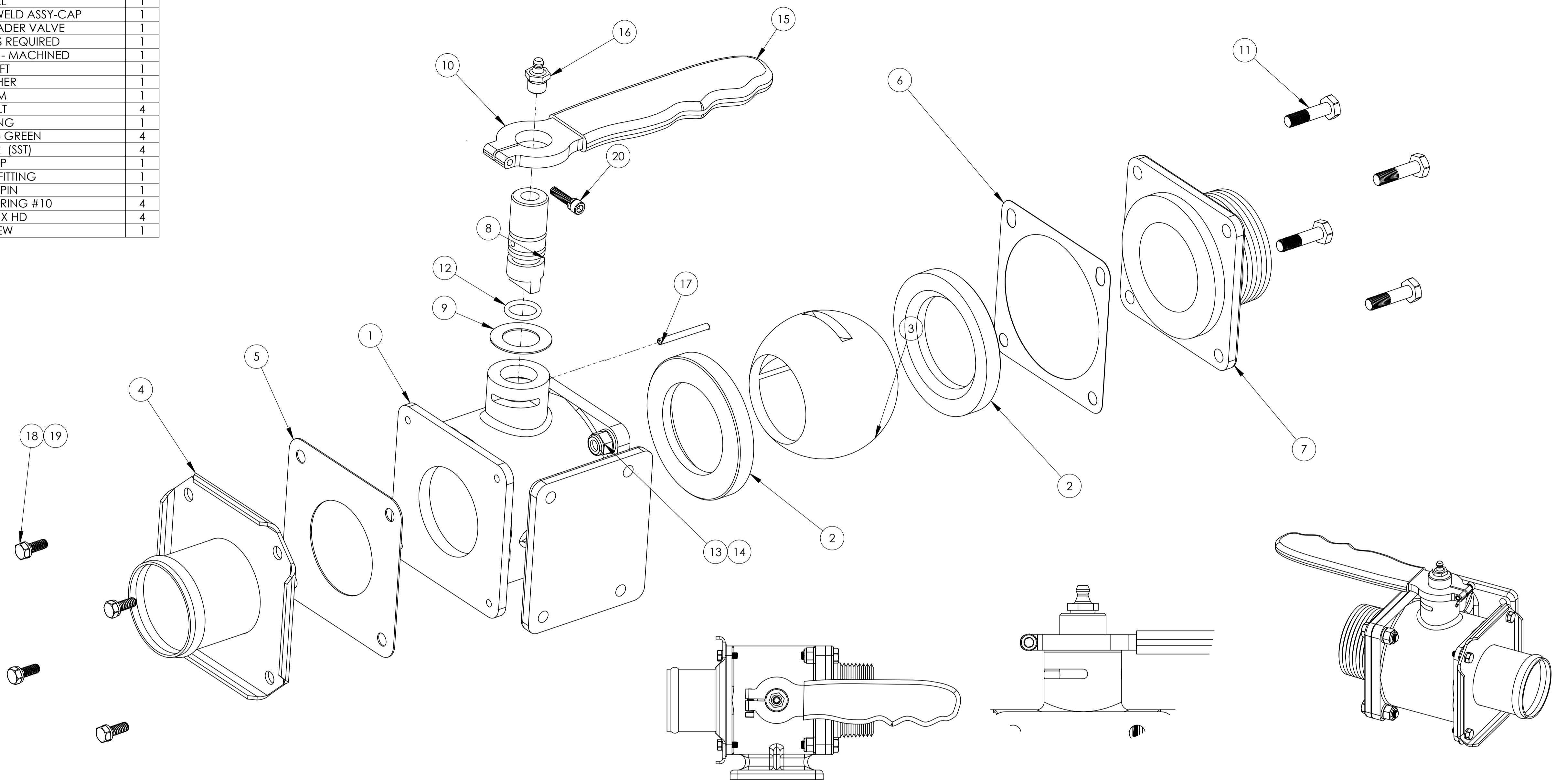


ITEM NO.	PART NO.	DESCRIPTION	QTY
1	42608	SS VALVE BODY - MACHINED	1
2	60075	TEFLON SEAT	2
3	52305	BALL	1
4	56515	HOSE FITTING 2" WELD ASSY-CAP	1
5	60560	GASKET 2" LOADER VALVE	1
6	60047	SHIM QTY. AS REQUIRED	1
7	23368	SS OUTLET CAP - MACHINED	1
8	48118	SHAFT	1
9	60049	WASHER	1
10	52399	ARM	1
11	80112	BOLT	4
12	81603	O RING	1
13	80559	NUT 1/4-28 GREEN	4
14	81230	WASHER (SST)	4
15	82326	GRIP	1
16	86177	GREASE FITTING	1
17	86310	ROLL PIN	1
18	81192	WASHER, SPRING #10	4
19	80007	BOLT, HX HD	4
20	80180	SCREW	1



DETAIL A  
SCALE NTS

DWG NO: **50391** REV: **N**

REV.	E.O.	DESCRIPTION	BY	DATE	APPR'D	DATE
N	11815	CHANGED ITEM NO. 2 TO 60075	RC	7/16/18	CLK	7/20/18
M	11420	DESIGNED FOR SST CAST BODY AND CAP; REMOVED PN 55464, 23387, 54366, 48118, 81623, 81632, 81629, 80778, 80373, 85956; ADDED PN 56515, 60239, 60047, 80559, 81230, 80112, 23368; DELETED NOTE 1	LA	2/22/18	CK	2/26/18
L	1960	ITEM 22 P/N 81192 WAS 80777	PK	10/4/11	JMV	10/4/11
K	1551	REDRAWN D SIZE; REMOVED ITEMS FROM REVISION J; ITEM 4 WAS 44464; ADDED ITEM 23; REMOVED ITEM 27 WAS 13388 QTY 2; REMOVED ITEM 28 WAS 85956 QTY 4	JMV	7/18/11	JMV	7/18/11
J	0787	ADDED 56515 QTY 1, 81230 QTY 4, 80104 QTY 4 & 80559 QTY 4	PK	12/22/10	JMV	12/22/10
H	-	REMOVED ITEM 29 DUE TO REVISION IN ITEM 1; P/N 85956 WAS 85958	JMV	2/23/10	JMV	2/23/10
G	-	ITEM 1 WAS 23407	JMV	11/24/09	JMV	11/24/09
F	-	ITEM 22 WAS 81202 NOW 80777; ITEM 18 WAS 81202 NOW 80778	JMV	10/13/09	JMV	10/13/09
E	-	REDESIGN	JMV	8/20/09	JMV	8/20/09
REV.	E.O.	DESCRIPTION	BY	DATE	APPR'D	DATE

NOTES:  
 1. ARM SHOWN IN OPEN POSITION IN ALL VIEWS.  
 2. WITH VALVE CLOSED, PRESSURISE WITH WATER OVER 65psi AND ENSURE LESS THAN 6 DROPS PER MIN FROM ALL LEAK POINT

**ENGINEERING APPROVED COPY  
FOR MANUFACTURE**

DRAWN: <b>JMV</b> DATE: <b>7/18/11</b>		UNLESS OTHERWISE SPECIFIED: DIMENSIONS ARE IN INCHES TOLERANCES: FRACTIONS ± 1/16 XXX ± .03 XXX ± .010 ANGLE ± 1/2°	 1206 HATTON ROAD, WICHITA FALLS, TX 76302 TITLE: <b>2" SST LOAD VALVE</b>		
CHECKED: <b>RR</b> DATE: <b>10/17/11</b>	ENG APPR:				SIZE: <b>D</b> DWG. NO. <b>50391</b> REV: <b>N</b>
REMOVE ALL BURRS AND SHARP EDGES INTERPRET DRAWING PER ANSI Y14.5M-1992 SURFACE ROUGHNESS PER MIL-STD-10 ALL MACHINED SURFACES NOT TO EXCEED 43 MICRONS PER MIL-STD-10 UNLESS NOTED		THIRD ANGLE PROJECTION	SCALE: NTS	MODEL:	SHEET 1 OF 1