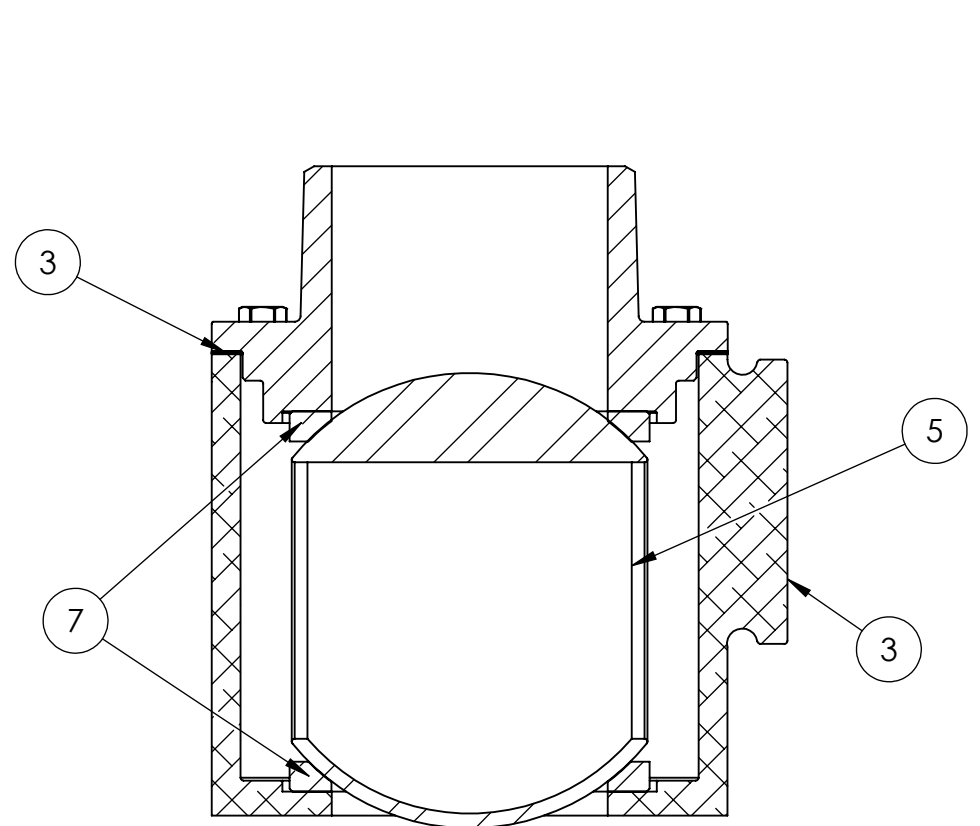
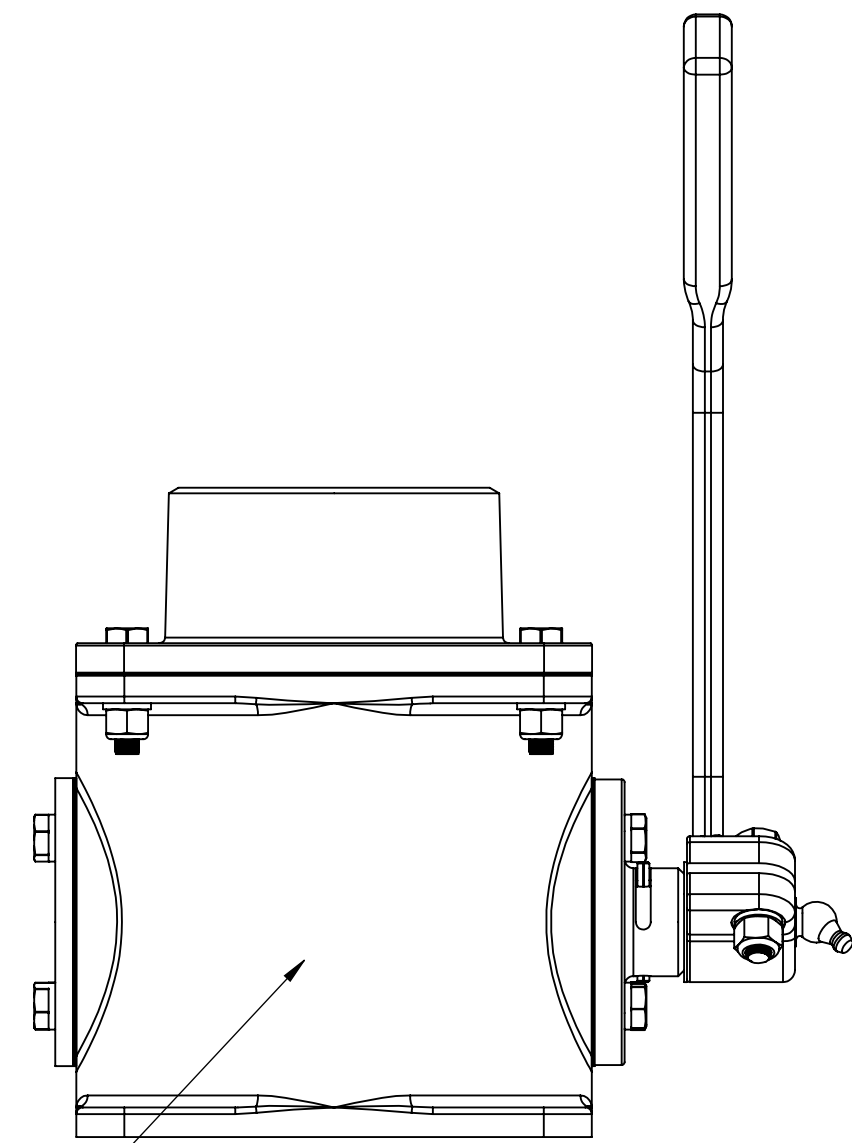
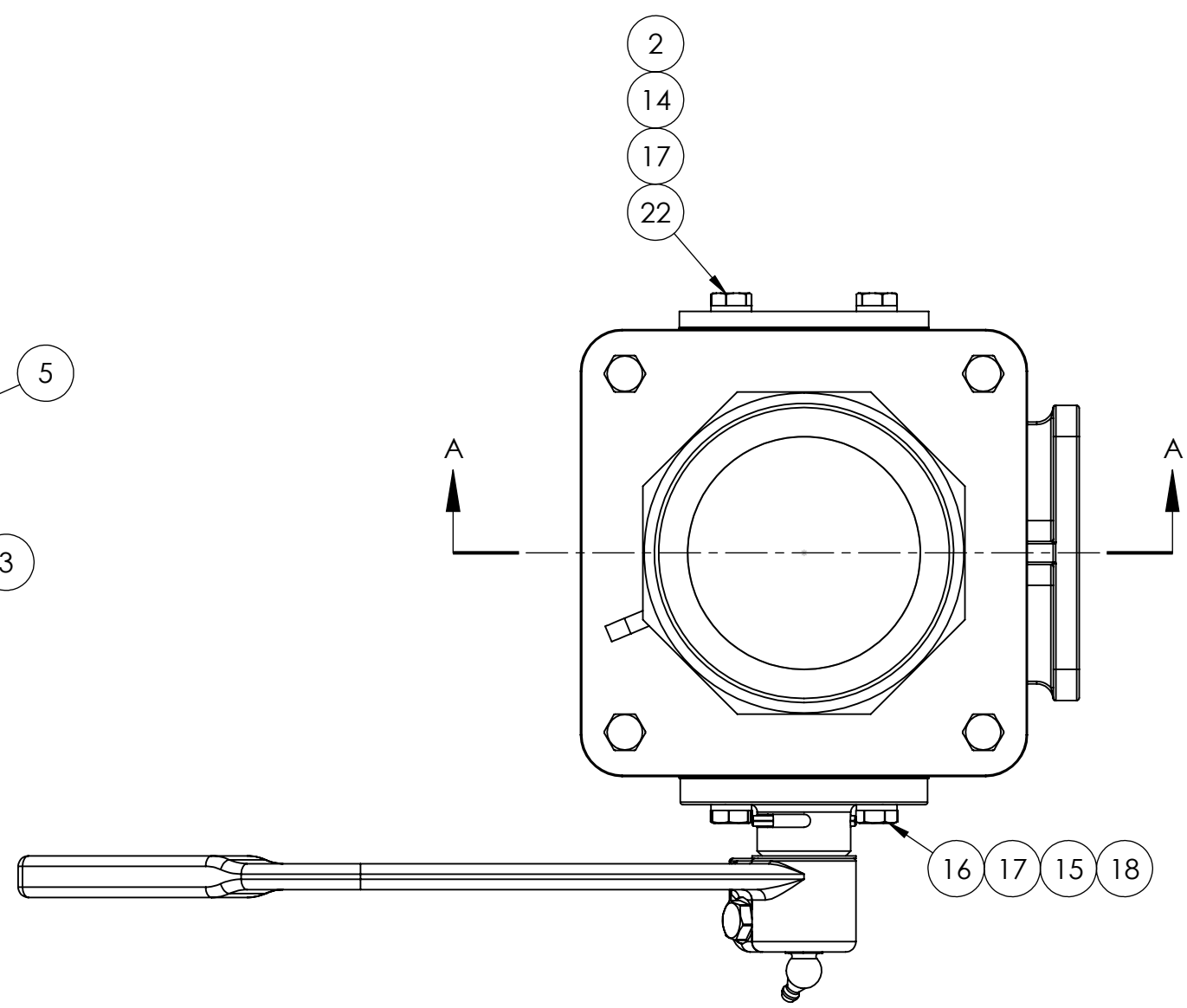


**NOTES (UNLESS OTHERWISE SPECIFIED)**

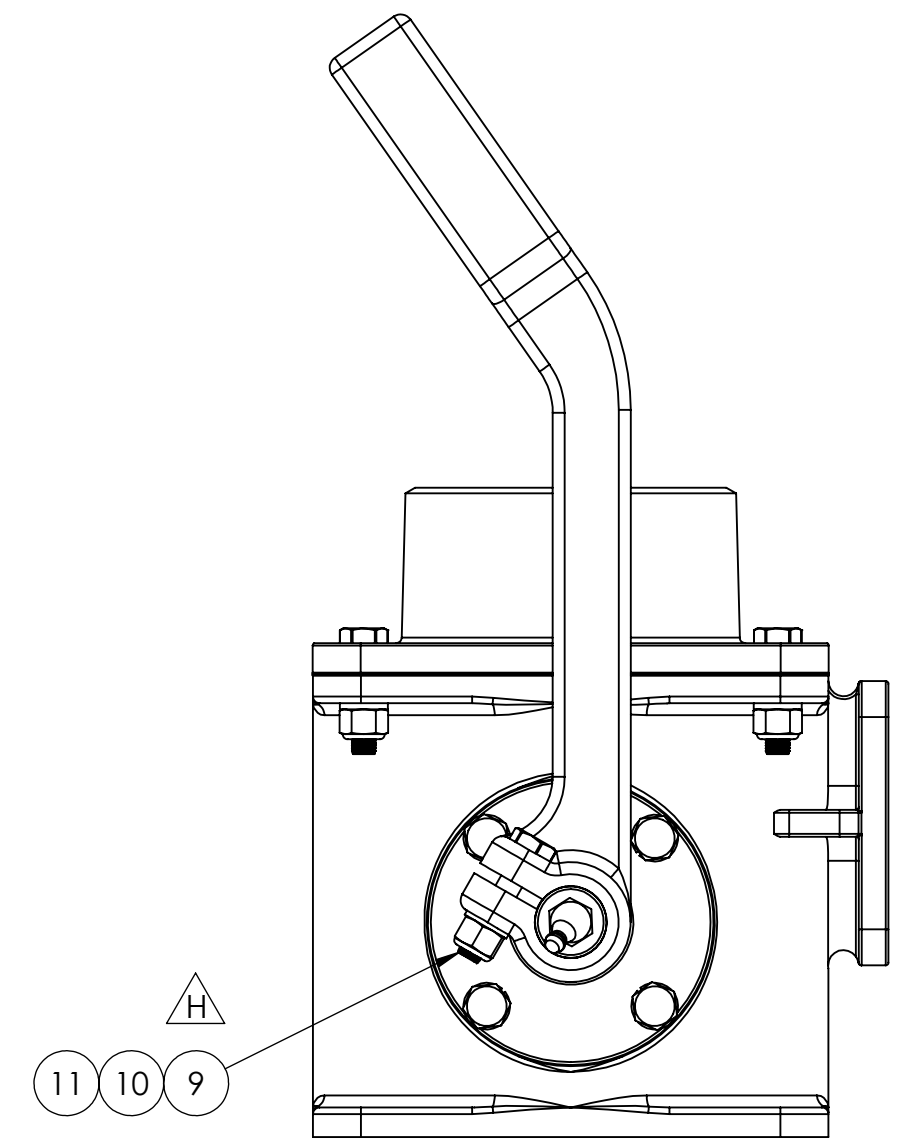
1. ITEMS 8 MAY BE REPLACED WITH AN4C-(A/R), LENGTH AS REQ'D.
2. FOR SEAL KIT, SEE DWG. 54532.
3. WITH VALVE CLOSED, PRESSURISE WITH WATER AT 5 TO 10psi AND ENSURE LESS THAN 6 DROPS PER MIN FROM ALL LEAK POINTS.
4. PART MUST BE IDENTIFIED PER DWG. NO. 60321.
5. COAT SURFACE OF ITEM 7 WHICH COMES INTO CONTACT WITH ITEM 5 WITH "EP 2" MULTI PURPOSE GREASE OR MOBILE MOBILITH SCH SYNTHETIC BEARING GREASE.
6. APPLY PERMATEX ANT-SIEZE LUBRICANT 80078 OR LOCTITE42-8029 TO THREADED PARTS UNLESS NOTED.
7. APPLY PTFE TAPE OR EQUIV.
8. ITEM #21 PN-85035 TO BE SHIPPED WITH VALVE (DO NOT ASSEMBLY)



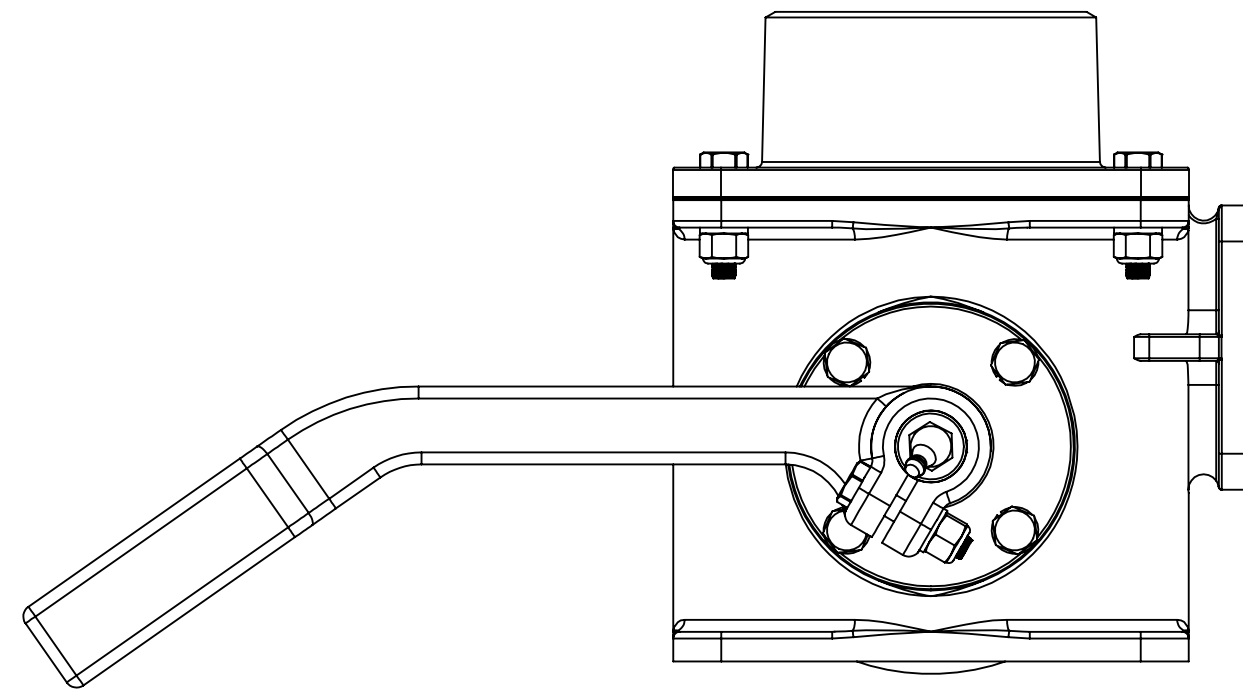
SECTION A-A



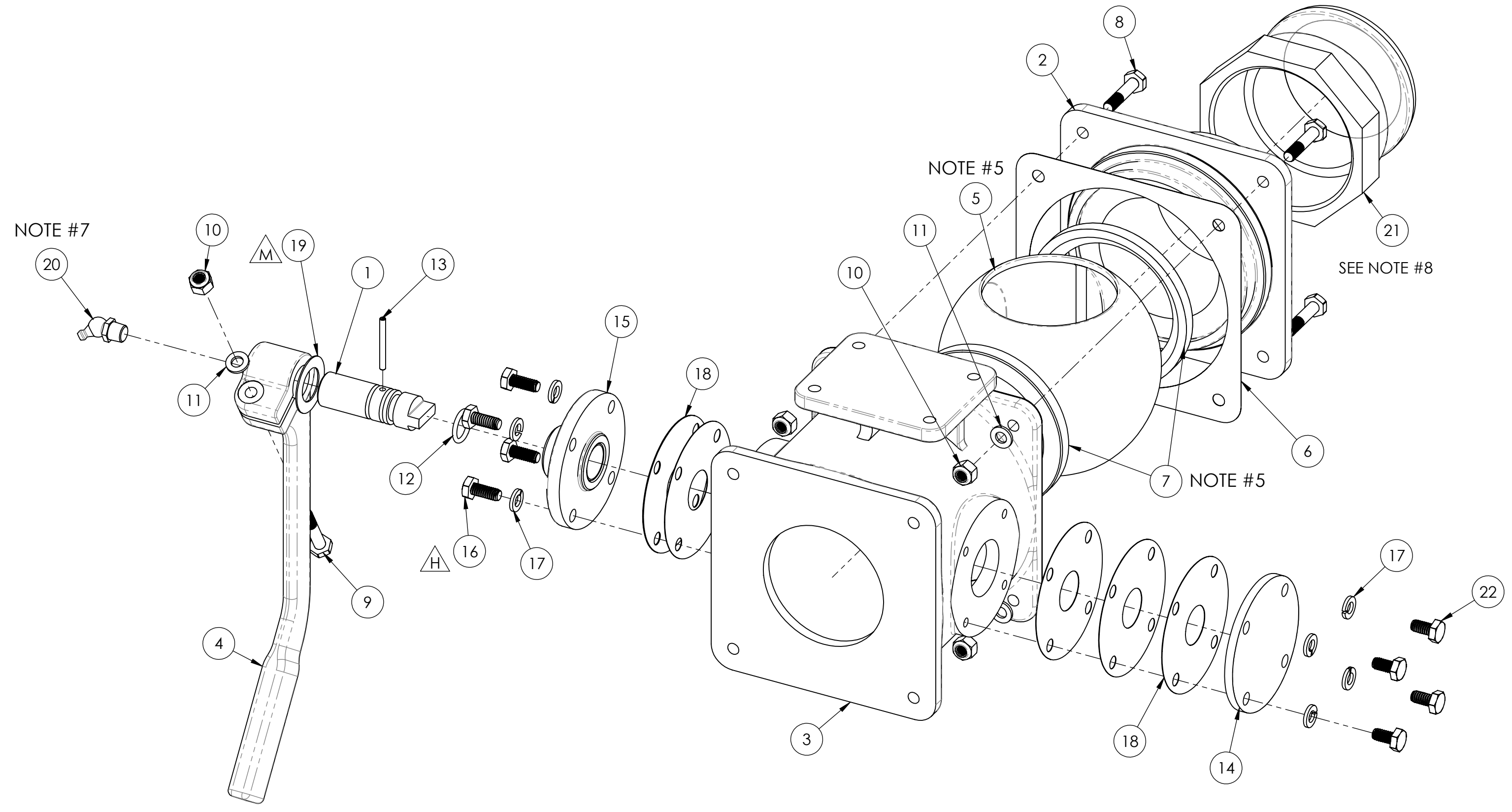
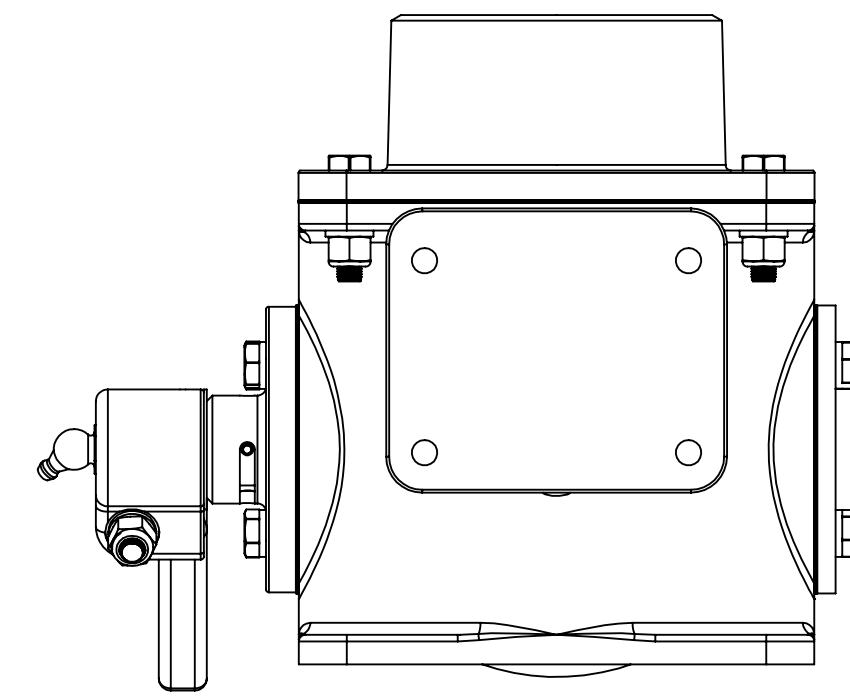
AFFIX IDENTIFICATION IN THIS LOCATION PER NOTE 4



OPEN POSITION



CLOSED POSITION



ITEM NO.	PART NO.	NO. REQD.	DESCRIPTION	SIZE	SPEC.	NO. REQD.	NEXT ASSEMBLY	FINAL ASSEMBLY
22	MS35307-303	4	BOLT HX HD (85665)					
21	G300-A-AL	1	ADAPTER, MOTION INDUSTRIES, INC. (85035)		COMMERCIAL			
20	MS15003-4	1	GREASE FITTING (86181)					
19	60049	1	WASHER - CHAFING (BLACK FIBER)					
18	60767	6	GASKET- HANDLE MOUNT					
17	AN935-C416	8	LOCK WASHER (81195)					
16	MS35307-305	4	BOLT HX HD (85653)					
15	44366	1	CAP-HANDLE MOUNT					
14	14583	1	PLUG					
13	MS39086-147	1	ROLL PIN (86310)					
12	AN6227-11	1	O-RING (81603)					
11	AN960C416	5	FLAT WASHER (81230)					
10	AN365C-428	5	LOCK NUT (80559)					
9	AN4C-12A	1	BOLT HX HD (80116)					
8	AN4C-11A	4	BOLT HX HEAD (80114)					
7	60803	2	SEAL					
6	60762	A/R	GASKET SHIM					
5	57015	1	BALL					
4	42603	1	HANDLE					
3	43297	1	BODY					
2	42296	1	CAP-MACHINED, 3"-8NPT X 2-7/8"					
1	40118	1	SHAFT					
			DESCRIPTION	SIZE	SPEC.	NO. REQD.	NEXT ASSEMBLY	FINAL ASSEMBLY
			MATERIAL					

REV.	EO#	DESCRIPTION	BY	DATE	APPRD	DAE
M	9607	ADDED BALLOON #19	RC	12/12/2016	CLK	12/13/2016
L	8821	NEW TITLE BLOCK	RC	6/7/2016	CLK	6/9/2016
K	6018	ITEM #20 PN-86181 WAS 86177	PK	10/31/2014	JMV	11/2/2014
J	5536	REVISED NOTES, ITEM #21 PN-85035 SEE NOTE #8	PK	6/12/14	JMV	6/13/14
H	2416	ADDED ITEM #9 P/N 80116 QTY 1, #8 P/N 80114 QTY 4 WAS 5	PK	1/17/2012	JMV	1/19/2012
G	1108	ADDED NOTE #1	JMV	4/6/2011	JMV	4/8/2011
F	427	CORRECTED VIEWS ORIENTATION, DEL. ITEM 9 (80116) QTY. 1X, ITEMS: #10 PN-80559 WAS 80560, #20 PN-86177 WAS 81677, #22 PN-85665 WAS 85666, #6 QTY. 3 WAS 1, #11 QTY. 5 WAS 4, #17 QTY. 8 WAS 9 & 18 QTY. 6 WAS 2, REDRAWN IN SOLIDWORKS	PK	8/25/2010	JMV	8/26/2010

**REVISIONS**

ENGINEERING APPROVED COPY FOR MANUFACTURE

DRAWN: MARSELOS  
 CHECKED: RR  
 ENG APPR: CLK  
 DATE: 8/3/94  
 DATE: 12/12/16  
 DATE: 12/13/16

UNLESS OTHERWISE SPECIFIED:  
 DIMENSIONS ARE IN INCHES  
 TOLERANCES:  
 FRACTIONS ±1/16  
 DECIMALS ±.03  
 ANGLES ±.010°  
 HOLE DIA. ±.004  
 .0135 - .125 DIA. +.004 - .001  
 .1260 - .250 DIA. +.005 - .001  
 .2510 - .500 DIA. +.006 - .001  
 .5010 - .750 DIA. +.008 - .001  
 .7510 - 1.000 DIA. +.010 - .001

**TRANS LAND**  
 1206 HATTON ROAD, WICHITA FALLS, TX 76302  
 TITLE: VALVE ASSEMBLY R/H 3" LOADER VALVE  
 SIZE: C DWG. NO. 24446  
 SCALE: NTS MODEL: SHEET 1 OF 1

REV. 24446