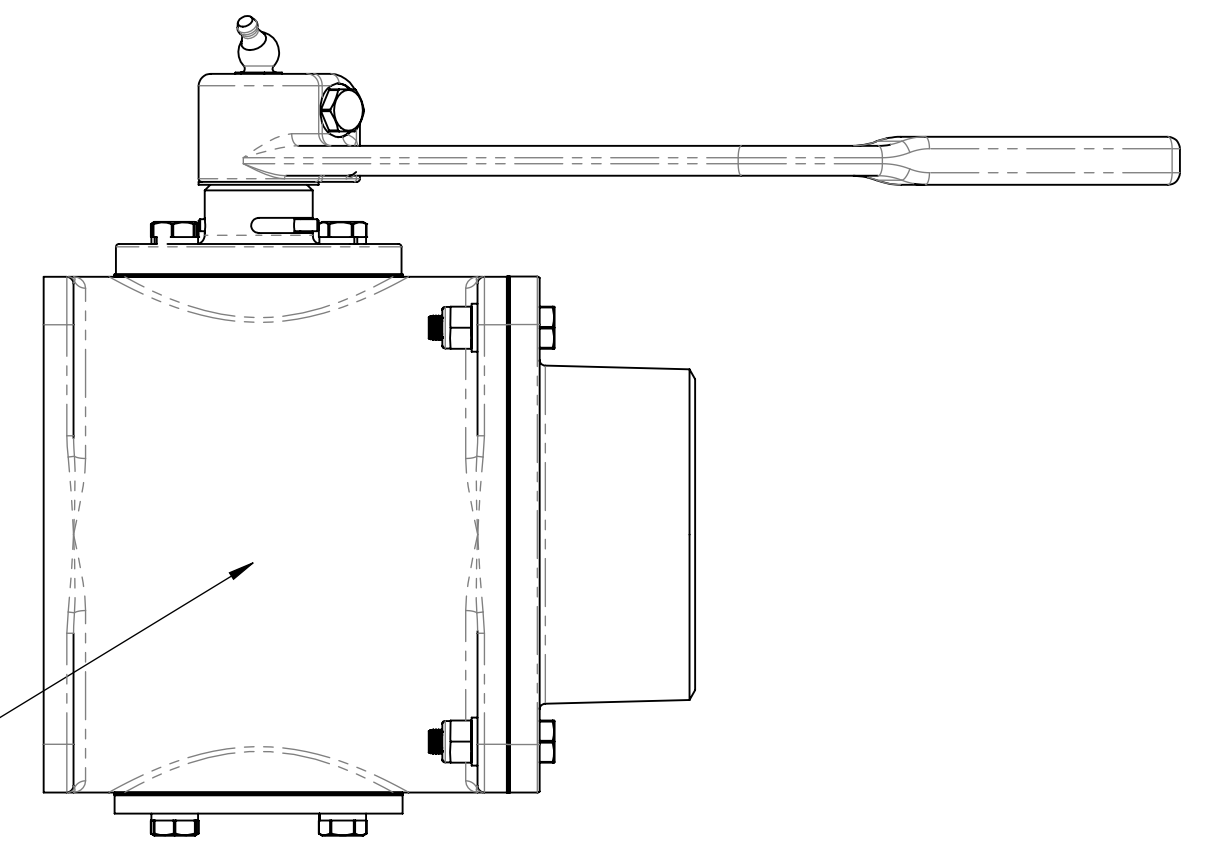
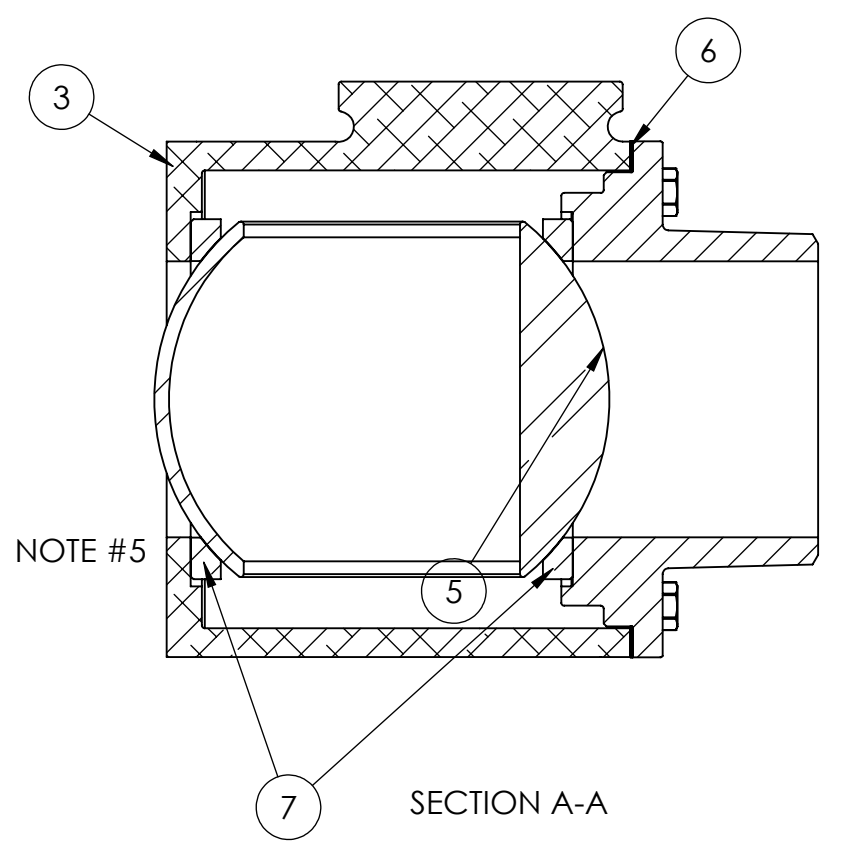
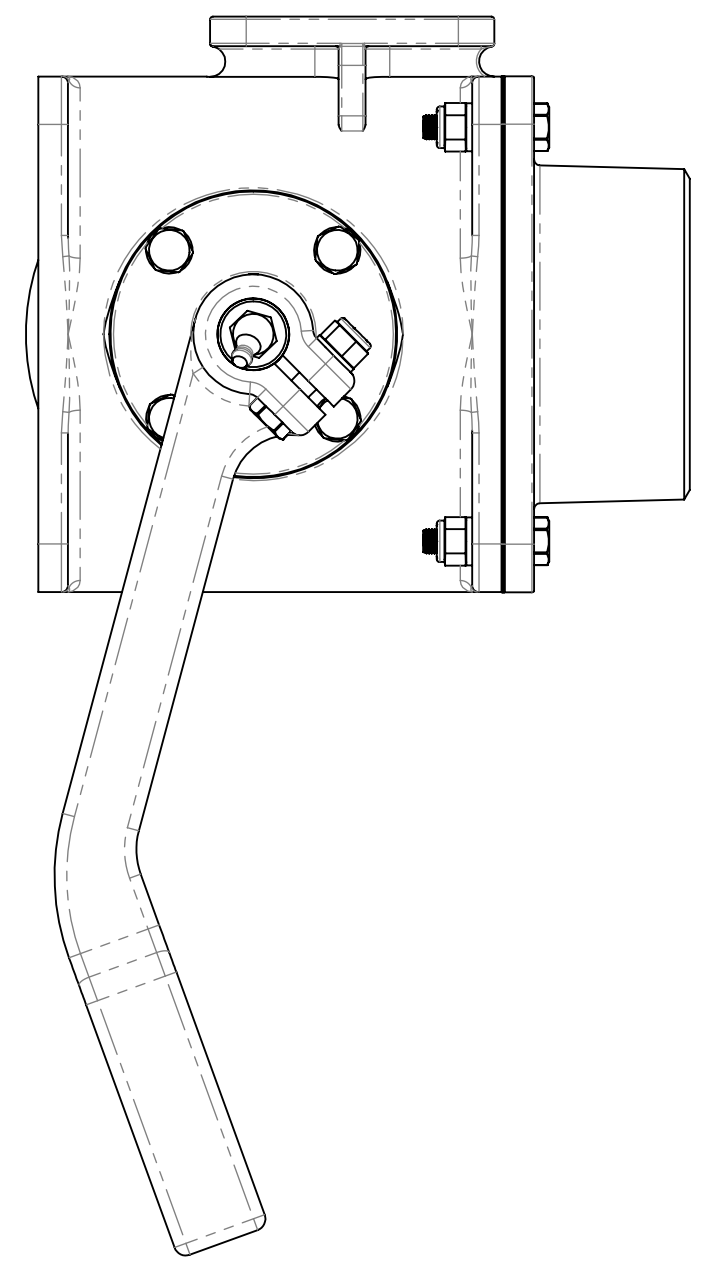
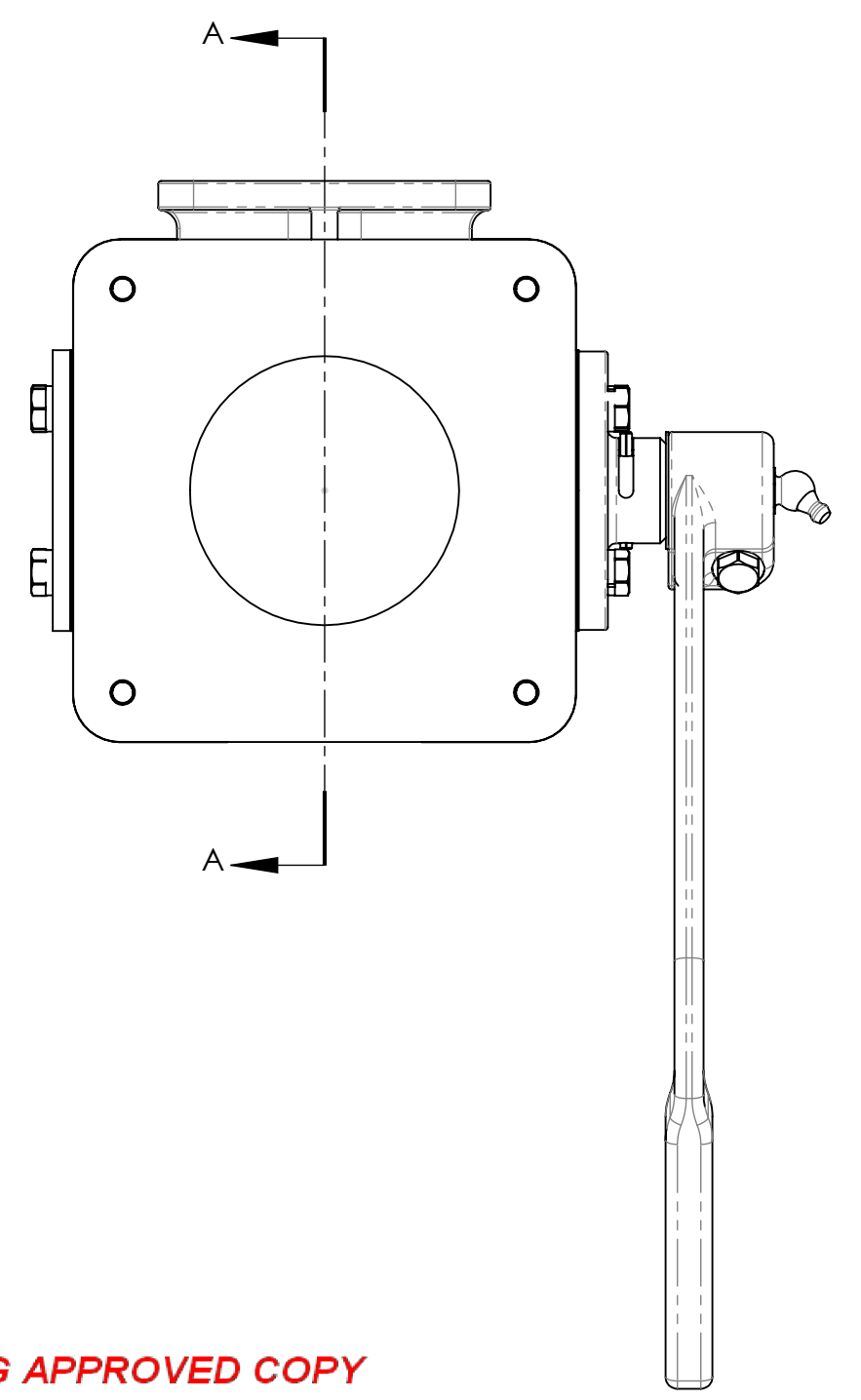
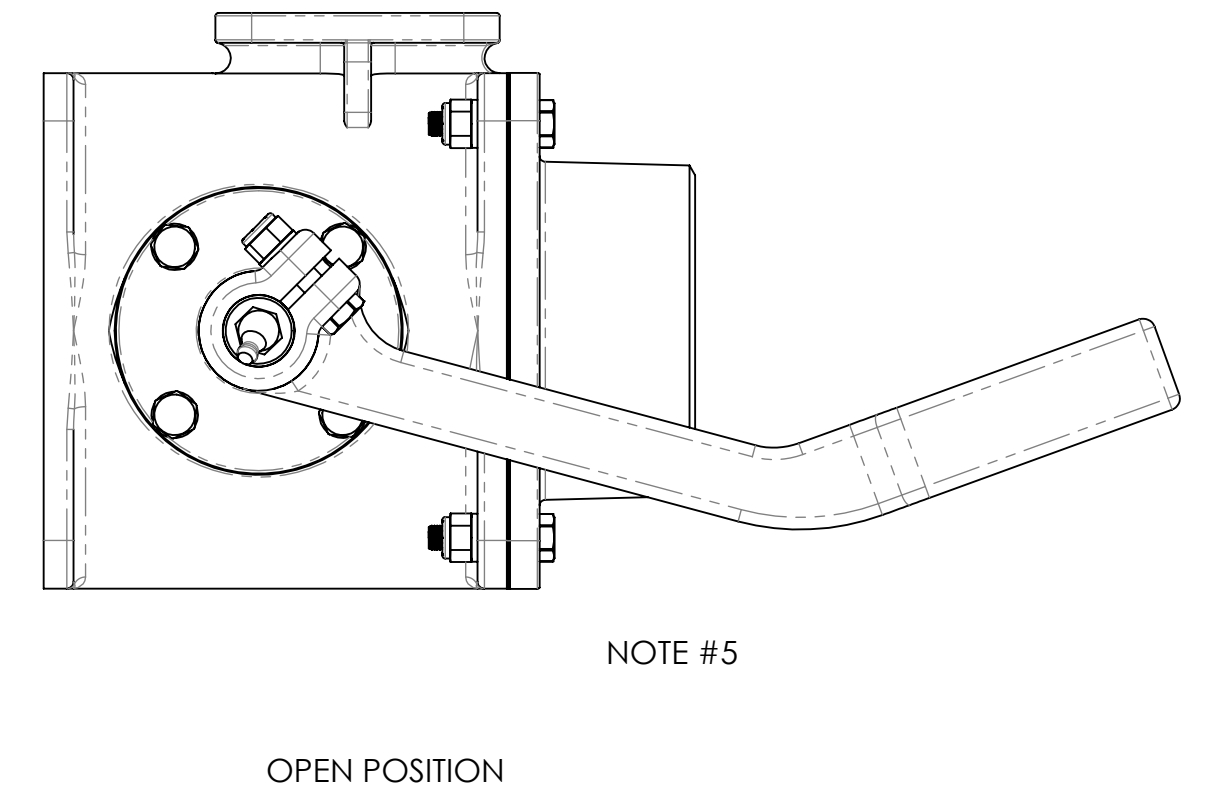
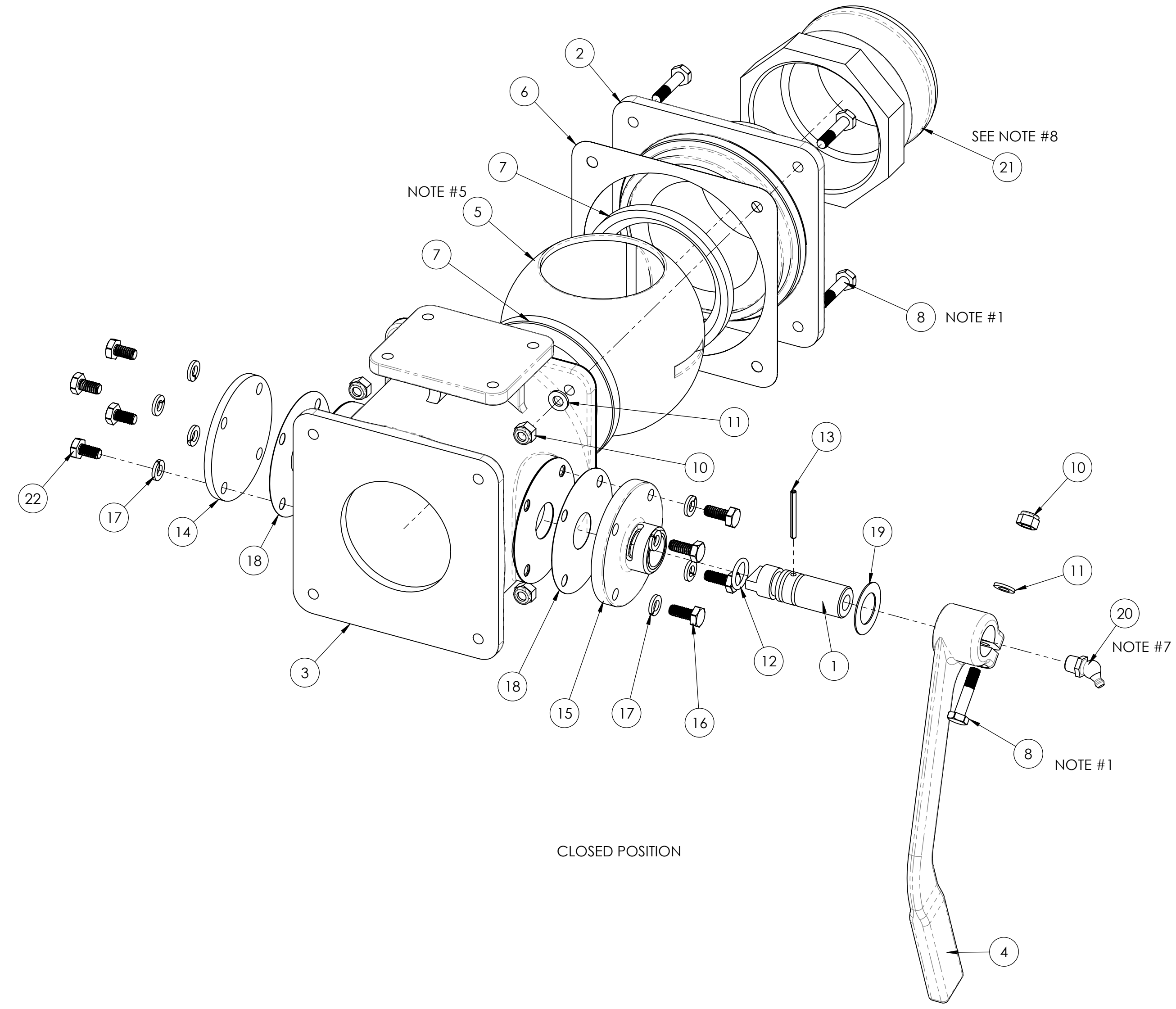
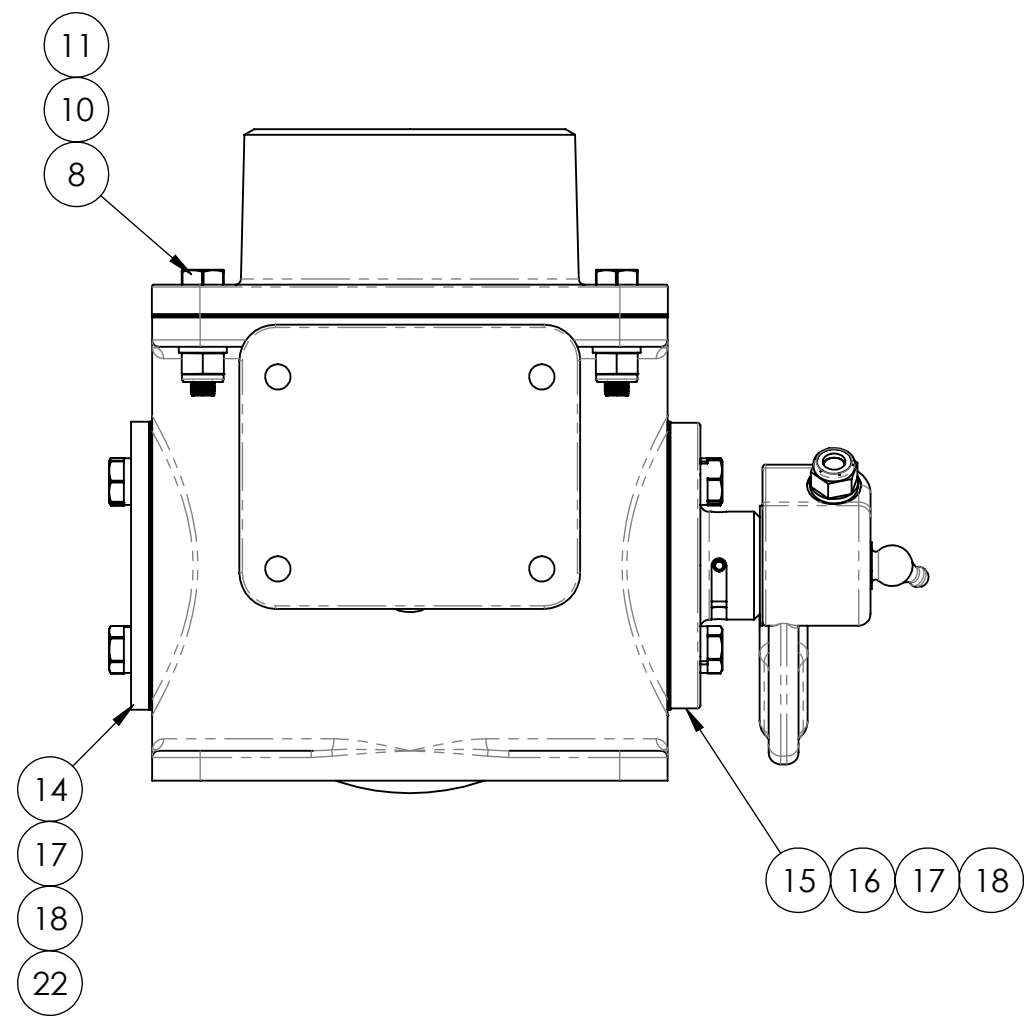


**NOTES (UNLESS OTHERWISE SPECIFIED)**

1. ITEMS 8 MAY BE REPLACED WITH AN4C-(A/R)A, LENGTH AS REQ'D.
2. FOR SEAL KIT, SEE DWG. 54532.
3. WITH VALVE CLOSED, PRESSURISE WITH WATER AT 5 TO 10psi AND ENSURE LESS THAN 6 DROPS PER MIN FROM ALL LEAK POINTS.
4. PART MUST BE IDENTIFIED PER DWG. NO. 60321.
5. COAT SURFACE OF ITEM 7 WHICH COMES INTO CONTACT WITH ITEM 5 WITH "EP 2" MULTI PURPOSE GREASE OR MOBILE MOBILITH SCH SYNTHETIC BEARING GREASE.
6. APPLY PERMATEX ANTI-SIEZE LUBRICANT 80078 OR LOCTITE442-8029 TO THREADED PARTS UNLESS NOTED.
7. APPLY PTFE TAPE OR EQUIV.
8. ITEM #21 PN-85035 TO BE SHIPPED WITH VALVE (DO NOT ASSEMBLY)

ITEM NO.	PART NUMBER	DESCRIPTION	QTY.	NOTES
1	40118	SHAFT	1	
2	42296	CAP-MACHINED, 3"-8 NPT x 2-7/8"	1	
3	43297	BODY	1	
4	42603	HANDLE	1	
5	57015	BALL	1	
6	60762	GASKET (Shim) QTY = A/R		
7	60803	SEAL	2	
8	80114	BOLT HX HEAD AN4C-11A	5	
9	-----	DELETED	1	
10	80559	LOCK NUT AN365C-428A	5	
11	81230	FLAT WASHER AN960C416	5	
12	81603	O RING	1	
13	86310	ROLL PIN	1	
14	14583	PLUG	1	
15	44366	CAP-HANDLE MOUNT	1	
16	85653	BOLT HX HEAD SS	4	
17	81195	SPLIT L'K WASHER AN935C-416	8	
18	60767	GASKET - HANDLE MOUNT	6	
19	60049	WASHER	1	
20	86181	GREASE FITTING 1/8 NPT 45-deg	1	
21	85035	ADAPTER	1	NOTE #8
22	85665	BOLT HX HEAD SS	4	



AFFIX IDENTIFICATION IN THIS LOCATION PER NOTE 4

**ENGINEERING APPROVED COPY FOR MANUFACTURE**

REV.	EO#	DESCRIPTION	DATE	BY
L	6017	ITEM #20 PN-86181 WAS 86177, CORRECTED GEOM. OF THE BALL #5	10/31/2014	PK
k	5535	ADDED NOTE #8, ITEM #1 TO BE SHIPPED WITH VALVE	6/12/2014	PK
J	05096	CHANGED HANDLE POSITION, SHEET FORMAT WAS "B" SIZE, REVISED NOTES.	1/3/2014	PK
H	01107	ADDED NOTE #1	4/6/2011	JMV
G	00427	E.O. 427: CORRECTED VIEWS ORIENTATION, DEL. ITEM 9 (80116) QTY. 1X, ITEMS: #10 PN-80559 WAS 80560, #20 PN-86177 WAS 81677, #22 PN-85665 WAS 85666, #6 QTY. 3 WAS 1, #11 QTY. 5 WAS 4, #17 QTY. 8 WAS 9 & 18 QTY. 6 WAS 2. REDRAWN IN SOLIDWORKS	8/24/2010	PK

NO. REQD.	NEXT ASSEMBLY	NAME	DATE	UNLESS OTHERWISE SPECIFIED: DIMENSIONS ARE IN INCHES
		MARSELOS	8-03-94	TOLERANCES: FRACTIONS ±1/16 XX ±.03 XXX ±0.01 ANGLE ±1/2"
CHECKED	RR	11-13-14		HOLE DIA: .0135 - .125 DIA. +.004 -.001 .1260 - .250 DIA. +.005 -.001 .2510 - .500 DIA. +.006 -.001 .5010 - .750 DIA. +.008 -.001 .7510 - 1.000 DIA. +.010 -.001
ENG APPR.				REMOVE ALL BURRS AND SHARP EDGES
FINAL ASSEMBLY	SEE BOM			INTERPRET DRAWING PER ANSI Y14.5M-1982 SURFACE ROUGHNESS PER MIL-STD-10 ALL MACHINED SURFACES NOT TO EXCEED .63 MICRONS PER MIL-STD-10 UNLESS NOTED
FINISH		SolidWorks		THIRD ANGLE PROJECTION

**TRANSLAND**

**VALVE ASSEMBLY L/H 3" LOADER VALVE**

SCALE: 1:2 WEIGHT: SHEET 1 OF 1

REV L

DWG. NO. **24445**

24445