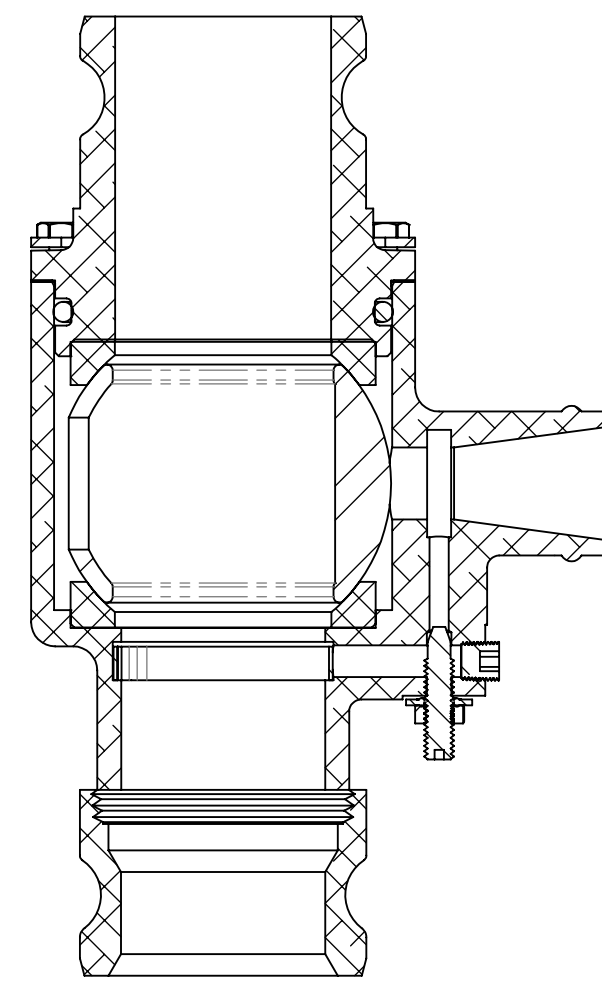
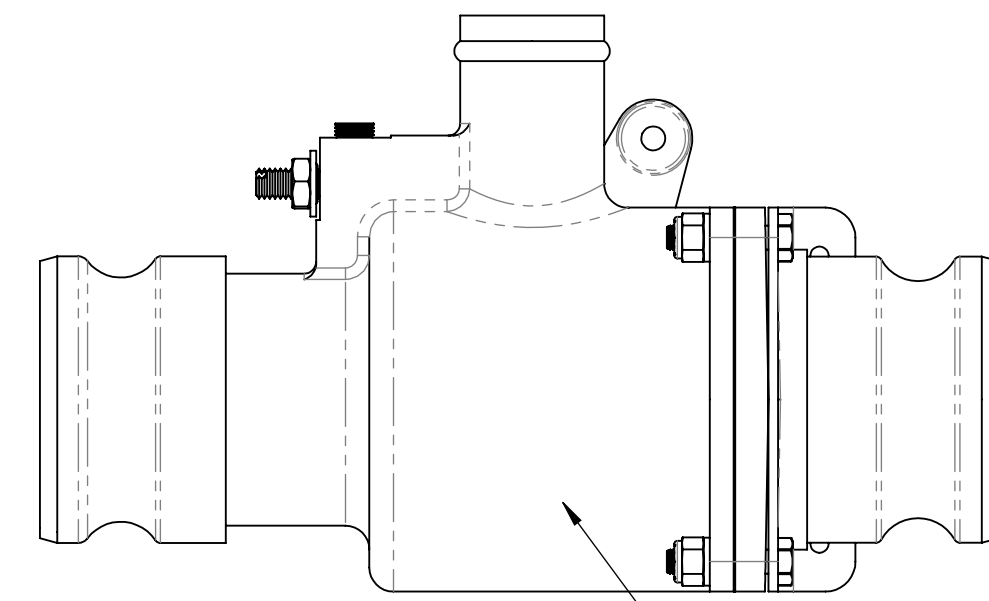
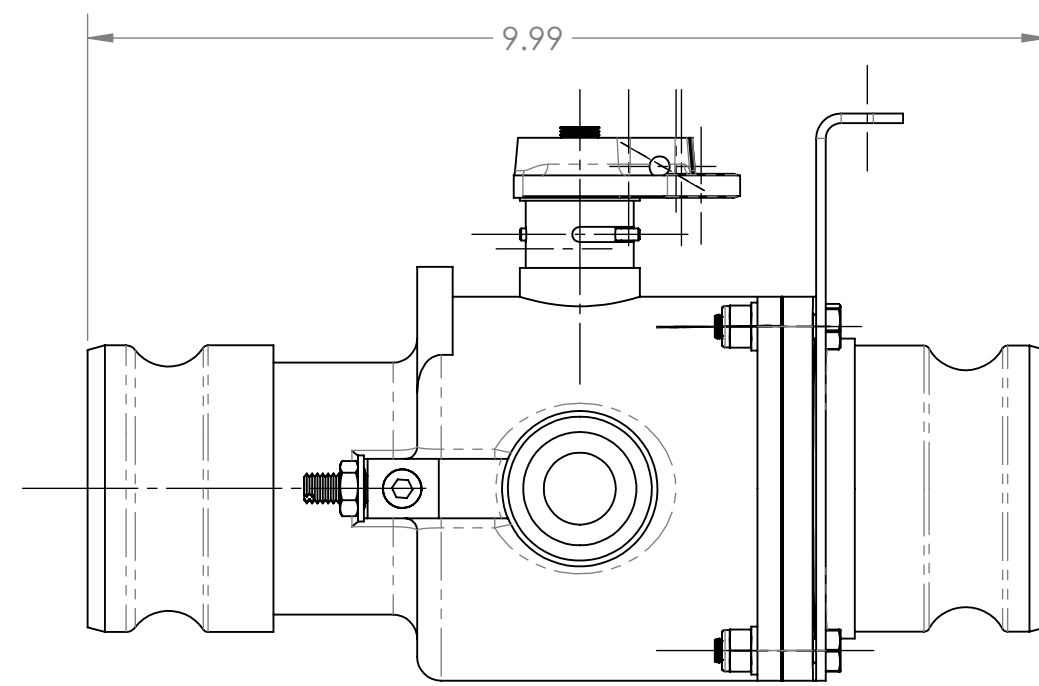
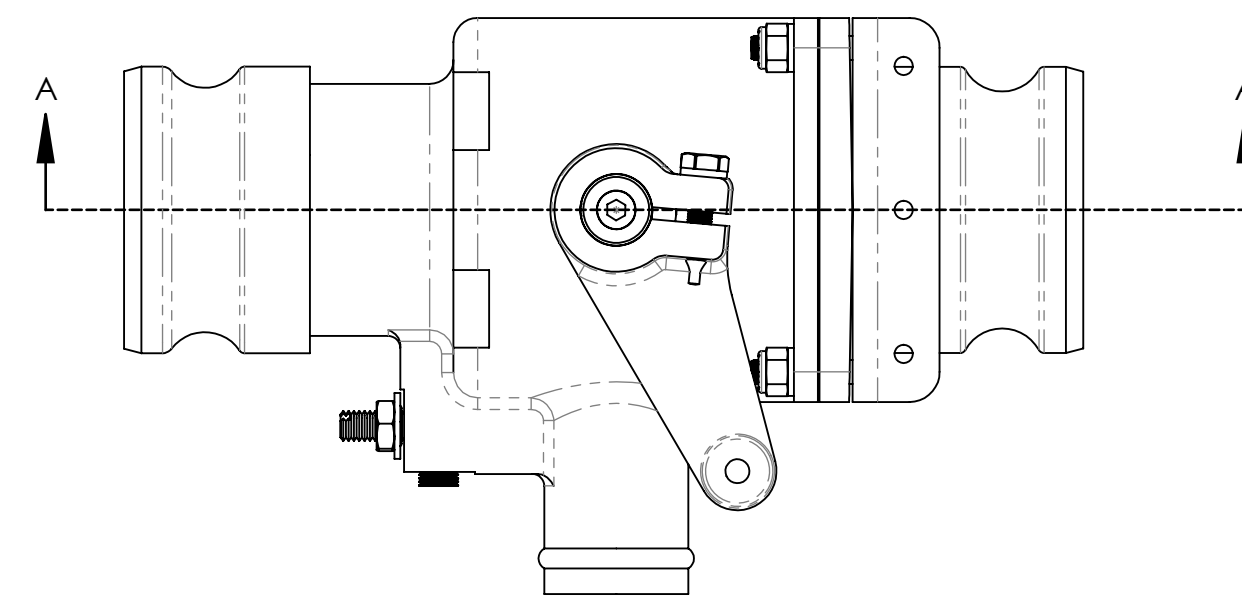
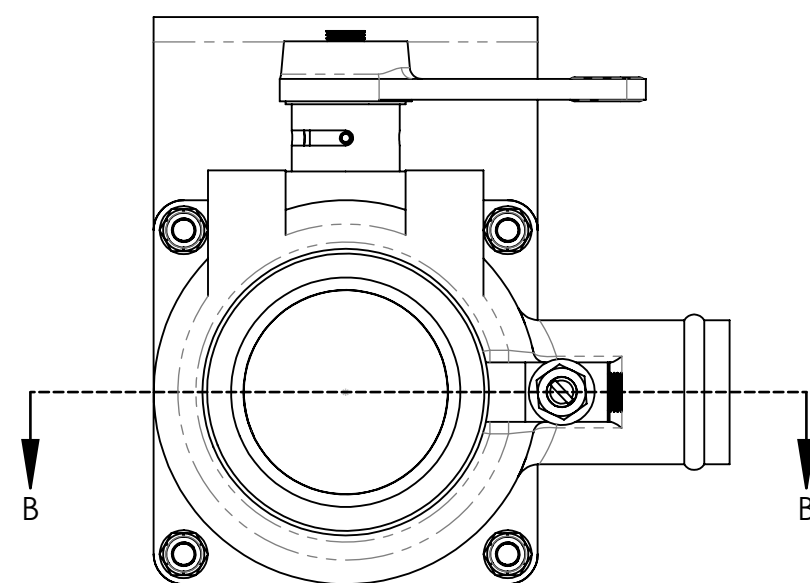


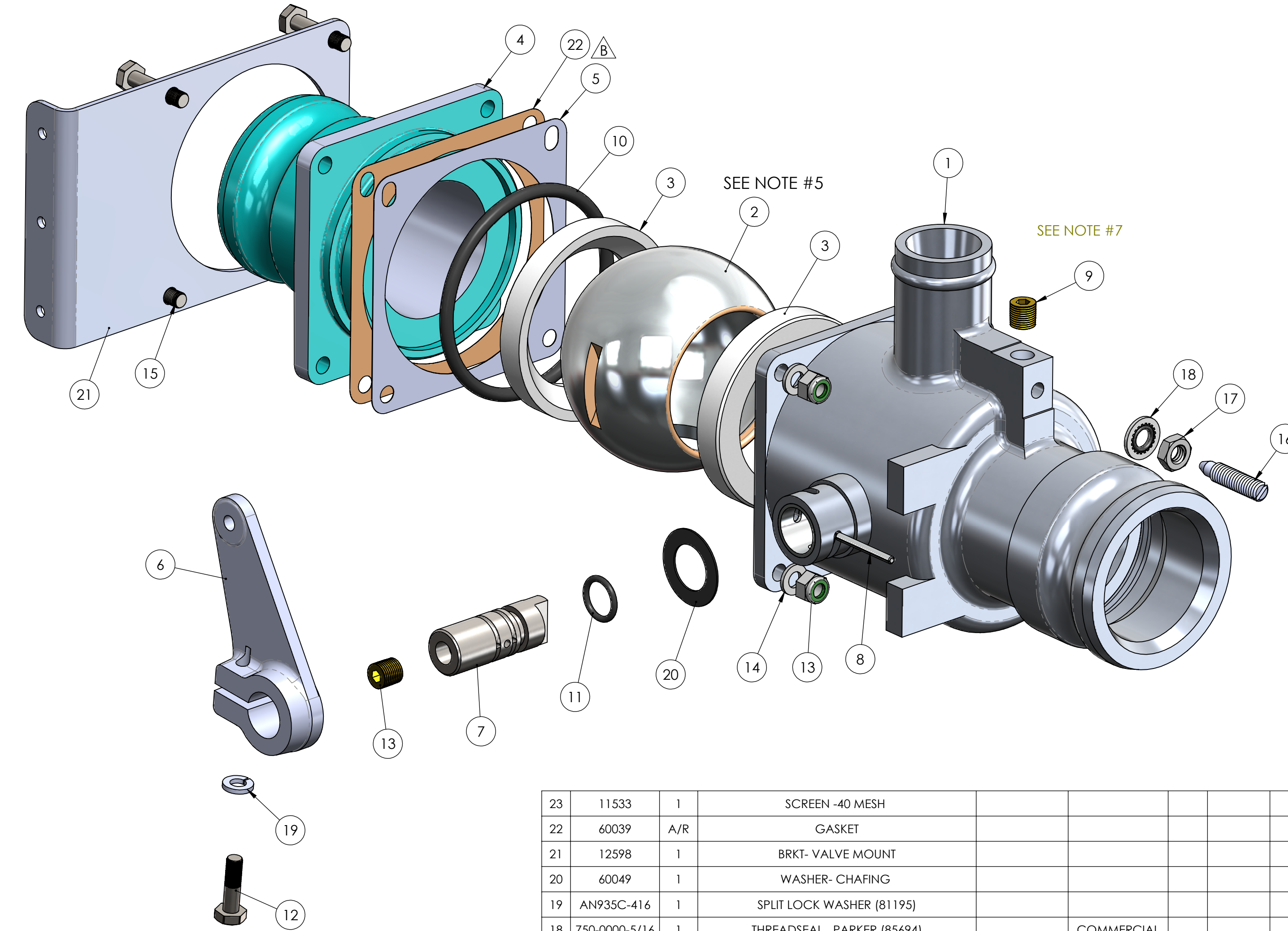
SECTION A-A



SECTION B-B



AFFIX IDENTIFICATION
IN THIS LOCATION
PER NOTE 4



NOTES (UNLESS OTHERWISE SPECIFIED)

1. SEAL KIT 54508
2. HARDWARE MAY BE SUBSTITUTED FOR LENGTH PER AC43.13, CHAPTER 7, SECTION 3, PARAGRAPH 37 AND SECTION 4 PARAGRAPH 64.
3. WITH VALVE CLOSED, PRESSURE WITH WATER OVER 60 PSI AND ENSURE LESS THAN 6 DROPS PER MINUTE FROM ALL LEAK POINTS.
4. PART MUST BE IDENTIFIED PER DRAWING 60321.
5. COAT SURFACE OF ITEM 3 WHICH COMES INTO CONTACT WITH ITEM 2 WITH MOBILE MOBILITH SCH SYNTHETIC BEARING GREASE.
6. APPLY PERMATEX ANT-SIEZE LUBRICANT 80078 OR LOCTITE 442-8029 TO THREADED PARTS, UNLESS NOTES
7. TORQUE PER : AC43.13-1B CH 7, SECTION 3, PARAGRAPH 40, TABLE 7-1.
8. SWAGELOK PTFE FREE THREAD SEALANT, OR ARGCO SUPERDOPE ANEROBIC THREAD SEALANT; APPLY PER MANUFACTURER'S INSTRUCTIONS.
9. SPOT WELDING TO BE COMPLETED PER DOC. TQ38.

ITEM NO.	PART NO.	NO. REQD	DESCRIPTION	SIZE	SPEC.	NO. REQD	NEXT ASSEMBLY	FINAL ASSEMBLY
23	11533	1	SCREEN -40 MESH					
22	60039	A/R	GASKET					
21	12598	1	BRKT- VALVE MOUNT					
20	60049	1	WASHER- CHAFING					
19	AN935C-416	1	SPLIT LOCK WASHER (81195)					
18	750-0000-5/16	1	THREADSEAL , PARKER (85694)				COMMERCIAL	
17	AN316C-5R	1	JAM NUT, HEX (80536)					
16	40119	1	SCREW-ADJUST					
15	AN4C-11A	4	BOLT, HEX HEAD (80114)					
14	AN960C-416	4	WASHER (81230)					
13	AN365-428A	4	NUT, LOCK (80559)					
12	AN4C-7A	1	BOLT, HEX HEAD (80110)					
11	M83248/1-113	1	O-RING (VITON) (81603)					
10	AS568A-338	1	O-RING (81633)					
9	AN932-20	2	PLUG 1/8 NPT (BRASS) (81194)					
8	MS39086-147	1	COILED PIN (86310)					
7	48118	1	SHAFT SS, SPRAY VALVE					
6	40125	1	ARM-MACHINED, VALVE					
5	60040	A/R	GASKET					
4	42598	1	QD END MACHINED					
3	60037	2	SEAL					
2	51010	1	BALL-MACHINED					
1	22588	1	VALVE BODY WELDMENT					

MODELS	
AT-602	AT-802
AT-802A	

TABLE 1: MODEL ELIGIBILITY

REV.	EO#	DESCRIPTION	BY	DATE	APPRD	DATE
C	11321	UPDATE SHEET FORMAT, BOM AND NOTES. ADDED TABLE 1	CAS	1/25/18	clk	3/21/18
B	5595	ADDED ITEM 22	PK	7/10/14	LT.	7/10/14
A	5563	REVISED NOTE #6 AND NOTE #7	PK	6/30/14	LT.	6/30/14
NC	5006	INITIAL RELEASE	PK	11/27/13	LT.	

NAME	DATE
DRAWN PK	11/27/13
CHECKED RR	11/28/13
ENG APPR. CLK	11/28/13

UNLESS OTHERWISE SPECIFIED:
DIMENSIONS ARE IN INCHES
TOLERANCES:
FRACTIONS ±1/16
DECIMALS ±.03
XXX ±0.01
ANGLE ±1/2°

HOLE DIA.:
.015 - .125 DIA. +.004 -.001
.126 - .250 DIA. +.005 -.001
.251 - .500 DIA. +.006 -.001
.501 - .750 DIA. +.008 -.001
.751 - 1.000 DIA. +.010 -.001

REMOVE ALL BURRS AND SHARP EDGES
INTERPRET DRAWING PER ANSI Y14.5M-1982
SURFACE ROUGHNESS PER MIL-STD-10
ALL MACHINED SURFACES NOT TO EXCEED .63 MICRONS PER MIL-STD-10 UNLESS NOTED

SolidWorks

TRANSLAND
1206 HATTON ROAD, WICHITA FALLS, TX 76302

TITLE: ASSEMBLY
2-1/2" SPRAY VALVE Q.D. BOTH ENDS

SIZE DWG. NO. **20385Q**

SCALE: NTS MODEL: SEE TABLE#1 SHEET 1 OF 1