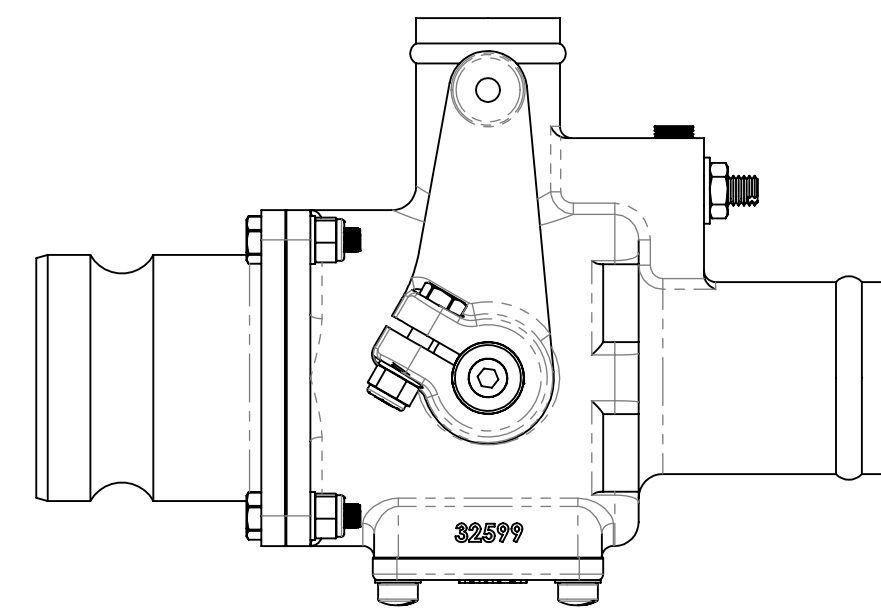
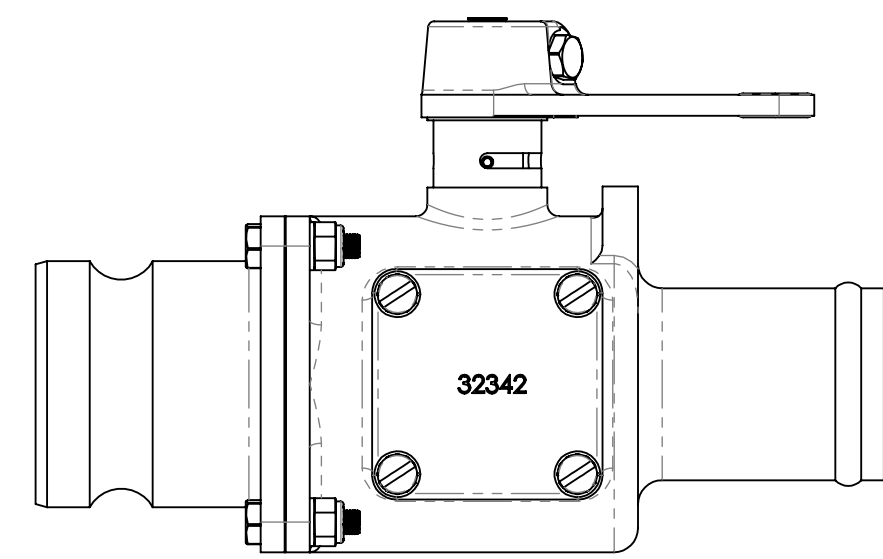


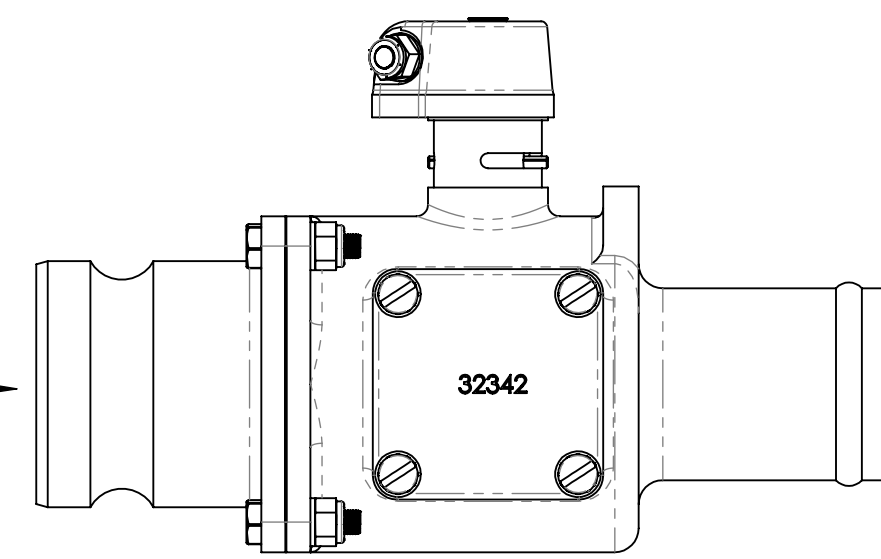
VALVE CLOSED



VALVE OPEN

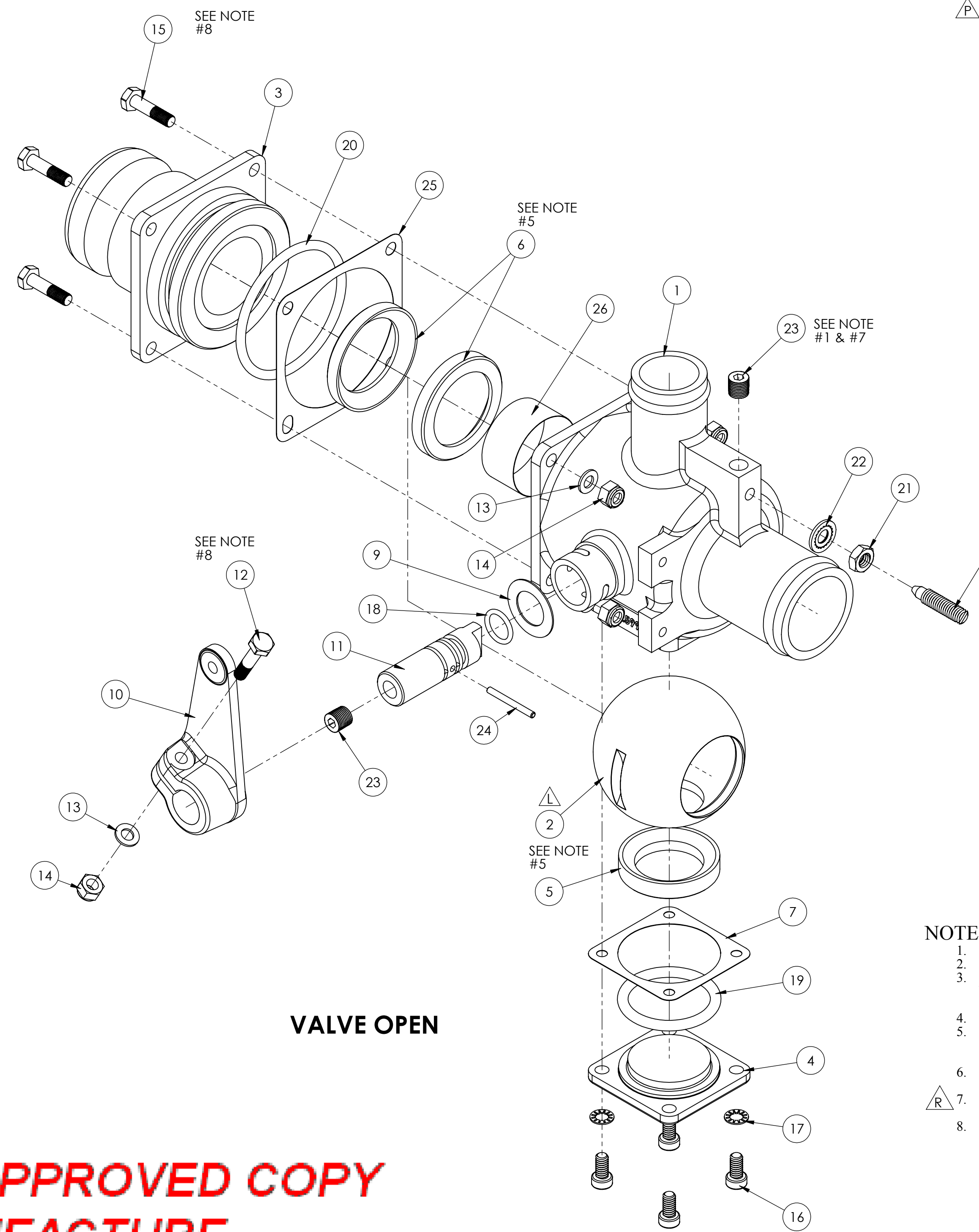


INLET



OUTLET

AFFIX IDENTIFICATION
IN THIS LOCATION
PER NOTE 4



VALVE OPEN

ITEM NO.	PART NUMBER	DESCRIPTION	QTY.
1	42599	VALVE BODY	1
2	42465	BALL	1
3	42492	CAP - MACHINED 2" Q.D. W/ O-RING	1
4	42342	RETAINER	1
5	60046	SEAL, BY PASS	1
6	60045	SEAL MAIN	2
7	60048	SHIM - LOWER, AS REQUIRED	1
8	40119	SCREW - ADJUST	1
9	60049	WASHER - CHAFING (BLACK FIBER)	1
10	40124	ARM-MACHINED, VALVE	1
11	40118	SHAFT	1
12	80114	BOLT HX HEAD AN4C-11A	1
13	81230	FLAT WASHER 1/4	5
14	80559	LOCK NUT AN365C-428A	5
15	80112	BOLT HX HEAD AN4C-10A	4
16	80814	SCREW, PAN HD	4
17	81203	WASHER, LOCK	4
18	81603	O RING (VITON)	1
19	81614	O RING (VITON)	1
20	81623	O RING 3" O.D. (VITON)	1
21	80536	HEX JAM NUT	1
22	85694	STAT-O-SEAL	1
23	81194	PLUG 1/8 NPT (BRASS)	2
24	86310	ROLL PIN	1
25	60047	SHIM - REAR QTY. AS REQUIRED	1
26	10615	SCREEN-SPRAY VALVE	1

- NOTES (UNLESS OTHERWISE SPECIFIED)**
- ITEM 23, PLUG MUST BE FLUSH WITH VALVE BODY.
 - FOR SEAL KIT, SEE DWG. 54001.
 - WITH VALVE CLOSED, PRESSURISE WITH WATER OVER 60psi AND ENSURE LESS THAN 6 DROPS PER MIN FROM ALL LEAK POINTS.
 - PART MUST BE IDENTIFIED PER DWG. NO. 60321.
 - COAT SURFACE OF ITEM 5 & 6 WHICH COMES INTO CONTACT WITH ITEM 2 WITH "EP 2" MULTI PURPOSE GREASE OR MOBILE MOBILITH SCH SYNTHETIC BEARING GREASE.
 - APPLY PERMATEX ANT-SIEZE LUBRICANT 80078 OR LOCTITE442-8029 TO THREADED PARTS UNLESS NOTED.
 - APPLY PTFE TAPE, OR SWAGelok PTFE FREE THREAD SEALANT, OR ARGCO SUPERDOPE ANEROBIC THREAD SEALANT. ITEMS 13 & 14 MAY BE REPLACED WITH AN4C-(A/R)A, LENGTH AS REQ'D.

**ENGINEERING APPROVED COPY
FOR MANUFACTURE**

REVISIONS REV. EO.# DESCRIPTION DATE BY R 7165 CORRECTED NOTE #7 9/17/15 CAS P 4934 REVISED NOTES, ADDED VIEW FOR AFFIX IDENTIFICATION LOCATION. ITEM #12 PN-80114 WAS 80116. TITLE WAS "2" BALL VALVE ASSY. 10/29/2013 PK N E.O. 01040 - INCL. NOTE 3 3/23/2011 JMW M E.O. 00984; 80116 WAS 80115; 81230 WAS 81228; 80559 WAS 80558; 80112 WAS 80111 3/11/2011 JMW L E.O. #0804: CHANGED VIEW ON ITEM #2 (BALL) TO SHOW HOLE IN BOTTOM OF BALL, NOT ON TOP. 1/5/2011 PK		NO. REQD. NEXT ASSEMBLY NAME DATE DRAWN J. DEZSO 01-12-68 CHECKED R.R. 9/23/15 ENG APPR. REMOVE ALL BURRS AND SHARP EDGES INTERPRET DRAWING PER ANSI Y14.5M-1982 SURFACE ROUGHNESS PER MIL-STD-10 ALL MACHINED SURFACES NOT TO EXCEED .63 MICRONS PER MIL-STD-10 UNLESS NOTED SolidWorks	UNLESS OTHERWISE SPECIFIED: DIMENSIONS ARE IN INCHES TOLERANCES: FRACTIONS +1/16 XX +.03 XXX +0.01 ANGLE ± 1/2° HOLE DIA: .015 - .125 DIA. +.004 -.001 .126 - .250 DIA. +.005 -.001 .251 - .500 DIA. +.006 -.001 .501 - .750 DIA. +.008 -.001 .751 - 1.000 DIA. +.010 -.001	<p>SCALE: 5:8 WEIGHT: SHEET 1 OF 1</p>
REVISIONS		FINISH	TITLE: SPRAY CONTROL VALVE 2" SIZE D DWG. NO. 20384 REV R SCALE: 5:8 WEIGHT: SHEET 1 OF 1	