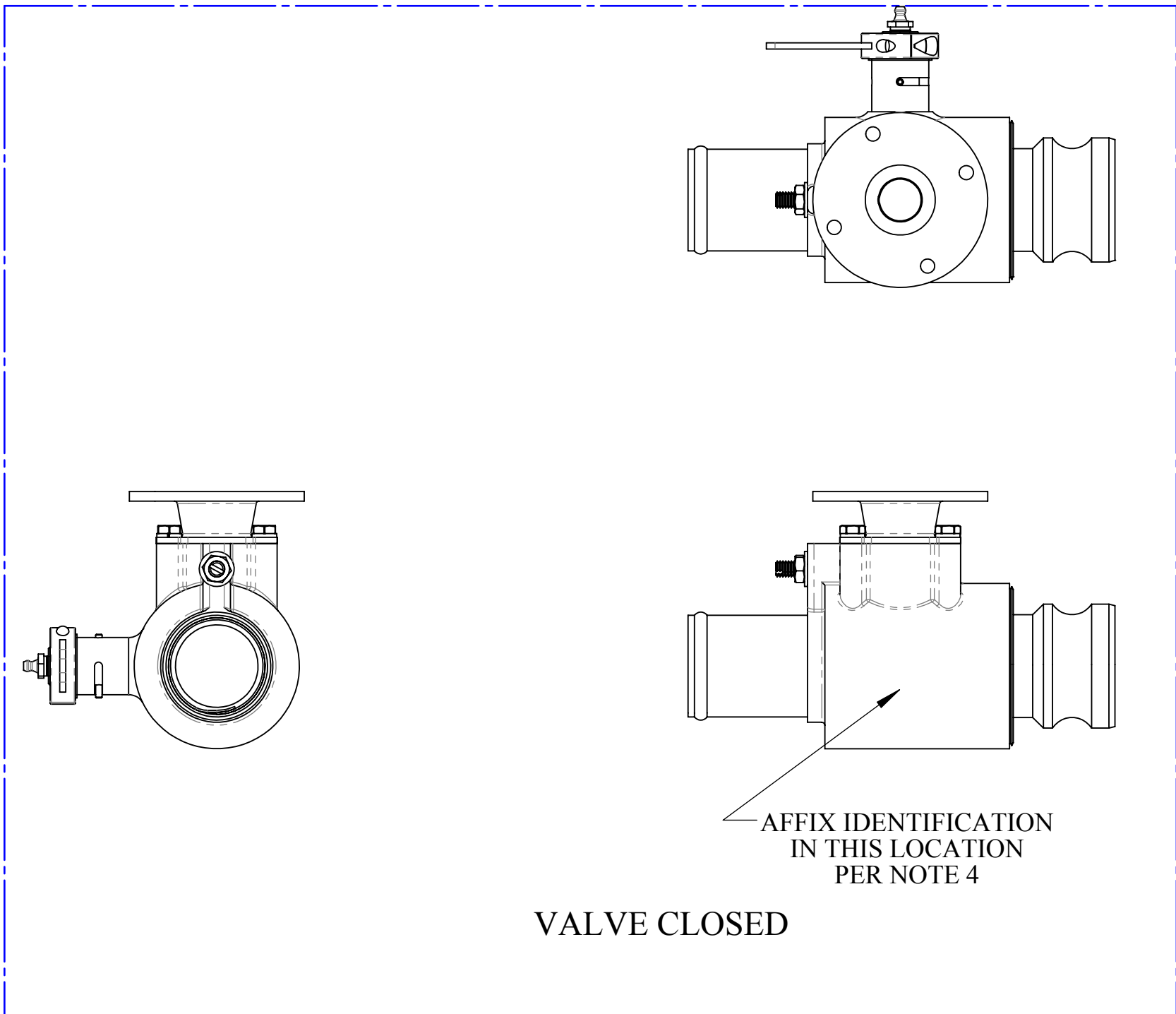
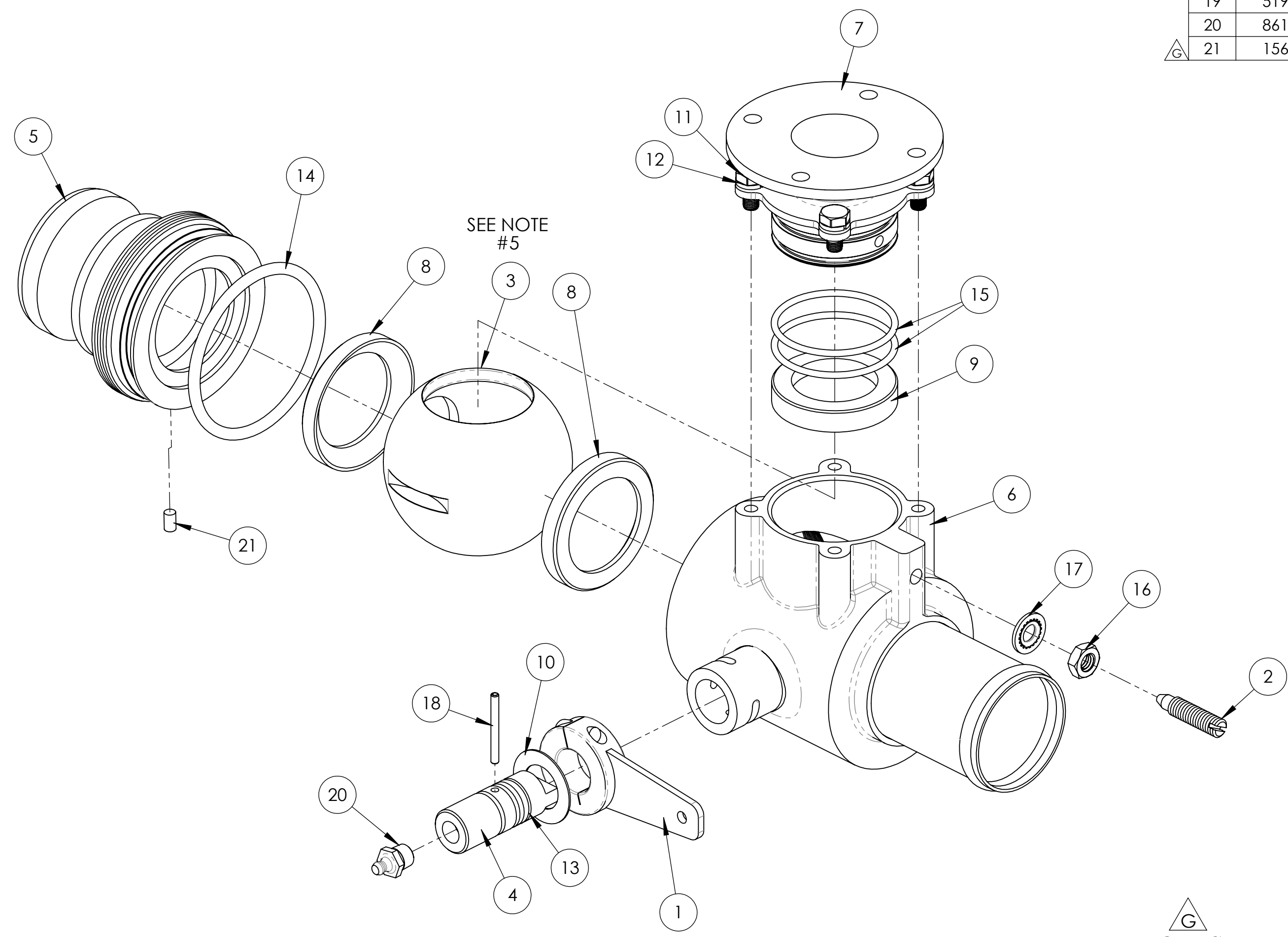
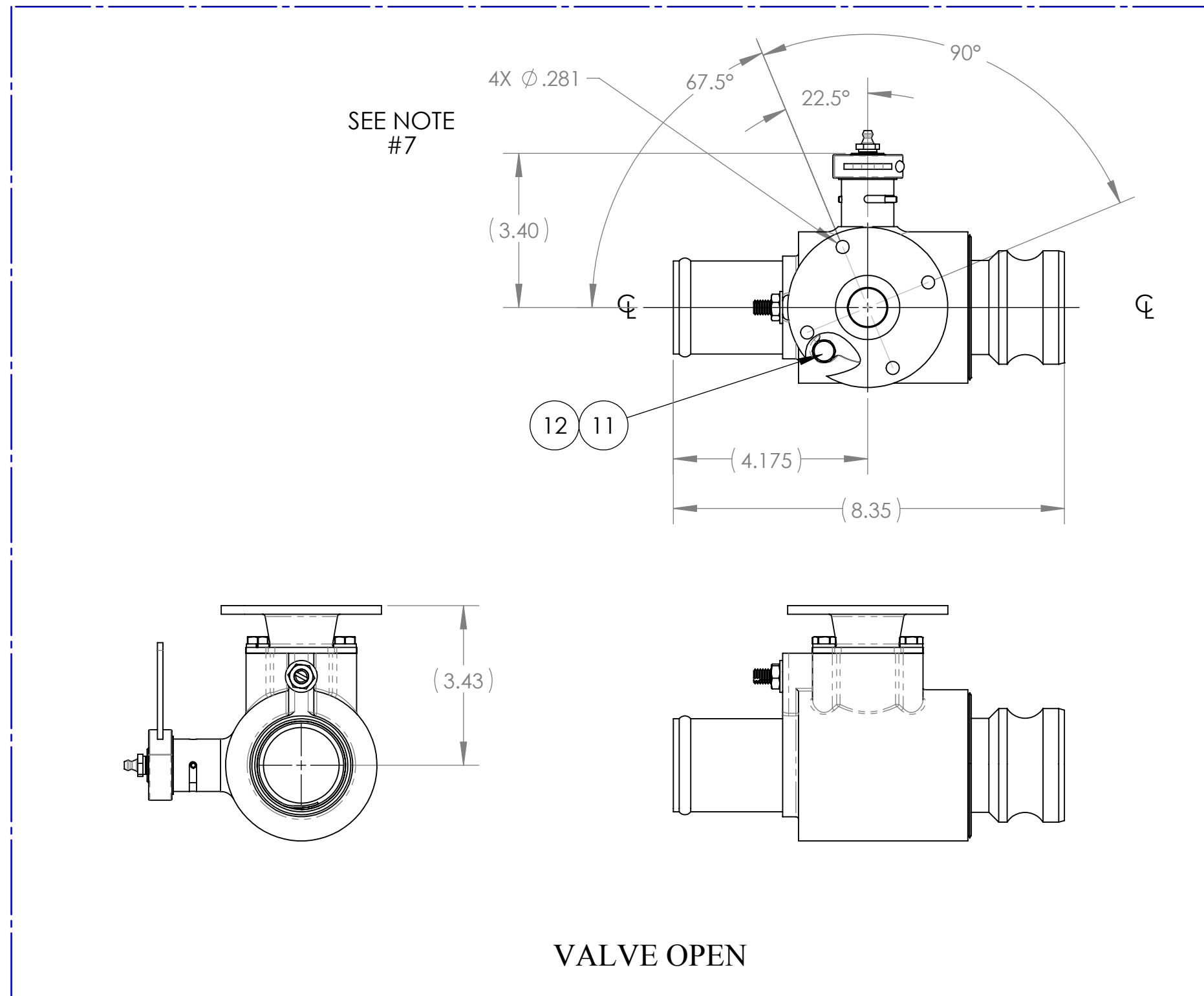


ITEM NO.	PART NUMBER	DESCRIPTION	QTY.
1	24398	WELD ASSY - HANDLE - SST VALVE	1
2	40119	SCREW - ADJUST	1
3	52465	BALL-MACHINED 2" SST SPAY VALVE	1
4	48118	SHAFT SS - SPRAY VALVE	1
5	56400	CAP-MACHINED, 2" SST SPRAY VALVE	1
6	56902	WELD ASSY-BODY, 2" SST	1
7	56403	VENTURI-BLANK MACH.	1
8	60045	SEAL MAIN	2
9	60046	SEAL, BY PASS	1
10	60049	WASHER - CHAFING (BLACK FIBER)	1
11	80102	BOLT HX HEAD SS	4
12	81195	SPLIT L'K WASHER SS	4
13	81603	O RING (VITON)	1
14	81623	O RING 3" O.D. (VITON)	1
15	81672	O-RING VITON - VENTURI 2" SST VALVE	2
16	80536	HEX JAM NUT	1
17	85694	STAT-O-SEAL	1
18	86310	COILED PIN	1
19	51973	WELD ASSY - WRENCH (NOT SHOWN)	1
20	86177	MALE GREASE ZERK - 1/8 NPT	1
21	15695	PLUG CAP - SST VALVE	1



DWG NO: **58383** REV: **G**

ENGINEERING APPROVED COPY FOR MANUFACTURE

- NOTES (UNLESS OTHERWISE SPECIFIED)**
- ITEM #19 PN-51973 (WRENCH) IS NOT SHOWN BUT INCLUDED WITH VALVE ASSEMBLY
 - FOR SEAL KIT SEE 53390
 - WITH VALVE CLOSED, PRESSURISE WITH WATER OVER 60psi AND ENSURE LESS THAN 6 DROPS PER MIN FROM ALL LEAK POINTS.
 - PART MUST BE IDENTIFIED PER DWG. NO. 60321.
 - COAT SURFACE OF ITEM 8 WHICH COMES INTO CONTACT WITH ITEM 3 WITH "EP 2" MULTI PURPOSE GREASE OR MOBILE MOBILITH SCH SYNTHETIC BEARING GREASE. APPLY PERMATEX ANT-SIEZE LUBRICANT 80078 OR LOCTITE442-8029 TO THREADED PARTS, UNLESS NOTED.
 - DRILL 4X Ø9/32 (0.281) AT ASSEMBLY USE TEMPLATE #98882 TO LOCATE HOLES. CENTER TEMPLATE & VENTURI LINE-UP TEMPLATE CENTER LINE TO CENTER LINE OF VALVE

REV.	EO.#	DESCRIPTION	DATE	BY
G	4938	REDRAWN IN SOLIDWORKS, REMOVED PN-11551 QTY 1, 14603 QTY 1, PN-82069 QTY 1, ADD PN-15695 QTY 1, PN-56902 WAS 56402 & PN-56403 WAS 56906, REVISED NOTES.	10/30/2013	PK
REVISIONS				

NO. REQD.	NEXT ASSEMBLY	NAME	DATE	UNLESS OTHERWISE SPECIFIED: DIMENSIONS ARE IN INCHES
		MARSELOS	4-01-96	TOLERANCES: FRACTIONS: ±1/16 XX ±.03 XXX ±0.01 ANGLE ±1/2°
		RR	11-18-13	HOLE DIA: .015 - .125 DIA. +.004 -.001 .126 - .250 DIA. +.005 -.001 .251 - .500 DIA. +.006 -.001 .501 - .750 DIA. +.008 -.001 .751 - 1.000 DIA. +.010 -.001
MATERIAL				REMOVE ALL BURRS AND SHARP EDGES
FINAL ASSEMBLY				INTERPRET DRAWING PER ANSI Y14.5M-1982 SURFACE ROUGHNESS PER MIL-STD-10 ALL MACHINED SURFACES NOT TO EXCEED .63 MICRONS PER MIL-STD-10 UNLESS NOTED
FINISH				SolidWorks

TRANSLAND

ASSEMBLY-2" SST SPRAY VALVE

TITLE: **ASSEMBLY-2" SST SPRAY VALVE**

SIZE: **D** DWG. NO.: **58383** REV: **G**

SCALE: 3:8 WEIGHT: SHEET 1 OF 1