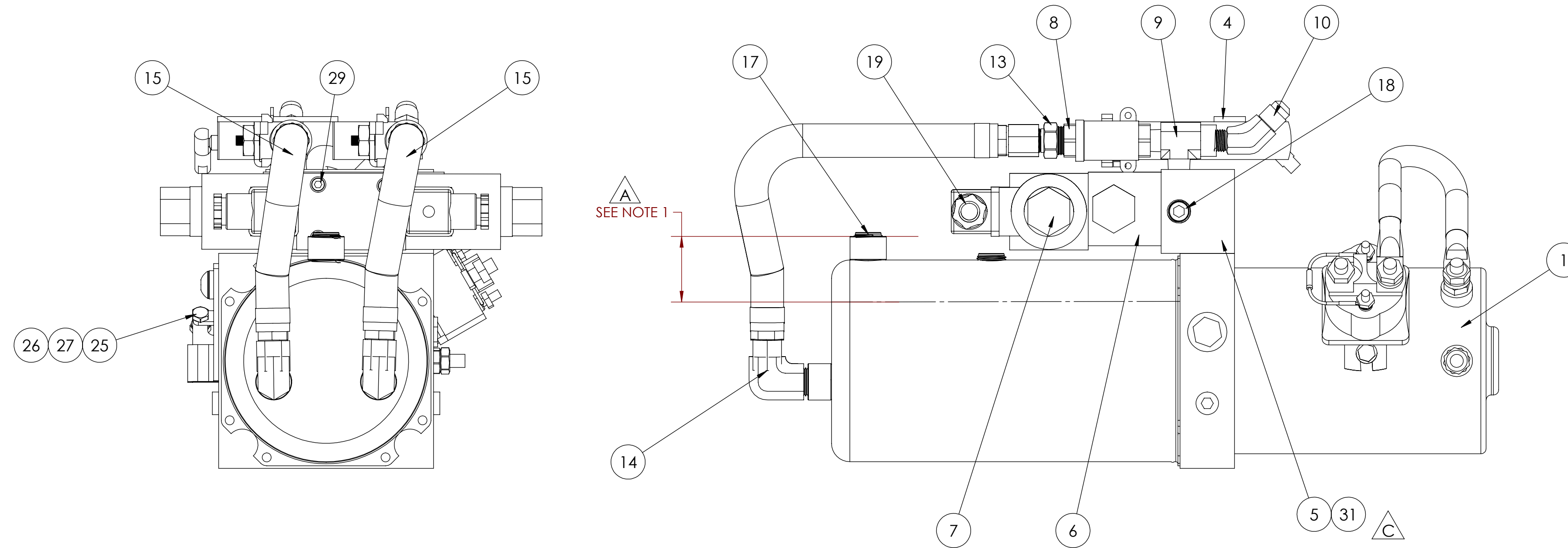
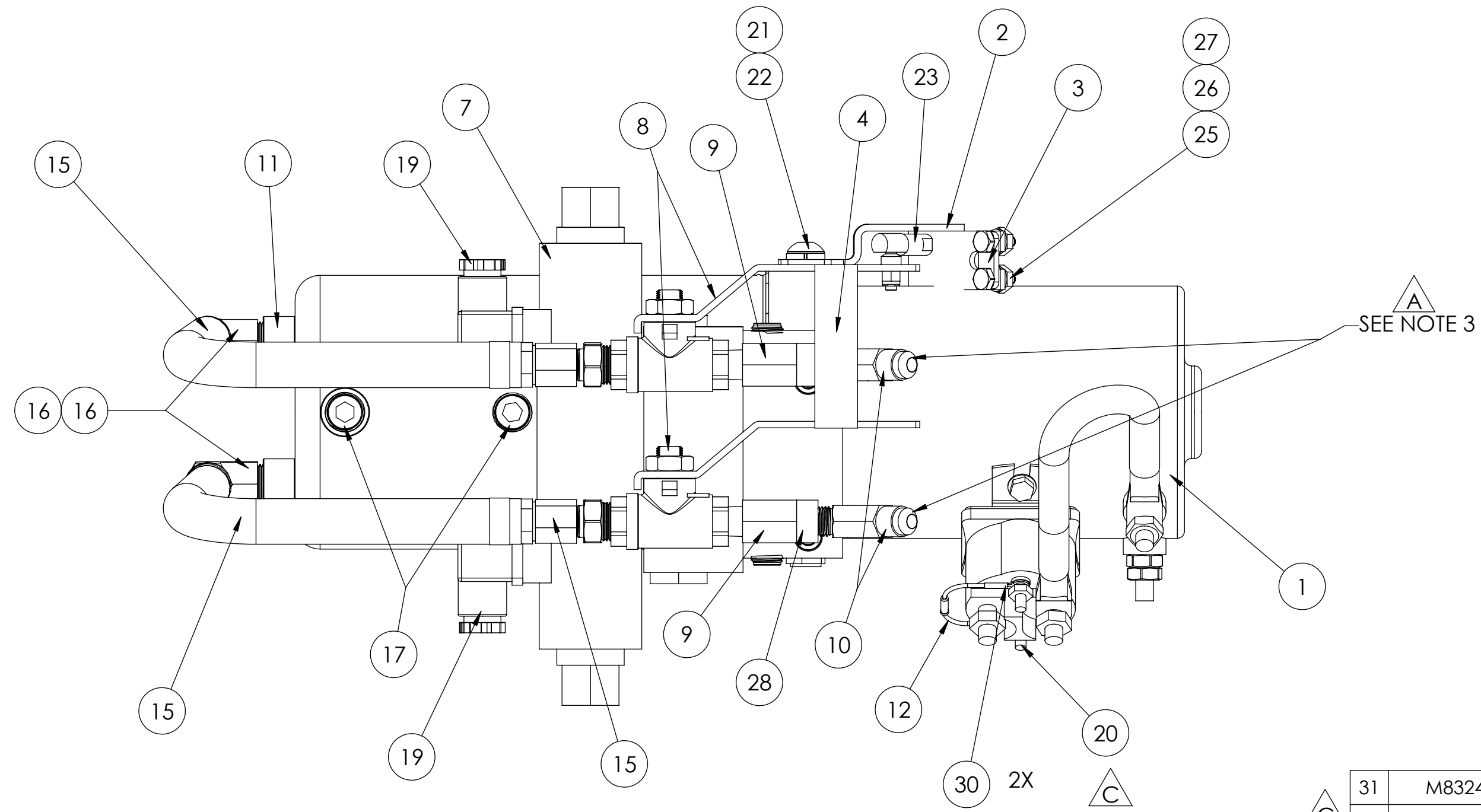
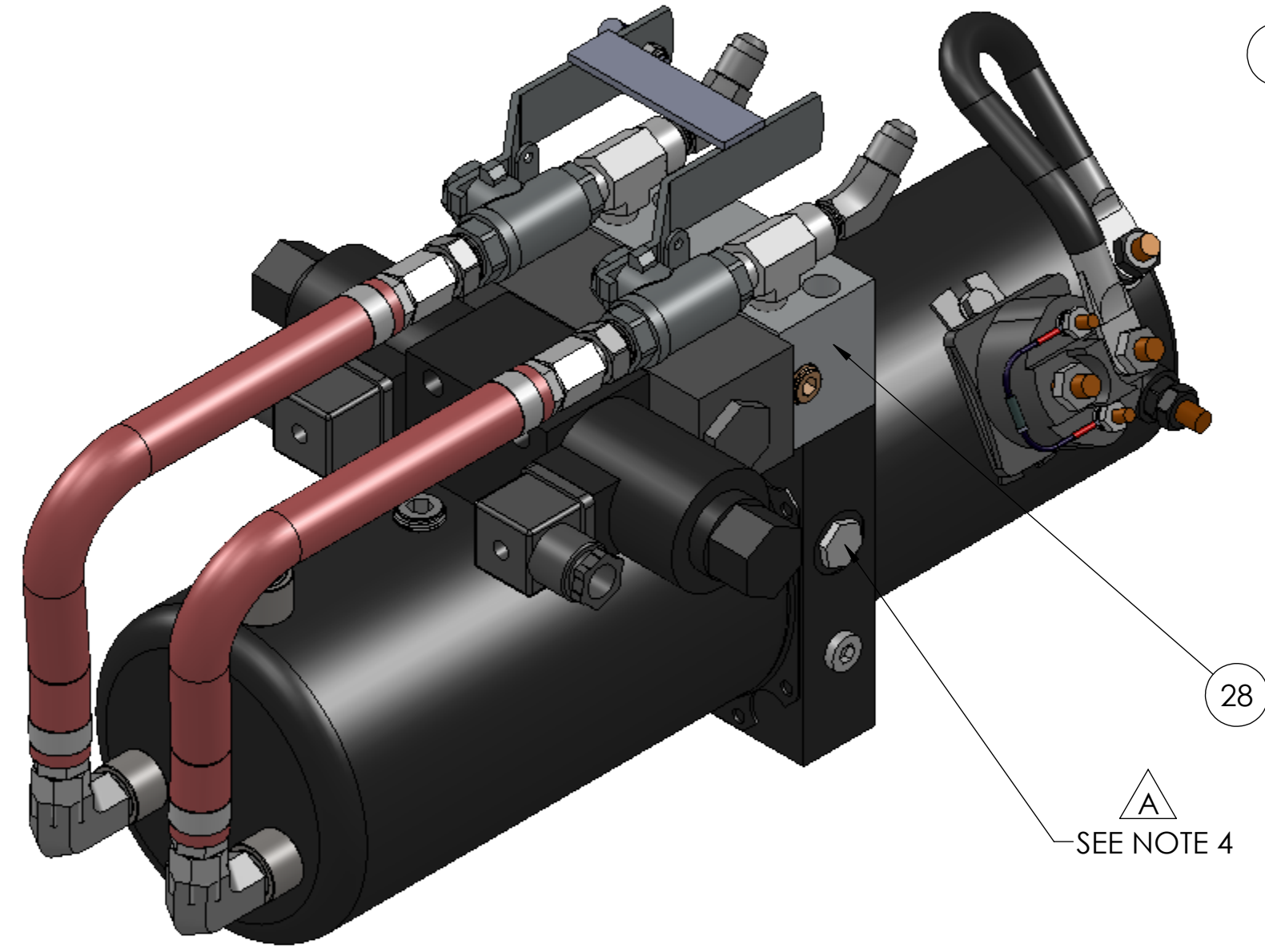


NOTES (UNLESS OTHERWISE SPECIFIED)

1. FILL TO 1.1/2" TO 1.3/4" FROM TOP OF COUPLING WITH DEXTRON III TRANSMISION FLUID.
2. CONNECT WIRING PER SHEET 4.
3. CONNECT TO HYD. CYLINDER AND CYCLE FULL OPEN TO FULL CLOSE.
4. TO SET RELIEF, REMOVE PLUG, ENSURE RELIEF IS SET TO 1800 ± 25 PSI.



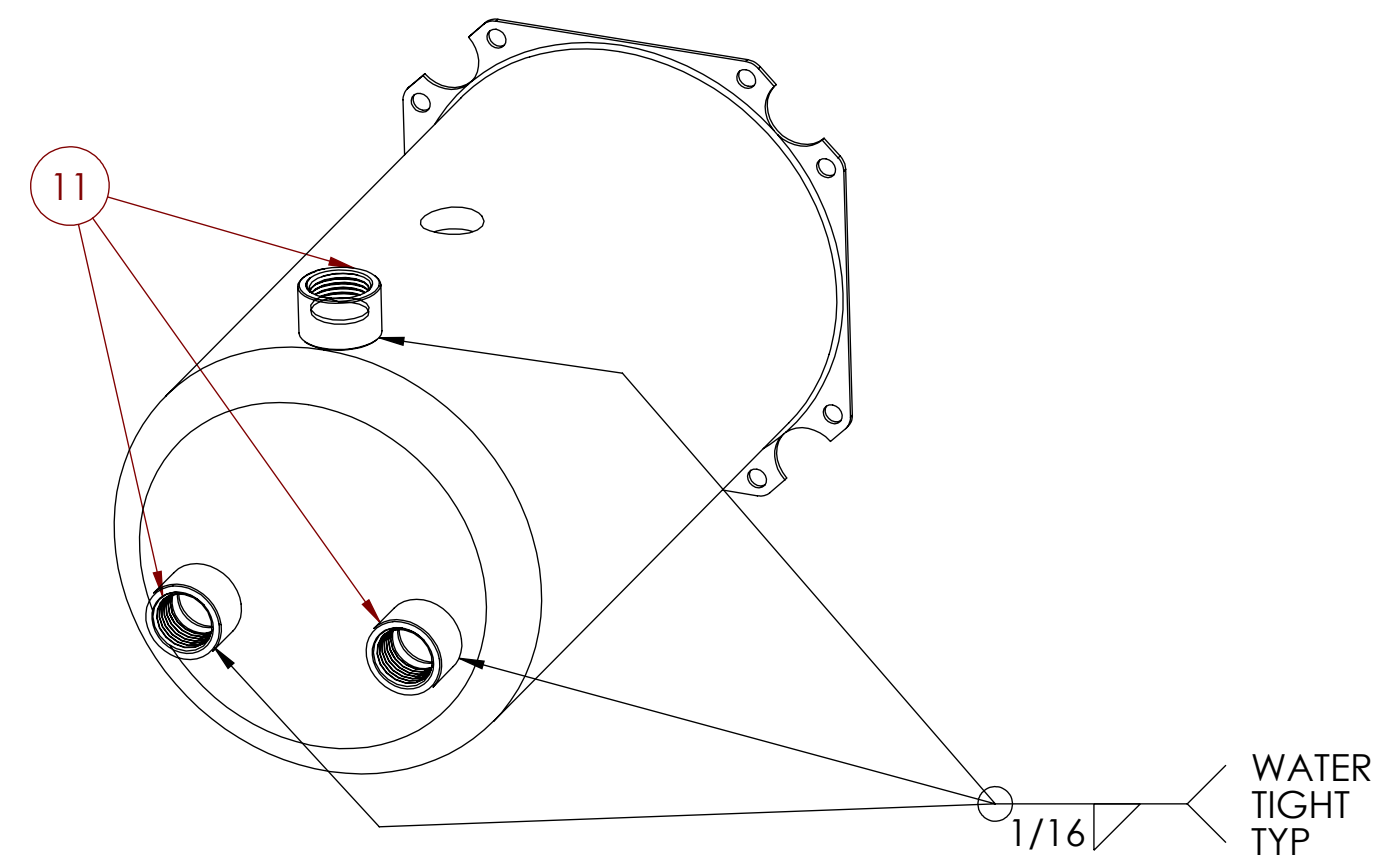
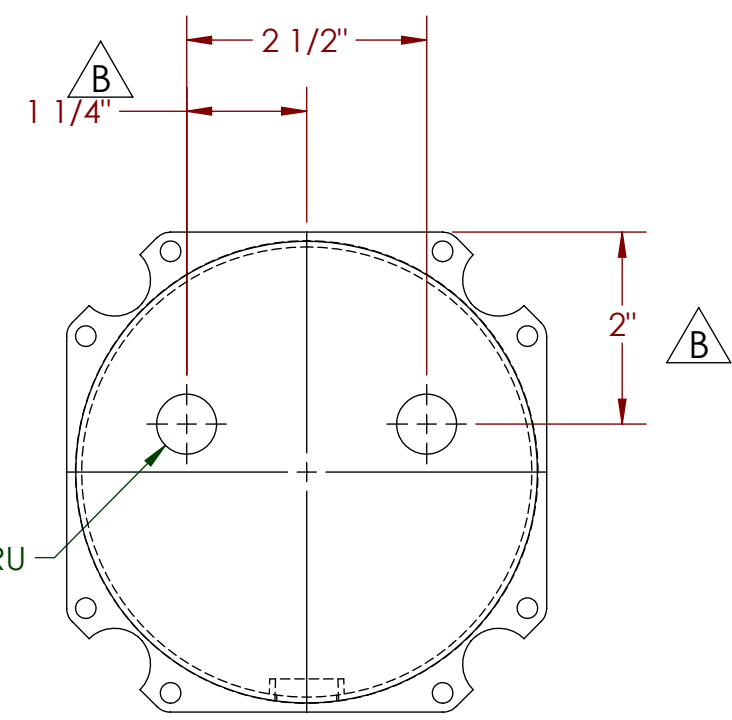
DWG NO: **25158** REV: **E**

ITEM NO.	PART NO.	NO. REQD	DESCRIPTION	SIZE	SPEC.	NO. REQD	NEXT ASSEMBLY	FINAL ASSEMBLY
31	M83248/-113	2	O-RING VITON (81603)					
30	MS25036-154	2	TERMINAL (85856)					
29	87997	4	SOCKET HD CAP SCREW 10-24 X 4" LG.					
28	91251A587	2	SOCKET HD CAP SCREW 5/16-18 X 1.471 LG. MCMASTER CARR (85640)				COMMERCIAL	
27	MS35691-3	2	NUT HX-HEAD SS 10-32 (80516)					
26	AN960C10	2	FLAT WASHER #10 SST (81219)					
25	AN3C-5A	2	BOLT HX HEAD SS 10-32 X .656 LG (80011)					
24	AN365C-1032A	3	LOCK NUT SS 10-32 (80570)					
23	6058K41	1	BOLT, LINKAGE BALL - 10-32, MCMASTER CARR (80480)				COMMERCIAL	
22	92949A650	1	SCREW, BUTTON HD 3/8-24 X 3/4" LG. MCMASTER CARR (81031)				COMMERCIAL	
21	AN935C616	1	SPLIT LK WASHER SST 3/8 (81198)					
20	32500089	1	RELAY 24 VOLT, WICHITA INDUSTRIAL SALES (85801)				COMMERCIAL	
19	710775	2	ELECTRICAL PLUG, MOTION INDUSTRIES, INC. (86508)				COMMERCIAL	
18	81177	2	1/4" PIPE BRASS PLUG					
17	44605K233	2	3/8" PIPE THREAD PLUG, MCMASTER CARR (81193)				COMMERCIAL	
16	-	-	DELETE					
15	29276	2	HIGH PRESSURE HOSE W/F/S 10.82"					
14	2501-6-6	2	ELBOW 90 DEG. COMMERCE HOSE & INDUSTRIAL PRD. INC (85265)				COMMERCIAL	
13	2404-6-4FS	2	STRAIGHT ADAPTER, COMMERCE HOSE & INDUSTRIAL PRD. INC (85270)				COMMERCIAL	
12	1N5408	1	DIODE (82401)					
11	2503-06-04FG	3	HELF COUPLING 3/8 NPT FEMALE SS, WILSON COMPANY (85196)				COMMERCIAL	
10	2503-6-4FS	2	ELBOW, 45 DEG., WILSON COMPANY (85263)				COMMERCIAL	
9	5603-4-4FS	2	TEE W/CLOSE NIPPLE, WILSON COMPANY (85262)				COMMERCIAL	
8	83867	2	BALL VALVE 1/4 NPT					
7	HP208-24V	1	SOLENOID VALVE 3POS, 4 WAY, MOTION INDUSTRIES, INC. (86506)				COMMERCIAL	
6	86507	1	PILOT OPERATED CHECK VALVE PACKAGE					
5	47102	1	MANIFOLD-HYDRAULIC PUMP PLATE, PRESSURE RELIEF VALVE HANDLE					
4	18376	1	LOCK PLATE					
3	18379	1	LOCK PLATE					
2	26582	1	WELD ASSY-SUPPORT BRACKET, CABLE					
1	57505	1	HYD. POWER UNIT WITH SS SUCTION TUBE					

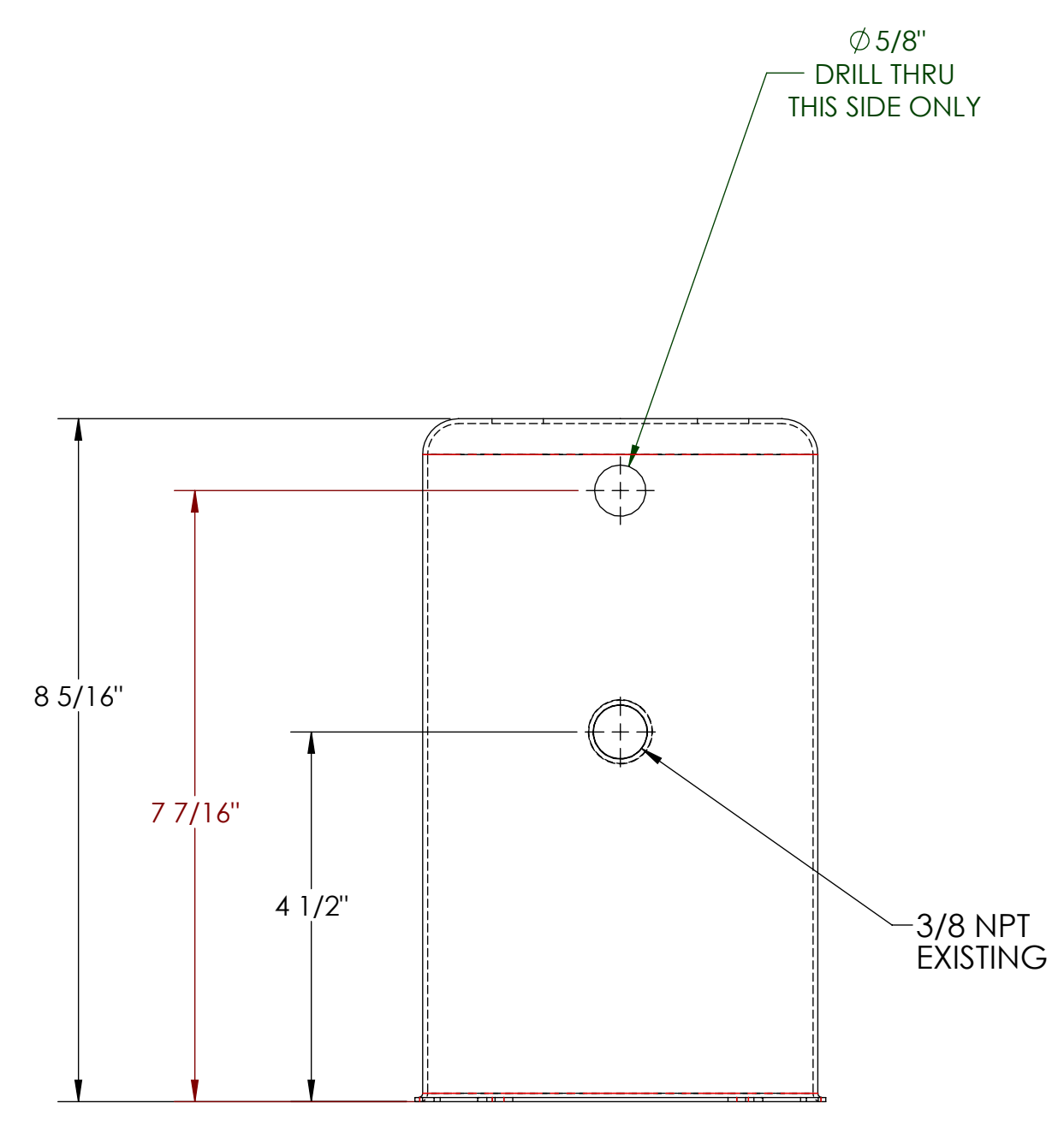
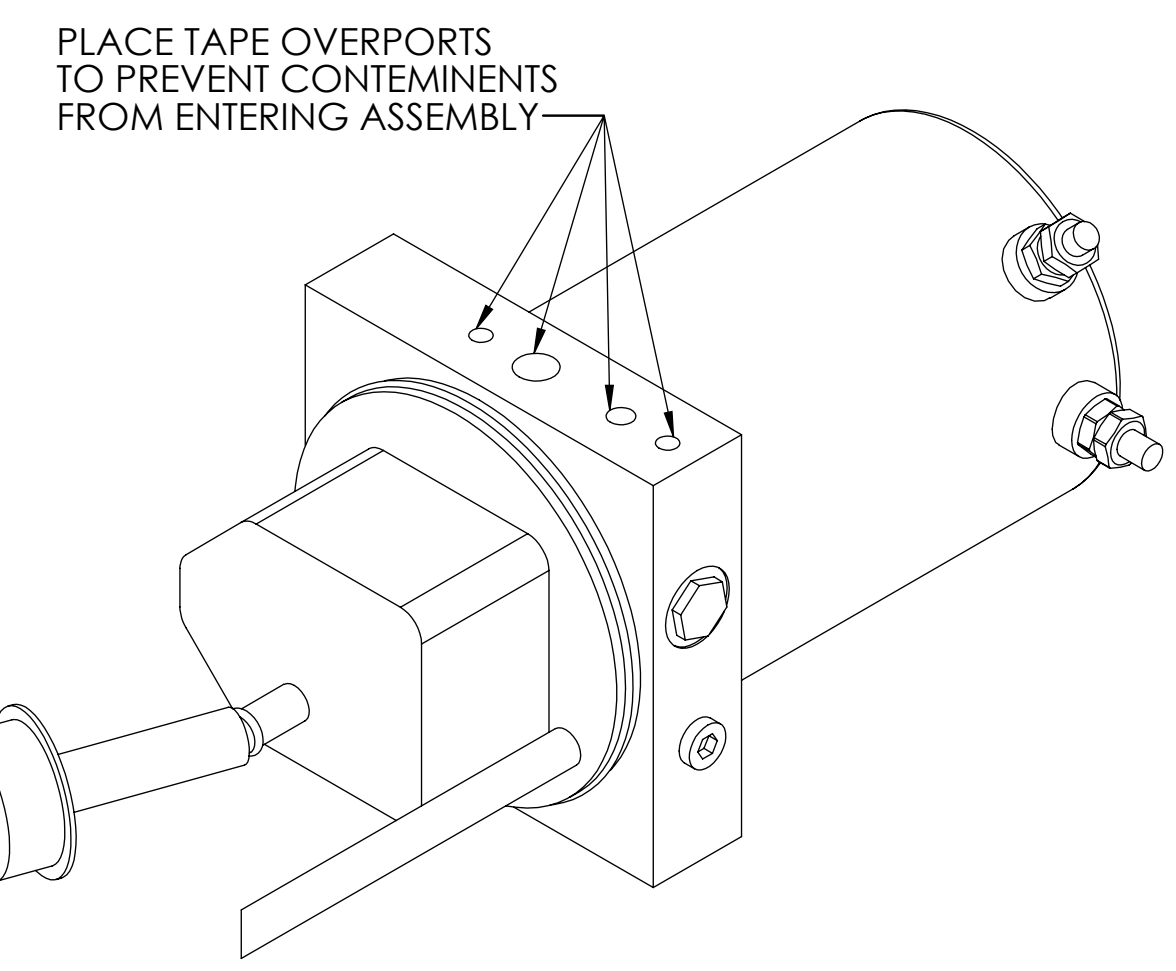
REV.	E.O.#	DESCRIPTION	BY	DATE	APPR'D	DATE
E	11052	CHANGED PART NUMBER OF ITEM 1 FROM 86505 TO 57505	LA	10/6/2017	CK	10/10/17
D	8902	29276 WAS 29270	CAS	6/17/16	CLK	6/26/16
C	4040	NEW TITLE BLOCK ; ADDED ITEM NO. 30 & 31	RC	5/4/2016	CLK	5/12/2016
B	4023	ITEM 15 (29270) QTY 2 WAS 1, DEL. ITEM 16(29271) QTY 1, ON SHEET #2: DELETED DIMENSIONS: (.88), 1.1/2" & 45° ±5°, ADDED DIMENSIONS: 1 1/4" 2 1/2" AND 2"	PK	2/27/2013	JMV	2/28/2013
A	2553	CORRECTED DESCRIPTION OF ITEM 6 P/N 86507, #7 P/N 86506, ADDED NOTES 1 & 2	PK	2/14/2012	JMV	2/15/2012
NC	2167	INITIAN RELEASED	PK	12/6/2011	JMV	12/7/2011
REV.	E.O.#	DESCRIPTION	BY	DATE	APPR'D	DATE

ENGINEERING APPROVED COPY FOR MANUFACTURE

DRAWN: PK 12/05/11 CHECKED: R.R. 6/17/16 ENG APPR: CLK 6/17/16 REMOVE ALL BURRS AND SHARP EDGES INTERPRET DRAWING PER ANSI Y14.5M-1982 SURFACE ROUGHNESS PER MIL-STD-10 ALL MACHINED SURFACES NOT TO EXCEED AS MICROINCHES PER MIL-STD-10 UNLESS NOTED	UNLESS OTHERWISE SPECIFIED: DIMENSIONS ARE IN INCHES TOLERANCES: FRACTIONS ±1/16 DECIMALS ±.03 Holes ±.010 ANGLES ±1/2°	TITLE: POWER UNIT ASSY COMPLETE G/B HYD DWG. NO. 25158 SCALE: NTS MODEL: SHEET 1 OF 4
--	---	--



WELDMENT



FOR MACHINING

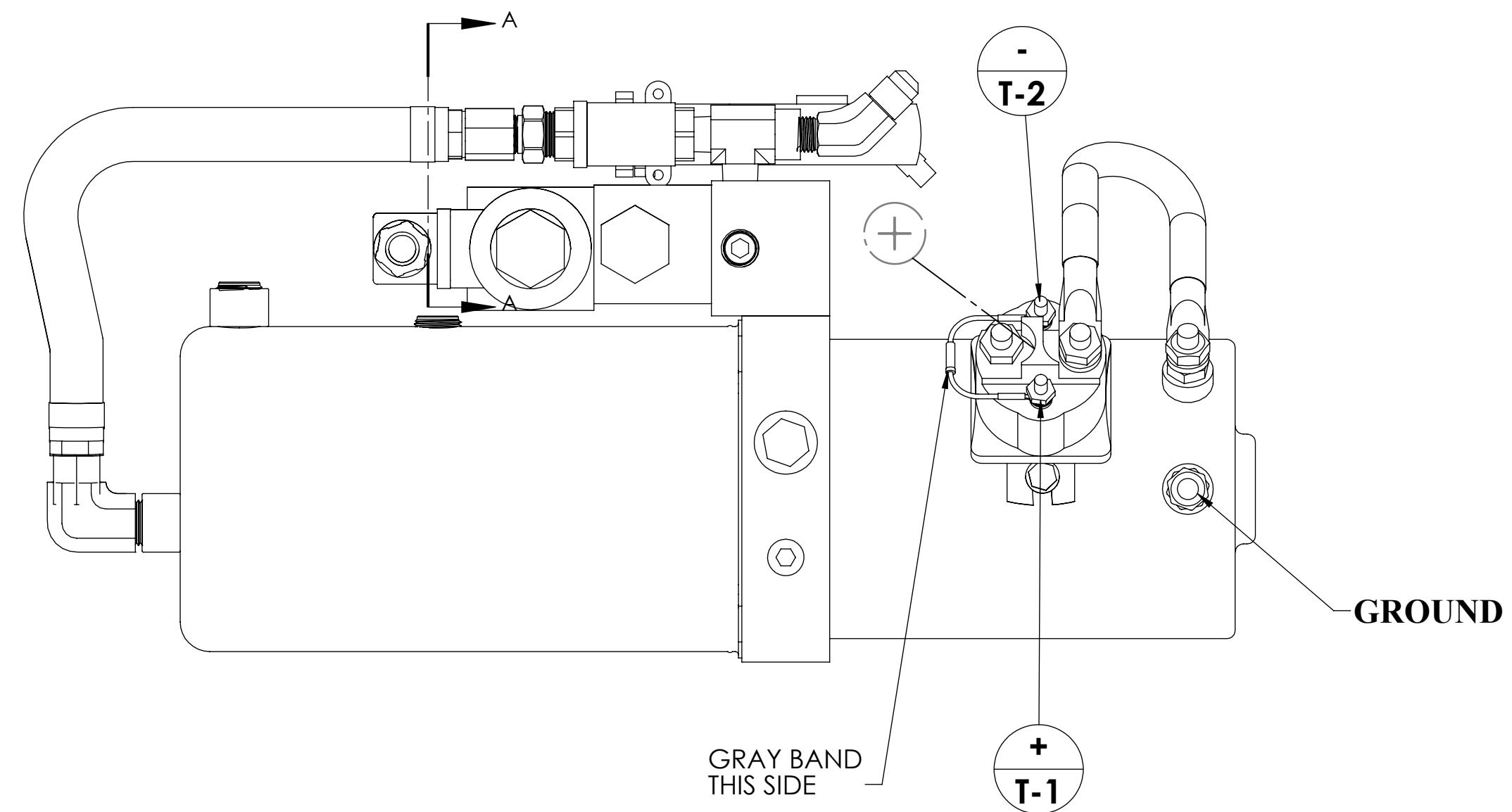
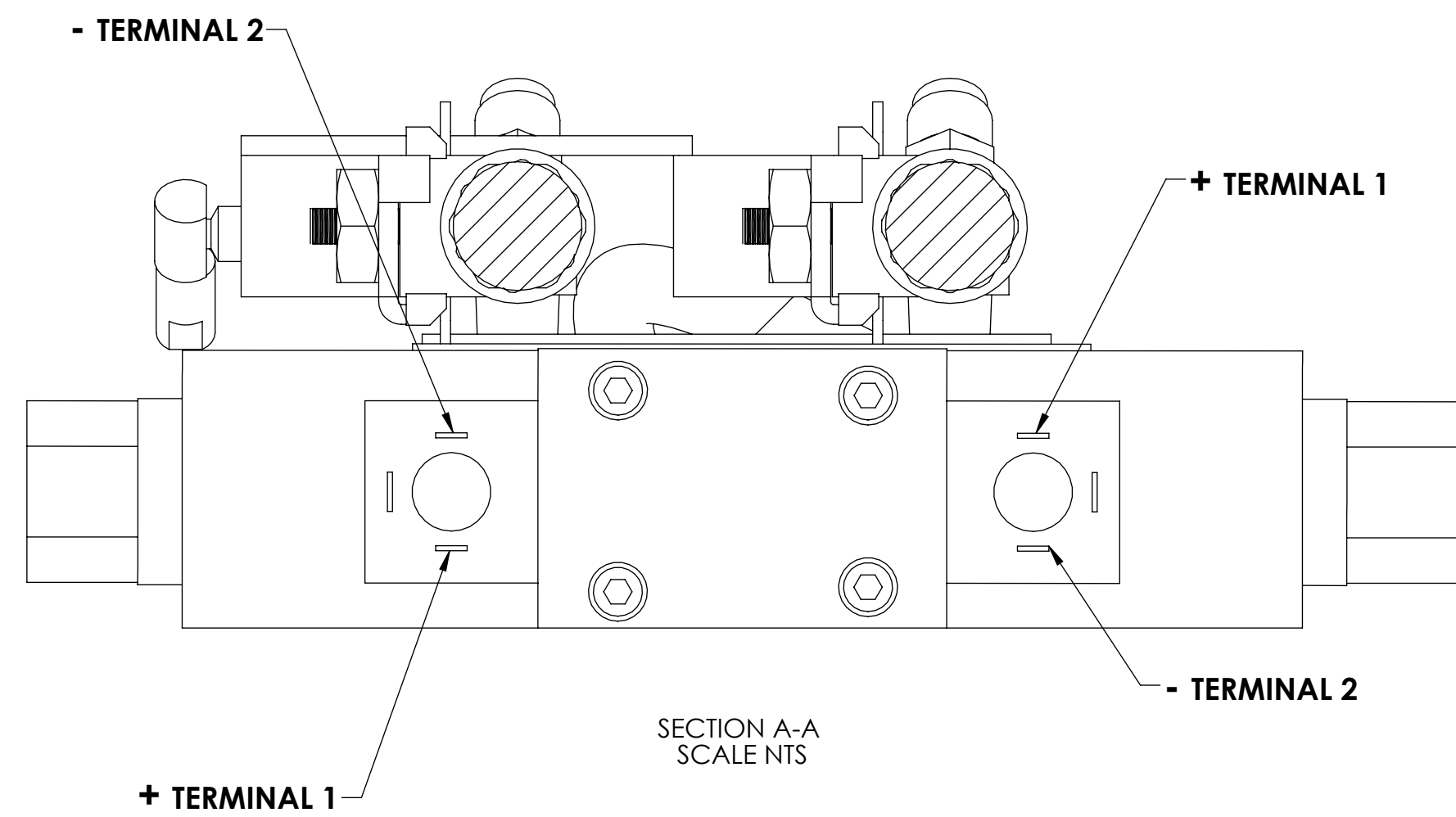
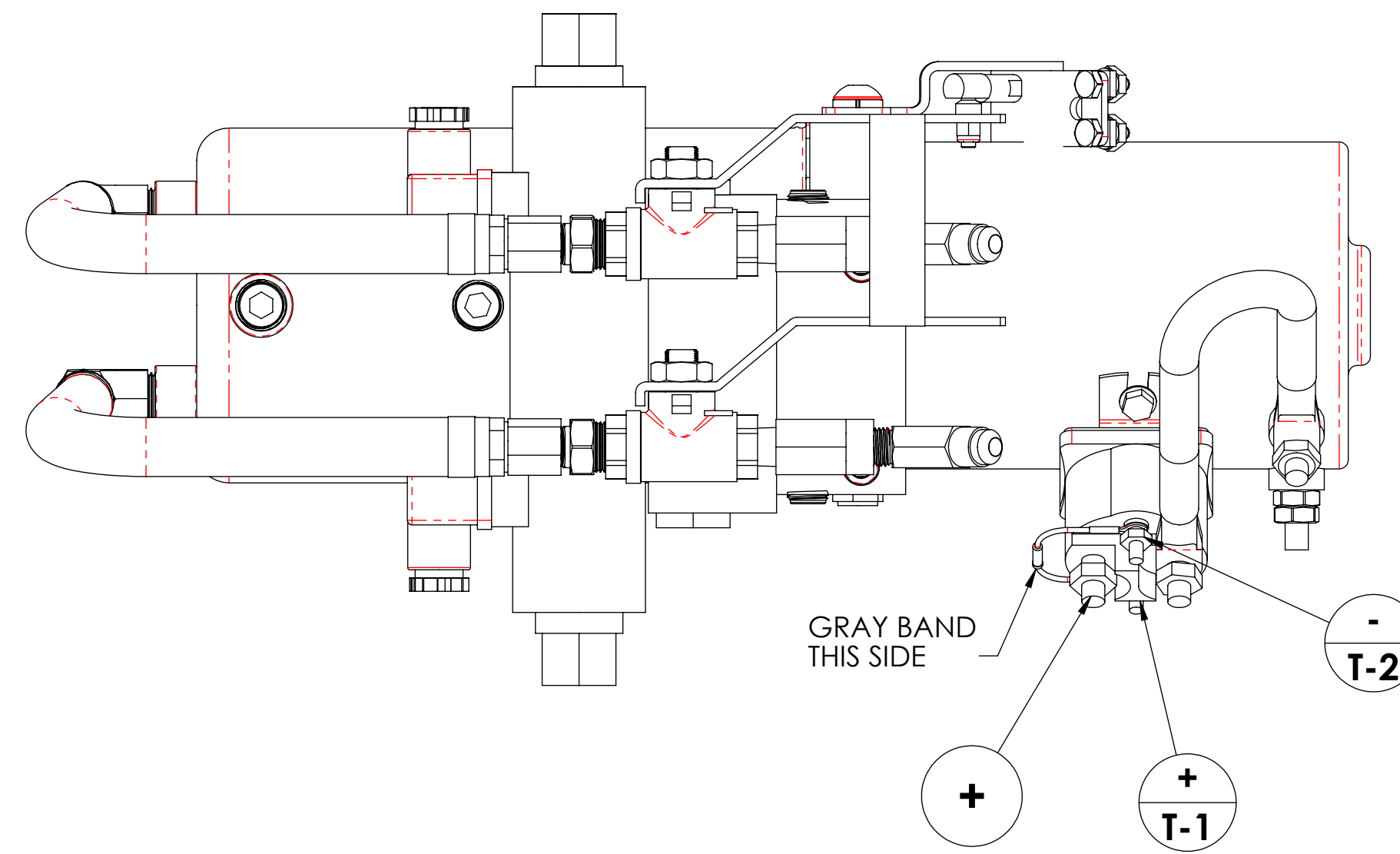
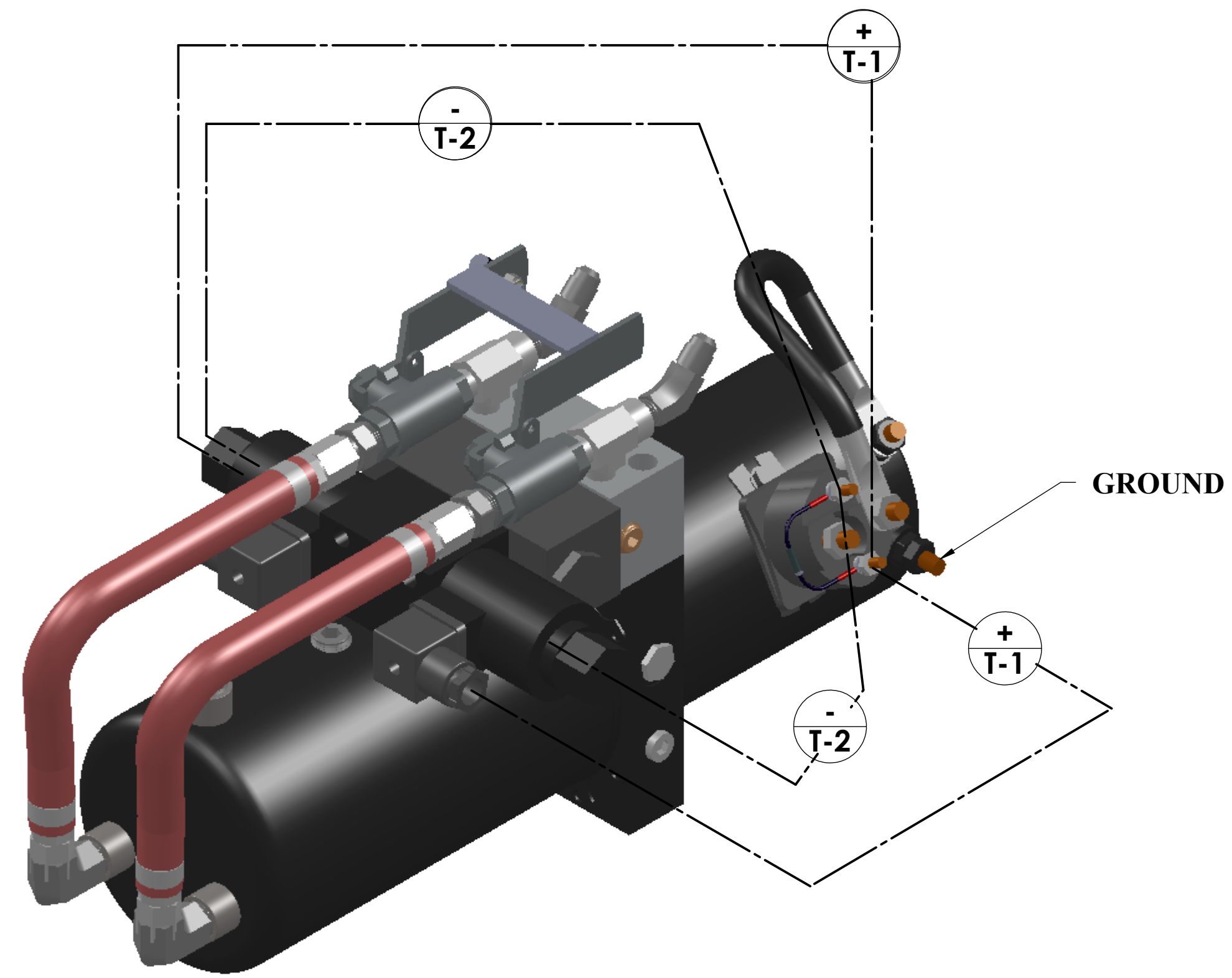
DWG NO:	REV:
25158	E

**ENGINEERING APPROVED COPY
FOR MANUFACTURE**



1206 HATTON ROAD, WICHITA FALLS, TX 76302


TITLE:		POWER UNIT ASSY COMPLETE G/B HYD	
SIZE	DWG. NO.	REV	
B	25158	E	
SCALE: NTS		MODEL:	SHEET 2 OF 4



ELECTRICAL WIRING

DWG NO: **25158** REV: **E**

**ENGINEERING APPROVED COPY
FOR MANUFACTURE**

 1206 HATTON ROAD, WICHITA FALLS, TX 76702			
TITLE: POWER UNIT ASSY COMPLETE G/B HYD			
SIZE B	DWG. NO. 25158	REV E	
SCALE: NTS	MODEL:	SHEET 4 OF 4	