

	51	80628	NUT, JAM	1/2-20UNC	16
	52	80553	NUT		4
N	53	80559	NUT		105
	54				
M/N	55	80563	NUT		12
	56	80568	NUT		1
	57	80570	NUT		12
H	58	80572	NUT		1
	59	80589	COTTER PIN		4
	60	80614	PIN		4
	61	81031	SCREW		4
	62	81219	WASHER		20
U	63	81230	WASHER		73
M/N	64	81233	WASHER		16
M/N	65	81237	WASHER		3
J/H	66	81243	WASHER		1
	67	82048	COTTER PIN		8
T	68	45812	HYDRAULIC CYLINDER		1
	69	85808	CLEVIS		1
	70	86480	HYDRAULIC ADAPTER		2
	71	26599	SPACER		1
U	72	53625	BUTTERFLY VALVE		1
	73	60562	GASKET		2
T	74	80225	BOLT		12
	75	71648	BUSHING		4
	76	86479	ELBOW		2
	77	22544	DOOR ASSEMBLY		1
T/H	78	-	-		-
T	79	80001	WASHER, FLAT .020 THICK		2
	80	18344	SLEEVE		2
K	81	81227	WASHER		32
M	82				
V/P	83				
V/P	84				
V/P	85				
V/P	86				
V/P	87				
V/P	88				

ITEM NO.	PART NO.	DESCRIPTION	QTY	
1	10906	HOOK	4	
2	14448	CLEVIS, RH	4	
3	14449	CLEVIS, LH	4	
4	16326	BUSHING	2	
5	16327	BUSHING	1	
6	16328	BRACKET, CABLE SUPPORT	1	
7	16329	BRACKET	1	
8	25723	CYLINDER LOCK ASSEMBLY	1	
9	18360	COVER PLATE	2	
10	18361	BRACKET, LH	1	
11	18362	BRACKET, RH	1	
12	18365	BRACKET, LH	1	
13	18366	BRACKET, RH	1	
14	22041	BRACKET ASSEMBLY	4	
15	22042	BRACKET ASSEMBLY	4	
16	22043	STIFFENER ASSEMBLY	4	
17	22045	BRACKET ASSEMBLY	4	
18	22046	BUSHING PLATE ASSEMBLY	4	
N	19	22467	BOX ASSEMBLY	1
	20	22544	ROD ASSEMBLY	4
	21	23103	ARM ASSEMBLY	4
	22	22607	ARM ASSEMBLY, LH	2
	23	22608	ARM ASSEMBLY, RH	2
K	24	26610	BRACKET ASSEMBLY	4
K	25	23102	ROD ASSEMBLY	4
	26	24432	EMERGENCY DUMP RELEASE ARM ASSEMBLY	1
	27	24433	EMERGENCY DUMP RELEASE ASSEMBLY	1
	28	25154	TUBE ASSEMBLY	2
	29	25708	TUBE ASSEMBLY	1
	30	25713	BRACKET ASSEMBLY, CYLINDER MOUNTING	1
	31	26553	BRACKET ASSEMBLY, LH	1
	32	26554	BRACKET ASSEMBLY, RH	1
	33	42907	HINGE BOLT	4
J	34	44356	CLEVIS	1
	35	44357	CLEVIS	4
T	36	80007	BOLT	8
	37	80008	BOLT	1
	38	80011	BOLT	8
	39	80024	BOLT	2
	40	80104	BOLT	79
U	41	80108	BOLT	15
N	42	80110	BOLT	5
N	43	80250	BOLT	8
	44	80624	PIN W/RETAINING RING .38 X 1.50 SST	1
M	45	80242	BOLT	5
	46	80323	BOLT	1
	47	47111	EYE BOLT	1
N	48	80506	NUT	4
J	49	80513	NUT	1
	50	80514	NUT	1

DWG NO: **25150** REV: **V**

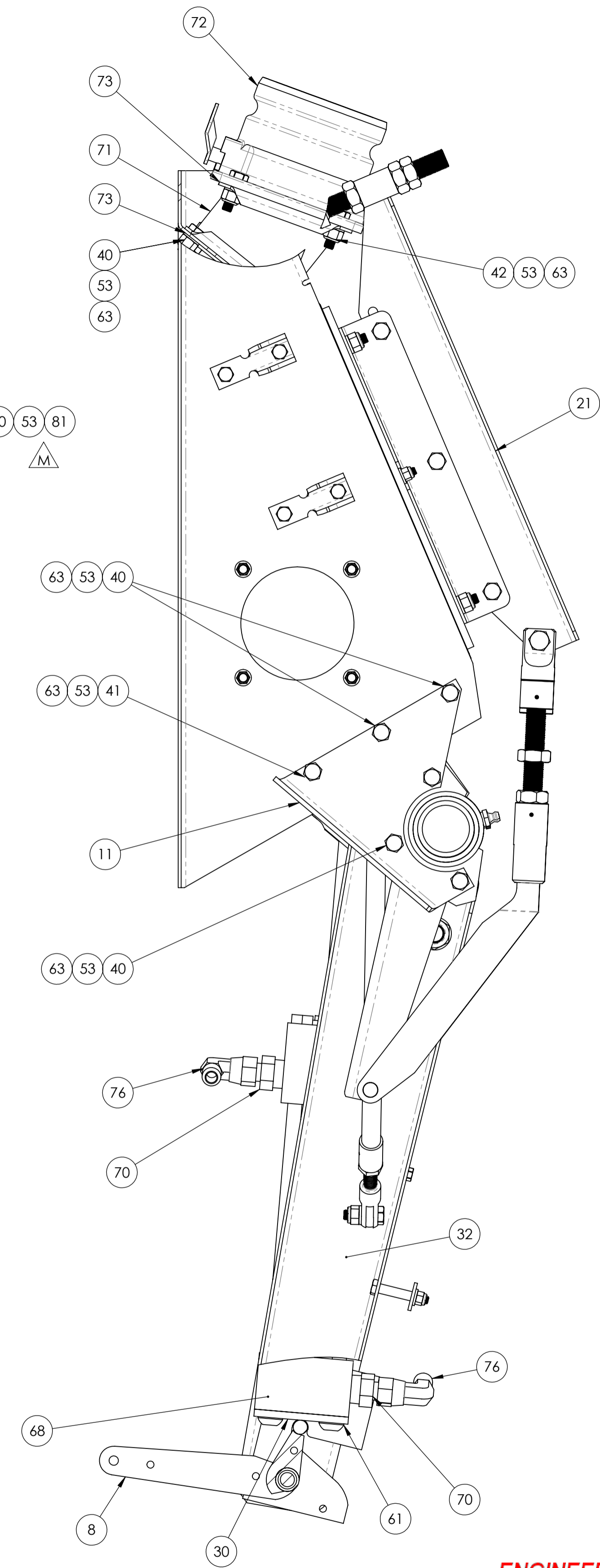
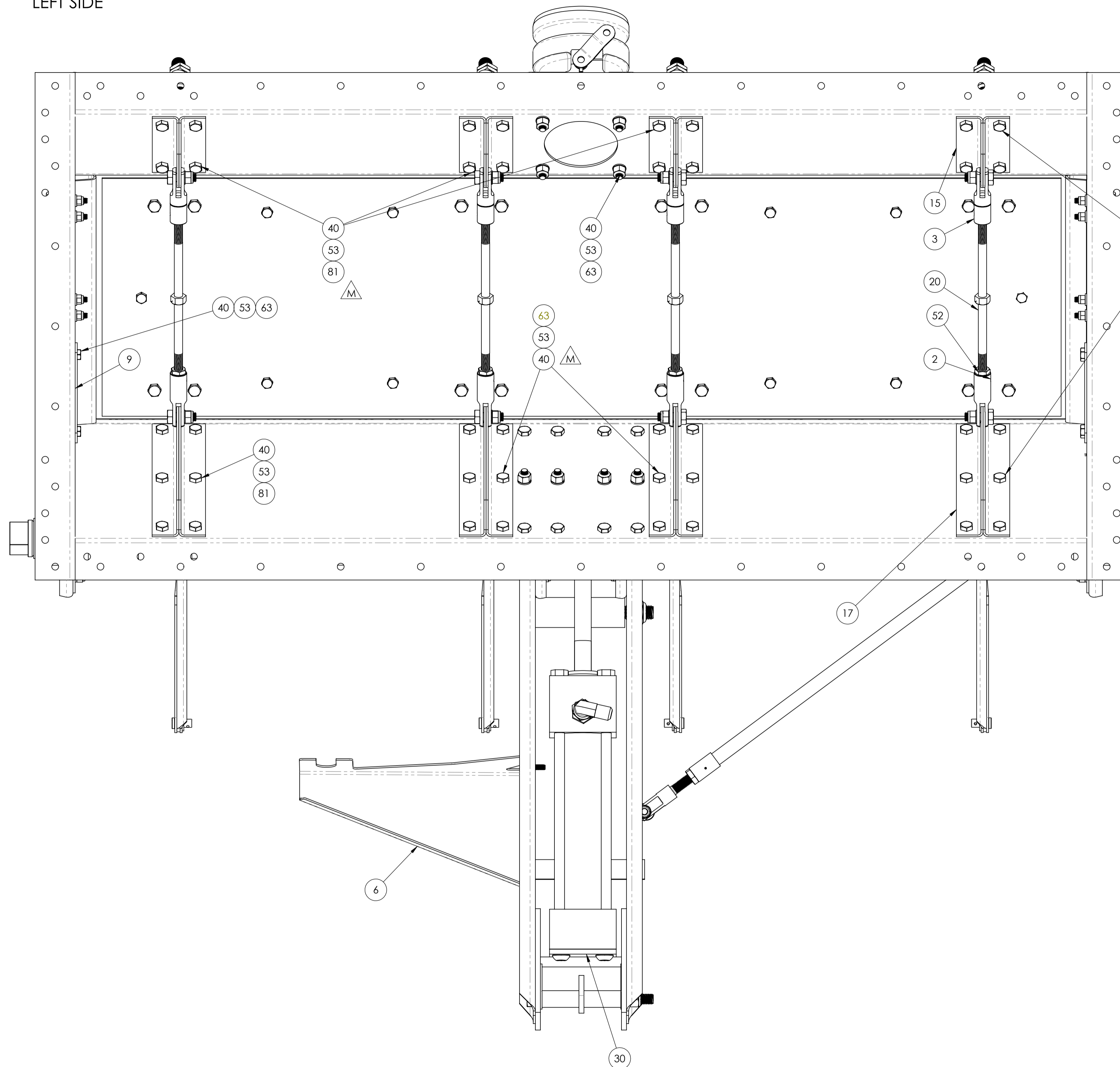
REV.	E.O #	DESCRIPTION	BY	DATE	APPR'D	DATE
V	9526	REMOVED ITEM NO. 82-88	RC	11/16/2016	CLK	11/23/2016
U	7764	ITEM #72 23625 QTY. 1 CHANGE TO 53625 QTY. 1 ; ITEM #63 CHANGE QTY. 77 TO 73 ; ITEM #41 CHANGE QTY. 19 TO 15 ; ITEM #40 CHANGE QTY. 75 TO 79	RC	1/11/2016	CLK	1/13/2016
T	7490	CHANGE QTY ON ITEM #36 FROM 2 TO 8, #62 FROM 13 TO 20, #74 FROM 8 TO 12 ; CHANGE ITEM #67 FROM 80591, QTY 4 TO 82048, QTY 8 ; DELETE ITEM #78, QTY 2.	RC	10/24/2015	CLK	10/25/2015
R	4765	ITEM 82 WAS 56352	LDT	9/18/2013	JMV	9/20/2013
P	42313	ADDED SHEET 4; ADDED ITEMS 82 THRU 88	LDT	4/30/2013	JMV	5/2/2013
N	4203	ITEM 19 QTY 1 WAS 2; ITEM 40 QTY 76 WAS 48; ITEM 41 QTY 19 WAS 34; ITEM 42 QTY 5 WAS 1; ITEM 43 QTY 8 WAS 16; ITEM 48 QTY 4 WAS 8; ITEM 53 QTY 105 WAS 104; ITEM 55 QTY 12 WAS 8; ITEM 63 QTY 77 WAS 76; ITEM 64 QTY 16 WAS 15;	LDT	4/25/2013	JMV	4/27/2013
M	4013	#41 (80108) QTY 34 WAS 62; #55 (80562) QTY 8 WAS 13; #63 (81230) QTY 76 WAS 104; #64 (81233) QTY 15 WAS 20; DELETED #45 (80242) QTY 5; ADDED #81 (81277) QTY 28; ADDED 1/16 X 1/2 WELD TYP 10X	PK	2/22/13	JMV	2/25/13
L	3964	#51 P/N 80628 QTY 16 WAS 12	PK	2/7/13	JMV	2/8/13
K	3629	ITEM 25 P/N 23102 QTY 4 WAS 1; ITEM 24 P/N 26610 WAS 22610; ADDED ITEM 80 P/N 18344 QTY 2	PK	11/21/12	JMV	11/23/12
J	3379	REMOVED #65 PN 81237 QTY 3; #34 P/N 44356 QTY 1; #49 P/N 80513 QTY ; ADDED #79 P/N 80001 QTY 2; (BOTTOM VIEW SHEET 3)	PK	9/28/12	JMV	10/1/12
H	2392	DEL #58 (80572) QTY 1; #44 P/N 80624 QTY 1 WAS 80329; #65 P/N 81237 QTY 3 WAS 4; ADDED ITEM 78 P/N 45204 QTY 2; CORRECTED VIEWS ON HOOKS & HARDWARE	PK	1/05/12	JMV	1/07/12
G	2198	CORRECTED BALLOON 7 ON SHT 3	PK	11/29/11	JMV	12/2/11
F		REVISED/UPDATED & REDRAWN	MdG	3/16/07	-	-
E		CHANGED ITEM# 53 TO P/N 80559	MdG	11/1/06	-	-
D		REVISED & REDRAWN TO CAD	SCM	7/22/02	-	-
REV.	E.O #	DESCRIPTION	BY	DATE	APPR'D	DATE

ENGINEERING APPROVED COPY FOR MANUFACTURE

<table border="1"> <tr><td>DRAWN</td><td>MARSELOS</td><td>7/22/02</td></tr> <tr><td>CHECKED</td><td>RR</td><td>11/21/16</td></tr> <tr><td>ENG APPR</td><td>CLK</td><td>11/23/16</td></tr> </table>	DRAWN	MARSELOS	7/22/02	CHECKED	RR	11/21/16	ENG APPR	CLK	11/23/16	<p>UNLESS OTHERWISE SPECIFIED: DIMENSIONS ARE IN INCHES TOLERANCES: FRACTIONS ±1/16 XXX ±.03 XXX ±.010 ANGLE ±1/2°</p> <p>HOLE DIA. .0135 - .125 DIA. +.004 - .001 .1360 - .250 DIA. +.005 - .001 .2510 - .500 DIA. +.006 - .001 .5010 - .750 DIA. +.008 - .001 .7510 - 1.000 DIA. +.010 - .001</p> <p>REMOVE ALL BURRS AND SHARP EDGES INTERPRET DRAWING PER ANSI Y14.5M-1982 SURFACE ROUGHNESS PER MIL-STD-10 ALL MACHINED SURFACES NOT TO EXCEED 63 MICRONS PER MIL-STD-10 UNLESS NOTED</p> <p>SolidWorks</p>	<p>TRANS LAND</p> <p>TITLE: ASSEMBLY - 38" FIRE GATE BOX AIR TRACTOR</p> <p>SIZE D DWG. NO. 25150 REV V</p> <p>SCALE: 1:8 WEIGHT: SHEET 1 OF 3</p>
DRAWN	MARSELOS	7/22/02									
CHECKED	RR	11/21/16									
ENG APPR	CLK	11/23/16									

LEFT SIDE

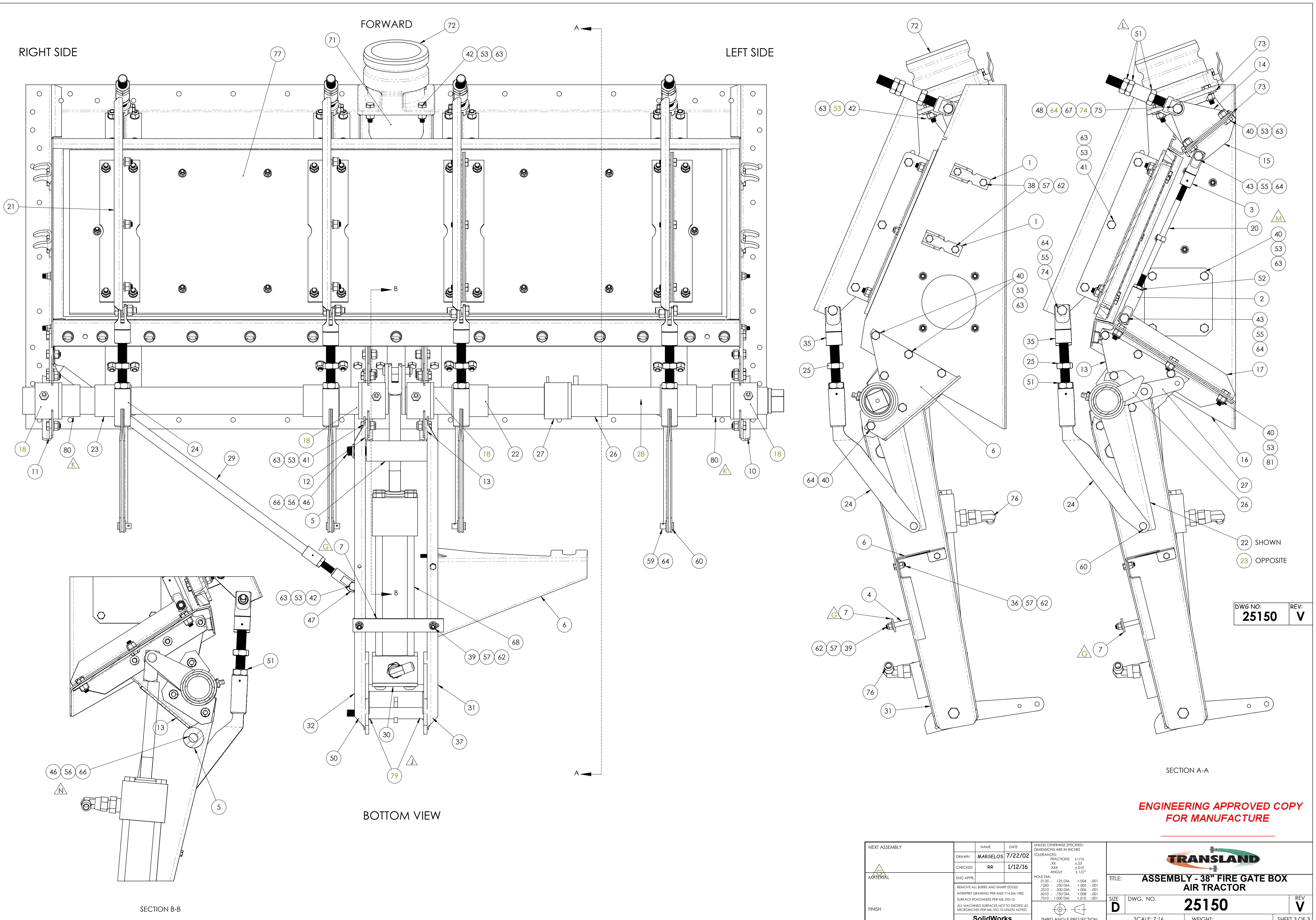
RIGHT SIDE



DWG NO: **25150** REV: **V**

**ENGINEERING APPROVED COPY
FOR MANUFACTURE**

NEXT ASSEMBLY	NAME	DATE	UNLESS OTHERWISE SPECIFIED: DIMENSIONS ARE IN INCHES TOLERANCES: FRACTIONS ±1/16 XXX ±.03 XXX ±.010 ANGLE ±1/2°	
	DRAWN	MARSELOS		
MATERIAL	CHECKED	RR	1/12/16	HOLE DIA: .0135 - .125 DIA. +.004 -0.001 .1300 - .250 DIA. +.005 -0.001 .2510 - .500 DIA. +.006 -0.001 .5010 - .750 DIA. +.008 -0.001 .7510 - 1.000 DIA. ±.010 -0.001
	ENG APPR.			
FINISH	REMOVE ALL BURRS AND SHARP EDGES INTERPRET DRAWING PER ANSI Y14.5M-1992 SURFACE ROUGHNESS PER MIL-STD-10 ALL MACHINED SURFACES NOT TO EXCEED 63 MICRONS PER MIL-STD-10 UNLESS NOTED			TITLE: ASSEMBLY - 38" FIRE GATE BOX AIR TRACTOR SIZE D DWG. NO. 25150 REV V SCALE: 7:16 WEIGHT: SHEET 2 OF 3



DWG NO: **25150** REV: **V**

ENGINEERING APPROVED COPY FOR MANUFACTURE

<p>UNLESS OTHERWISE SPECIFIED: DIMENSIONS ARE IN INCHES</p> <p>FRACTIONS: 1/16 DECIMALS: ±.03 XXX ±.010 ANGLE: ± 1/2°</p>	<p>NAME: MARSELOS DATE: 7/22/02</p> <p>DRAWN: RR CHECKED: RR 1/12/16</p> <p>ENG APPR:</p>	<p>REMOVE ALL BURRS AND SHARP EDGES</p> <p>INTERPRET DRAWING PER ANSI Y14.5M-1982</p> <p>SURFACE ROUGHNESS PER MIL-STD-10</p> <p>ALL MACHINED SURFACES NOT TO EXCEED 63 MICRONS PER MIL-STD-10 UNLESS NOTED</p> <p>SolidWorks</p>
---	---	--

<p>TITLE: ASSEMBLY - 38" FIRE GATE BOX AIR TRACTOR</p>	
<p>SIZE: D</p>	<p>DWG. NO. 25150</p>
<p>SCALE: 7:16</p>	<p>REV: V</p>
<p>WEIGHT:</p>	<p>SHEET 3 OF 3</p>

SECTION B-B

SECTION A-A