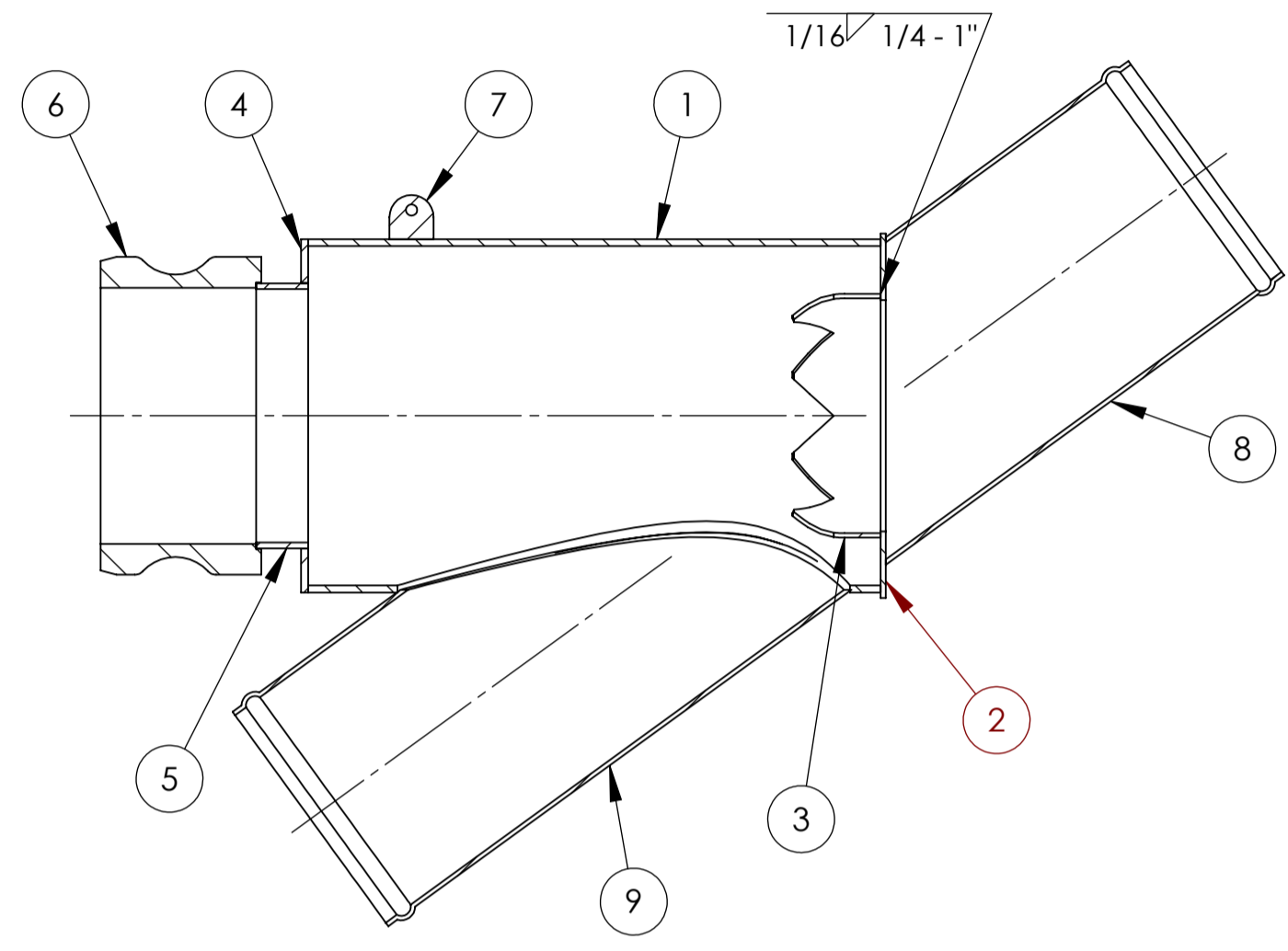
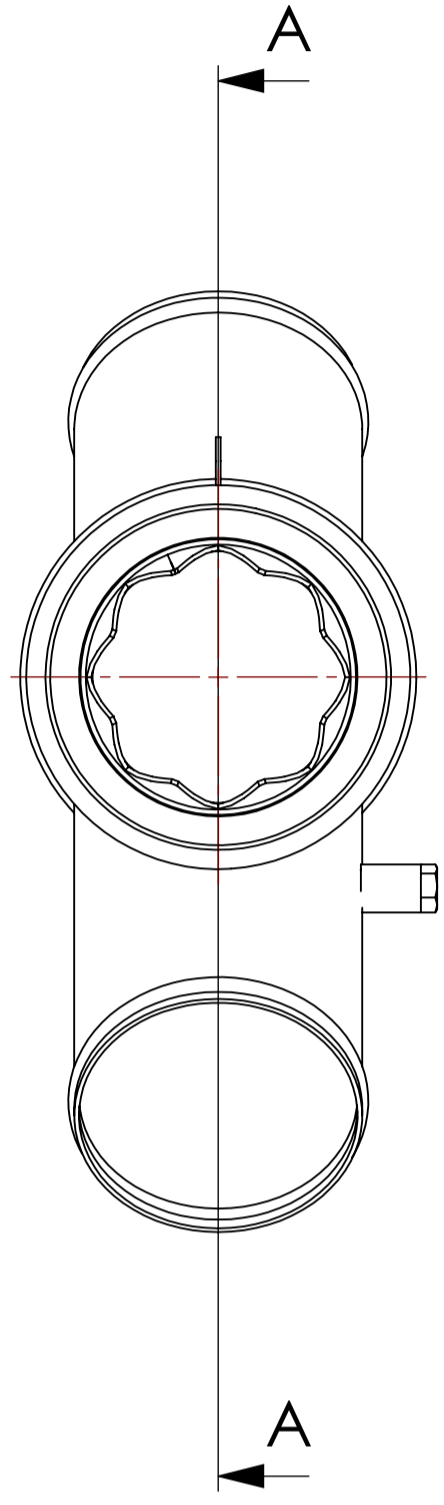
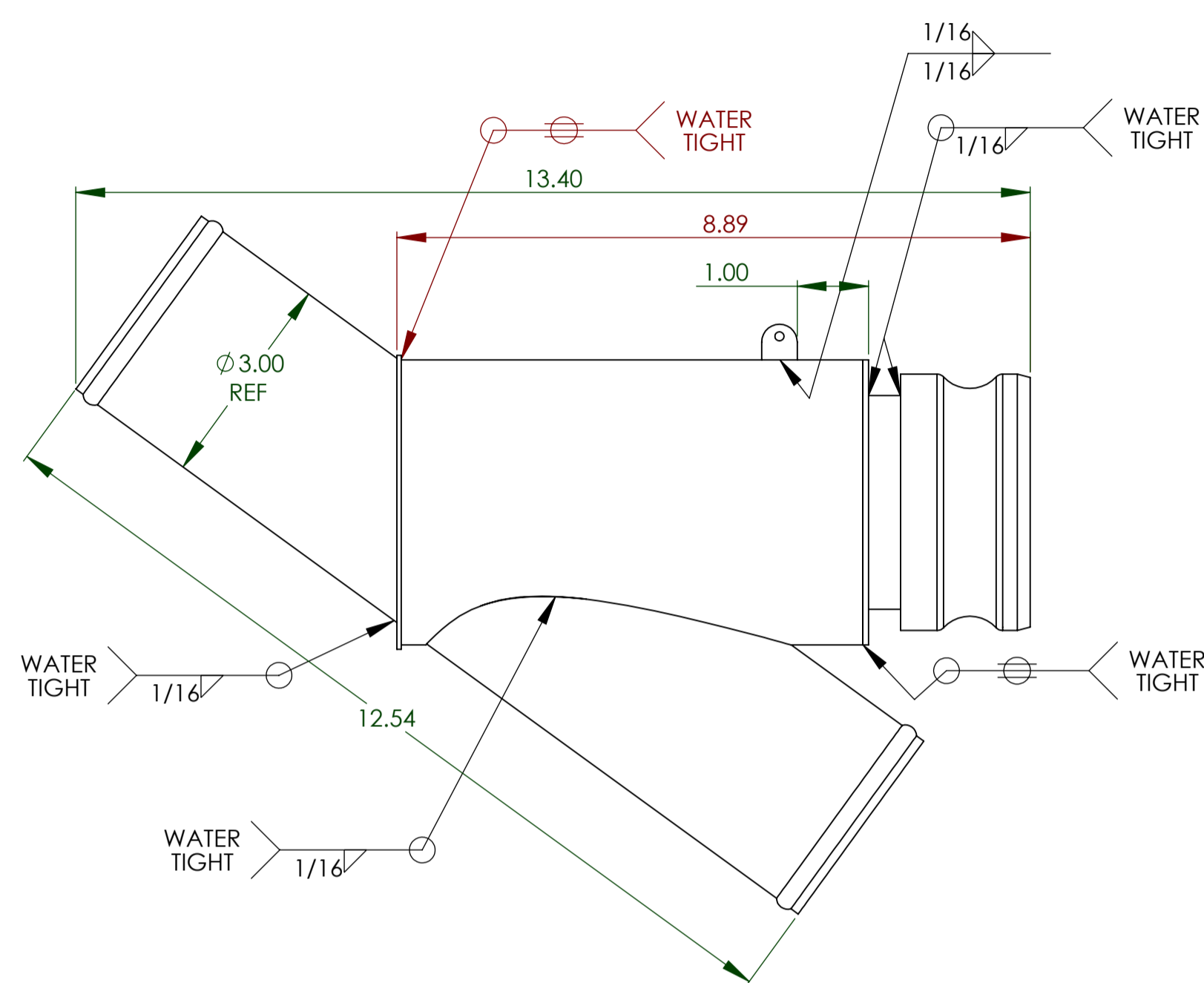


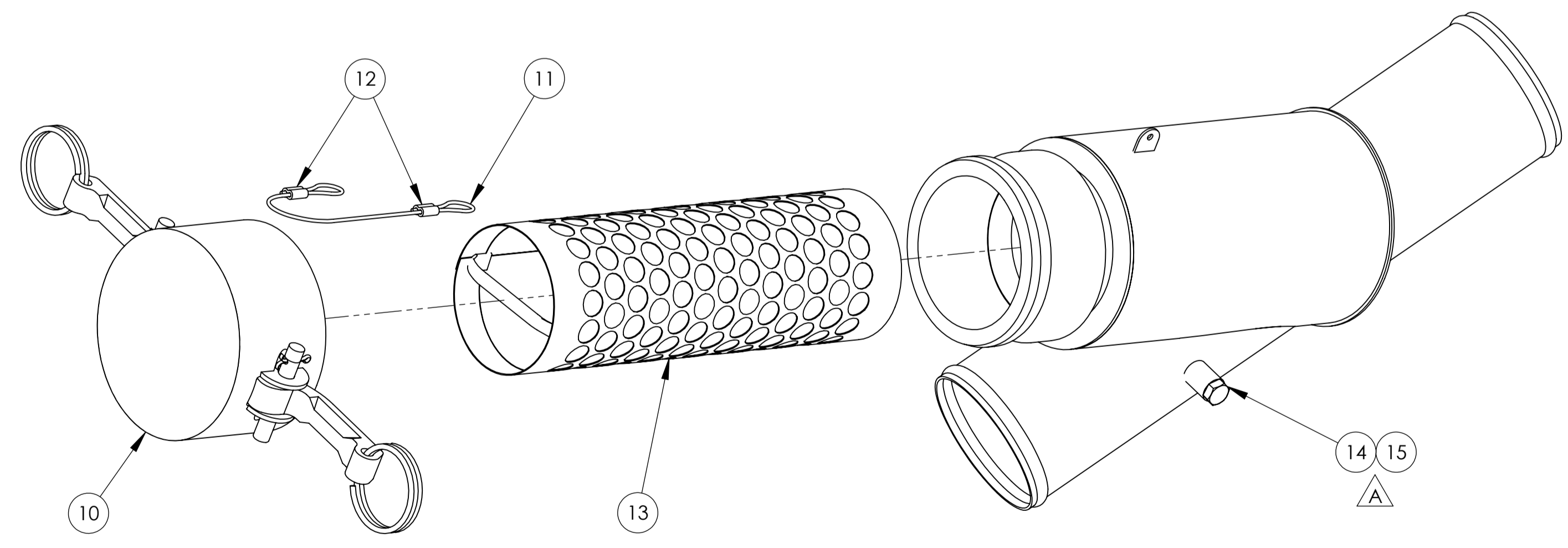
NOTES:

1. SUPERSEDES P/Ns 50636 & 59036
2. ITEM 11 TO AFFIX ITEM 10 WITH ITEM 7.
3. ITEM 11 TO BE TRIMMED TO LENGTH AT ASSEMBLY.
4. ITEM 13 MAY BE REPLACED WITH 29539 (SCREEN ASSY - 40 MESH) PER CUSTOMER REQUEST.
5. ITEM 13 MAY BE REPLACED WITH 29541 (SCREEN ASSY - 20 MESH) PER CUSTOMER REQUEST.
6. PRESSURISE WITH WATER OVER 65psi AND ENSURE LESS THAN 6 DROPS PER MIN FROM ALL LEAK POINTS.

ITEM NO.	PART NO.	DESCRIPTION	QTY
1	13498	TUBE - BODY	1
2	14498	PLATE - BASE	1
3	13428	CAP - SCREEN	1
4	14613	PLATE - BASE	1
5	16551	TUBE - SPACER	1
6	41052	QD - 3" MALE	1
7	14279	TAB	1
8	13497	TUBE - INLET	1
9	13496	TUBE - OUTLET	1
10	56504	DUST CAP - 3"	1
11	85100	CABLE - .062" DIA	AR
12	85710	SLEEVE	2
13	29540	SCREEN ASSY - 30 MESH	1
14	41950	FEMALE NIPPLE	1
15	81175	BRASS PLUG	1



SECTION A-A



DWG NO: **59136** REV: **A**

REV.	E.O.	DESCRIPTION	BY	DATE	APPR'D	DATE
A	11191	ADD QTY 1 41950, 1/8" FEMALE NIPPLE AND QTY 1 81175, BRASS PLUG; UPDATED REV BLOCK	LA	11/28/2017	CK	12/13/17

**ENGINEERING APPROVED COPY
FOR MANUFACTURE**

NEXT ASSEMBLY	FINAL	NAME	JMV	DATE	7/13/11	UNLESS OTHERWISE SPECIFIED: DIMENSIONS ARE IN INCHES TOLERANCES: FRACTIONS ±.01 DECIMALS ±.005 ANGLES ±.01°		TITLE:	SST LINE STRAINER, 3" WITH QD CAP	REV:	A
MATERIAL	SEE BOM	CHECKED	R.R.	7/13/11	7/13/11			SIZE	D	DWG. NO.	59136
FINISH		ENG APPR:				THIRD ANGLE PROJECTION		WEIGHT:	??		SHEET 1 OF 1