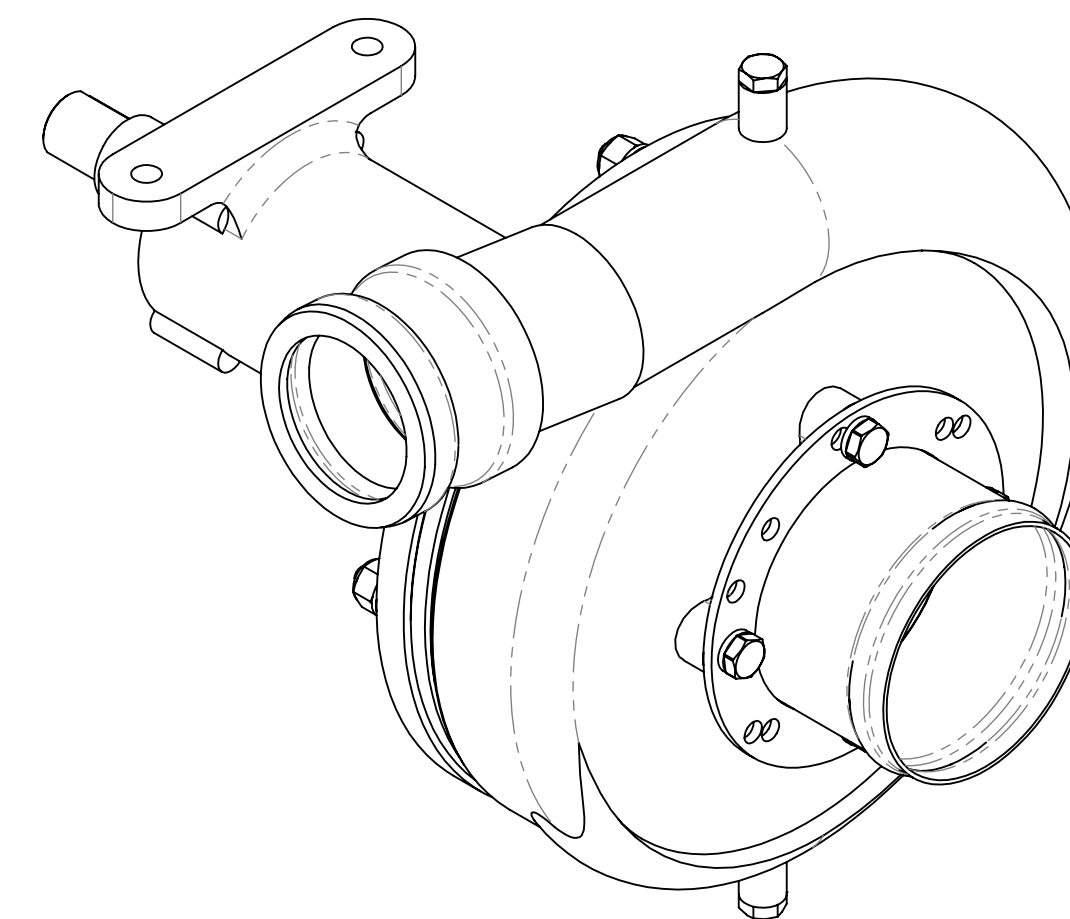
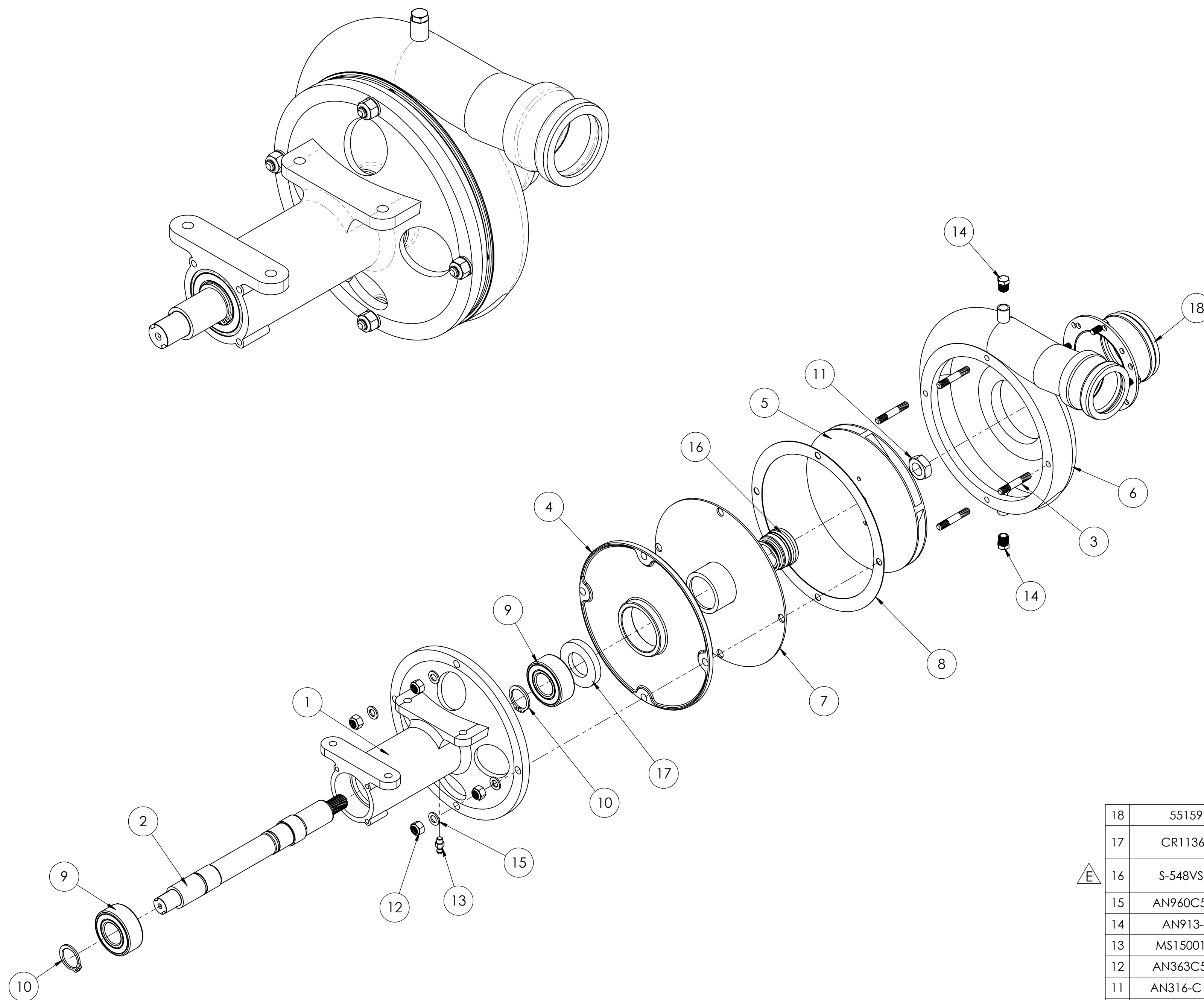
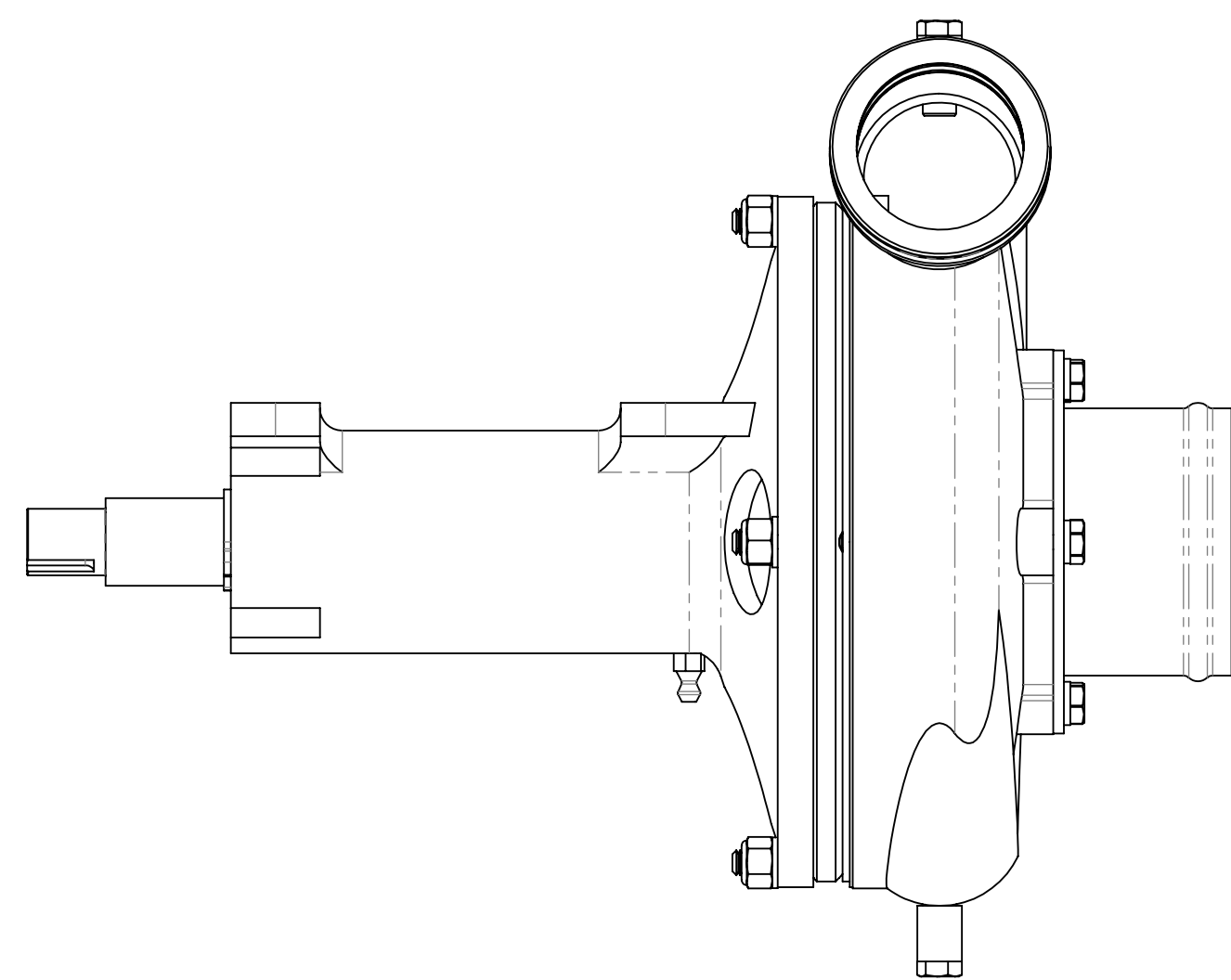


NOTES (UNLESS OTHERWISE SPECIFIED)

1. THE PART MUST BE WATER TESTED. BLOCK OFF ONE OF THE PORTS AND ATTACH A WATER SUPPLY THAT IS AT LEAST 60 PSI. PRESSURE UP THE PART AND MAKE SURE ANY LEAKS ARE LESS THAN SIX DROPS IN A MINUTE.
2. PART MUST BE IDENTIFIED PER DRAWING NO. 60321
3. SERVICE KIT FOR THIS PART IS A '51626'.



DWG NO: **55605** REV: **E**

**ENGINEERING APPROVED COPY
FOR MANUFACTURE**

ITEM NO.	PART NO.	NO. REQD	DESCRIPTION	SIZE	SPEC.	NO. REQD	NEXT ASSEMBLY	FINAL ASSEMBLY
18	55159	1	INLET ASSY					
17	CR11366	1	GREASE SEAL, KAMAN INDUSTRIAL TECHNOLOGIES (86176)					
16	S-548VSC	1	SEAL SHAFT, FLOWSERVE FSD CORPORATION (85687)					
15	AN913-1	4	FLAT WASHER (81233)					
14	AN913-1	2	PLUG (81175)					
13	MS15001-1	1	GREASE FITTING 1/4-28 UNF (80603)					
12	AN363C524	4	NUT NYLOCK (80563)					
11	AN316-C10R	1	CHECK NUT (80524)					
10	74568	2	SNAP RING					
9	71548	2	BEARING 6.5" PUMP					
8	60662	1	GASKET (21363 PUMP)					
7	51926	1	WELD ASSY - SEAL CUP 6.5" PUMP					
6	54605	1	VOLUTE ASSY - 2" OUTLET					
5	50782	1	IMPELLER SST 6.5" SPRAY PUMP					
4	44363	1	BACK PLATE 6.5" PUMP					
3	40804	4	STUD - SPRAY PUMP					
2	43797	1	SHAFT 6.5" LANE BRAKE					
1	40785	1	BEARING HOUSING - SPRAY PUMP					

REV.	E.O.	DESCRIPTION	BY	DATE	APPR'D	DATE
E	9411	CHANGED ITEM 85689 TO 85687	RC	10/20/2016	CLK	10/24/2016
D	8929	NEW TITLE BLOCK	RC	6/24/2016	CLK	6/28/2016
C	6449	ADDED GENERAL NOTES 1-3	KGR	4/9/2015	CLK	4/10/2015
B	5674	ITEM NO. 2 - 44363 WAS PN-44362	PK	7/25/2014	JMV	7/26/2014
A	5609	ITEM NO. 2 - 43797. WAS PN-40797	PK	7/11/2014	JMV	7/13/2014
NC	4499	INITIAL RELEASED	PK	8/15/2013	JMV	8/16/2013
REV.	E.O.	DESCRIPTION	BY	DATE	APPR'D	DATE

REVISIONS

NAME	DATE	UNLESS OTHERWISE SPECIFIED: DIMENSIONS ARE IN INCHES
DRAWN PK	8/15/13	TOLERANCES: FRACTIONS ±1/16 XX ±.03 XXX ±.010 ANGLE ±1/2°
CHECKED RR	10/24/16	HOLE DIA: .0135 - .125 DIA. +.004 - .001 .1260 - .250 DIA. +.005 - .001 .2510 - .500 DIA. +.006 - .001 .5010 - .750 DIA. +.008 - .001 .7510 - 1.000 DIA. +.010 - .001
ENG APPR. CLK	10/24/16	REMOVE ALL BURRS AND SHARP EDGES INTERPRET DRAWING PER ANSI Y14.5M-1992 SURFACE ROUGHNESS PER MIL-STD-10 ALL MACHINED SURFACES NOT TO EXCEED 63 MICRONS PER MIL-STD-10 UNLESS NOTED
SolidWorks		THIRD ANGLE PROJECTION

TRANSLAND
1206 HAITON ROAD, WICHITA FALLS, TX 76302

TITLE: **SPRAY PUMP 6 1/2" SS - 2" OUTLET
W/O BRAKE**

SIZE **D** DWG. NO. **55605** REV **E**

SCALE: NTS MODEL: SHEET 1 OF 1