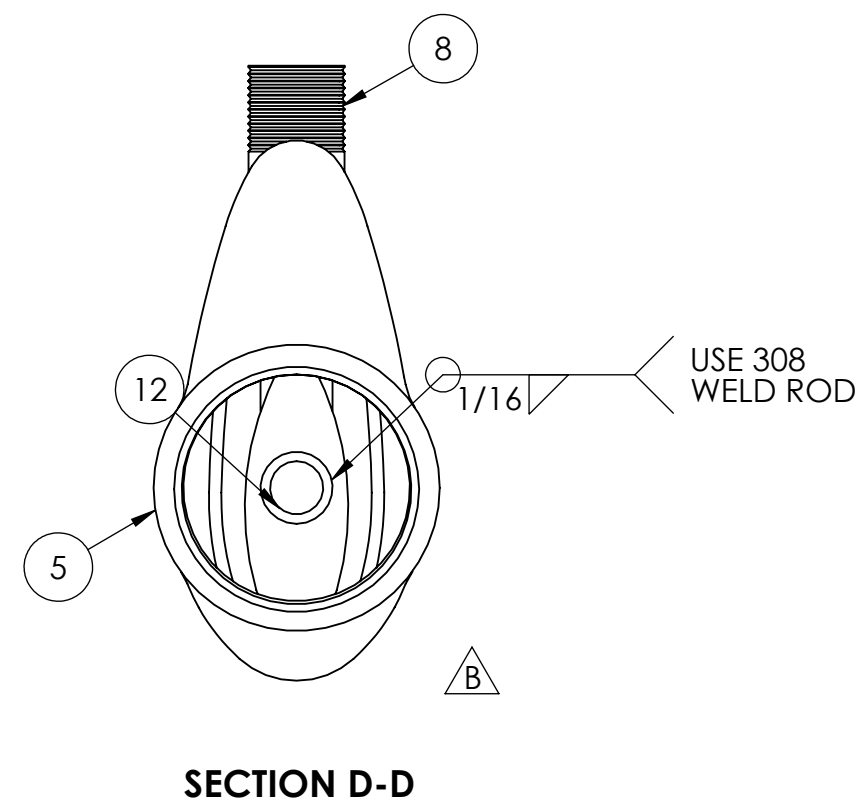
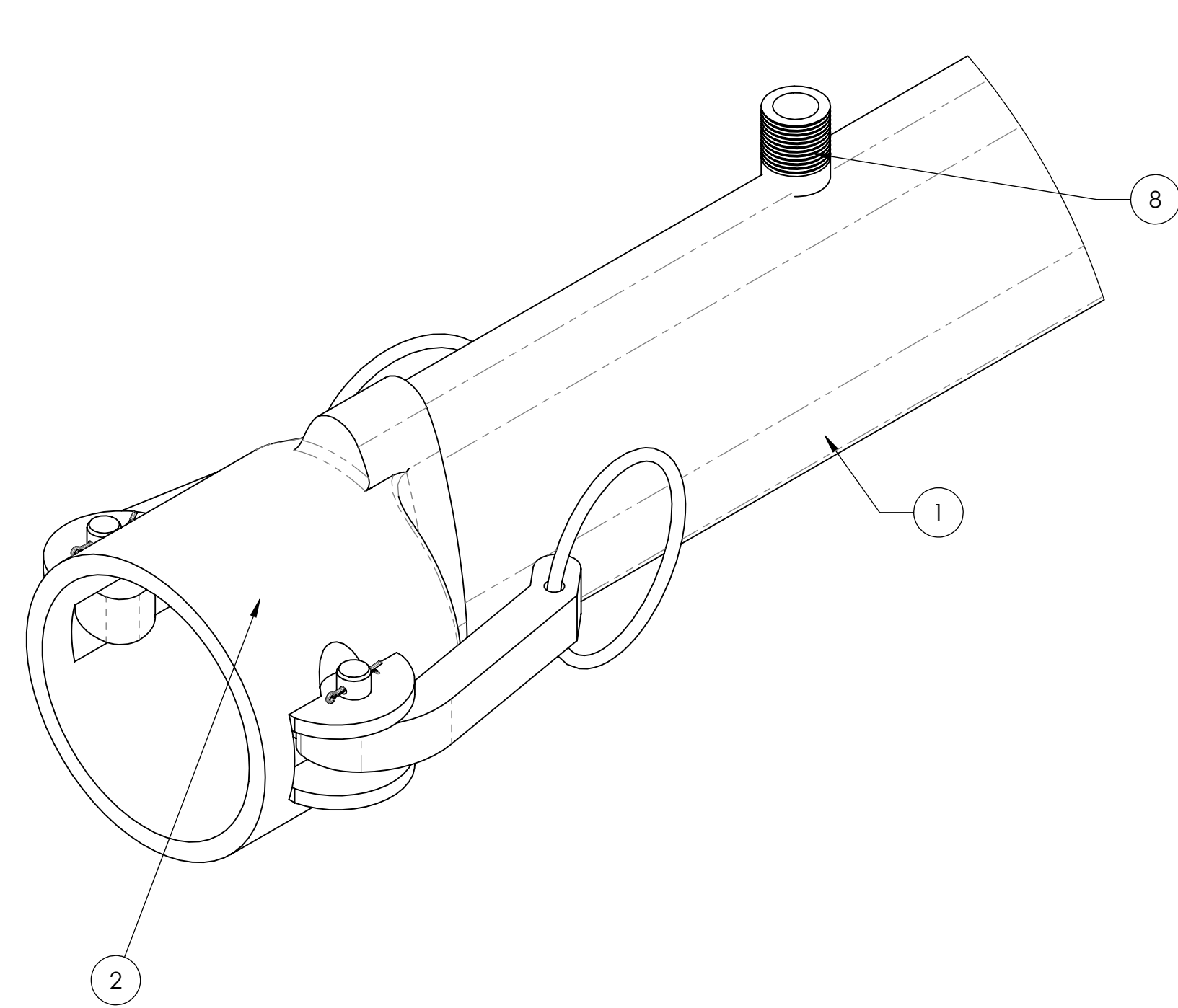


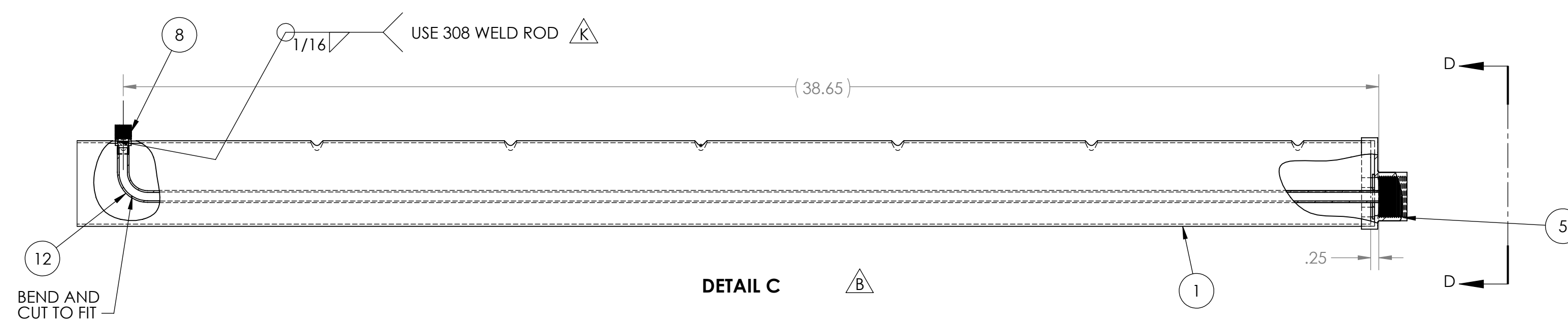
NOTES (UNLESS OTHERWISE SPECIFIED)
 1. WELDING TO BE COMPLETED PER DOC. NO. TQ34



HOLES TABLE	
No.	X
1	4.25
2	10.05
3	15.85
4	21.65
5	27.45
6	33.25
7	39.05
8	44.74
9	50.43
10	56.12
11	61.81
12	67.50
13	73.19
14	78.88
15	84.57
16	90.26
17	96.02
18	101.78
19	107.54
20	113.30
21	119.06
22	124.82
23	130.58
24	136.34
25	142.10
26	148.06
27	154.02
28	159.98
29	165.94
30	171.90
31	178.25

ALL HOLES SIZE = 3/8

ATTENTION
STC OR PMA CONTROLLED PART



**ENGINEERING APPROVED COPY
 FOR MANUFACTURE**

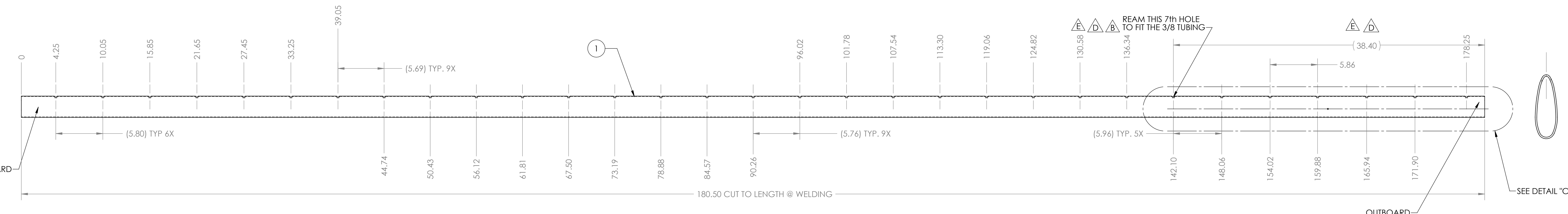
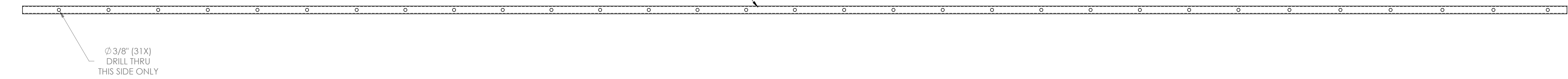
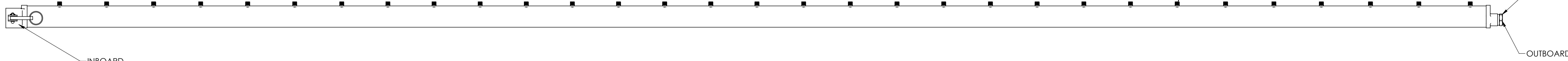
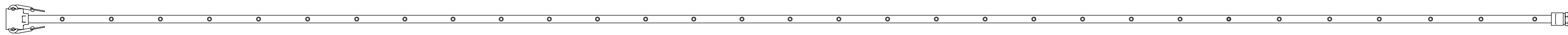
REV.	E.O.#	DESCRIPTION	BY	DATE	APPRVD	DATE
K	10310	REMOVED "WATER TIGHT" FROM NOTES	RC	5/16/17	CLK	5/17/17
J	9277	REMOVE ITEM NO. 3,4,9,10 & 11	RC	9/16/16	CLK	9/19/16
H	9119	ADDED BUBBLES 2 AND 7	CAS	8/18/16	CLK	8/19/16
G	9004	ITEM 10 WAS AN416-2	CAS	6/30/16	CLK	6/30/16
F	8569	CHANGED NEXT & FINAL ASSY. TO 98517	RC	4/20/16	CLK	4/20/16
E	5154	MOVED BLEED BACK TUBE TO 7th HOLE, ITEM 11 P/N 89596 WAS 13686 DIM. (38.65) WAS (26.73) & (38.40) WAS (26.48), ADDED NOTE #1, UPDATED WELD SYMBOLS	PK	1/27/14	JMV	1/27/14
D	4061	MOVED BLEED BACK TUBE TO 5th HOLE, DIM. (26.66) WAS (20.80), 26.48 WAS 20.62	PK	3/12/13	JMV	3/2/13
C	2515	E.O. 2515 DELETED ITEM 12 P/N 13621, #13 P/N 13614, ITEM #11 P/N 13686 WAS 13620	PK	5/3/12	JMV	5/3/12
B	2561	E.O. 02561: ADDED ITEM 11, 12, 13, DETAIL "C", SECTION D-D & WELD SYMBOLS, P/N 85710 QTY 2 WAS 1	PK	4/3/12	JMV	4/3/12
NC	702	E.O. #0702: INITIAL RELEASED	PK	11/16/10	JMV	11/16/11

REVISIONS

ITEM NO.	PART NO.	NO. REQD	DESCRIPTION	SIZE	SPEC.	NO. REQD	NEXT ASSEMBLY	FINAL ASSEMBLY
12	89596	1	TUBE, BLEED BACK - LENGTH A/R					
11							MSS1844-4	
10							COMMERICAL	
9							MIL-W83420	
8	41060	31	1/8" MALE NIPPLE SST.					
7	41057	1	PLUG					
5	41017	1	OUTBOARD END CAP 1" FEMALE					
4								
3								
2	50727	1	1-1/2" SST STREAMLINE COUPLING ASSY					
1	55100	1	2" BOOM 180-1/2" LG			1	98517	98517

DRAWN: PK 11/12/10 CHECKED: RR 5/17/17 ENGR APPR: CLK 5/17/17 REMOVE ALL BURRS AND SHARP EDGES INTERPRET DRAWING PER ANSI Y14.5M-1982 SURFACE ROUGHNESS PER MIL-STD-10 ALL MACHINED SURFACES NOT TO EXCEED A3 MICRONS PER MIL-STD-10 UNLESS NOTED	UNLESS OTHERWISE SPECIFIED: DIMENSIONS ARE IN INCHES TOLERANCES: FRACTIONS ±1/16 XX ±.05 XXX ±.010 ANGLE ±1/2" HOLE DIA: .0135 - .125 DIA. +.004 - .001 .126 - .250 DIA. +.005 - .001 .251 - .500 DIA. +.006 - .001 .501 - .750 DIA. +.008 - .001 .751 - 1.000 DIA. +.010 - .001	 1206 HATTON ROAD, WICHITA FALLS, TX 76302 THRUSH SST BOOM TITLE:	SIZE: B DWG. NO.: 55403 SCALE: NTS MODEL: S2R SHEET 1 OF 2	REV: K
---	--	---	---	--------

NOTES (UNLESS OTHERWISE SPECIFIED)
 1. WELDING TO BE COMPLETED PER DOC. NO. TQ34



HOLES TABLE	
No.	X
1	4.25
2	10.05
3	15.85
4	21.65
5	27.45
6	33.25
7	39.05
8	44.74
9	50.43
10	56.12
11	61.81
12	67.50
13	73.19
14	78.88
15	84.57
16	90.26
17	96.02
18	101.78
19	107.54
20	113.30
21	119.06
22	124.82
23	130.58
24	136.34
25	142.10
26	148.06
27	154.02
28	159.98
29	165.94
30	171.90
31	178.25

ALL HOLES SIZE = 3/8

**ENGINEERING APPROVED COPY
FOR MANUFACTURE**

<small>UNLESS OTHERWISE SPECIFIED: DIMENSIONS ARE IN INCHES TOLERANCES: FRACTIONS ±1/16 XX ±.03 XXX ±0.10 ANGLE ±1/2°</small>	 1206 HATTON ROAD, WICHITA FALLS, TX 76302	
	TITLE: THRUSH SST BOOM	
SIZE B	DWG. NO. 55403	REV K
SCALE: NTS	MODEL: S2R	SHEET 2 OF 2