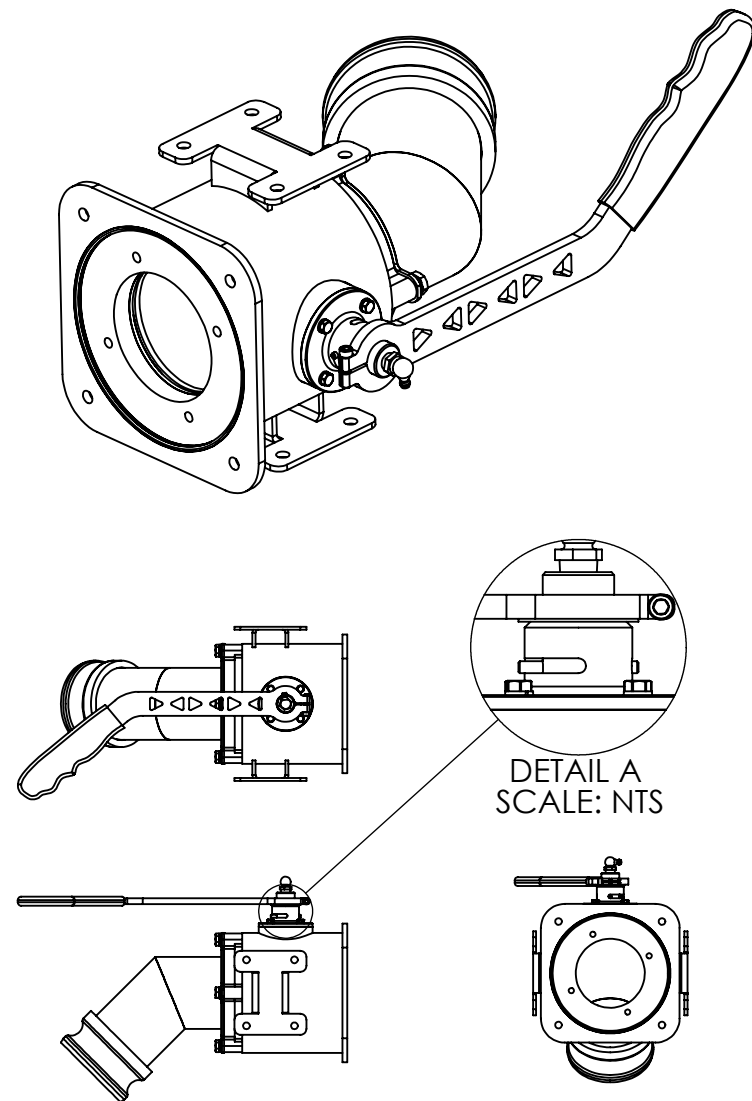


**NOTES (UNLESS OTHERWISE SPECIFIED)**

- ARM SHOWN IN OPEN POSIION IN ALL VIEWS
- P/N 24072 (WRENCH) TO BE SHIPPED WITH VALVE

**ENGINEERING APPROVED COPY  
FOR MANUFACTURE**



ITEM NO.	PART NO.	NO. REQD	DESCRIPTION	SIZE	SPEC.	NO. REQD	NEXT ASSEMBLY	FINAL ASSEMBLY
			MATERIAL					
H	22	4	WASHER, LOCK (81195)					
F	21	4	BOLT, HX HD (80102)					
D	20	1	SCREW (80180)					
	19	4	BOLT, HX HD (80373)					
C	18	4	WASHER, LOCK, MCMASTER CARR (80778)		COMM.			
	17	1	ROLL PIN (86310)					
	16	1	GREASE FITTING (86180)					
	15	1	GRIP, MCMASTER CARR (82326)		COMM.			
	14	1	O-RING (81633)					
	13	1	O-RING (81632)					
	12	1	O-RING (81603)					
	11	1	O-RING (81631)					
	10	1	ARM					
	9	1	WASHER					
	8	1	VALVE STEM					
	7	1	VALVE STEM HOUSING					
G	6	1	PLUG CAP/SST VLV WHITE TEFLON					
	5	1	ENDCAP					
	4	1	RING SEAT					
	3	1	BALL					
	2	2	TEFLON SEAT					
	1	1	3" SST LOADER VALVE BODY FINAL WELDMENT					

REV.	E.O.	DESCRIPTION	BY	DATE	APPR'D	DATE
H	8920	NEW TITLE BLOCK	RC	6/22/16	CLK	6/28/16
G	3647	ADDED ITEM 6 P/N 15695 QTY 1 & NOTE 2	PK	11/29/12	JMV	11/30/12
F	0915	ITEM 21 PN-80102 WAS 80104	PK	2/24/11	JMV	2/25/11
E	-	REDRAWN & UPDATED GEOMETRY TO REFLECT CHANGES TO PARTS	JMV	12/14/09	JMV	12/16/09
D	-	80104 WAS 80108	JMV	12/9/09	JMV	12/10/09
C	-	81195 WAS 81203 ; 80778 WAS 81202	JMV	10/13/09	JMV	10/15/09
B	-	REDESIGN	JMV	7/28/09	JMV	7/29/09

UNLESS OTHERWISE SPECIFIED:  
DIMENSIONS ARE IN INCHES

TOLERANCES:

FRACTIONS	±1/16
.XX	±.03
.XXX	±.010
ANGLE	± 1/2°

HOLE DIA:

.0135 - .125 DIA.	+0.04	-0.01
.1260 - .250 DIA.	+0.05	-0.01
.2510 - .500 DIA.	+0.06	-0.01
.5010 - .750 DIA.	+0.08	-0.01
.7510 - 1.000 DIA.	+0.10	-0.01

REMOVE ALL BURRS AND SHARP EDGES  
INTERPRET DRAWING PER ANSI Y14.5M-1982  
SURFACE ROUGHNESS PER MIL-STD-10  
ALL MACHINED SURFACES NOT TO EXCEED 63  
MICROINCHES PER MIL-STD-10 UNLESS NOTED

**SolidWorks**

THIRD ANGLE PROJECTION

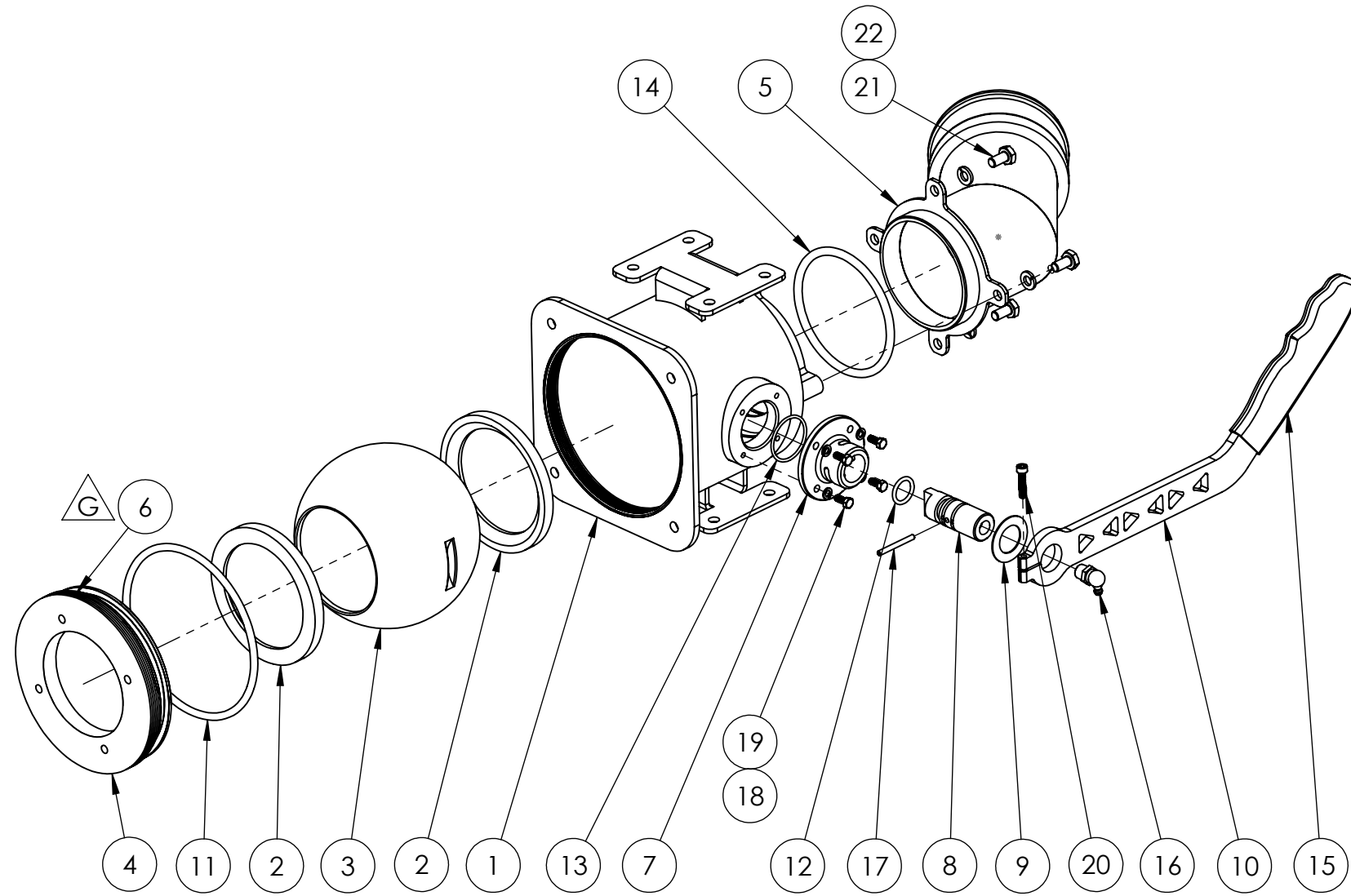
**TRANSLAND**

1206 HATTON ROAD, WICHITA FALLS, TX 76302

TITLE: **3" SST LH, A/T LOAD VALVE**

SIZE **B** DWG. NO. **54800** REV **H**

SCALE: NTS MODEL: SHEET 1 OF 2



1206 HATTON ROAD, WICHITA FALLS, TX 76302

TITLE: 3" SST LH, A/T LOAD VALVE

SIZE <b>B</b>	DWG. NO. <b>54800</b>	REV <b>H</b>
SCALE: NTS		SHEET 2 OF 2