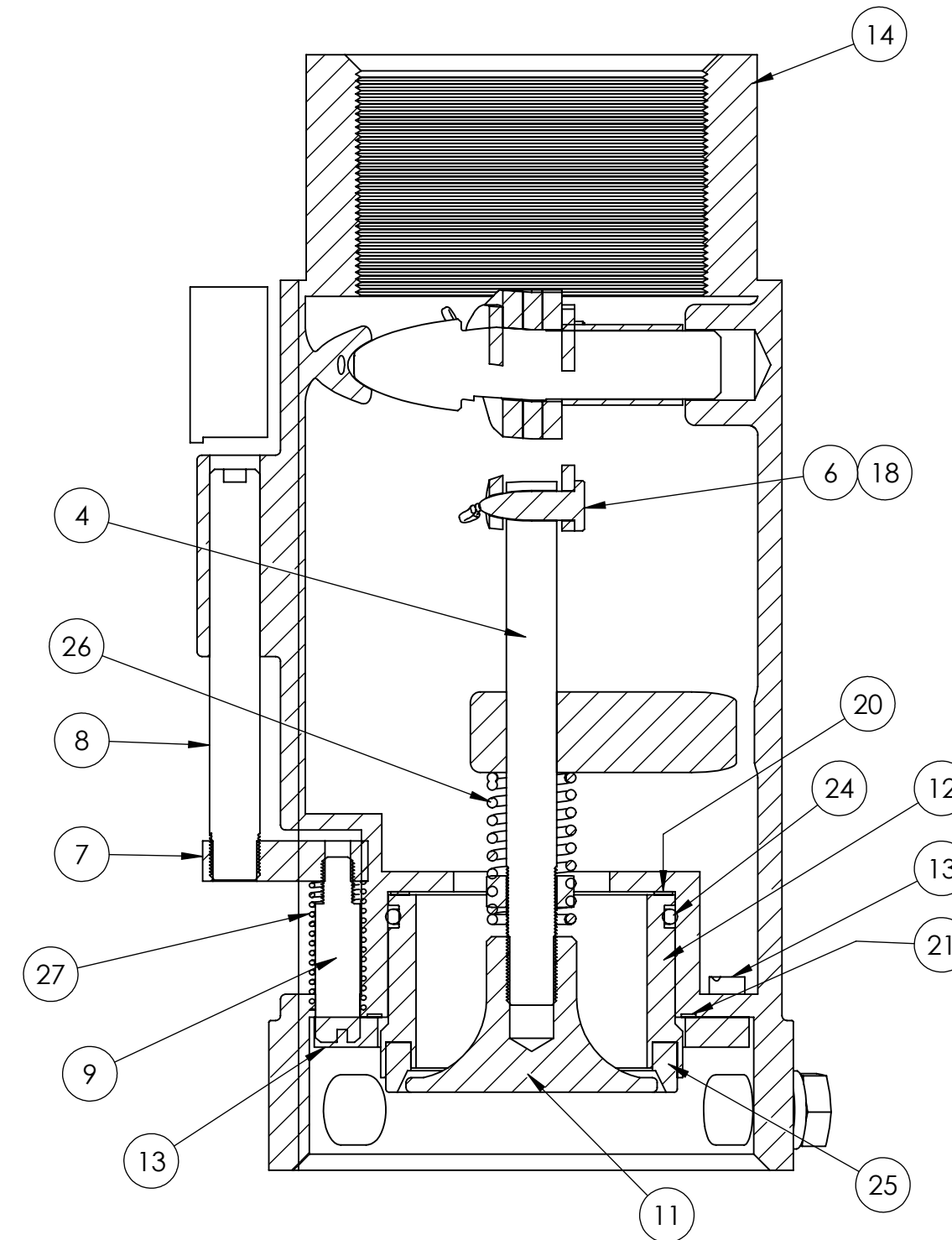
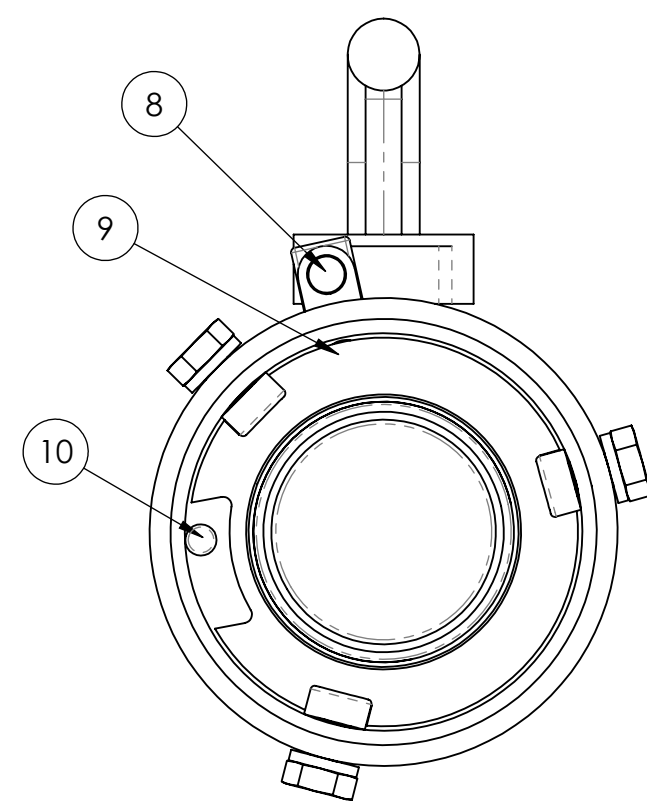
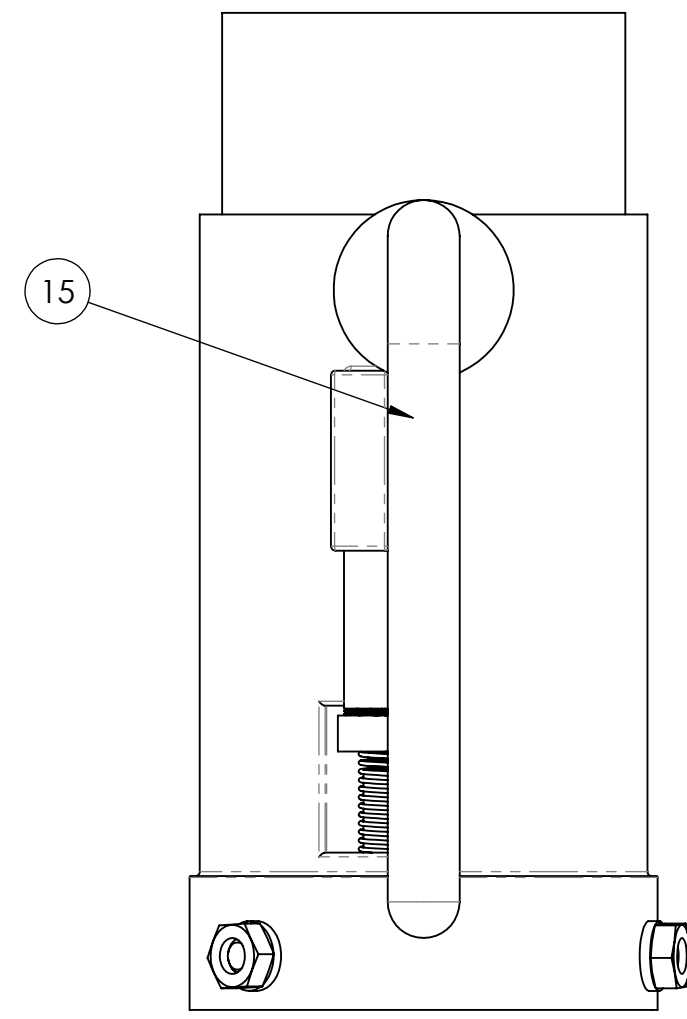
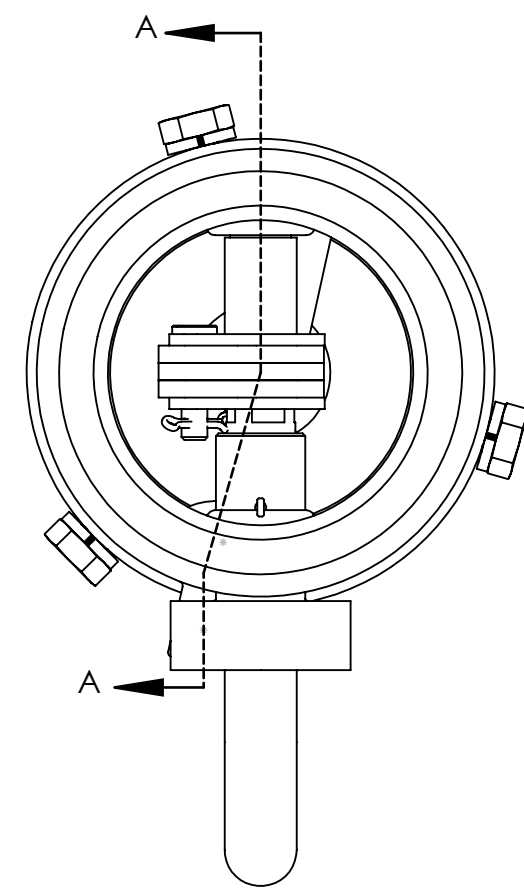
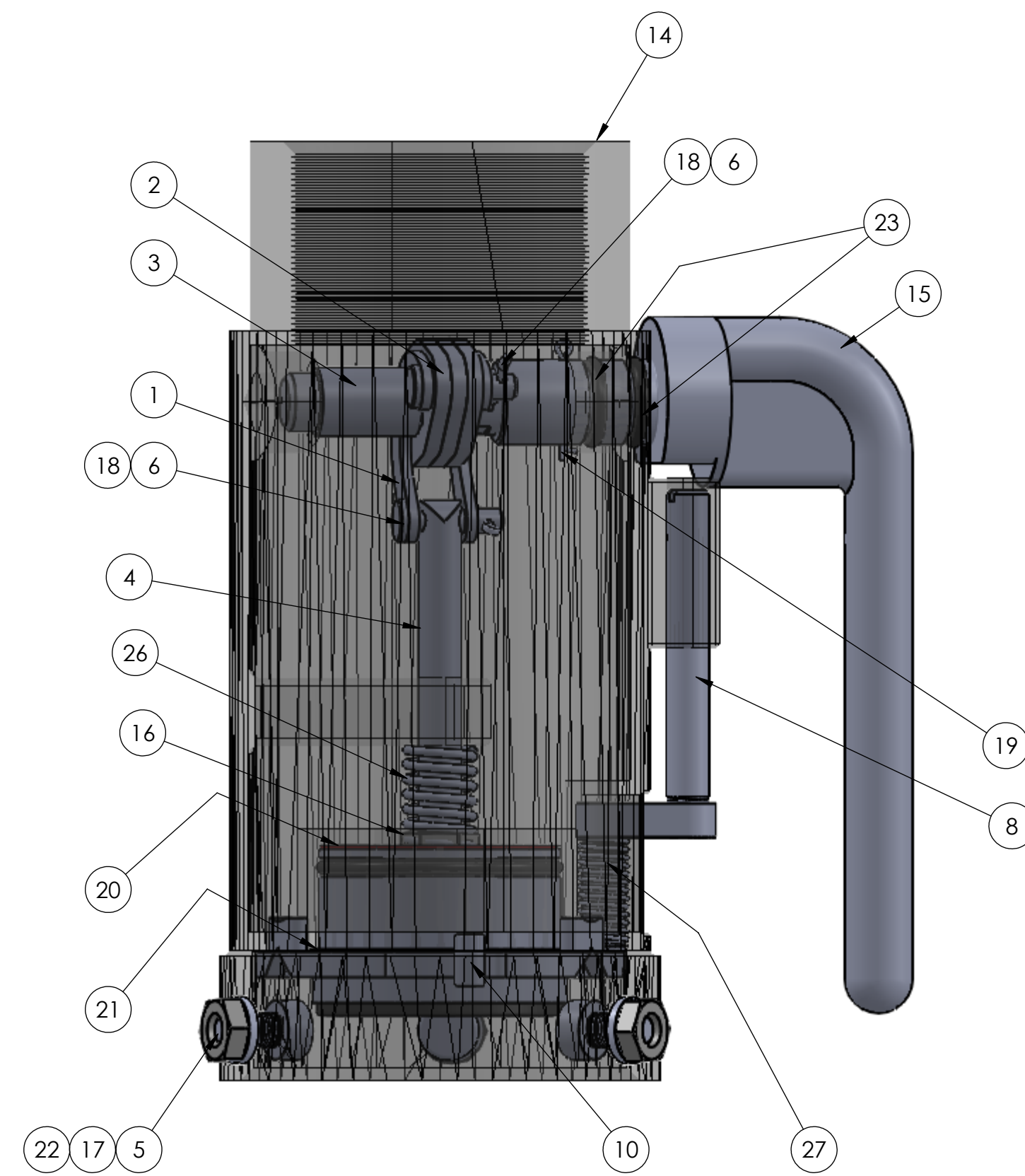


NOTES (UNLESS OTHERWISE SPECIFIED)

1. ITEM #10 (PIN) PN-81918 IS PRESS FIT INTO ITEM #14 (BODY) PN-52702
2. APPLY PERMATAX ANT-SIEZE LUBRICANT 80078 OR LOCTITE442-8029 TO THREADED PARTS, UNLESS NOTED.



SECTION A-A
SCALE 1 : 1



ITEM NO.	PART NUMBER	DESCRIPTION	QTY.
1	15725	PIVOT ARM	2
2	15735	CAM PLATE	3
3	15756	SPACER - SHAFT	1
4	41901	ADJUSTMENT PIN	1
5	41902	STUD-BODY	3
6	41903	PIVOT PIN	2
7	41904	BRIDGE PLATE	1
8	41905	PUSH PIN-ARM	1
9	41906	PIN-LOCKING PLATE	1
10	41918	PIN	1
11	51714	CENTER GUIDE	1
12	51909	SLEEVE-COUPLER	1
13	51915	LOCKING PLATE	1
14	52700	BODY-COUPLER MACHINED	1
15	53906	ARM - MACHINED	1
16	80553	NUT HX-HEAD SS	1
17	85500	NUT HX-HEAD SS	3
18	80589	COTTER PIN	2
19	80591	COTTER PIN	1
20	80772	WAVE SPRING	1
21	80773	WAVE SPRING	1
22	81195	SPLIT L'K WASHER SS	3
23	81599	O-RING NITRO	2
24	81637	O-RING VITON	1
25	81678	SEAL	1
26	86079	SPRING	1
27	86169	SPRING	1

**ENGINEERING APPROVED COPY
FOR MANUFACTURE**

REV.	EO#	DESCRIPTION	DATE	BY	PK
B	5477	REDRAWN IN SOLIDWORKS, ITEM #24 PN-81367 WAS 81641, REVISED NOTE #2	5/14/2014		PK
REVISIONS					

NO. REQD.	NEXT ASSEMBLY	NAME	DATE	UNLESS OTHERWISE SPECIFIED: DIMENSIONS ARE IN INCHES
		MARSELOS	5-04-99	TOLERANCES: FRACTIONS +1/16 XX ±.03 XXX ±0.01 ANGLE ± 1/2°
CHECKED	RR	6-25-14		HOLE DIA: .0155 - .125 DIA. +.004 -.001 .1260 - .250 DIA. +.005 -.001 .2510 - .500 DIA. +.006 -.001 .5010 - .750 DIA. +.008 -.001 .7510 - 1.000 DIA. +.010 -.001
MATERIAL	SEE BOM			REMOVE ALL BURRS AND SHARP EDGES INTERPRET DRAWING PER ANSI Y14.5M-1982 SURFACE ROUGHNESS PER MIL-STD-10 ALL MACHINED SURFACES NOT TO EXCEED .63 MICRONS PER MIL-STD-10 UNLESS NOTED
FINAL ASSEMBLY				THIRD ANGLE PROJECTION
FINISH		SolidWorks		

TRANSLAND

**COUPLER ASSEMBLY
2" SS. DRY BREAK**

SIZE: **D** DWG. NO. **50022** REV **B**

SCALE: 3:4 WEIGHT: SHEET 1 OF 1

50022-rev-B