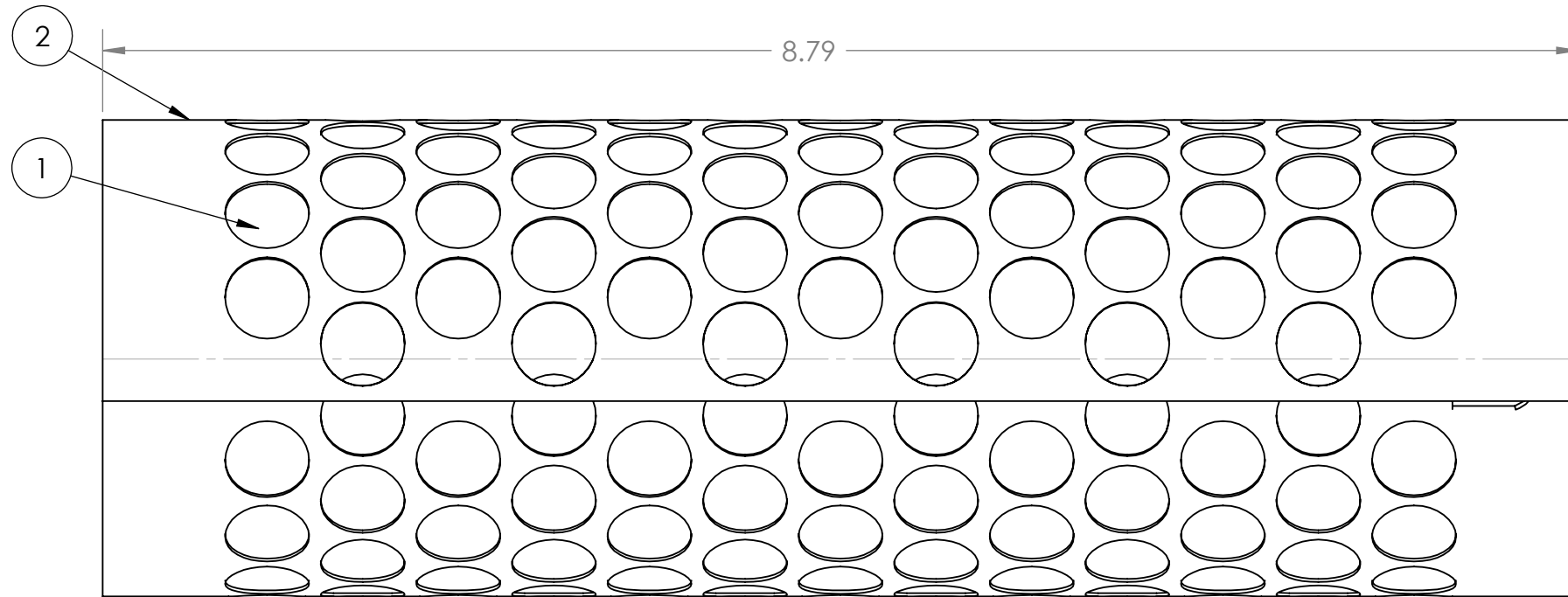


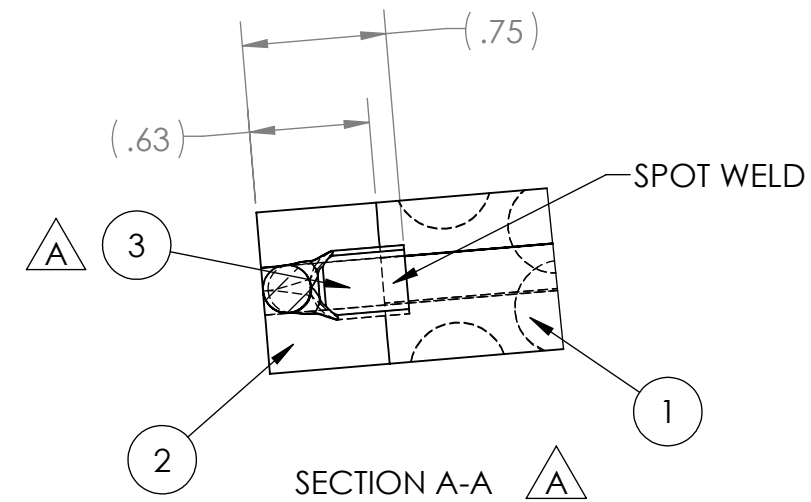
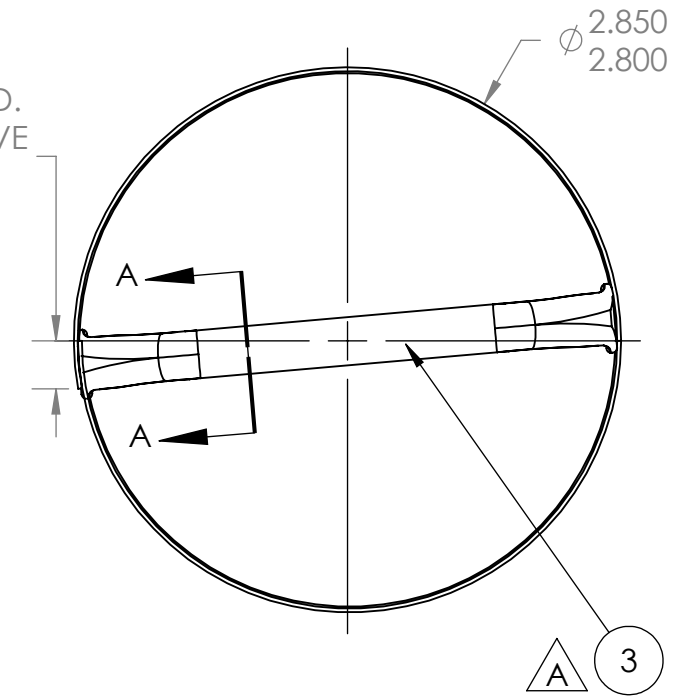
NOTES:

1. PART IS INTERCHANGEABLE WITH P/Ns 29539 & 29541.
2. SPOT WELD ITEMS 1 AND 2 TOGETHER IN FLAT PATTERN.
3. FORM TO DIMENSIONS REQUIRED AND SPOT WELD AS REQUIRED.

ITEM NO.	PART NUMBER	DESCRIPTION	QTY.
1	14000	SCREEN - 30 MESH	1
2	14837	SCREEN	1
3	19530	SCREEN HANDLE	1



SPOT WELD AS REQD.
OVERLAP TO ACHIEVE
REQD. DIA.
(.25 REF)



**ENGINEERING APPROVED COPY
FOR MANUFACTURE**

REV.	E.O.#	DESCRIPTION	DATE	BY
A	3758	ADDED ITEM 3 P/N 19530 QTY 1 & SECTION "A-A"	12/20/2012	PK
REVISIONS				

NEXT ASSEMBLY		NAME	DATE	UNLESS OTHERWISE SPECIFIED: DIMENSIONS ARE IN INCHES TOLERANCES: .XX ±.03 .XXX ±.010 ANGLE ± 1/2° REMOVE ALL BURRS AND SHARP EDGES INTERPRET DRAWING PER ANSI Y14.5M-1982 ALL MACHINED SURFACES NOT TO EXCEED 63 MICROINCHES PER MIL-STD-10 UNLESS NOTED	
DRAWN		JMV	7/13/11		
CHECKED		RR	1/02/13		
ENG APPR.					TITLE: SCREEN ASSY - SST LINE STRAINER 30 MESH
FINAL ASSEMBLY		MATERIAL			SIZE B DWG. NO. 29540
59136		SEE BOM			REV A
FINISH					SCALE: 1:1 WEIGHT: ?? SHEET 1 OF 1
				 THIRD ANGLE PROJECTION SolidWorks	