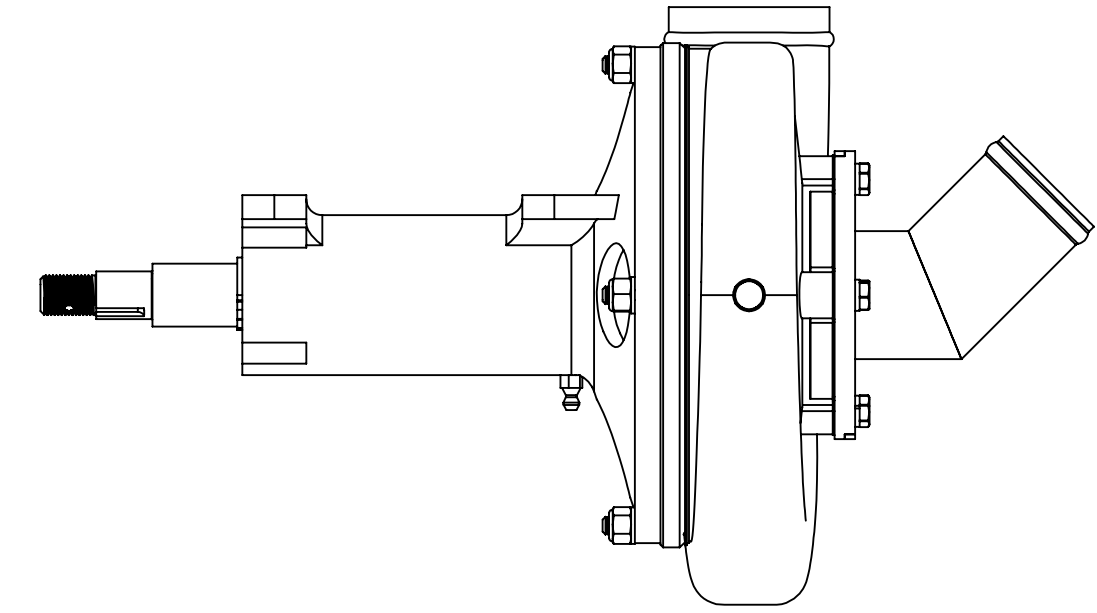
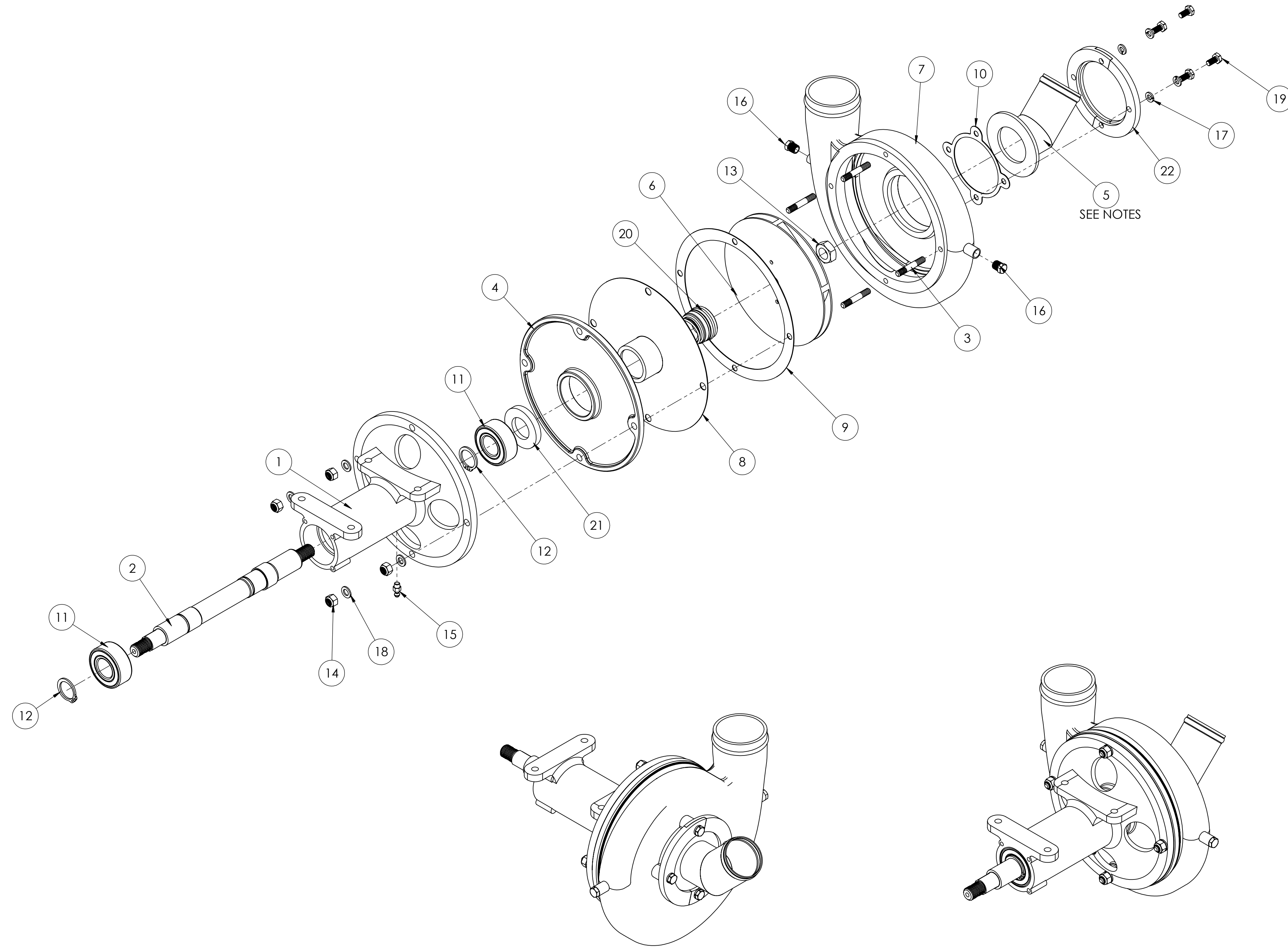


**NOTES (UNLESS OTHERWISE SPECIFIED)**

- ITEM 5 CAN BE REPLACED WITH PARTS IN OPTION TABLES CUSTOMER REQUEST.

OPTION TABLE FOR ITEM 5	
PART NO.	DESCRIPTION
24063	2 1/4" STRAIGHT HOSE
24064	2" STRAIGHT HOSE
24065	2 1/2" STRAIGHT HOSE
24066	3" STRAIGHT HOSE
24067	2" HOSE 60°
24068	2 1/4" HOSE 60°
24069	2 1/2" HOSE 60°
24070	3" HOSE 60°
24060	2 1/2" HOSE 30°
24061	2 1/4" HOSE 30°
24062	2" HOSE 45°
24073	2" HOSE 30°
24074	3" HOSE 30°



DWG NO: **51985** REV: **C**

ITEM NO.	PART NO.	NO. REQD	DESCRIPTION	SIZE	SPEC.	NO. REQD	NEXT ASSEMBLY	FINAL ASSEMBLY
22	34071	2	MOUNTING PLATE					
21	86176	1	GREASE SEAL					
20	85687	1	SHAFT SEAL					
19	80102	4	BOLT HX HEAD AN4C-4A					
18	81233	4	FLAT WASHER AN960C516					
17	81195	4	LOCK WASHER 1/4					
16	81175	2	PLUG					
15	80603	1	GREASE FITTING 1/4-28 UNF					
14	80563	4	NUT NYLOCK AN363C524					
13	80524	1	CHECK NUT					
12	74568	2	SNAP RING					
11	71548	2	BEARING 6.5" PUMP					
10	60842	1	GASKET					
9	60662	1	GASKET (21363 PUMP)					
8	51926	1	WELD ASSY - SEAL CUP 6.5" PUMP					
7	51783	1	VOLUTE HOUSING MACH. SST. 6.5" PUMP					
6	50782	1	IMPELLER SST 6.5" SPRAY PUMP					
5	24062	1	HOSE TUBE WELDMENT 2" AT 45°				SEE NOTES	
4	44362	1	BACK PLATE 6.5" PUMP					
3	40804	4	SUD - SPRAY PUMP					
2	40797	1	SHAFT 6.5" GRUMMAN					
1	40785	1	BEARING HOUSING - SPRAY PUMP					

REV.	E.O.	DESCRIPTION	BY	DATE	APPR'D	DATE
C	10809	CHANGED ITEM 8 51921 TO 51926	LA	7/12/2017	CK	7/17/17
B	9406	CHANGED ITEM 20 85689 TO 85687	RC	10/20/16	CLK	10/25/16
A	1816	ADDED P/N 24060, 24061, 24062, 24073 & 24074 TO OPTION TABLE	PK	9/7/11	JMV	9/8/11
NC	0336	DRAWN IN SOLIDWORKS	PK	7/22/11	JMV	7/23/11

**REVISIONS**

**ENGINEERING APPROVED COPY FOR MANUFACTURE**

NAME	DATE	UNLESS OTHERWISE SPECIFIED: DIMENSIONS ARE IN INCHES
DRAWN	PK 7/20/11	TOLERANCES:
CHECKED	RR 7/17/17	FRACTIONS ±1/16
ENG APPR.	CLK 7/17/17	XX ±.03
		XXX ±.010
		ANGLE ± 1/2°
		HOLE DIA:
		.2513 - .125 DIA. +.004 -.001
		.1249 - .250 DIA. +.005 -.001
		.2510 - .500 DIA. +.006 -.001
		.5010 - .750 DIA. +.008 -.001
		.7510 - 1.000 DIA. +.010 -.001
		REMOVE ALL BURRS AND SHARP EDGES
		INTERPRET DRAWING PER ANSI Y14.5M-1992
		SURFACE ROUGHNESS PER MIL-STD-10
		ALL MACHINED SURFACES NOT TO EXCEED 63 MICRONS PER MIL-STD-10 UNLESS NOTED
SolidWorks		THIRD ANGLE PROJECTION

**TRANSLAND**

1206 HATTON ROAD, WICHITA FALLS, TX 76702

TITLE: **SPRAY PUMP 6 1/2" SS W/O BRAKE**

SIZE: **D** DWG. NO. **51985** REV: **C**

SCALE: NTS MODEL: SHEET 1 OF 1