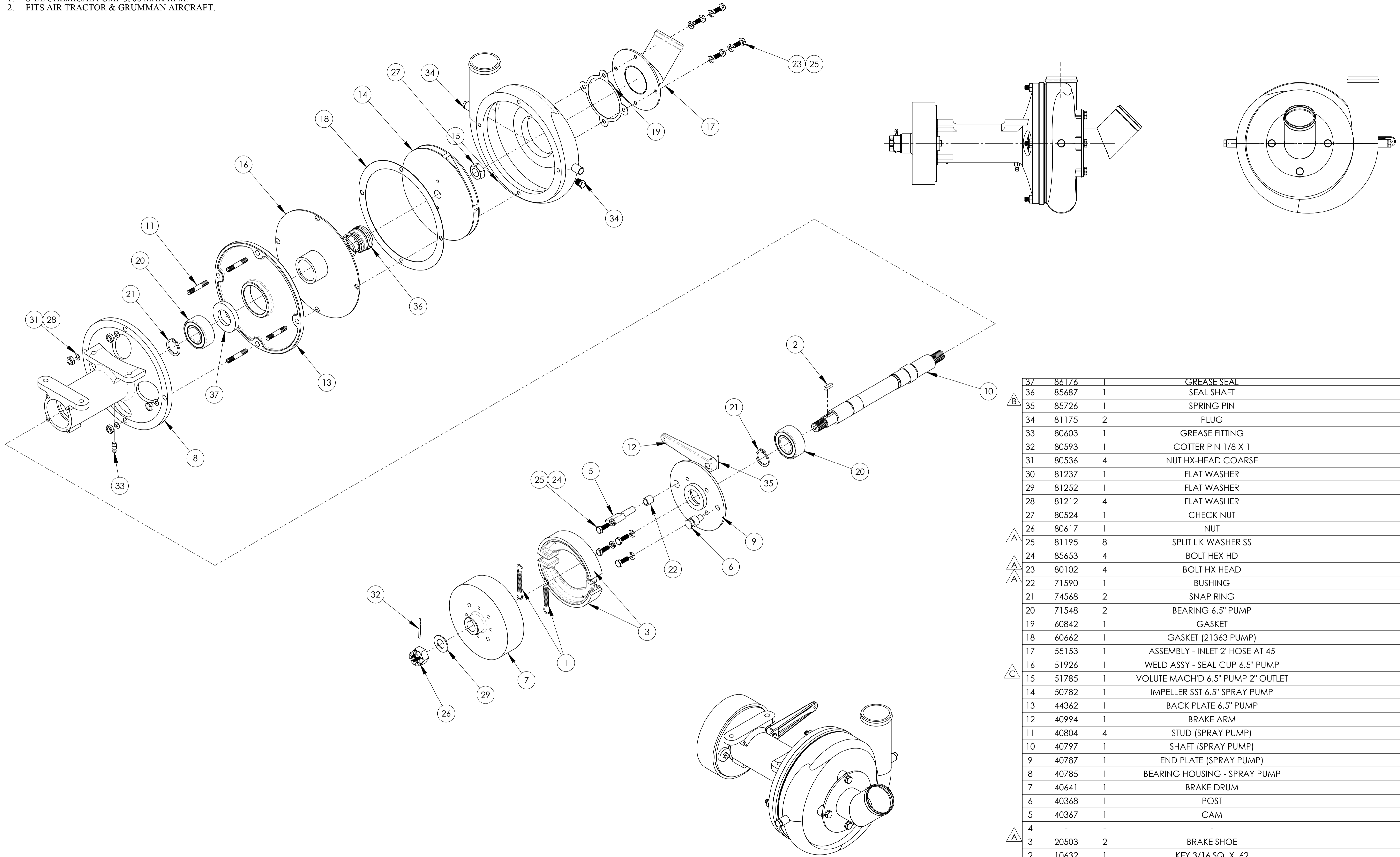


NOTES (UNLESS OTHERWISE SPECIFIED)
 1. 6-1/2 CHEMICAL PUMP 3500 MAX RPM.
 2. FITS AIR TRACTOR & GRUMMAN AIRCRAFT.



ITEM NO.	PART NO.	NO. REQD.	DESCRIPTION	SIZE	SPEC.	NO. REQD.	NEXT ASSEMBLY	FINAL ASSEMBLY
			MATERIAL					
37	86176	1	GREASE SEAL					
36	85687	1	SEAL SHAFT					
35	85726	1	SPRING PIN					
34	81175	2	PLUG					
33	80603	1	GREASE FITTING					
32	80593	1	COTTER PIN 1/8 X 1					
31	80536	4	NUT HX-HEAD COARSE					
30	81237	1	FLAT WASHER					
29	81252	1	FLAT WASHER					
28	81212	4	FLAT WASHER					
27	80524	1	CHECK NUT					
26	80617	1	NUT					
25	81195	8	SPLIT L'K WASHER SS					
24	85653	4	BOLT HEX HD					
23	80102	4	BOLT HX HEAD					
22	71590	1	BUSHING					
21	74568	2	SNAP RING					
20	71548	2	BEARING 6.5" PUMP					
19	60842	1	GASKET					
18	60662	1	GASKET (21363 PUMP)					
17	55153	1	ASSEMBLY - INLET 2" HOSE AT 45					
16	51926	1	WELD ASSY - SEAL CUP 6.5" PUMP					
15	51785	1	VOLUTE MACH'D 6.5" PUMP 2" OUTLET					
14	50782	1	IMPELLER SST 6.5" SPRAY PUMP					
13	44362	1	BACK PLATE 6.5" PUMP					
12	40994	1	BRAKE ARM					
11	40804	4	STUD (SPRAY PUMP)					
10	40797	1	SHAFT (SPRAY PUMP)					
9	40787	1	END PLATE (SPRAY PUMP)					
8	40785	1	BEARING HOUSING - SPRAY PUMP					
7	40641	1	BRAKE DRUM					
6	40368	1	POST					
5	40367	1	CAM					
4	-	-	-					
3	20503	2	BRAKE SHOE					
2	10632	1	KEY 3/16 SQ. X .62					
1	10596	2	SPRING					

REV.	EO#	DESCRIPTION	BY	DATE	APPR'D	DATE
C	10805	CHANGED ITEM 16 51921 TO 51926	LA	7/12/17	CK	7/17/17
B	9398	CHANGED ITEM 36 85689 TO 85687	RC	10/20/2016	CLK	10/24/2016
A	7478	DELETE ITEM #4 ; CHANGE ITEM #22 - 71590 TO 71590 , ITEM #23 - 80104 TO 80102, ITEM #24 - 85667 TO 85653, ITEM #26 - 80507 TO 80617	RC	10/24/2015	JMV	10/25/2015
NC	5594	INITIAL RELEASE	PK	7/9/2014	JMV	7/10/2014

REVISIONS

**ENGINEERING APPROVED COPY
FOR MANUFACTURE**

NAME	DATE	UNLESS OTHERWISE SPECIFIED: DIMENSIONS ARE IN INCHES TOLERANCES: FRACTIONS ±1/16 XX ±.03 XXX ±.010 ANGLE ±1/2°	<p>1206 HATTON ROAD, WICHITA FALLS, TX 76302</p> <p>2" SST SPRAY PUMP 6-1/2" PUMP</p>
DRAWN	PK 7/9/14		
CHECKED	RR 7/17/17		
ENG APPR.	CLK 7/17/17		
HOLE DIA: .0135 - .125 DIA. +.004 -.001 .1260 - .250 DIA. +.005 -.001 .2510 - .500 DIA. +.006 -.001 .5010 - .750 DIA. +.008 -.001 .7510 - 1.000 DIA. +.010 -.001			TITLE: 51859
REMOVE ALL BURS AND SHARP EDGES INTERPRET DRAWING PER ANSI Y14.5M-1982 SURFACE ROUGHNESS PER MIL-STD-10 ALL MACHINED SURFACES NOT TO EXCEED 63 MICRONS PER MIL-STD-10 UNLESS NOTED			SIZE DWG. NO. D
SolidWorks			SCALE: NTS MODEL: SHEET 1 OF 1