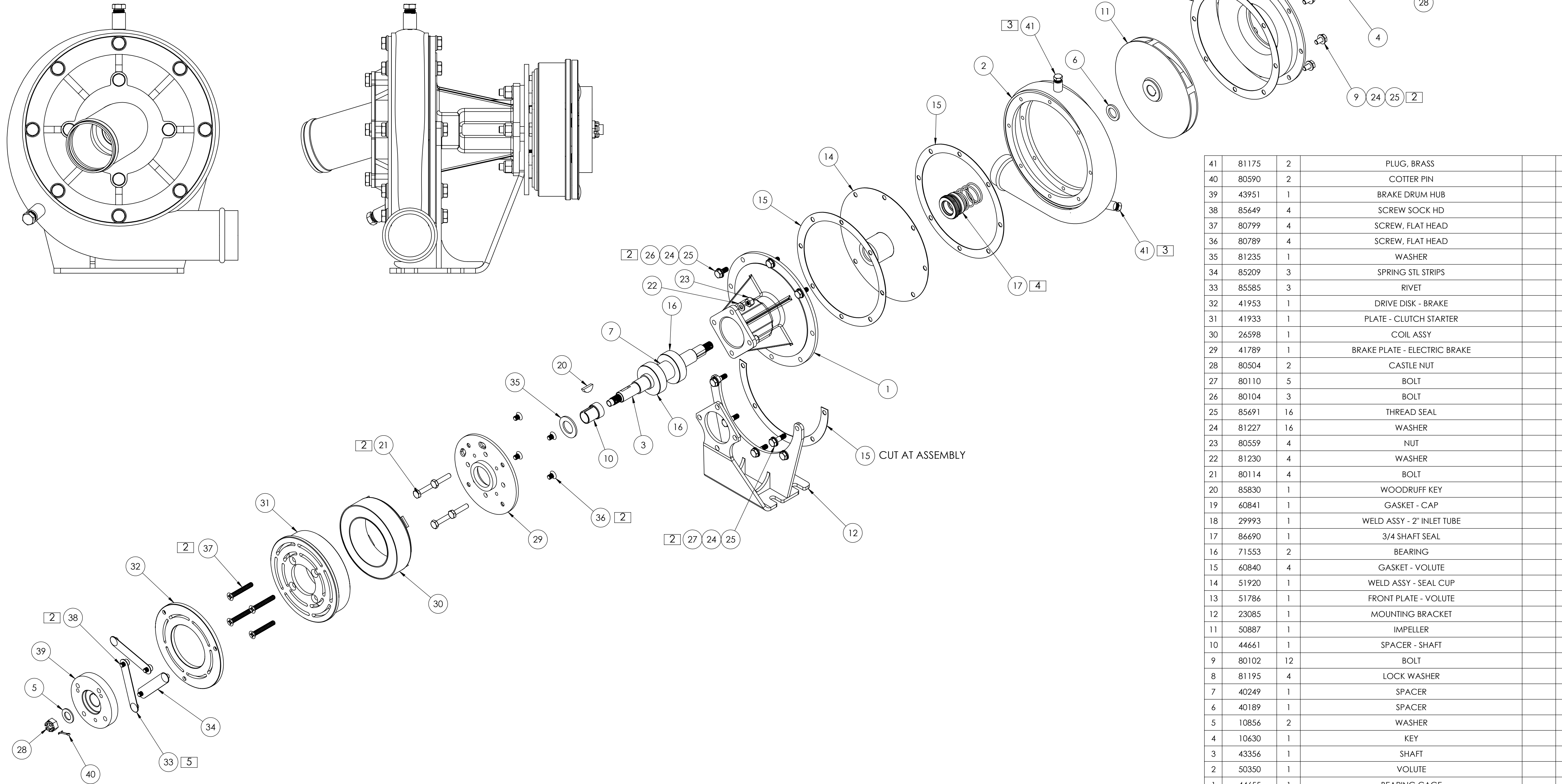


NOTES (UNLESS OTHERWISE SPECIFIED)

1. HARDWARE MAY BE SUBSTITUTED FOR LENGTH PER AC43.13-1B, CHAPTER 7, SECTION 3, PARAGRAPH 37 & SECTION 4, PARAGRAPH 64.
2. ANTI-SEIZE: APPLY PERMATEX 80078 OR LOCTITE 442-8029; APPLY PER MANUFACTURER'S INSTRUCTIONS.
3. NPT FITTING: APPLY SWAGelok PTFE FREE THREAD SEALANT OR ARGCO SUPERDOPE ANEROBIC THREAD SEALANT; APPLY PER MANUFACTURER'S INSTRUCTIONS.
4. LUBRICATION: LUBRICATE USING VALVOLINE SYNPOWER SYNTHETIC GREASE, NLGI #2 GC-LB.
5. SOLID RIVETS: INSTALL PER AC43.13-1B, CHAPTER 4, SECTION 4, PARAGRAPH 57.



ITEM NO.	PART NO.	NO. REQD	DESCRIPTION	SIZE	SPEC.	NO. REQD	NEXT ASSEMBLY	FINAL ASSEMBLY
41	81175	2	PLUG, BRASS					
40	80590	2	COTTER PIN					
39	43951	1	BRAKE DRUM HUB					
38	85649	4	SCREW SOCK HD					
37	80799	4	SCREW, FLAT HEAD					
36	80789	4	SCREW, FLAT HEAD					
35	81235	1	WASHER					
34	85209	3	SPRING STL STRIPS					
33	85585	3	RIVET					
32	41953	1	DRIVE DISK - BRAKE					
31	41933	1	PLATE - CLUTCH STARTER					
30	26598	1	COIL ASSY					
29	41789	1	BRAKE PLATE - ELECTRIC BRAKE					
28	80504	2	CASTLE NUT					
27	80110	5	BOLT					
26	80104	3	BOLT					
25	85691	16	THREAD SEAL					
24	81227	16	WASHER					
23	80559	4	NUT					
22	81230	4	WASHER					
21	80114	4	BOLT					
20	85830	1	WOODRUFF KEY					
19	60841	1	GASKET - CAP					
18	29993	1	WELD ASSY - 2" INLET TUBE					
17	86690	1	3/4 SHAFT SEAL					
16	71553	2	BEARING					
15	60840	4	GASKET - VOLUTE					
14	51920	1	WELD ASSY - SEAL CUP					
13	51786	1	FRONT PLATE - VOLUTE					
12	23085	1	MOUNTING BRACKET					
11	50887	1	IMPELLER					
10	44661	1	SPACER - SHAFT					
9	80102	12	BOLT					
8	81195	4	LOCK WASHER					
7	40249	1	SPACER					
6	40189	1	SPACER					
5	10856	2	WASHER					
4	10630	1	KEY					
3	43356	1	SHAFT					
2	50350	1	VOLUTE					
1	44655	1	BEARING CAGE					

NC	11155	INITIAL RELEASE	RC	11/2/2017	CLK	11/6/2017
REV	E.O.	DESCRIPTION	BY	DATE	APPR'D	DATE
REVISIONS						

**ENGINEERING APPROVED COPY
FOR MANUFACTURE**

DRAWN: RC 11/2/17 CHECKED: RR 11/6/17 ENG APPR: CLK 11/6/17 <small>REMOVE ALL BURRS AND SHARP EDGES INTERPRET DRAWING PER ANSI Y14.5M-1982 SURFACE ROUGHNESS PER MIL-STD-10 ALL MACHINED SURFACES NOT TO EXCEED 32 MICROINCHES PER MIL-STD-10 UNLESS NOTED</small>	UNLESS OTHERWISE SPECIFIED: DIMENSIONS ARE IN INCHES TOLERANCES: FRACTIONS ±1/16 XX ±.03 XXX ±.010 ANGLE ±1/2° HOLE DIA: .2515 - .125 DIA. +.004 -.001 .1249 - .250 DIA. +.005 -.001 .2510 - .500 DIA. +.006 -.001 .5010 - .750 DIA. +.008 -.001 .7510 - 1.000 DIA. +.010 -.001	 1206 HATTON ROAD, WICHITA FALLS, TX 76302 TITLE: SST PUMP 6" W/ELEC BRK SIZE: D DWG. NO. 51067 REV NC SCALE: NTS MODEL: SHEET 1 OF 1
--	---	---