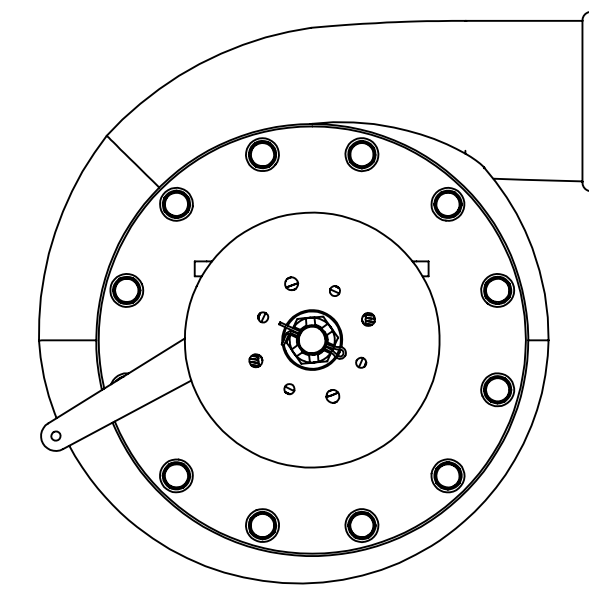
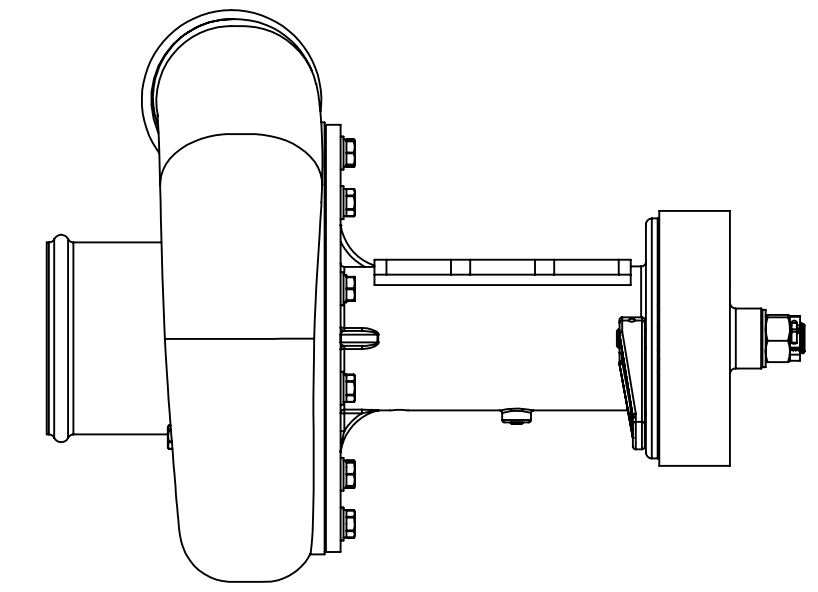
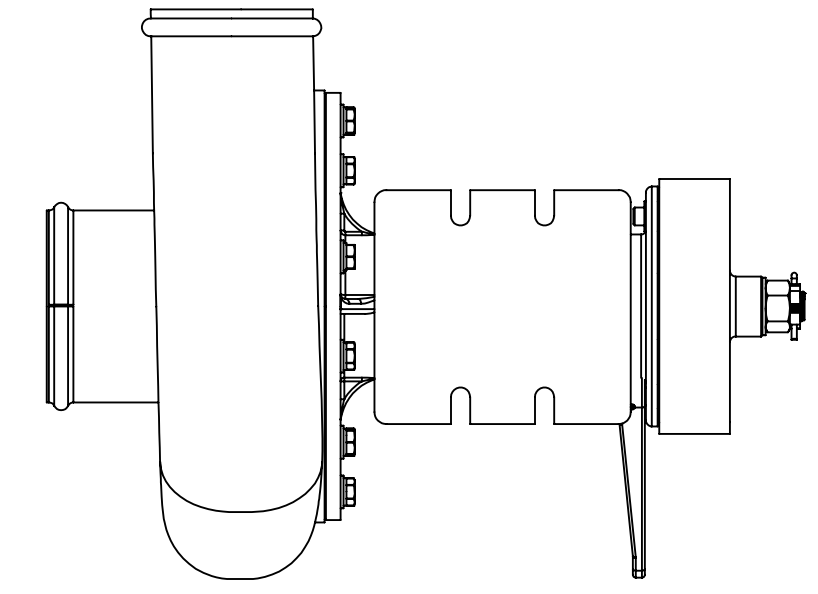
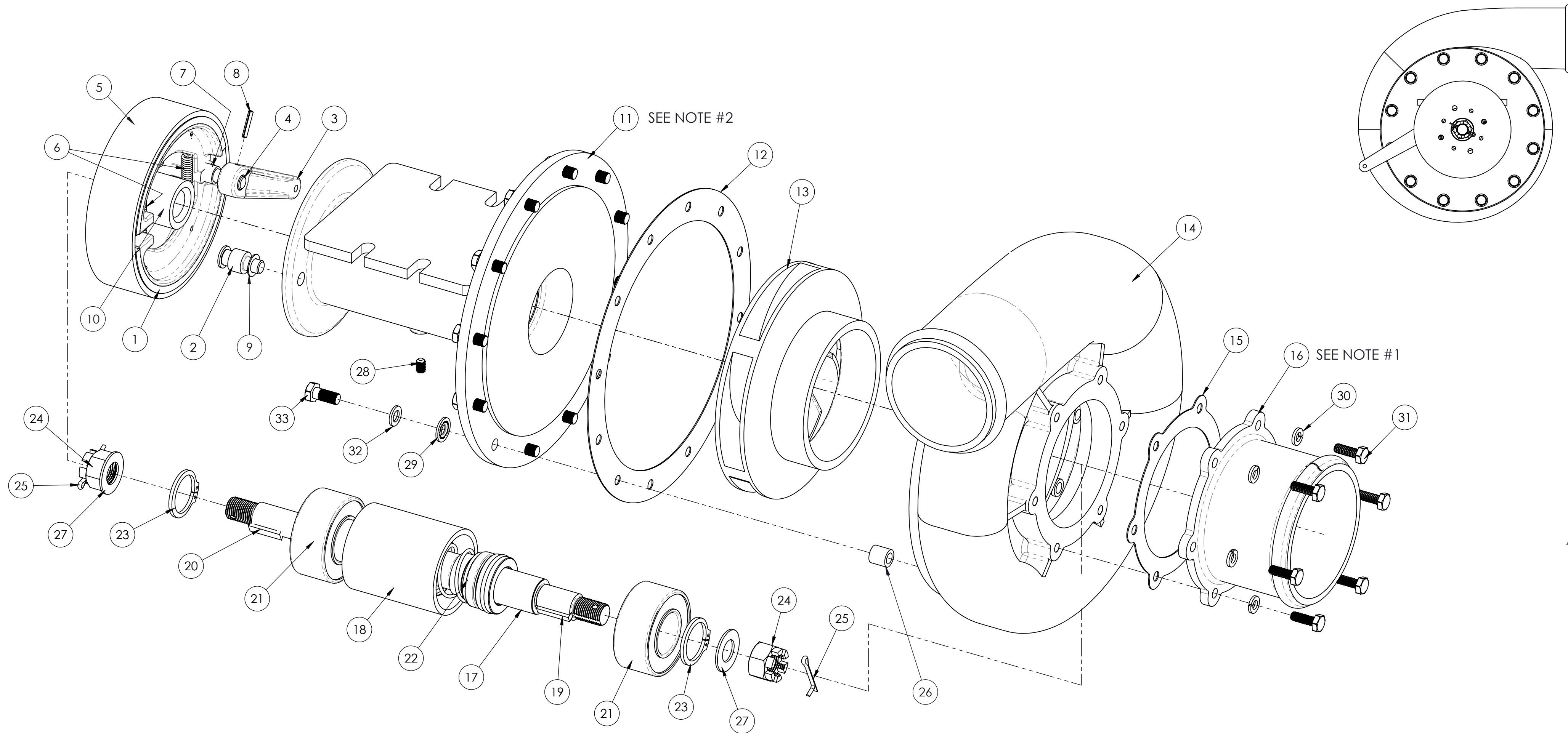


NOTES (UNLESS OTHERWISE SPECIFIED)

- 1. PN-40987 (INLET 4" STRAIGHT) OR USE HOSE CONN-ASSY - 45° - PN-22313
- 2. FOR PN-40422 BEARING CASE, OPEN 12 HOLES ON FLANGE TO ϕ .332 ("Q" DRILL)



B	33	80222	12	BOLT HX HEAD AN5C-5A						
B	32	81233	12	FLAT WASHER AN960C516						
B	31	85667	6	BOLT HX HEAD MS35307-306						
	30	81195	6	SPLIT L'K WASHER AN935C-416						
B	29	85694	12	STAT-O-SEAL						
	28	85632	1	SET SCREW						
	27	81252	2	WASHER						
B	26	81336	12	INSERT INT.5/16-24, EXT. 1/2-13						
	25	80593	2	COTTER PIN 1/8 x 1						
	24	80507	2	NUT						
	23	74570	2	RETAINING RING SHR-118ST-PA						
C	22	85687	1	SHAFT SEAL						
	21	71570	2	BEARING 7" SPRAY PUMPS						
	20	85830	1	KEY - WOODRUFF						
B	19	10636	1	KEY						
B	18	40424	1	SPACER						
	17	40423	1	SHAFT 7" PUMP						
	16	40987	1	INLET 4" STRAIGHT						
	15	60789	1	GASKET						
	14	40981	1	VOLUTE HOUSING - 7" IMPELLER						
	13	40988	1	IMPELLER						
	12	60021	1	GASKET						
	11	40422	1	BEARING CASE						
	10	40425	1	SPACER						
	9	81236	1	FLAT WASHER AN960-C616L						
	8	85724	1	SPRING PIN						
	7	71590	1	BUSHING						
	6	10596	2	SPRING						
	5	40641	1	BRAKE DRUM						
	4	40416	1	CAM						
	3	40994	1	BRAKE ARM						
	2	40368	1	POST						
	1	20503	2	BRAKE SHOE ASSY						
ITEM NO.	PART NO.	NO. REQD	DESCRIPTION	SIZE	SPEC.	NO. REQD	NEXT ASSEMBLY	FINAL ASSEMBLY		
				MATERIAL						

REV.	E.O.	DESCRIPTION	BY	DATE	APPR'D	DATE
C	9396	CHANGED ITEM 22 85689 TO 85687	RC	10/20/2016	CLK	10/24/2016
B	4338	REDRAWN IN SOLIDWORKS, UPDATED B.O.M. ADDED NOTE #2	PK	6/11/2013	JMV	6/12/2013
REVISIONS						

**ENGINEERING APPROVED COPY
FOR MANUFACTURE**

DRAWN: PK 4/18/13 CHECKED: RR 10/24/16 ENG APPR: CLK 10/24/16	UNLESS OTHERWISE SPECIFIED: DIMENSIONS ARE IN INCHES TOLERANCES: FRACTIONS ±1/16 DECIMALS ±.03 HOLE DIA. ±.010 ANGLE ±1/2°	 1206 HATTON ROAD, WICHITA FALLS, TX 76302 SPRAY PUMP 7" ASSEMBLY TITLE:
REMOVE ALL BURRS AND SHARP EDGES INTERPRET DRAWING PER ANSI Y14.5M-1982 SURFACE ROUGHNESS PER MIL-STD-10 ALL MACHINED SURFACES NOT TO EXCEED AS MICROFINISHES PER MIL-STD-10 UNLESS NOTED	HOLE DIA. .2135 - .125 DIA. +.004 -.001 .1260 - .230 DIA. +.005 -.001 .2510 - .500 DIA. +.006 -.001 .5010 - .750 DIA. +.008 -.001 .7510 - 1.000 DIA. +.010 -.001	SIZE DWG. NO. 25007 SCALE: NTS MODEL: SHEET 1 OF 1