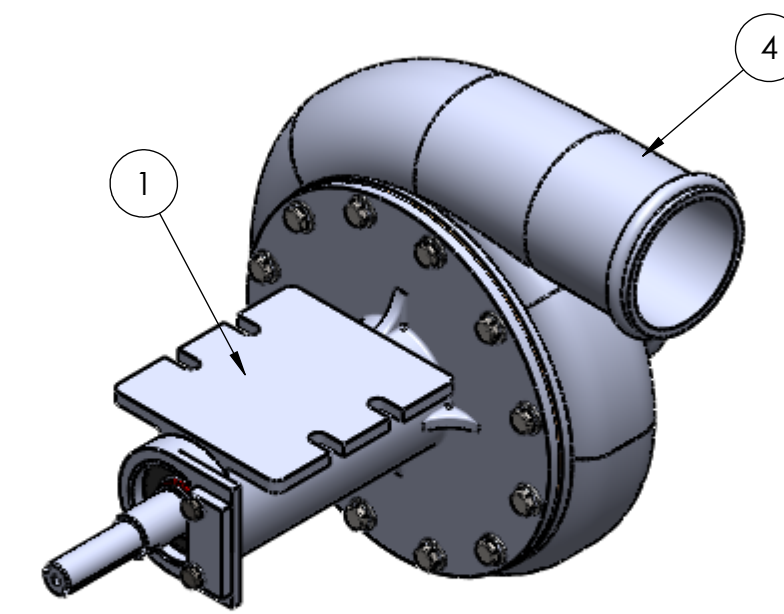
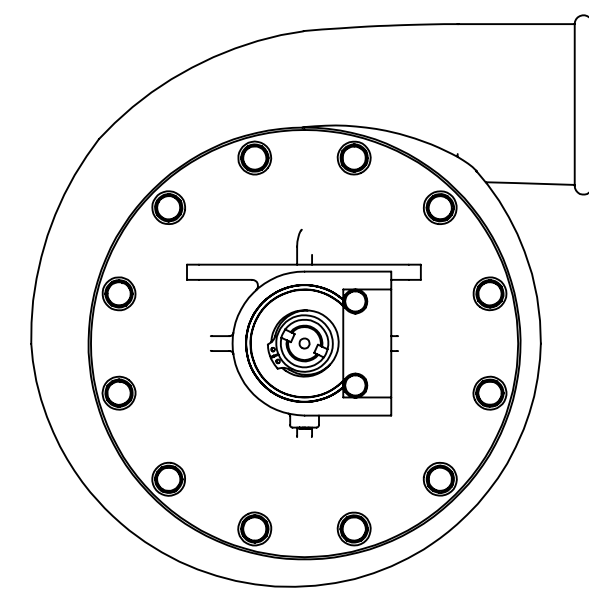
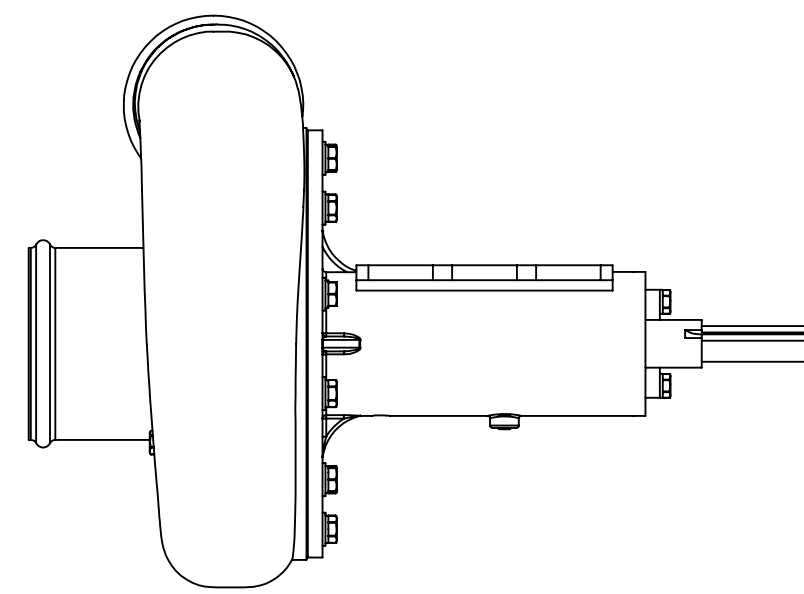
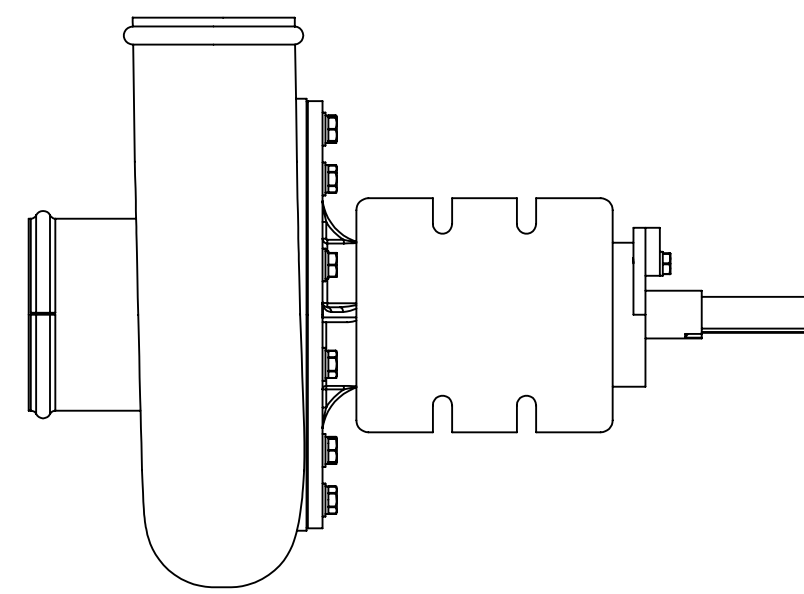
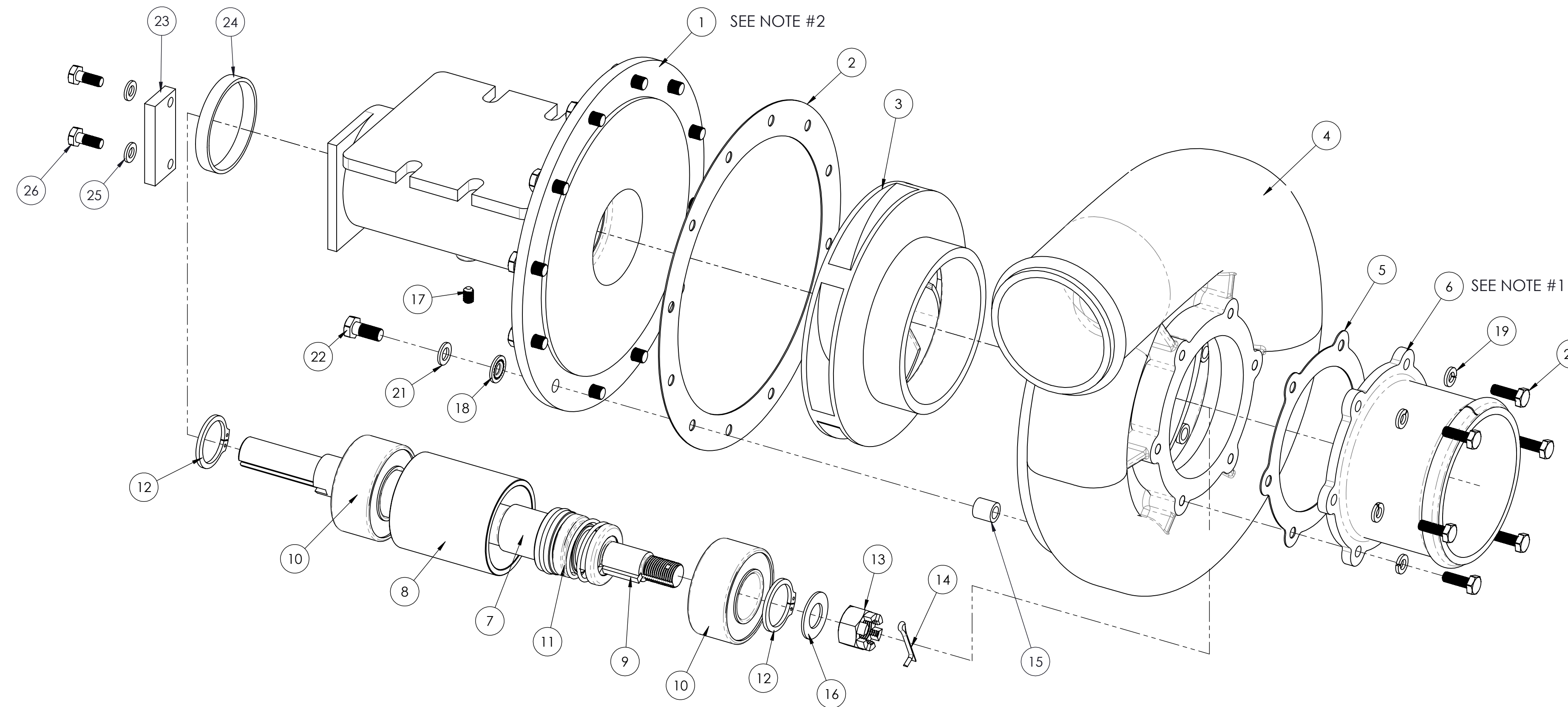


NOTES (UNLESS OTHERWISE SPECIFIED)

1. PN-40987 (INLET 4" STRAIGHT) OR USE HOSE CONN-ASSY - 45° - PN-22313
2. FOR PN-40422 BEARING CASE, OPEN 12 HOLES ON FLANGE TO ϕ .332 ("Q" DRILL)



ITEM NO.	PART NUMBER	DESCRIPTION	QTY.
1	40934	BEARING CASE	1
2	60021	GASKET	1
3	40988	IMPELLER	1
4	40981	VOLUTE HOUSING - 7" IMPELLAR	1
5	60789	GASKET	1
6	40987	INLET 4" STRAIGHT	1
7	40984	SHAFT 6.5" GRUMMAN	1
8	40986	SPACER, BEARING	1
9	10636	KEY	1
10	71570	BEARING 7" SPRAY PUMPS	2
11	85689	SHAFT SEAL	1
12	74570	RETAINING RING SHR-118ST-PA	2
13	80507	NUT	1
14	80593	COTTER PIN 1/8 x 1	1
15	81336	INSERT INT.5/16-24, EXT. 1/2-13	12
16	81252	WASHER	1
17	85632	SET SCREW 1/4-20 x 3/8"	1
18	85694	STAT-O-SEAL 5/16 - 750-0000-5/16	12
19	81195	SPLIT L'K WASHER SST 1/4 - AN935C-416	6
20	85667	BOLT HX HEAD SS 1/4-20 x 3/4 LG	6
21	81233	FLAT WASHER 5/16 SST AN960C516	12
22	80222	BOLT HX HEAD 5/16-24 x .72 LG AN5C-5A	12
23	40985	SPACER	1
24	41937	SPACER-7" PUMP	1
25	81230	FLAT WASHER 1/4 SST AN960C416	2
26	80104	BOLT HX HEAD 1/4-28 AN4C-5A	2

**ENGINEERING APPROVED COPY
FOR MANUFACTURE**

REV.	E.O. #	DESCRIPTION	DATE	BY
A	4340	DRAWN IN SOLIDWORKS.	6/11/2013	PK
REVISIONS				

NO. REQD.	NEXT ASSEMBLY	NAME	DATE	UNLESS OTHERWISE SPECIFIED: DIMENSIONS ARE IN INCHES
		PK	6-12-13	TOLERANCES: FRACTIONS: +1/16 XX ±.03 XXX ±0.01 ANGLE ± 1/2°
MATERIAL	SEE BOM	CHECKED	RR	6-13-13
FINAL ASSEMBLY		ENG APPR.		HOLE DIA: .0155 - .125 DIA. +.004 -.001 .1260 - .250 DIA. +.005 -.001 .2510 - .500 DIA. +.006 -.001 .5010 - .750 DIA. +.008 -.001 .7510 - 1.000 DIA. +.010 -.001
FINISH		SolidWorks		REMOVE ALL BURRS AND SHARP EDGES INTERPRET DRAWING PER ANSI Y14.5M-1982 SURFACE ROUGHNESS PER MIL-STD-10 ALL MACHINED SURFACES NOT TO EXCEED .63 MICRONS PER MIL-STD-10 UNLESS NOTED

TRANSLAND

**SPRAY PUMP 7"
4" INLET - 3" OUTLET**

TITLE: **25003**

SCALE: 1:4 DWG. NO. **25003** WEIGHT: REV **A**

SHEET 1 OF 1