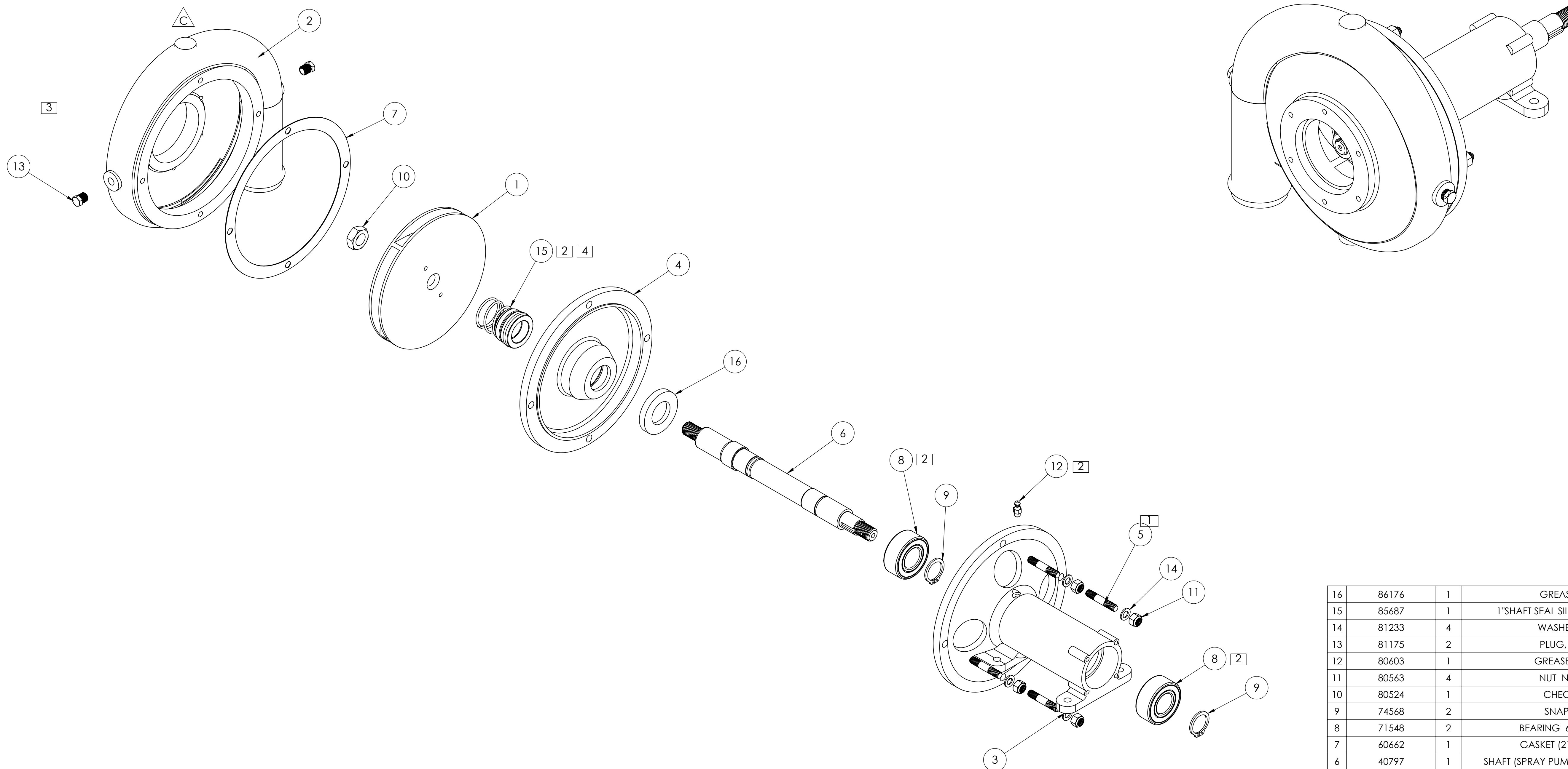


NOTES (UNLESS OTHERWISE SPECIFIED)

1. THREADLOCKER, RED: APPLY PERMATEX 26250 OR LOCTITE 262 (PERMANENT STRENGTH); APPLY PER MANUFACTURER'S INSTRUCTIONS.
2. BEARING GREASE: APPLY MOBILE MOBILITH SCH SYNTHETIC BEARING GREASE.
3. NPT FITTINGS: APPLY SWAGELOCK PTFE FREE THREAD SEALANT, OR ARGCO SUPERDOPE ANEROBIC THREAD SEALANT; APPLY PER MANUFACTURER'S INSTRUCTIONS.
4. DO NOT USE SPRING HOLDER.



DWG NO: **21992** REV: **C**

ENGINEERING APPROVED COPY FOR MANUFACTURE

ITEM NO.	PART NO.	NO. REQD	DESCRIPTION	SIZE	SPEC.	NO. REQD	NEXT ASSEMBLY	FINAL ASSEMBLY
16	86176	1	GREASE SEAL					
15	85687	1	1"SHAFT SEAL SILICON - CARBIDE					
14	81233	4	WASHER (SST)					
13	81175	2	PLUG, BRASS					
12	80603	1	GREASE FITTING					
11	80563	4	NUT NYLOCK					
10	80524	1	CHECK NUT					
9	74568	2	SNAP RING					
8	71548	2	BEARING 6-1/2" PUMP					
7	60662	1	GASKET (21363 PUMP)					
6	40797	1	SHAFT (SPRAY PUMPS) 6.5" GRUMMAN					
5	40804	4	STUD (SPRAY PUMPS)					
4	40786	1	IMPELLER SPACER (SPRAY PUMPS)					
3	40785	1	BEARING HOUSING (SPRAY PUMPS)					
2	40783	1	VOLUTE 6 1/2" SPRAY PUMP					
1	45500	1	6-1/2" IMPELLER - MACH'D					

REV.	E.O.	DESCRIPTION	BY	DATE	APPR'D	DATE
C	11187	ROTATED VOLUTE 90 DEG	LA	11/21/2017	CLK	12/15/2017
B	10770	REDRAWN IN SOLIDWORKS	RC	7/6/2017	CLK	7/7/2017
A	9394	CHANGED ITEM 15 85689 TO 85687	RC	10/19/2016	CLK	10/19/2016
NC	0097	INITIAL RELEASED	JMV	5/13/2010	JMV	5/13/2010

REVISIONS

DRAWN: JMV 5/13/10 CHECKED: RR 4/6/17 ENG APPR: CLK 4/7/17	UNLESS OTHERWISE SPECIFIED: DIMENSIONS ARE IN INCHES TOLERANCES: FRACTIONS ±1/16 DECIMALS ±.03 ANGLES ±0.01 HOLE DIA: .2515 - .125 DIA. +.004 -.001 .1260 - .250 DIA. +.005 -.001 .2510 - .500 DIA. +.006 -.001 .5010 - .750 DIA. +.008 -.001 .7510 - 1.000 DIA. +.010 -.001	 1206 HATTON ROAD, WICHITA FALLS, TX 76302 TITLE: ASSEMBLY - 6 1/2" SPRAY PUMP
REMOVE ALL BURRS AND SHARP EDGES INTERPRET DRAWING PER ANSI Y14.5M-1982 SURFACE ROUGHNESS PER MIL-STD-10 ALL MACHINED SURFACES NOT TO EXCEED 63 MICRONS PER MIL-STD-10 UNLESS NOTED	SCALE: NTS MODEL:	SIZE: D DWG. NO. 21992 REV: C SHEET 1 OF 1