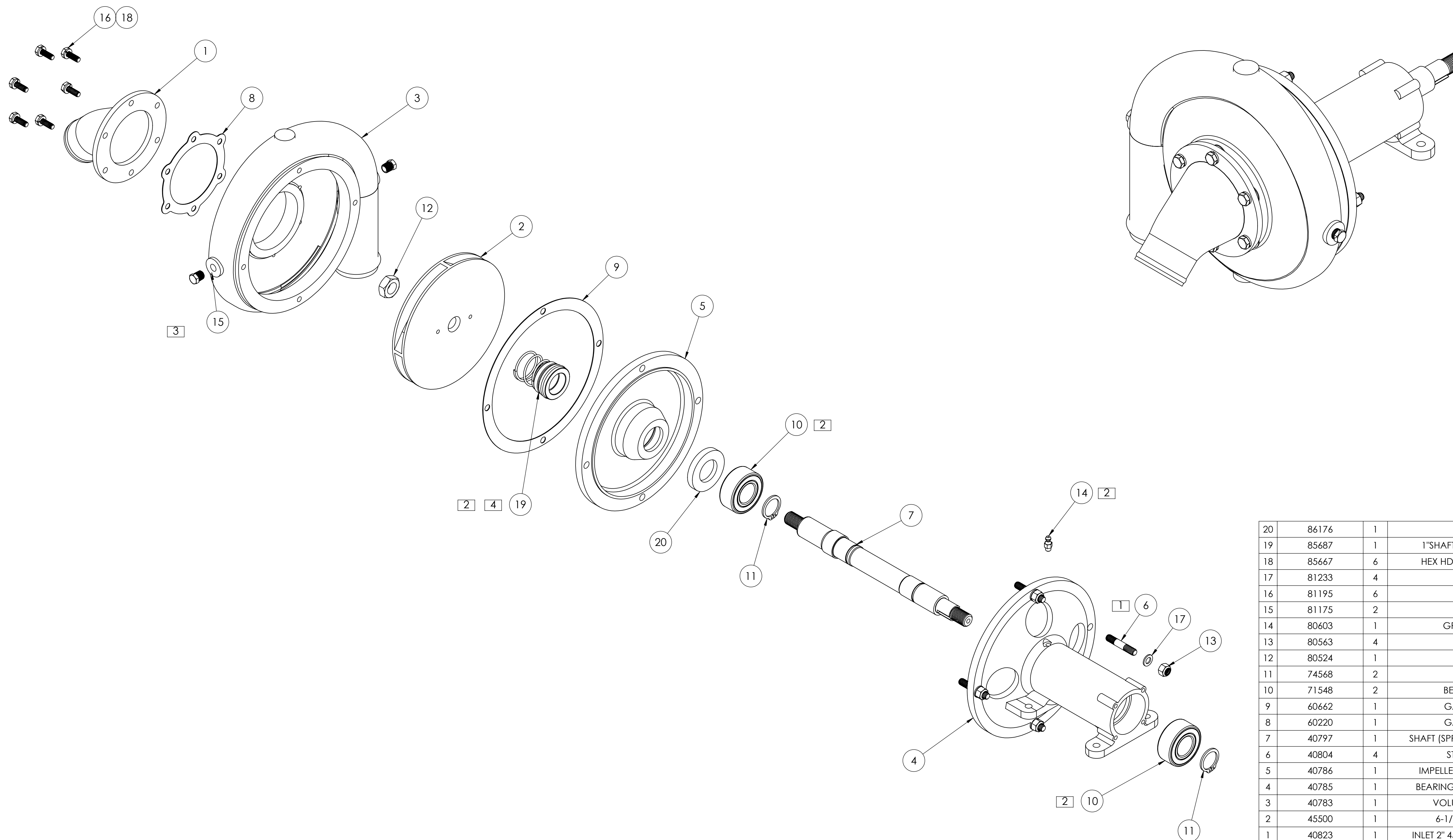


NOTES (UNLESS OTHERWISE SPECIFIED)

1. THREADLOCKER, BLUE: APPLY PERMATEX 24250 OR LOCTITE 242 (MEDIUM STRENGTH); APPLY PER MANUFACTURER'S INSTRUCTIONS.
2. BEARING GREASE: APPLY MOBILE MOBILITH SCH SYNTHETIC BEARING GREASE.
3. NPT FITTINGS: APPLY SWAGELOCK PTFE FREE THREAD SEALANT, OR ARGCO SUPERDOPE ANEROBIC THREAD SELANT; APPLY PER MANUFACTURER'S INSTRUCTIONS.
4. DO NOT USE SPRING HOLDER.



DWG NO: **21985** REV: **E**

ENGINEERING APPROVED COPY FOR MANUFACTURE

ITEM NO.	PART NO.	NO. REQD	DESCRIPTION	SIZE	SPEC.	NO. REQD	NEXT ASSEMBLY	FINAL ASSEMBLY
20	86176	1	GREASE SEAL					
19	85687	1	1"SHAFT SEAL SILICON - CARBIDE					
18	85667	6	HEX HD 1/4-20 UNC-3A X 3/4" LG					
17	81233	4	WASHER (SST)					
16	81195	6	WASHER, LOCK					
15	81175	2	PLUG, BRASS					
14	80603	1	GREASE FITTING 1/4-28					
13	80563	4	NUT NYLOCK					
12	80524	1	CHECK NUT					
11	74568	2	SNAP RING					
10	71548	2	BEARING 6-1/2" PUMP					
9	60662	1	GASKET (21363 PUMP)					
8	60220	1	GASKET (21363 PUMP)					
7	40797	1	SHAFT (SPRAY PUMPS) 6.5" GRUMMAN					
6	40804	4	STUD (SPRAY PUMPS)					
5	40786	1	IMPELLER SPACER (SPRAY PUMPS)					
4	40785	1	BEARING HOUSING (SPRAY PUMPS)					
3	40783	1	VOLUTE 6 1/2" SPRAY PUMP					
2	45500	1	6-1/2" IMPELLER - MACH'D					
1	40823	1	INLET 2" 45 DEG (21859 SPRAY PUMP)					

REV.	E.O.	DESCRIPTION	BY	DATE	APPR'D	DATE
E	10853	REDRAWN IN SOLIDWORKS : CHANGED ITEM NO. 1 TO 40823	RC	7/26/2017	CLK	7/26/2017
D	9392	CHANGED ITEM 19 85689 TO 85687	RC	10/19/2016	CLK	10/24/2016
C	2984	REVISED NOTE #2	PK	6/25/2012	-	-
B	-	50823 WAS 40823	CAS	8/17/2011	-	-
A	-	UPDATED, REVISED & REDRAWN	MDG	3/23/2007	-	-
NC	-	INITIAL RELEASE	SCM	6/20/1991	-	-

UNLESS OTHERWISE SPECIFIED:
DIMENSIONS ARE IN INCHES
TOLERANCES:
FRACTIONS ±1/16
XX ±.03
XXX ±.010
ANGLE ±1/2°
HOLE DIA:
.2515 - .125 DIA. +.004 -.001
.1260 - .250 DIA. +.005 -.001
.2510 - .500 DIA. +.006 -.001
.5010 - .750 DIA. +.008 -.001
.7510 - 1.000 DIA. +.010 -.001
REMOVE ALL BURRS AND SHARP EDGES
INTERPRET DRAWING PER ANSI Y14.5M-1982
SURFACE ROUGHNESS PER MIL-STD-10
ALL MACHINED SURFACES NOT TO EXCEED 63 MICROMETERS PER MIL-STD-10 UNLESS NOTED

TRANS LAND
1206 HATTON ROAD, WICHITA FALLS, TX 76302

TITLE: **ASSEMBLY - 6 1/2" SPRAY PUMP**

SIZE: **D** DWG. NO. **21985** REV **E**

SCALE: NTS MODEL: SHEET 1 OF 1