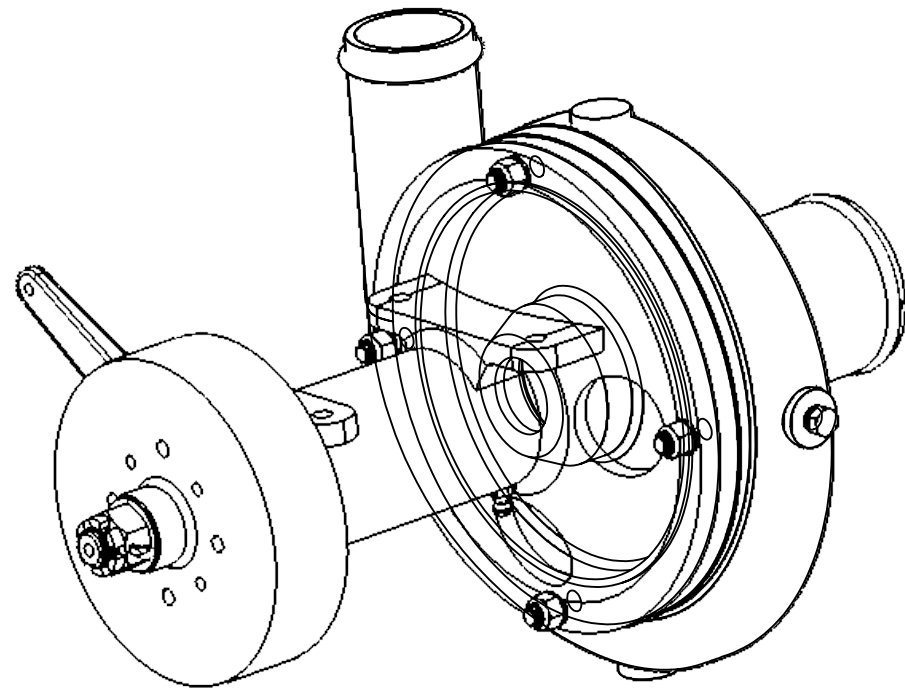


NOTES (UNLESS OTHERWISE SPECIFIED)

1.



21	81195	6	WASHER, LOCK						
20	81231	4	WASHER						
19	85667	6	HEX HD 1/4-20 UNC-3A X 3/4" LG						
18	40419	1	2 1/2" STRAIGHT INLET						
17	60220	1	GASKET (21363 PUMP)						
16	10633	1	KEY (SPRAY PUMPS) 3/4" LONG						
15	40994	1	BRAKE ARM (SPRAY PUMPS)						
14	85726	1	SPRING PIN						
13	81236	1	WASHER						
12	71590	1	BUSHING (SPRAY PUMPS)						
11	40787	1	END PLATE (SPRAY PUMPS)						
10	85653	4	SCREW HEX HEAD CAP 1/4 -20X5/8						
9	40416	1	CAM (SPRAY PUMP) RH						
8	40368	1	POST (SPRAY PUMPS)						
7	20503	2	BRAKE SHOE (1 SHOE)(1" WIDE)						
6	10596	2	SPRING (SPRAY PUMPS)						
5	40641	1	BRAKE DRUM (SPRAY PUMPS)						
4	80593	1	COTTER PIN 1/8 X 1"						
3	81252	1	WASHER						
2	80507	1	NUT						
1	21992	1	SPRAY PUMP (21363 W/O BRAKE ASSY)						
ITEM NO.	PART NO.	NO. REQD	DESCRIPTION	SIZE	SPEC.	NO. REQD	NEXT ASSEMBLY	FINAL ASSEMBLY	
			MATERIAL						

D	11188	REMOVED 21363, REPLACE WITH 21992; ADD PARTS FROM MASTER	LA	11/21/20 17	CK	12/20/17
NC		INITIAL RELEASE	VS	3/25/75		
REV.	EO#	DESCRIPTION	BY	DATE	APPR'D	DATE

NAME	DATE	UNLESS OTHERWISE SPECIFIED: DIMENSIONS ARE IN INCHES TOLERANCES: FRACTIONS ±1/16 .XX ±.03 .XXX ±.010 ANGLE ± 1/2° HOLE DIA: .0135 - .125 DIA. +.004 -.001 .1260 - .250 DIA. +.005 -.001 .2510 - .500 DIA. +.006 -.001 .5010 - .750 DIA. +.008 -.001 .7510 - 1.000 DIA. +.010 -.001	
DRAWN	VS		1/1/75
CHECKED			
ENG APPR.			
REMOVE ALL BURRS AND SHARP EDGES			
INTERPRET DRAWING PER ANSI Y14.5M-1982			
SURFACE ROUGHNESS PER MIL-STD-10			
ALL MACHINED SURFACES NOT TO EXCEED 63 MICROINCHES PER MIL-STD-10 UNLESS NOTED			
 THIRD ANGLE PROJECTION			

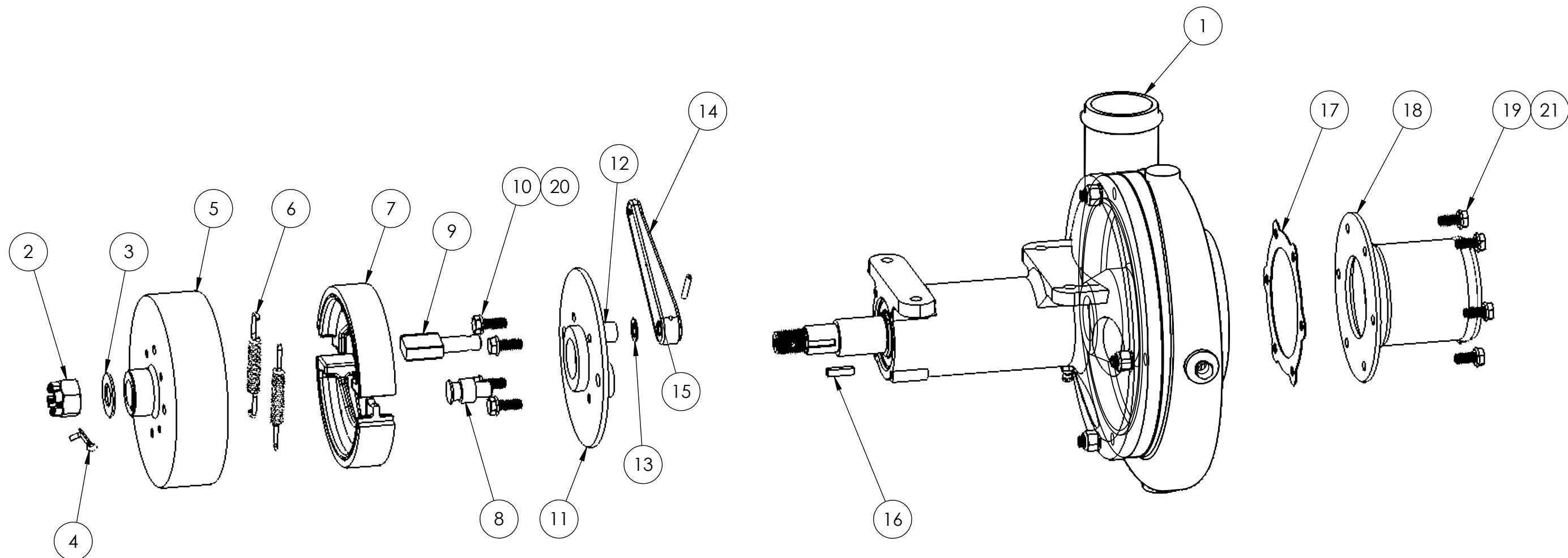
1206 HATTON ROAD, WICHITA FALLS, TX 76302


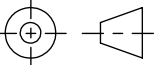
TITLE:		PUMP 6 1/2 GRUMMAN	
SIZE	DWG. NO.	21860	REV
B			D
SCALE: NTS		MODEL:	SHEET 1 OF 2

SolidWorks

NOTES (UNLESS OTHERWISE SPECIFIED)

1.



NAME		DATE		UNLESS OTHERWISE SPECIFIED: DIMENSIONS ARE IN INCHES		 1206 HATTON ROAD, WICHITA FALLS, TX 76302	
DRAWN				TOLERANCES:			
CHECKED				FRACTIONS ±1/16		TITLE: PUMP 6 1/2 GRUMMAN	
ENG APPR.				.XX ±.03			
REMOVE ALL BURRS AND SHARP EDGES				.XXX ±.010		SIZE B DWG. NO. 21860 REV D	
INTERPRET DRAWING PER ANSI Y14.5M-1982				ANGLE ± 1/2°			
SURFACE ROUGHNESS PER MIL-STD-10				HOLE DIA:		SCALE: NTS	
ALL MACHINED SURFACES NOT TO EXCEED 63 MICROINCHES PER MIL-STD-10 UNLESS NOTED				.0135 - .125 DIA. +.004 -.001		MODEL:	
SolidWorks				.1260 - .250 DIA. +.005 -.001		SHEET 2 OF 2	
				.2510 - .500 DIA. +.006 -.001			
				.5010 - .750 DIA. +.008 -.001			
				.7510 - 1.000 DIA. +.010 -.001			
				 THIRD ANGLE PROJECTION			