



BOOMS

Transland booms, streamline and airfoil, are made of 316 stainless steel tubing (.065 wall thickness), eliminating any possibility of corrosion. The weight in using stainless steel is not a major factor since the strength of it allows the use of a thinner gauge.

Transland graduated booms are becoming the preferred product, having less weight, less drag and they retain less unuseable liquid. A more constant pressure throughout the boom is also realized. End fittings are available, and plugs can be placed on the bottom of smaller sections. All booms can be made to customer specifications.

Streamline Booms

2" Air Tractor Booms

56521 Streamline Boom

209" long, (38) 1/8" female fittings, factory spacing, 1-1/2" female Q.D. inboard, 1" female with plug outboard.

58521 Streamline Graduated Boom

2" begining with four graduations. 209" long, (38) 1/8" female fittings, factory spacing, 1-1/2" female Q.D. inboard, 1" female with plug outboard.

2" Air Tractor Center Booms

56523 Streamline Center Boom

For Air Tractor 301 without strainer, 46" wide, (6)1/8" female fittings, factory spacing, 2" hose inlet, 1-1/2" male outlets, 3-1/2° dihedral.

59030 Streamline Center Boom

For Air Tractor 502 with strainer, 54" wide, (8) 1/8" female fittings, factory spacing, 2" hose inlet, 1-1/2" male outlets (for use with Crop Hawk), 3-1/2° dihedral.

59059 Streamline Center Boom

For Air Tractor 501/502 with strainer, 54" wide, (8) 1/8" female fittings, factory spacing, 2" hose inlet, 1-1/2" male outlets, 3-1/2° dihedral.

59068 Streamline Center Boom

For Air Tractor 301 with strainer, 46" wide, (6) 1/8" female fittings, factory spacing, 2" hose inlet, 1-1/2" male outlets, 3-1/2° dihedral.

59090 Streamline Center Boom

For Air Tractor 802 4" drop system with strainer, 57" wide, 3" hose inlet, 2" male outlets, 3-1/2° dihedral.



59191 Streamline Center Boom

For Air Tractor 802 with strainer, 3" Inlet.

2" Ayres/Thrush Booms

56520 Streamline Boom

223" long, (32) 1/8" female fittings, 1-1/2" female Q.D. inboard, 1" female washout with hex plug.

58519 Streamline Graduated Boom

2" begining with five graduations. 223" long, (32) 1/8" female fittings, 1-1/2" female Q.D. inboard, 1" female washout with hex plug.

58520 Streamline Graduated Boom

2" begining with four graduations. 223" long, (32) 1/8" female fittings, 1-1/2" female Q.D. inboard, 1" female washout with hex plug.

2" Ayres/Thrush Center Booms

59058 Streamline Center Boom

With strainer. 45" wide, (7) 1/8" female fittings, factory spacing, 2" hose inlet, 1-1/2" male Q.D. outlets. 3-1/2° dihedral.

56522 Streamline Center Boom

Without strainer, 46" wide, (7)1/8" female fittings, factory spacing, 2" hose inlet, 1-1/2" male Q.D. outlets, 3-1/2° dihedral.



2" Ag-Cat Booms

56524 Streamline Boom

210" long, (35) 1/8" female fittings, 1-1/2" hose barb inboard, 1" male pipe thread outboard.

58524 Streamline Graduated Boom

2" beginning with four graduations.
210" long, (35) 1/8" female fittings, 1-1/2" hose barb inboard, 1" male pipe thread outboard.

2" Dromader Booms

53641 Streamline Boom

232" long, (38) 1/8" female fittings, 6" spacing.

2" Dromader Center Booms

59042 Streamline Center Boom

With strainer, 54-1/2" wide, (9)1/8" female fittings, 2" hose inlet, 1-1/2" male Q.D. outlets, 4-1/2" dihedral.

53643 Streamline Center Boom

Without strainer, 54-1/2" wide, (9)1/8" female fittings, 2" hose inlet, 1-1/2" male Q.D. outlets, 4-1/2" dihedral.



2" Weatherly Booms

56571 Streamline Boom

216" long, (37) 1/8" female fittings, 6" spacing. 1-1/2" hose barb inboard, 1/2" female outboard.

56579 Streamline Boom

184" long, end to end.

58571 Streamline Graduated Boom

2" beginning with four graduations.
216" long, (37) 1/8" female fittings, 6" spacing, 1-1/2" hose barb inboard, 1/2" female outboard.

58572 Streamline Graduated Boom

2-1/2" beginning with six graduations.
213" long, 6" spacing.

58579 Streamline Graduated Boom

2" beginning with four graduations.
216" long, (37) 1/8" female fittings, 6" spacing, 1-1/2" hose barb inboard, 1/2" female outboard.

2" Cessna Booms

56543 Streamline Boom

192" long, (34) 1/8" female fittings, 5-1/2" spacing, 1-1/2" female Q.D. inboard, 1" male Q.D. outboard with dust cap.

58543 Streamline Graduated Boom

2" beginning with four graduations.
192" long, (34) 1/8" female fittings, 5-1/2" spacing, 1-1/2" female Q.D. inboard, 1" male Q.D. outboard with dust cap.

2" Piper Brave PA-36 Booms

56525 Streamline Boom

202 1/2" long, (32) 1/8" female fittings, 6" spacing, 1-1/2" hose inboard, 1" female NPT outboard.

2" Piper Brave Center Booms

59012 Streamline Center Boom

With strainer, 13" wide, (2)1/4" female fittings, 2" hose inlet, 1-1/2" male Q.D. outlets.

59026 Streamline Center Boom

With strainer, 46-1/2" wide, (7)1/8" female fittings, 2" hose inlet, 1-1/2" male Q.D. outlets, 5° dihedral.

2 1/2" Air Tractor Booms

58523 Streamline Graduated Boom

2-1/2" beginning with six graduations.
209" long, (38) 1/8" female fittings, factory spacing, 1-1/2" female Q.D. inboard, 1" female with plug outboard.

58533 Streamline Graduated Boom

2-1/2" beginning with five graduations.
209" long, (38) 1/8" female fittings, factory spacing, 1-1/2" female Q.D. inboard, 1" female with plug outboard.

58522 Streamline Graduated Boom

2-1/2" beginning with six graduations.
209" long, (38) 1/8" female fittings, factory spacing, 1-1/2" female Q.D. inboard, 1" female with plug outboard.

56595 Streamline Boom

For Air Tractor 602.
202" long, (39)1/4" female fittings, 5-3/8" spacing, 2" female Q.D. inboard, 1" female with plug outboard.

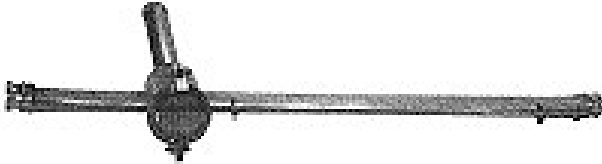
56460 Streamline Boom

For Air Tractor 802.

2 1/2" Air Tractor Center Booms

59029 Streamline Center Boom

With strainer (for use with Crop Hawk), 46" wide, (9)1/8" female fittings, factory spacing, 2" hose inlet, 1-1/2" male Q.D. outlets.



56556 Streamline Center Boom

Without strainer, 54" wide, (9)1/8" female fittings, factory spacing, 2-1/2" hose inlet, 2" male Q.D. outlets, 3-1/2° dihedral.

56560 Streamline Center Boom

With strainer, 54" wide, (9)1/8" female fittings, factory spacing, 2-1/2" hose inlet, 2" male Q.D. outlets, 3-1/2° dihedral.

59096 Streamline Center Boom

For Air Tractor 602 standard system.

56595 Streamline Center Boom

For Air Tractor 602 drop system.

59002 Streamline Center Boom

For Air Tractor 802 drop system.

56596 Streamline Center Boom

For Air Tractor standard system.

2 1/2" Ayres/Thrush Booms

56595 Streamline Boom

For Ayres 660.
202" long, (39)1/4" female fittings, 5-3/8" spacing, 2" female Q.D. inboard, 1" female with plug outboard.

59083 Streamline Center Boom

For Ayres 660 with strainer.
45" wide, (7)1/4" female fittings, standard spacing, 3" hose inlet, 2" male Q.D. outlets, 2° dihedral.

56532 Streamline Center Boom

45" wide, (7)1/8" female fittings, factory spacing, 2-1/2" hose inlet, 2" male Q.D. outlets, 3-1/2° dihedral.

56557 Streamline Center Boom

Without strainer, 46" wide, (7)1/8" female fittings, factory spacing, 2-1/2" hose inlet, 2" male Q.D. outlets, 3-1/2° dihedral.

2 1/2" Dromader Booms

53644 Streamline Boom

Right Hand for Dromader M18/A
232" long, (38) 1/8" female fittings, 6" spacing.

53645 Streamline Boom

Left Hand for Dromader M18/A
232" long, (38) 1/8" female fittings, 6" spacing.

53646 Center Boom

Without strainer, 54-1/2" wide, high volume, (9)1/8" female fittings, standard spacing, 3" inlet, 2" male outlets, 4-1/2° dihedral.

59046 Center Boom

With strainer, 54-1/2" wide, high volume, (9)1/8" female fittings, standard spacing, 3" inlet, 2" male outlets, 4-1/2° dihedral.

2 1/2" OV10 Booms

58517 Streamline Graduated Boom

2-1/2" beginning with four graduations.
185" long, (43) 1/4" female fittings, factory spacing, 2-1/2" female Q.D. inboard, 1" female with plug outboard.

59112 Streamline Center Boom

With strainer, 48" wide, (8)1/4" female fittings, 4" spacing, 3" hose inlet, 2-1/2" male Q.D. outlets, 11° dihedral.

■ Airfoil Booms



2" Air Tractor Booms

56537 Airfoil Boom

Left Hand.
209" long, (38) 1/8" female fittings, factory spacing,
1-1/2" female Q.D. inboard, 1" female with plug
outboard.

56538 Airfoil Boom

Right Hand.
209" long, (38) 1/8" female fittings, factory spacing,
1-1/2" female Q.D. inboard, 1" female with plug
outboard.

2" Ayres/Thrush Booms

56549 Airfoil Boom

Left Hand.
223" long, (32) 1/8" female fittings, 1-1/2" female Q.D.
inboard, 1" female washout with hex plug.

56534 Airfoil Boom

Right Hand.
223" long, (32) 1/8" female fittings, 1-1/2" female Q.D.
inboard, 1" female washout with hex plug.

2" Ag-Cat Booms

56539 Airfoil Boom

Left Hand.
210" long, (35) 1/8" female fittings, 1-1/2" hose
barb inboard, 1" male pipe thread outboard.

56540 Airfoil Boom

Right Hand.
210" long, (35) 1/8" female fittings, 1-1/2" hose
barb inboard, 1" male pipe thread outboard.

2" Cessna Booms

56551 Airfoil Boom

Left Hand.
192" long, (34) 1/8" female fittings, 1-1/2" female Q.D.
inboard, 1" male Q.D. with dust cap outboard.

56550 Airfoil Boom

Right Hand.
192" long, (34) 1/8" female fittings, 1-1/2" female Q.D.
inboard, 1" male Q.D. with dust cap outboard.

2" Piper Brave Booms

56553 Airfoil Boom

Left Hand.
202-1/2" long, (32) 1/8" female fittings, 6" spacing,
1-1/2" female Q.D. inboard, 1" female NPT outboard.

56550 Airfoil Boom




Right Hand.
202-1/2" long, (32) 1/8" female fittings, 6" spacing,
1-1/2" female Q.D. inboard, 1" female NPT outboard.

■ Graduated Boom Stock

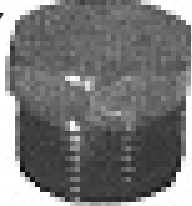
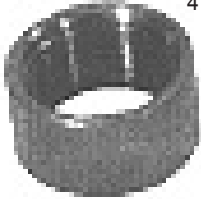
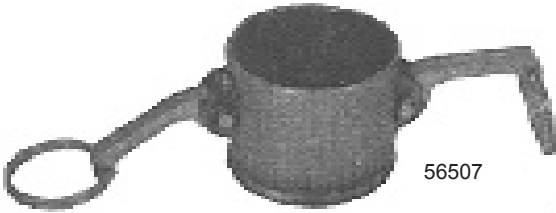
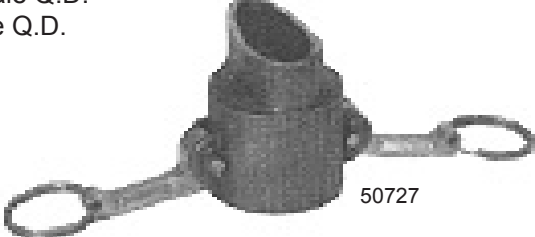



Sample Graduated Boom Stock

■ Boom Hangers

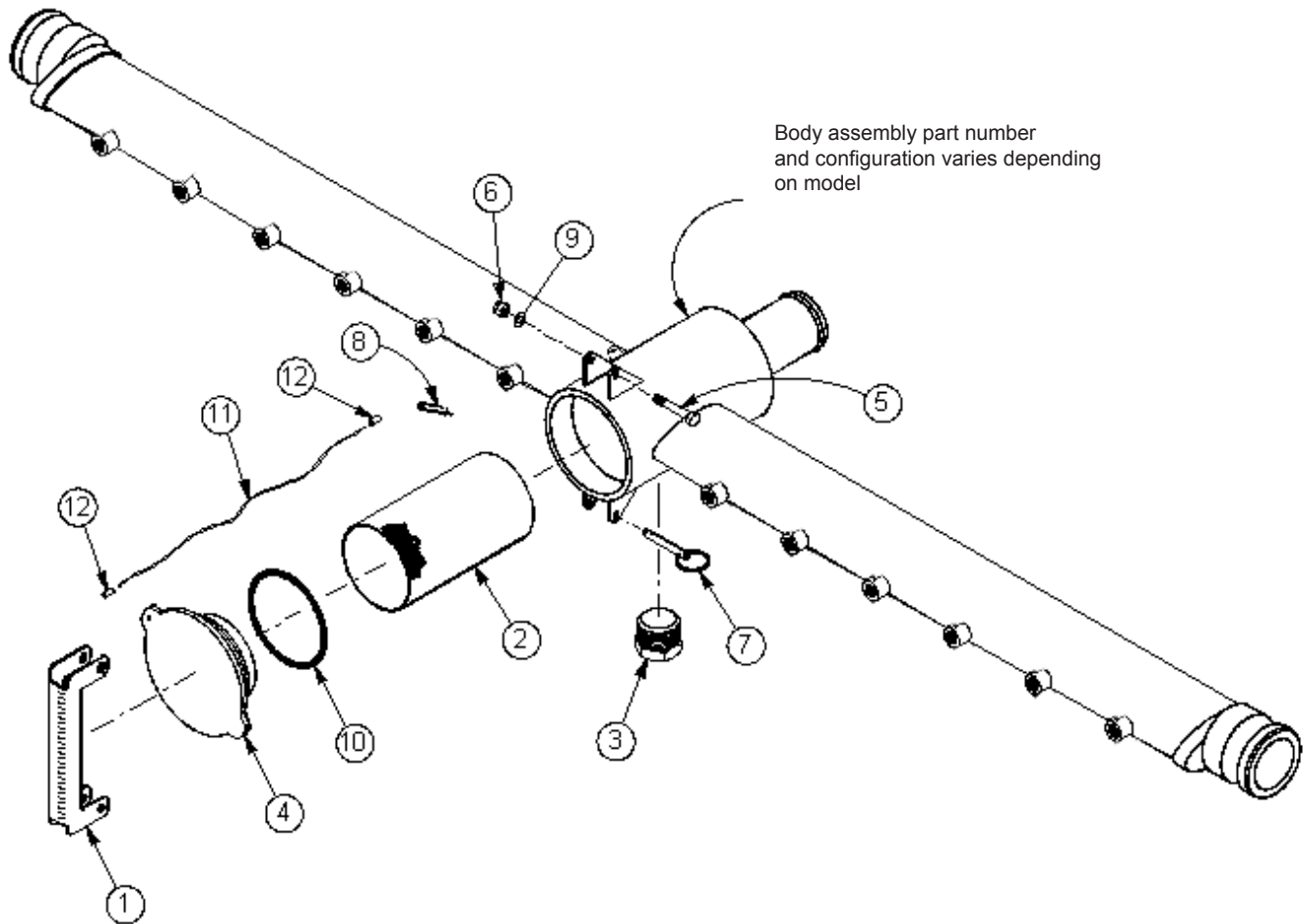
<i>Ag-Cat</i>	<i>Cessna</i>
<p>22922 Aluminum Boom Hangers For Ag-Cat overw wing.</p>	<p>23097 Boom Hangers For Cessna, long assembly.</p> 
<p>56675 Drop Hanger</p>	<p>23098 Boom Hangers For Cessna, medium assembly.</p> 
<p>56676 Drop Hanger and Fittings Drop hanger with stainless steel Q.D. fittings and swivel boom hanger mount.</p>	<p>23099 Boom Hangers For Cessna, short assembly.</p> 
	<p>57543 Boom & Hanger Kit For Cessna, includes two each of the following: 23097, 23098, 23099 %6543 booms.</p>

■ End Fittings

<i>Stainless Steel</i>	
41057 1" NPT Male Plug	
41058 1" NPT Female Half Coupling	
50727 Coupling Assembly	
50913 1½" Male Q.D./Streamline Coupling	
56505 1½" Female Q.D. Coupling	
56507 2" Female Q.D. Coupling	
56506 2½" Female Q.D. Coupling	
56502 3" Female Q.D. Coupling	
<i>Aluminum</i>	
20727 Coupling Assembly 1½" female Q.D. fits streamline boom	
40913 Male Streamlin Coupling 1½" male Q.D. fits 30285 Y-Boom	
41017 Outboard End Cap 1" female Q.D.	
41018 Outboard End Cap 1" male Q.D.	
	
	



Parts Breakdown for A Typical Stainless Steel Center Boom With Strainer



Body assembly part number
and configuration varies depending
on model

* Safety Cable is crimped onto the Cowling Pin, passes thru rings of Quick Disconnect Pin and crimped into hole of Cap.

ITEM	PART NO.	DESCRIPTION	QTY	ITEM	PART NO.	DESCRIPTION	QTY
1	15970	Arm	1	7	80656	Pin, Quick Disconnect	1
2	21523	Screen Assy	1	8	80696	Cowling Pin	1
3	41057	Plug	1	9	81227	Washer, Flat	1
4	55401	Cap	1	10	81624	O-Ring	1
5	80123	Bolt	1	11	85100	Safety Cable	12"
6	80560	Nut	1	12	85710	Sleeve	2